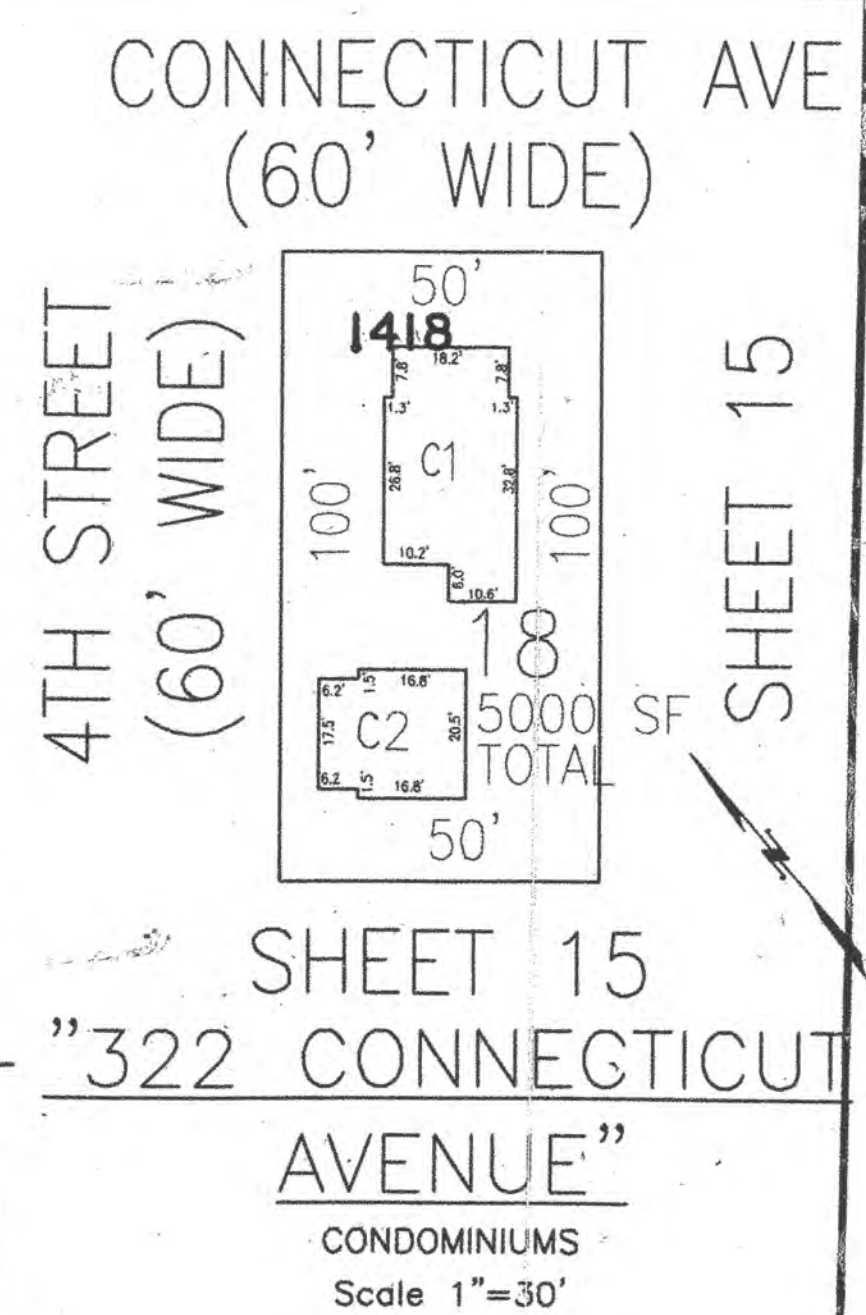


- REVISIONS
- WPHA 2-14-89
 - WPHA 2-21-90
 - WPHA 6-19-91
 - WPHA 6-4-93
 - WPHA 11-6-95
 - WPHA 3-14-96
 - WPHA 3-19-97
 - WPHA 12-7-99
 - WPHA 1-7-02
 - WPHA 3-14-05
 - WPHA 1-18-07
 - JAM 4-6-09
 - JAM 4-28-09
 - JAM 1-18-10
 - JAM 11-3-14
 - JAM 12-15-15



SHEET 15
"322 CONNECTICUT AVENUE"
CONDOMINIUMS
Scale 1"=30'

NEW JERSEY DEPARTMENT OF THE TREASURY
DIVISION OF TAXATION
APPROVED AS A TAX MAP PURSUANT TO THE AUTHORITY OF
N.J.S.A. 54:1-18 AND N.J.S.A. 54:2-1
FOR THE DIRECTOR, DIVISION OF TAXATION
John R. Walker
John R. Walker, Principal Field Representative
DATE: JAN 13 2015 SERIAL NO. 106

NEW JERSEY DEPARTMENT OF THE TREASURY
DIVISION OF TAXATION
PROPERTY ADMINISTRATION
APPROVED AS A TAX MAP PURSUANT TO THE AUTHORITY OF
N.J.S.A. 54:1-18 AND N.J.S.A. 54:2-1
FOR THE DIRECTOR, DIVISION OF TAXATION
John R. Walker
John R. Walker, Principal Field Representative
DATE: SEP 17 2015 SERIAL NO. 961

APPROVAL - THE PUBLIC UTILITY TAX BUREAU
NEW JERSEY DEPARTMENT OF THE TREASURY
DIVISION OF TAXATION
PUBLIC UTILITY TAX BUREAU
APPROVED AS A TAX MAP PURSUANT TO THE
PROVISIONS OF CHAPTER 175 LAWS OF 1913, ETC.
FOR THE DIRECTOR, DIVISION OF TAXATION
J. K. Orma
J. K. Orma, State Supervisor
DATE: JAN 28 1969 SERIAL NO. 466

Note: All qualifiers shown are listed as CXXXX.
Where XXX equals the qualifier shown on the map.
Example:
One digit qualifiers - C001
Two digit qualifiers - C011
Three digit qualifiers - C0111

TAX MAP
CITY OF SOMERS POINT
ATLANTIC COUNTY, NEW JERSEY
SCALE: 1" = 100'
NOVEMBER, 1968
TO SHOW CONDITIONS AS OF: 11-17-14
JOHN R. WALKER
738 SHORE ROAD
SOMERS POINT, N.J.

SHEET 15

SHEET 9

SHEET 22

SHEET 21

SHEET 14