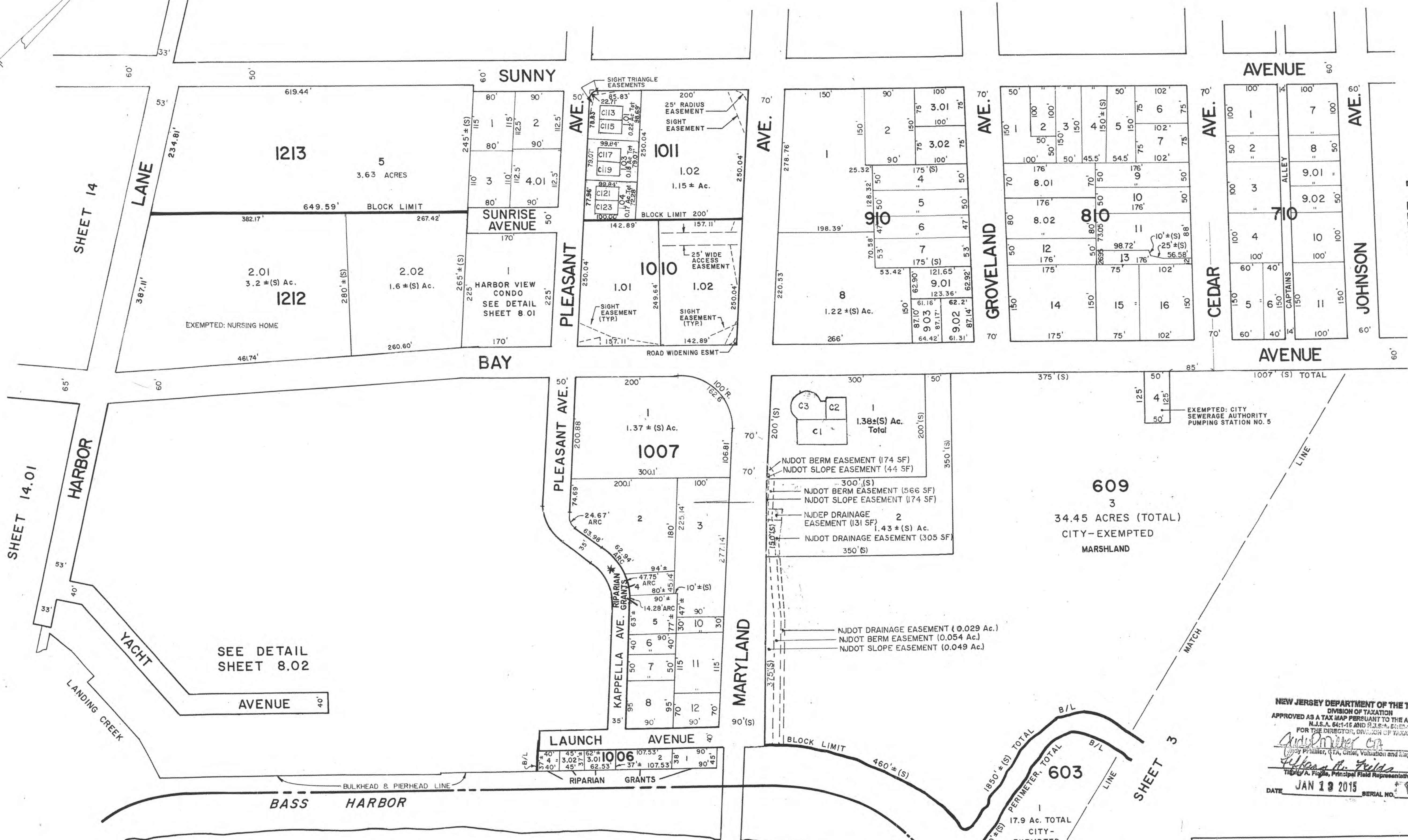


REVISIONS

- WPHA 2-23-88
- WPHA 1-30-89
- WPHA 8-13-90
- WPHA 12-3-93
- WPHA 11-6-95
- WPHA 3-15-96
- WPHA 4-4-97
- WPHA 12-31-98
- WPHA 12-7-99
- WPHA 11-12-01
- WPHA 1-18-07
- JAM 4-27-09
- JAM 1-18-10
- JAM 8-30-12
- JAM 11-3-14

SHEET 9



SHEET 14

SHEET 14.01

SHEET 3

SHEET 3

NEW JERSEY DEPARTMENT OF THE TREASURY
 DIVISION OF TAXATION
 PROPERTY ADMINISTRATION
 APPROVED AS A TAX MAP PURSUANT TO THE AUTHORITY OF
 N.J.S.A. 54:1-4 & 54:1-5
 FOR THE DIRECTOR, DIVISION OF TAXATION
 THOMAS J. FLYNN, Principal Field Representative
 DATE: SEP 17 2014

EGG HARBOR TOWNSHIP
 ATLANTIC COUNTY

* LAND (TOTALLY OR PARTIALLY)
 FORMERLY FLOWED BY THE MEAN
 HIGH TIDE AS SHOWN ON TIDELANDS
 MAP # 175 - 2010

Note: All qualifiers shown are listed as C0XXX.
 Where XXX equals the qualifier shown on the map.
 Example:
 One digit qualifiers - C0001
 Two digit qualifiers - C0011
 Three digit qualifiers - C0111

WPHA 9-22-87
 WPHA 7-11-88
 WPHA 12-18-84
 WPTH 5-10-83
 WPTH 9-7-82
 REVISIONS

APPROVAL - THE PUBLIC UTILITY TAX BUREAU
 NEW JERSEY DEPARTMENT OF THE TREASURY
 DIVISION OF TAXATION
 PUBLIC UTILITY TAX BUREAU
 APPROVED AS A TAX MAP PURSUANT TO THE
 PROVISIONS OF CHAPTER 125, LAWS OF 1913, ETC.
 FOR THE DIRECTOR, DIVISION OF TAXATION
 J. H. Dumas
 DATE: JAN 28 1969 SERIAL NO. 466

NEW JERSEY DEPARTMENT OF THE TREASURY
 DIVISION OF TAXATION
 APPROVED AS A TAX MAP PURSUANT TO THE AUTHORITY OF
 N.J.S.A. 54:1-4 AND 54:1-5, ETC.
 FOR THE DIRECTOR, DIVISION OF TAXATION
 Thomas J. Flynn
 DATE: JAN 19 2015 SERIAL NO. 1052

TAX MAP
 CITY OF SOMERS POINT
 ATLANTIC COUNTY, NEW JERSEY

SCALE: 1" = 100' NOVEMBER, 1968

TO SHOW CONDITIONS AS OF: 11-17-14
 JOHN R. WALKER
 738 SHORE ROAD
 SOMERS POINT, N.J.