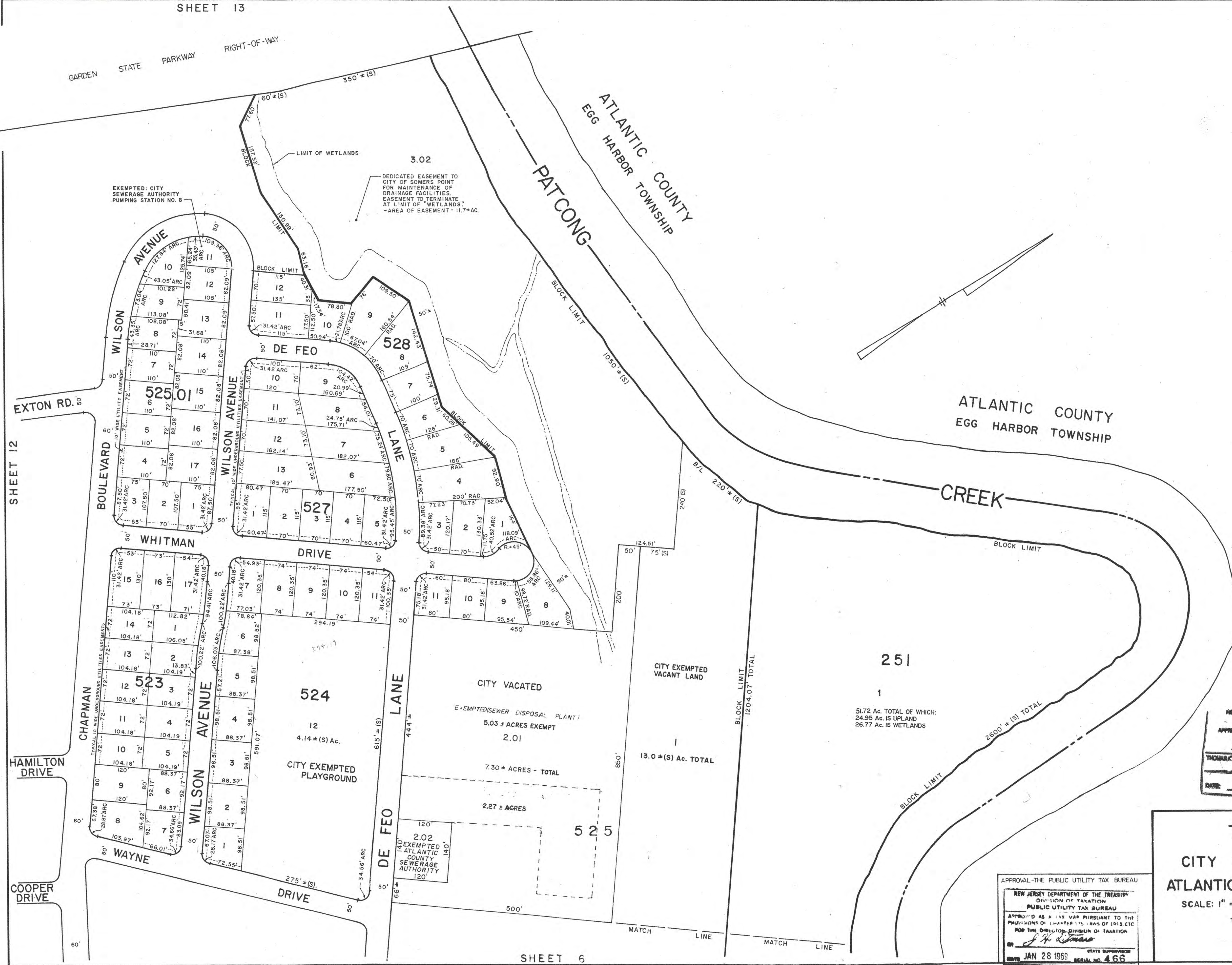


REVISIONS	
WPHA 2-5-86	
WPHA 3-10-89	
WPHA 3-4-93	
WPHA 3-14-05	
JAM 4-27-09	
JAM 1-18-10	
JAM 9-7-12	



NEW JERSEY DEPARTMENT OF THE TREASURY
 DIVISION OF TAXATION
 APPROVED AS A TAX MAP PURSUANT TO THE AUTHORITY OF
 N.J.S.A. 64:1-6 AND N.J.S.A. 64:1-1
 FOR THE DIRECTOR, DIVISION OF TAXATION
Thomas K. Kelly
 Thomas K. Kelly, Chief, Valuation and Mapping
 Title: A. Field, Principal Field Representative
 DATE: JAN 13 2015 SERIAL NO. 1052

NEW JERSEY DEPARTMENT OF THE TREASURY
 DIVISION OF TAXATION
 PROPERTY ADMINISTRATION
 APPROVED AS A TAX MAP PURSUANT TO THE AUTHORITY OF
 N.J.S.A. 64:1-6 AND 64:1-1
 FOR THE DIRECTOR, DIVISION OF TAXATION
Thomas K. Kelly
 Thomas K. Kelly, Chief, Valuation and Mapping
 Title: A. Field, Principal Field Representative
 DATE: SEP 17 2009 SERIAL NO. 961

APPROVAL - THE PUBLIC UTILITY TAX BUREAU
 NEW JERSEY DEPARTMENT OF THE TREASURY
 DIVISION OF TAXATION
 PUBLIC UTILITY TAX BUREAU
 APPROVED AS A TAX MAP PURSUANT TO THE
 PROVISIONS OF CHAPTER 175 LAWS OF 1913, ETC.
 FOR THE DIRECTOR, DIVISION OF TAXATION
J. H. O'Connell
 J. H. O'Connell, State Supervisor
 DATE: JAN 28 1969 SERIAL NO. 466

TAX MAP
 CITY OF SOMERS POINT
 ATLANTIC COUNTY, NEW JERSEY
 SCALE: 1" = 100'
 NOVEMBER, 1968
 TO SHOW CONDITIONS AS OF: 11-17-14
 JOHN R. WALKER
 738 SHORE ROAD
 SOMERS POINT, N.J.