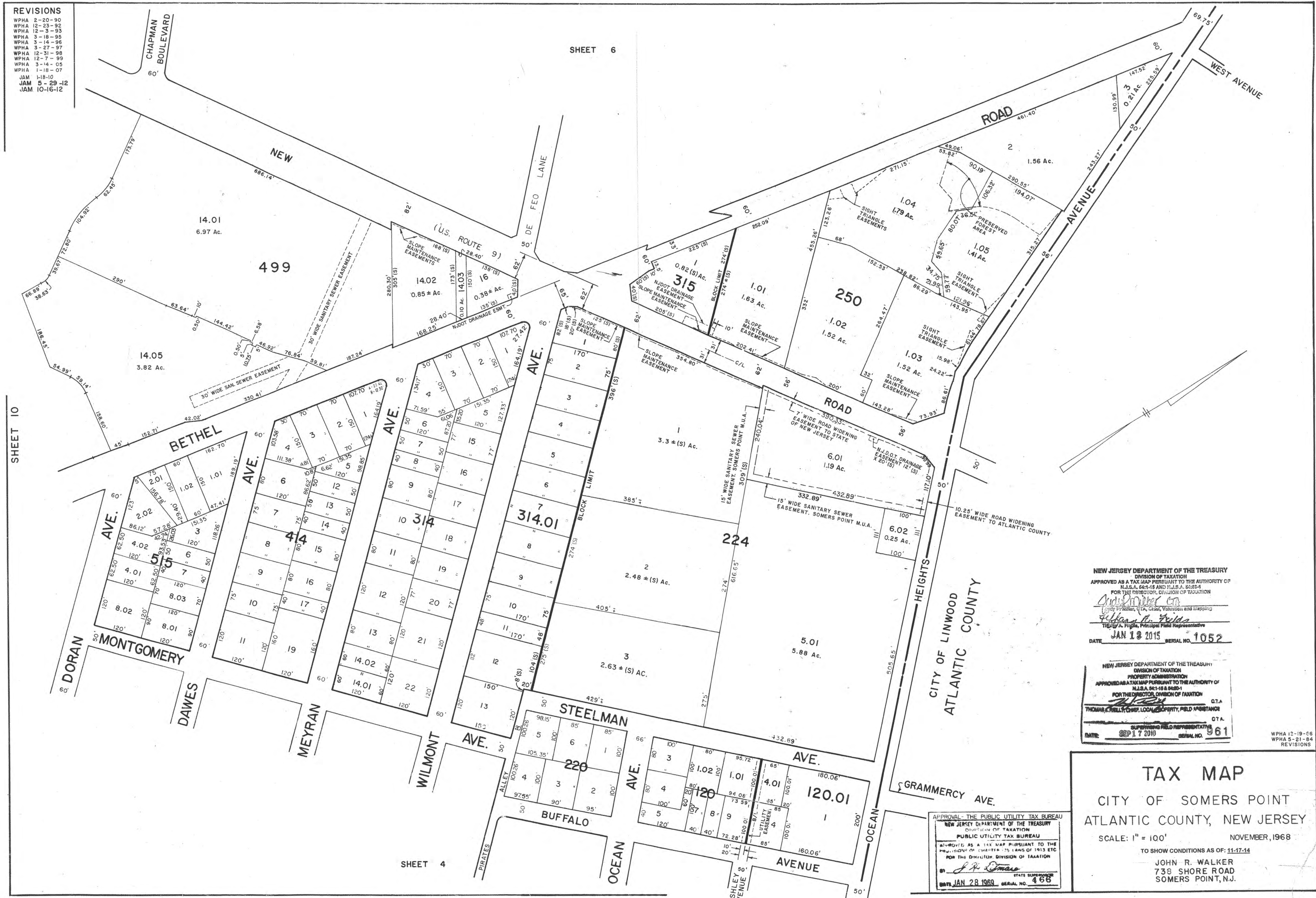


- REVISIONS**
- WPHA 2-20-90
 - WPHA 12-23-92
 - WPHA 12-3-93
 - WPHA 3-18-95
 - WPHA 3-14-96
 - WPHA 3-27-97
 - WPHA 12-31-98
 - WPHA 12-7-99
 - WPHA 3-14-05
 - WPHA 1-18-07
 - JAM 1-18-10
 - JAM 5-29-12
 - JAM 10-16-12

SHEET 6



SHEET 10

SHEET 4

NEW JERSEY DEPARTMENT OF THE TREASURY
 DIVISION OF TAXATION
 APPROVED AS A TAX MAP PURSUANT TO THE AUTHORITY OF
 N.J.S.A. 64:1-18 AND N.J.S.A. 62:25-4
 FOR THE DIRECTOR, DIVISION OF TAXATION
Alban A. Fields
 Alban A. Fields, Principal Field Representative
 DATE: JAN 13 2015 SERIAL NO. 1052

NEW JERSEY DEPARTMENT OF THE TREASURY
 DIVISION OF TAXATION
 PROPERTY ADMINISTRATION
 APPROVED AS A TAX MAP PURSUANT TO THE AUTHORITY OF
 N.J.S.A. 64:1-18 & 64:20-1
 FOR THE DIRECTOR, DIVISION OF TAXATION
 THOMAS A. HELLER, CHIEF, LOCAL PROPERTY, FIELD ASSISTANCE
 SUPERVISING FIELD REPRESENTATIVE
 DATE: SEP 17 2010 SERIAL NO. 961

WPHA 12-19-96
WPHA 5-21-84
REVISIONS

APPROVAL - THE PUBLIC UTILITY TAX BUREAU
 NEW JERSEY DEPARTMENT OF THE TREASURY
 DIVISION OF TAXATION
 PUBLIC UTILITY TAX BUREAU
 APPROVED AS A TAX MAP PURSUANT TO THE
 PROVISIONS OF CHAPTER 25 LAWS OF 1913 ETC
 FOR THE DIRECTOR, DIVISION OF TAXATION
 BY *J. R. Omas* STATE SUPERVISOR
 DATE: JAN 28 1969 SERIAL NO. 466

TAX MAP
 CITY OF SOMERS POINT
 ATLANTIC COUNTY, NEW JERSEY
 SCALE: 1" = 100'
 NOVEMBER, 1968
 TO SHOW CONDITIONS AS OF: 11-17-14
 JOHN R. WALKER
 738 SHORE ROAD
 SOMERS POINT, N.J.