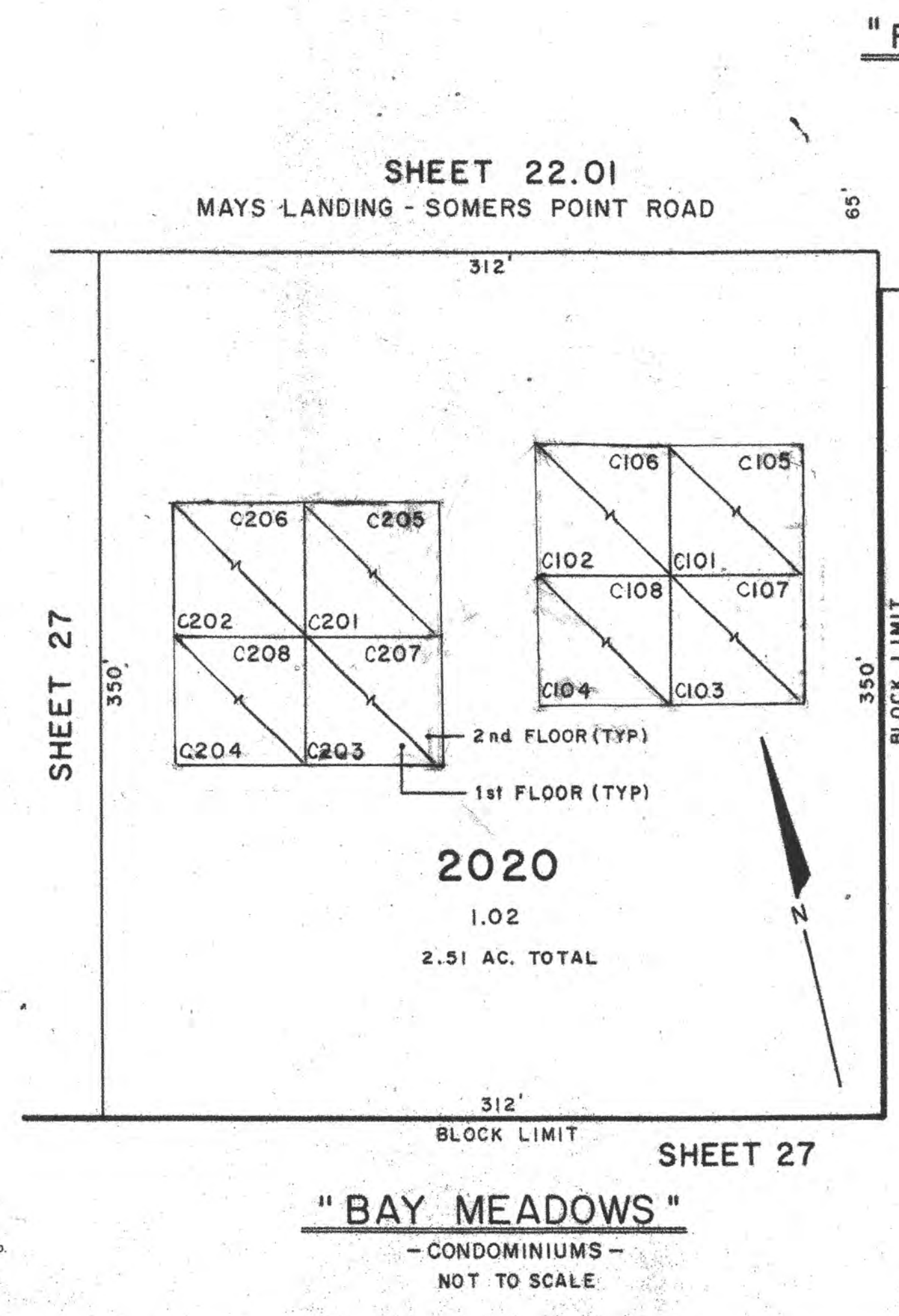
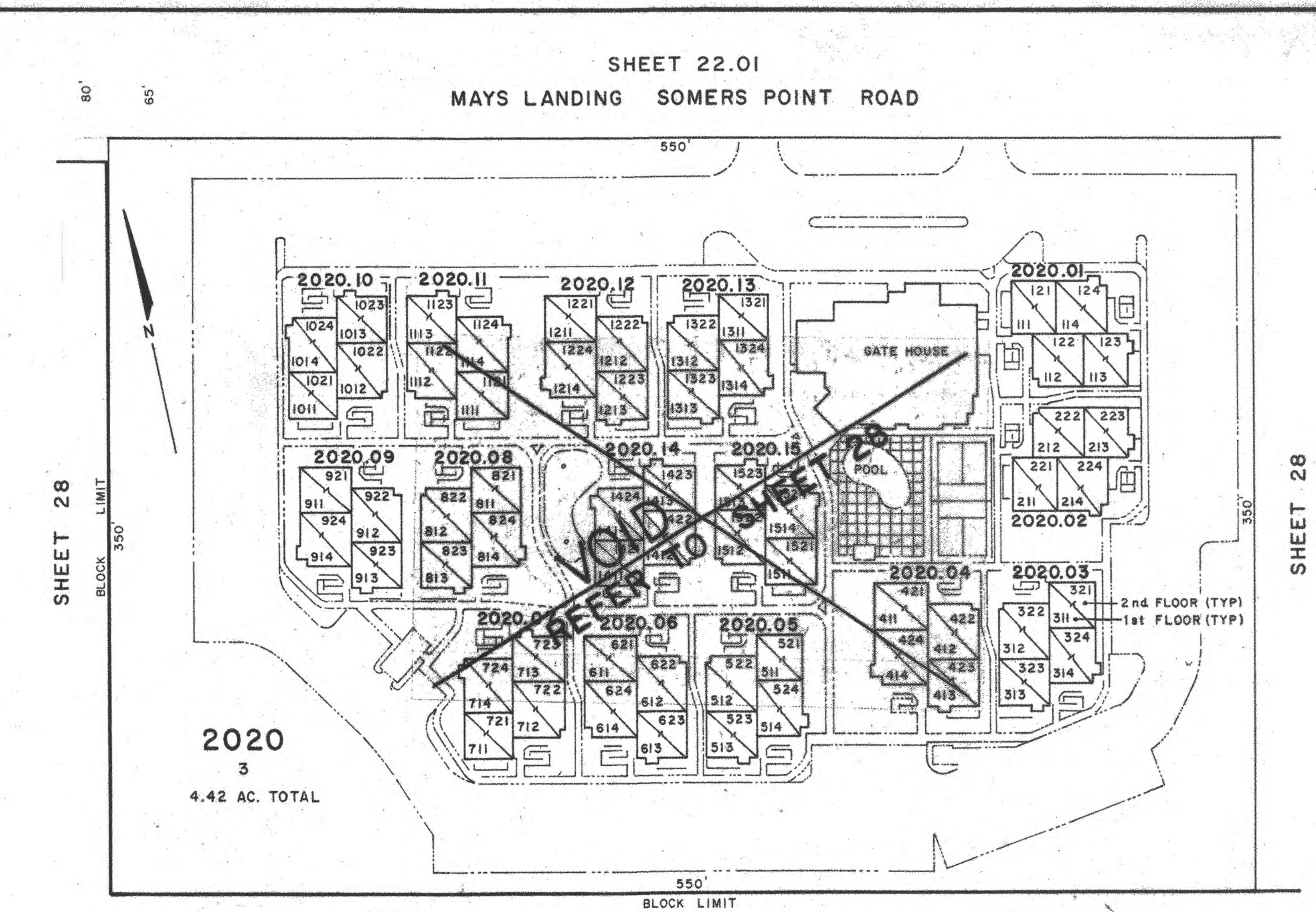
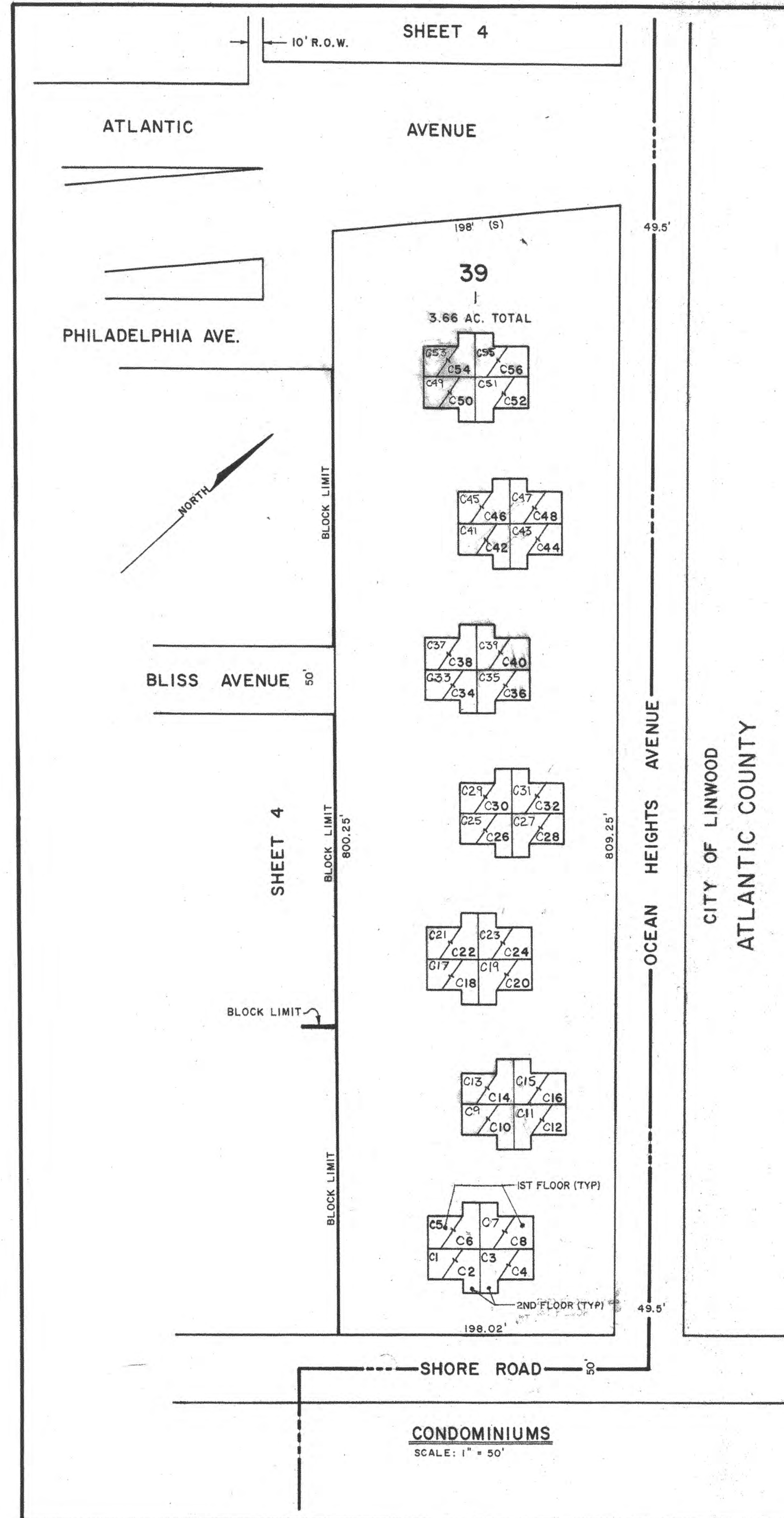


REVISIONS	
WPHA	2-1-86
WPHA	5-19-87
WPHA	12-31-98
WPHA	1-18-07
JSM	1-18-10
JAM	9-1-10
JAM	10-16-12



"RESIDENCE INN"
- CONDOMINIUMS -
NOT TO SCALE

NEW JERSEY DEPARTMENT OF THE TREASURY
DIVISION OF TAXATION
APPROVED AS A TAX MAP PURSUANT TO THE AUTHORITY OF
N.J.S.A. 54:5-6 AND N.J.S.A. 54:5-4
FOR THE DIRECTOR, DIVISION OF TAXATION

Charles M. Miller, CPA
TREASURER, COUNTY OF ATLANTIC, NEW JERSEY

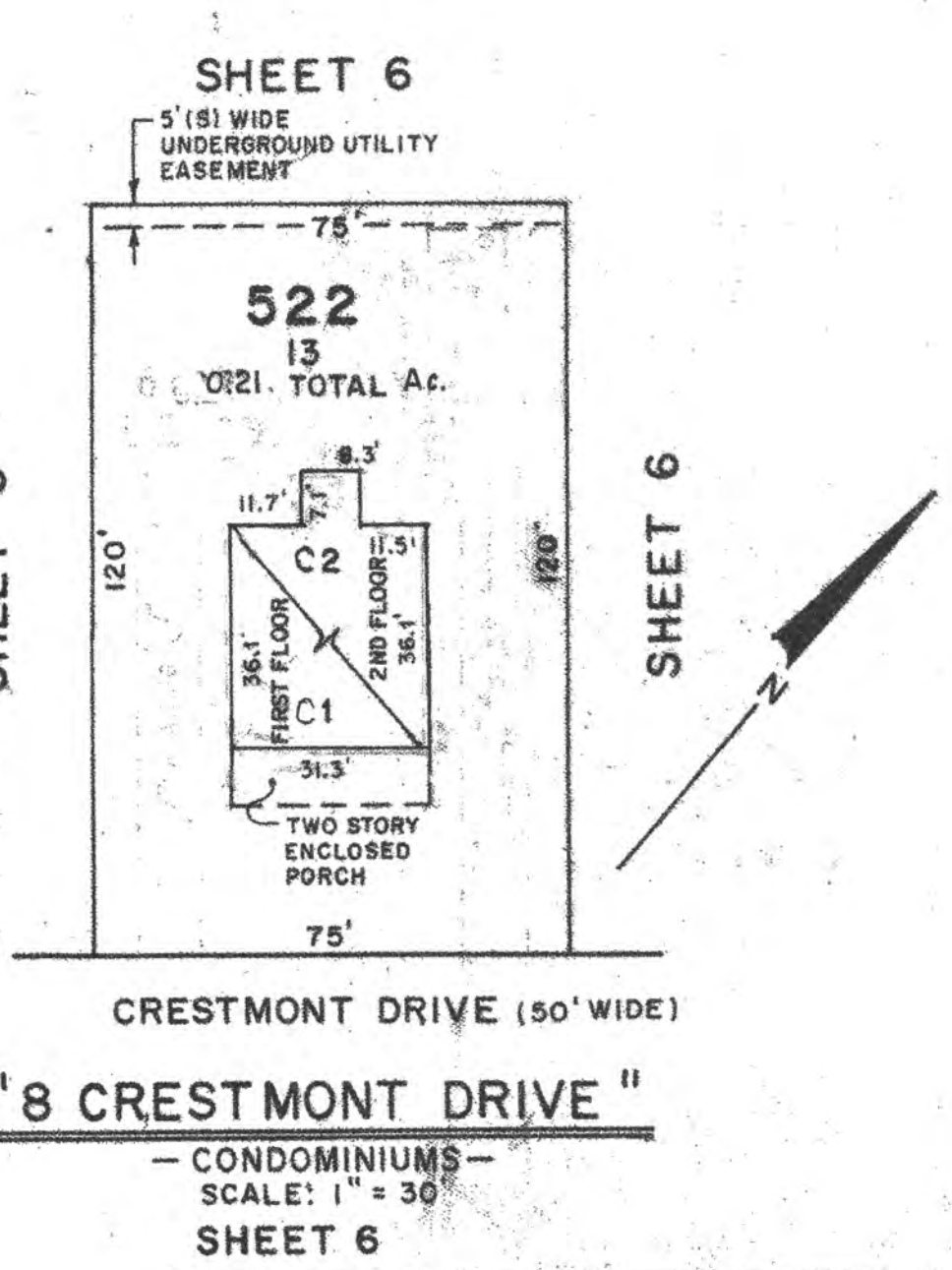
William H. Fields
TREASURER, COUNTY OF ATLANTIC, NEW JERSEY

DATE: JAN 13 2015 SERIAL NO. 1052

NEW JERSEY DEPARTMENT OF THE TREASURY
DIVISION OF TAXATION
PROPERTY ADMINISTRATION
APPROVED AS A TAX MAP PURSUANT TO THE AUTHORITY OF
N.J.S.A. 54:5-6 AND N.J.S.A. 54:5-4
FOR THE DIRECTOR, DIVISION OF TAXATION

William H. Fields
TREASURER, COUNTY OF ATLANTIC, NEW JERSEY

DATE: SEP 17 2010 SERIAL NO. 961



TAX MAP
CITY OF SOMERS POINT
ATLANTIC COUNTY, NEW JERSEY

SCALE: AS NOTED SEPTEMBER, 1982

TO SHOW CONDITIONS AS OF: 11-17-14

JOHN R. WALKER
OCEAN CITY, N.J.
N.J. LICENSE NO. 10294

Note: All qualifiers shown are listed as COXXX.
Where XXX equals the qualifier shown on the map.
Example:
One digit qualifiers - C0001
Two digit qualifiers - C0011
Three digit qualifiers - C0111