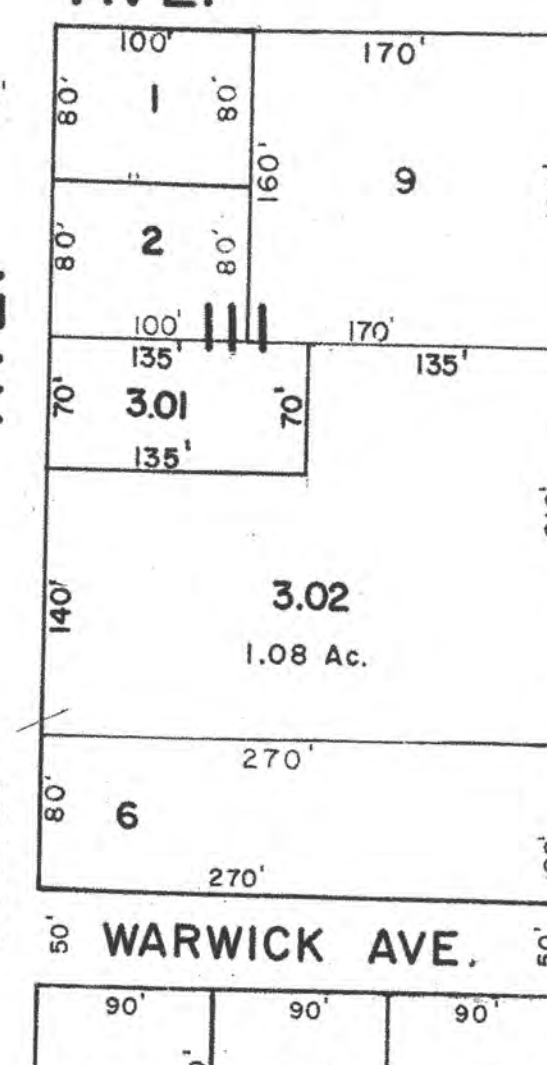
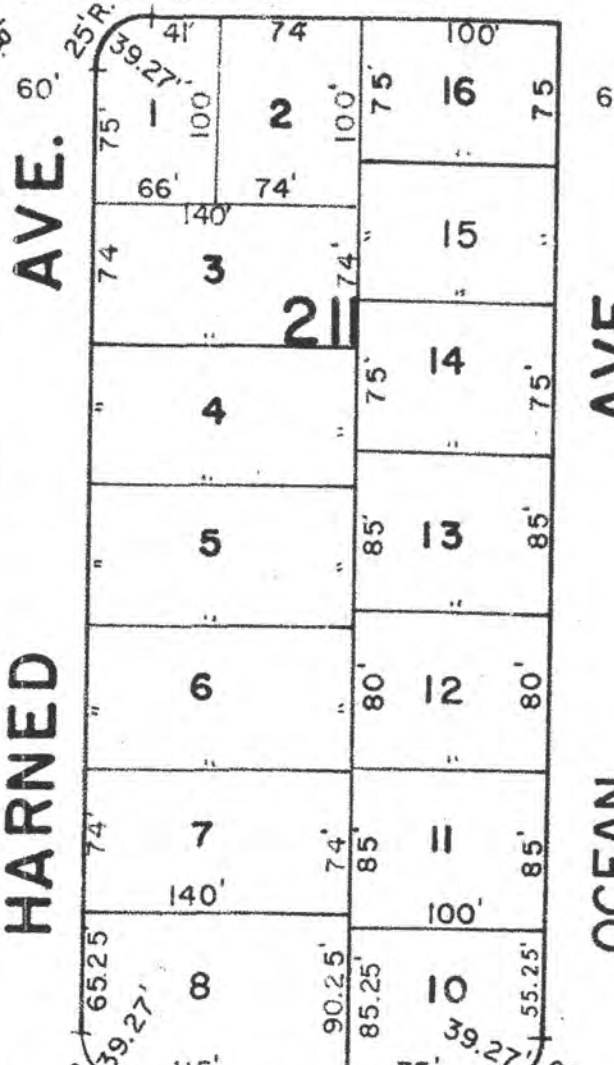
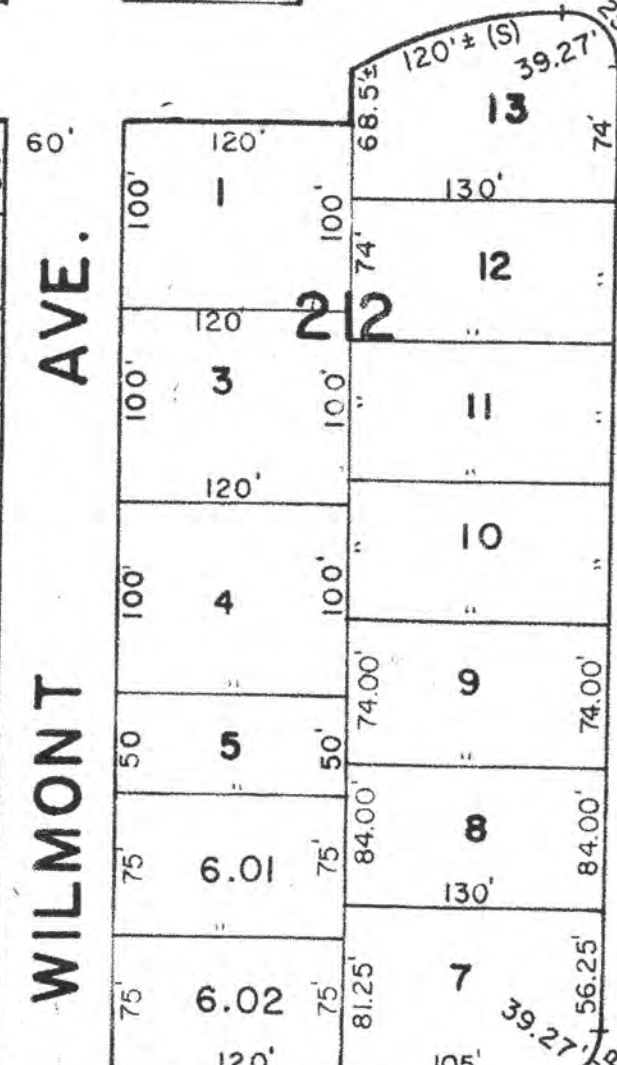
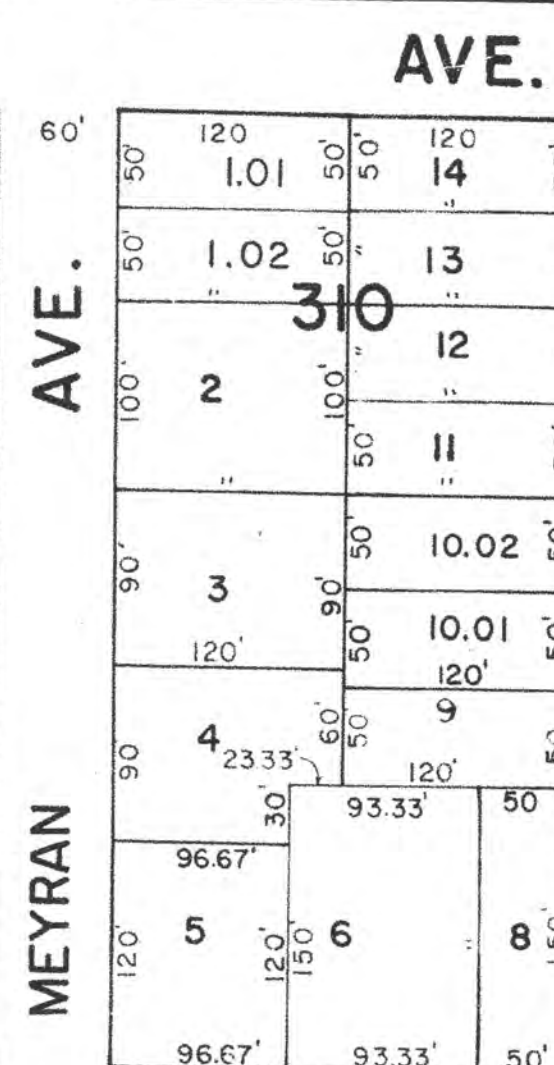
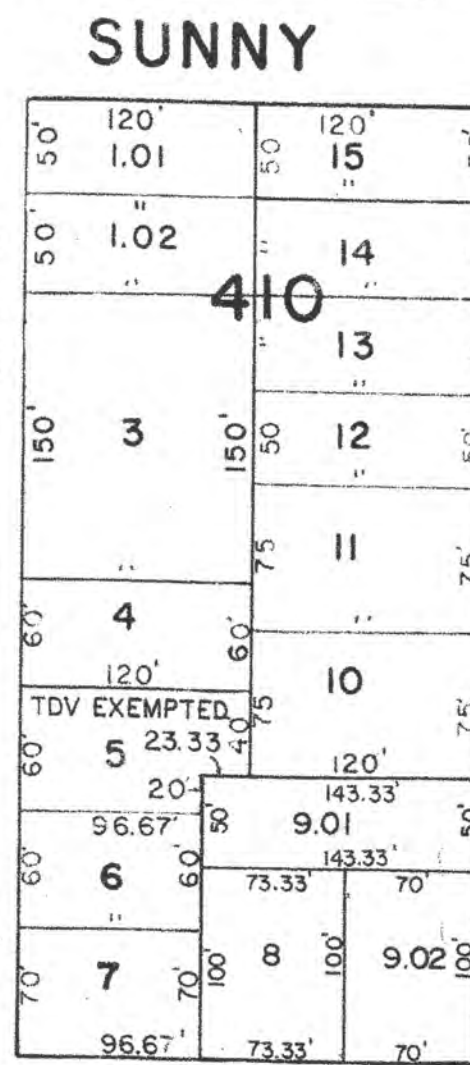
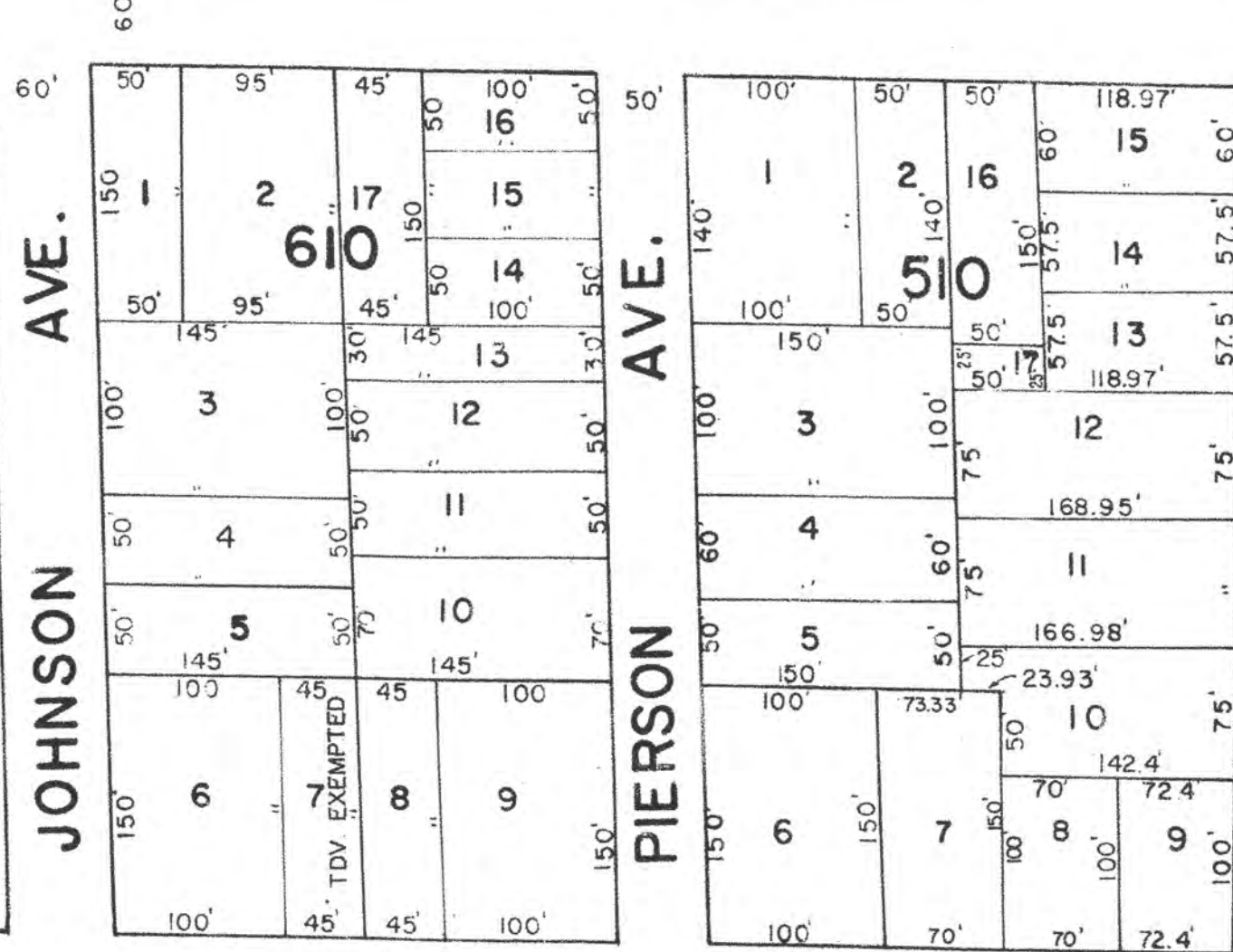


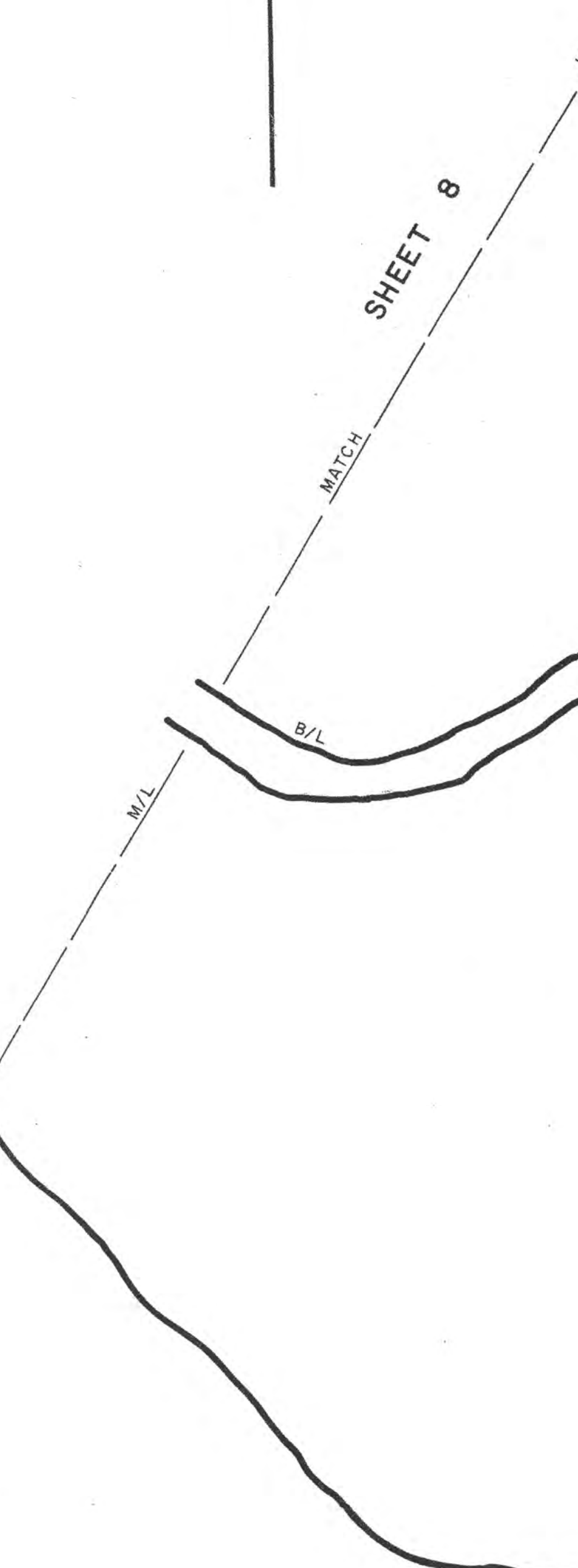
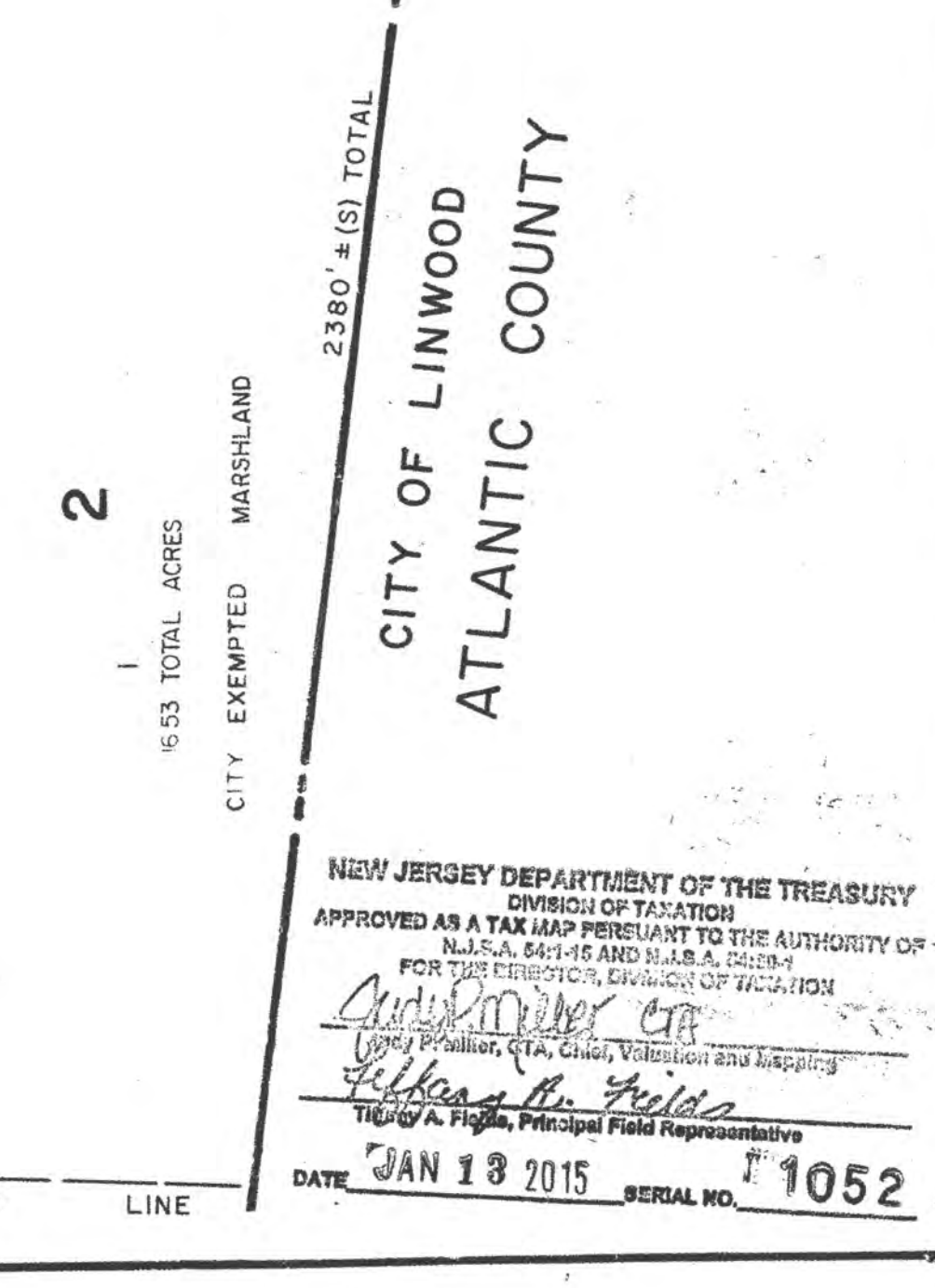
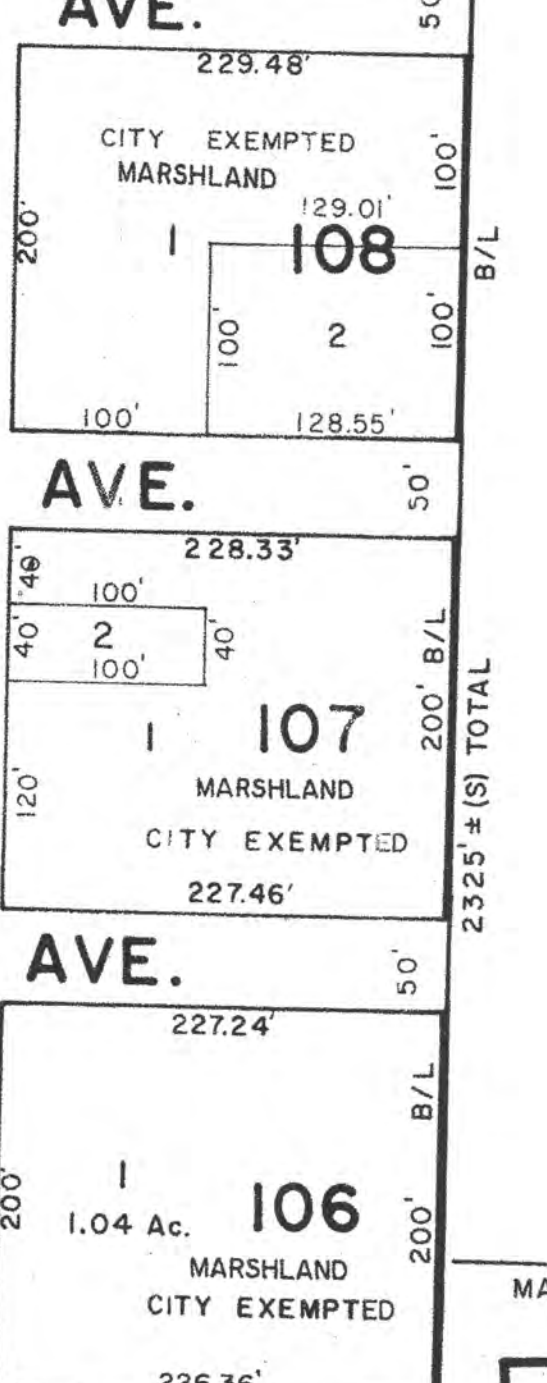
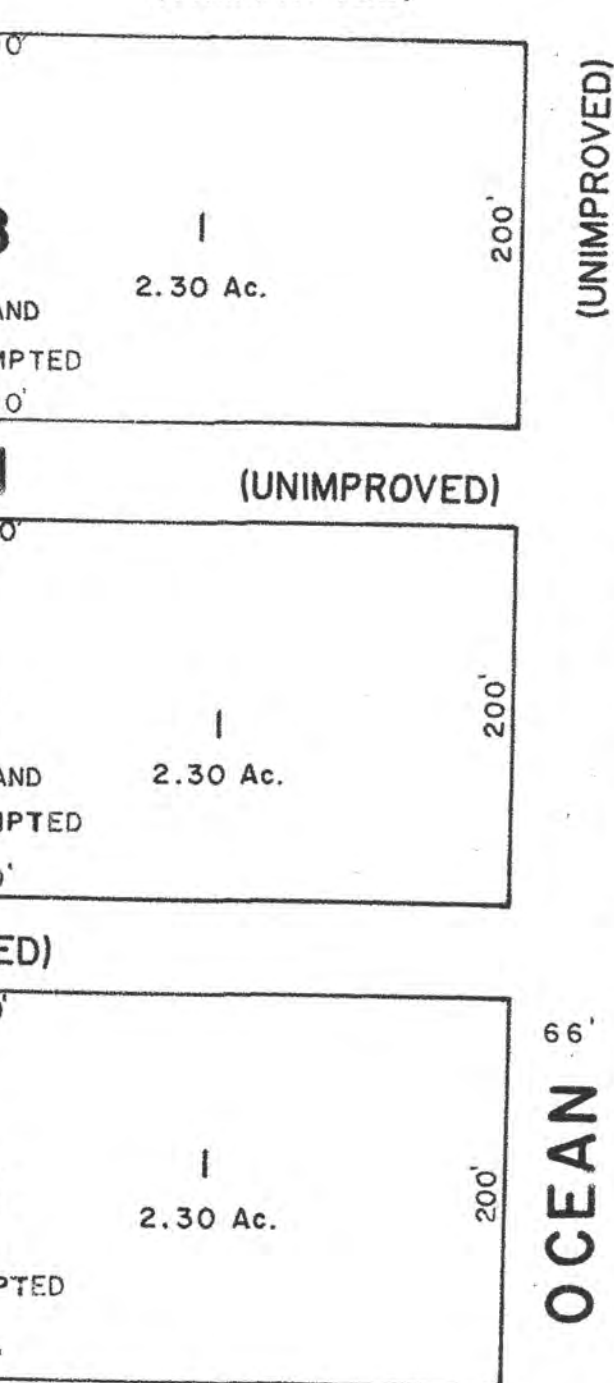
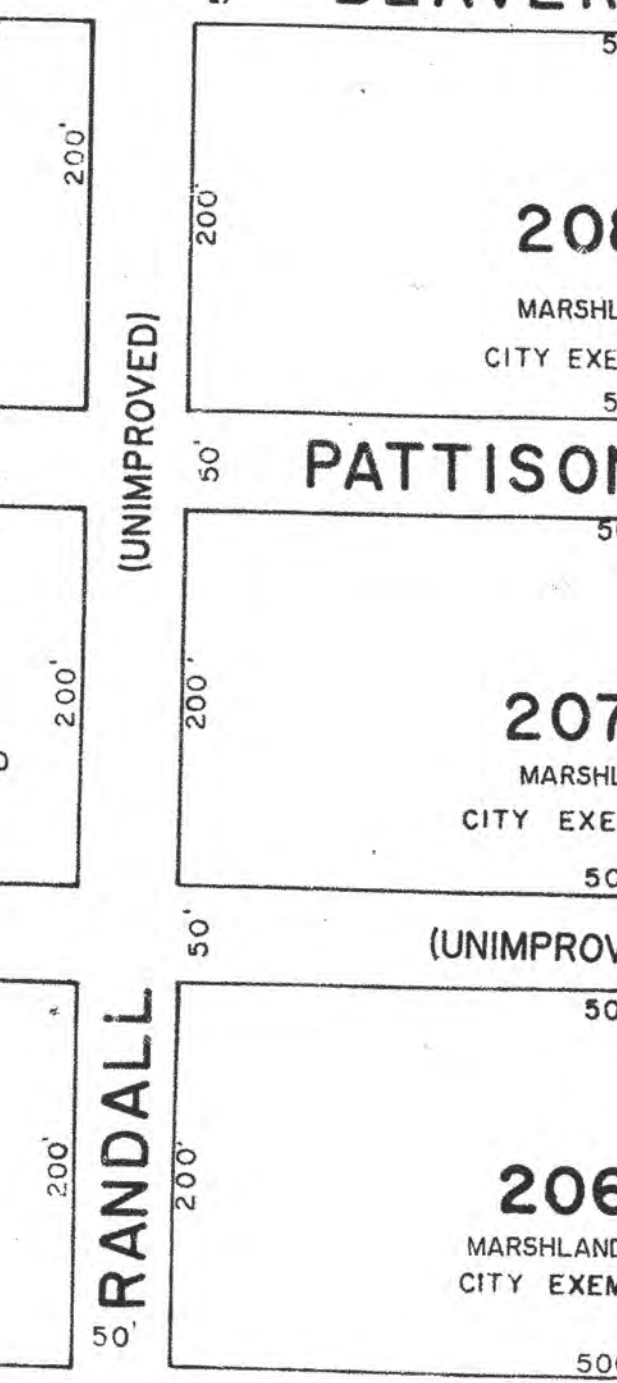
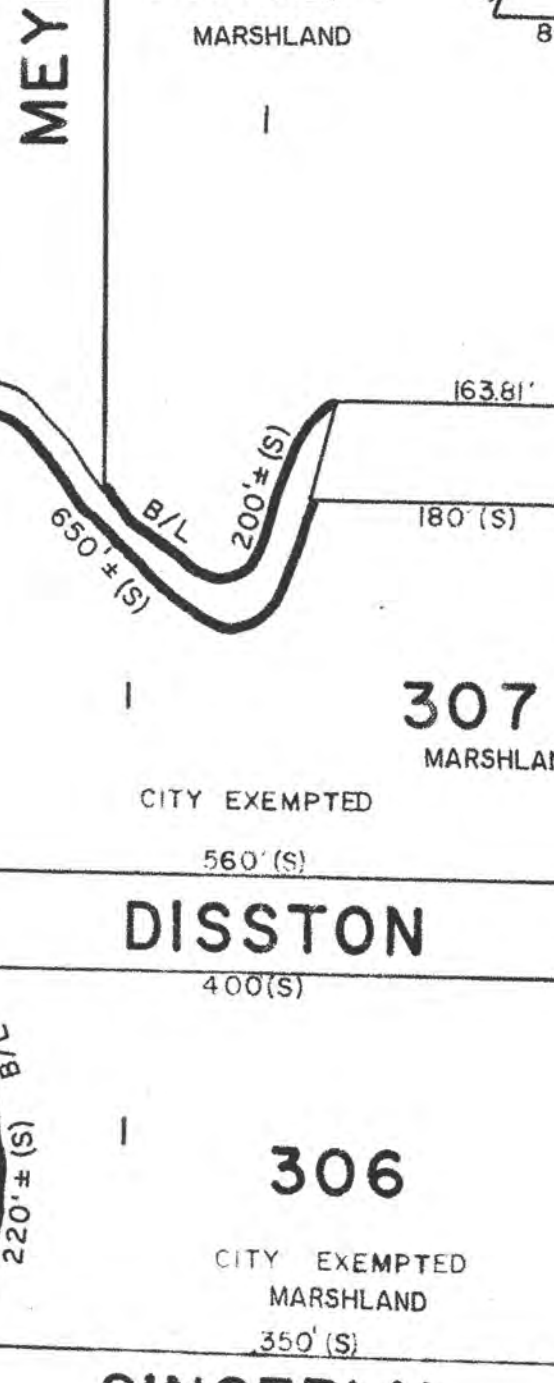
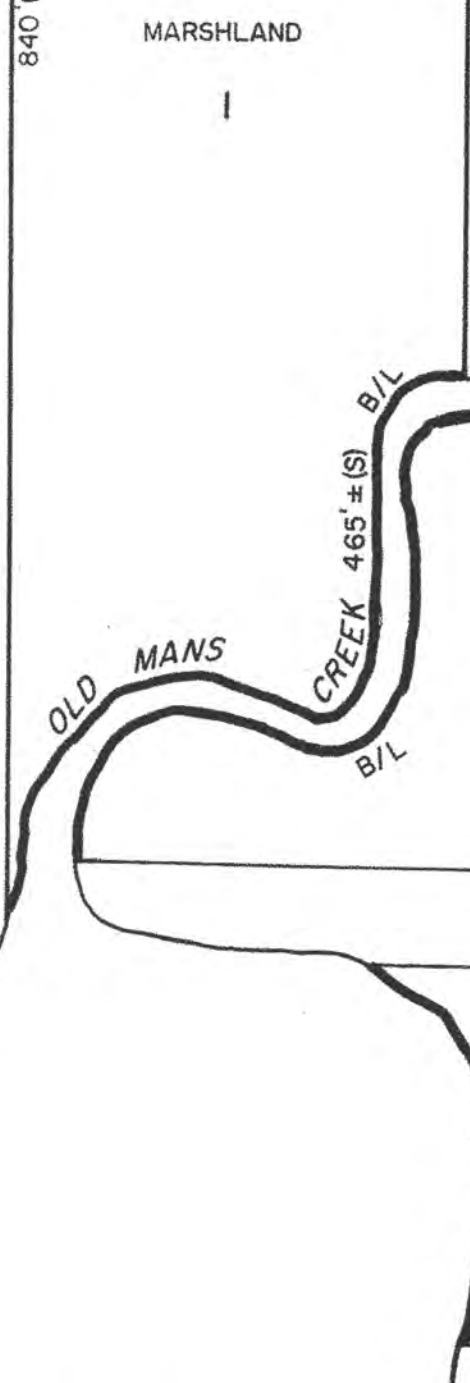
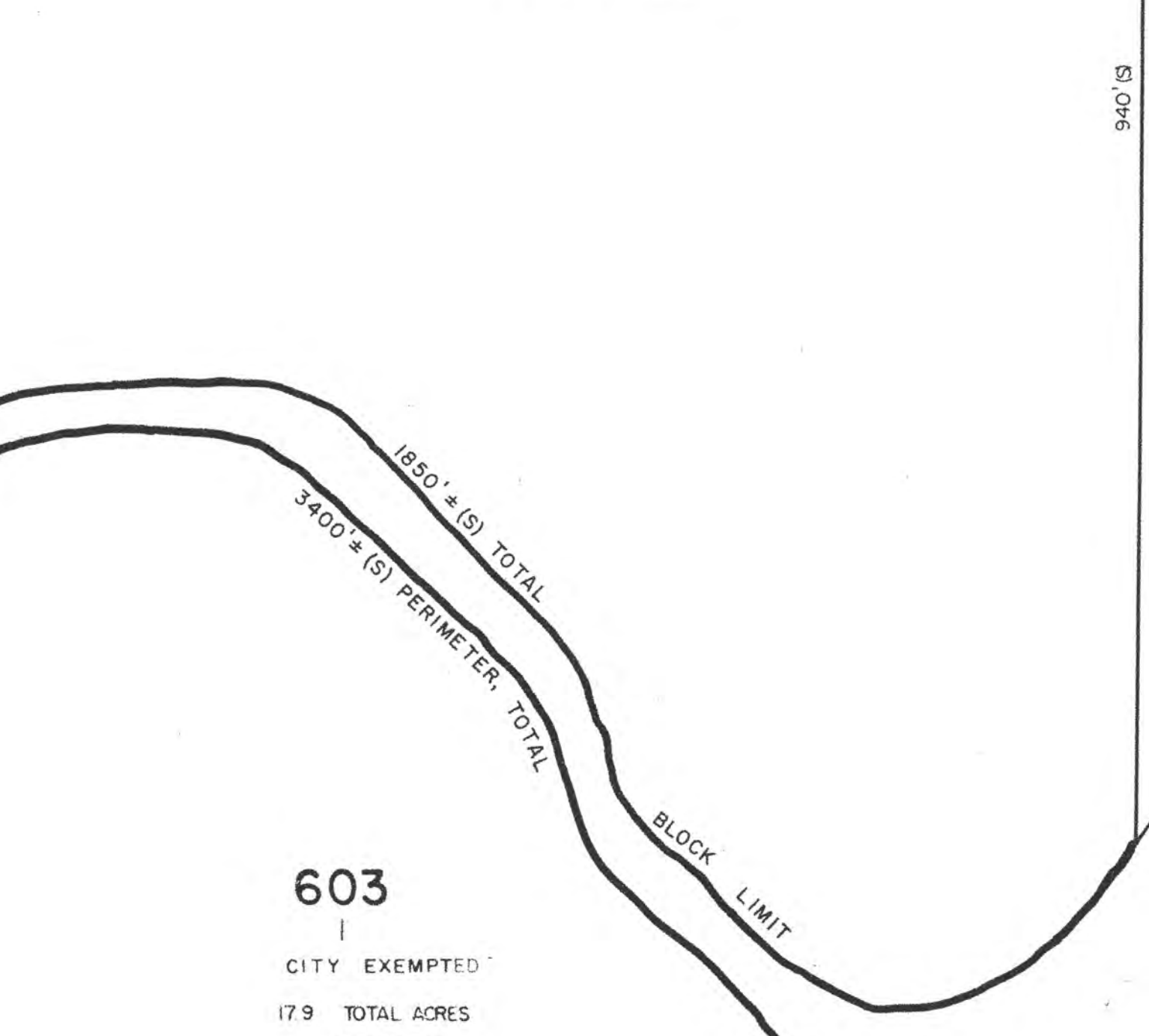
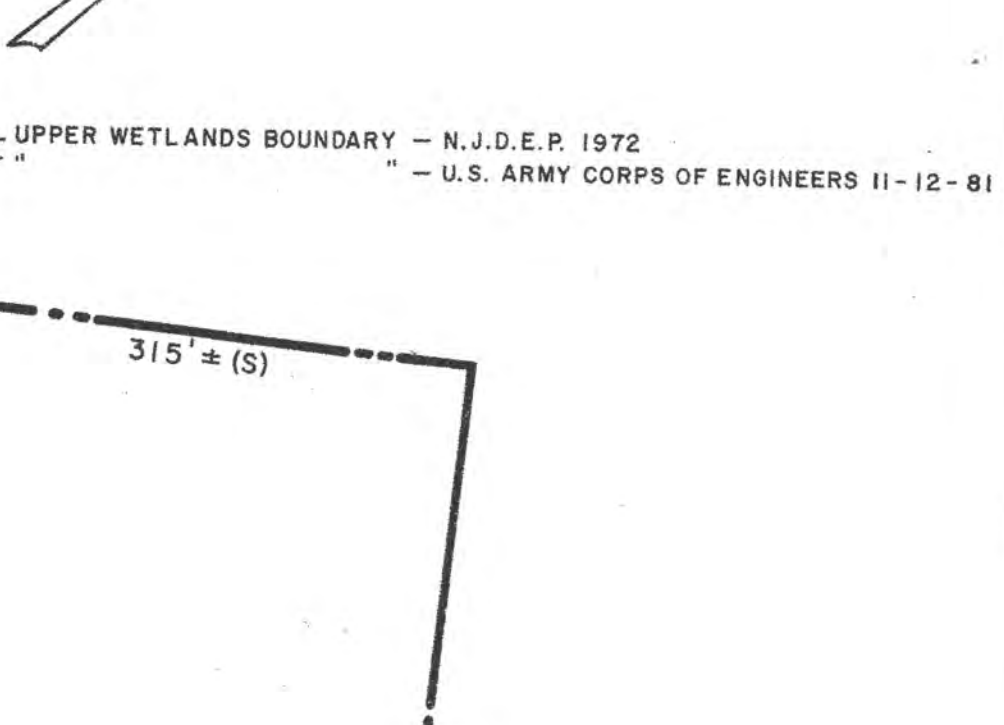
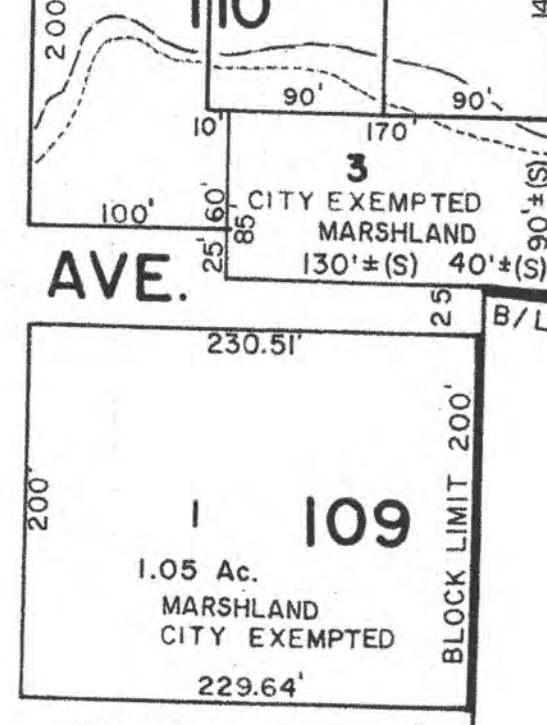
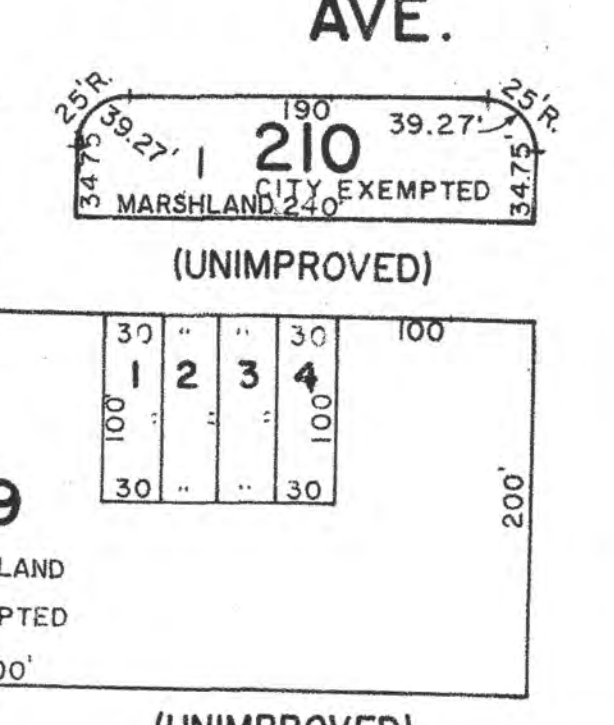
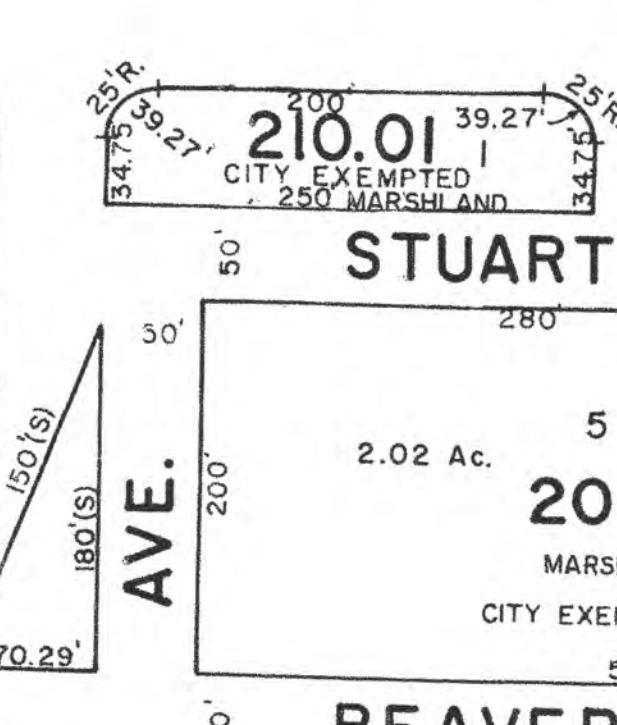
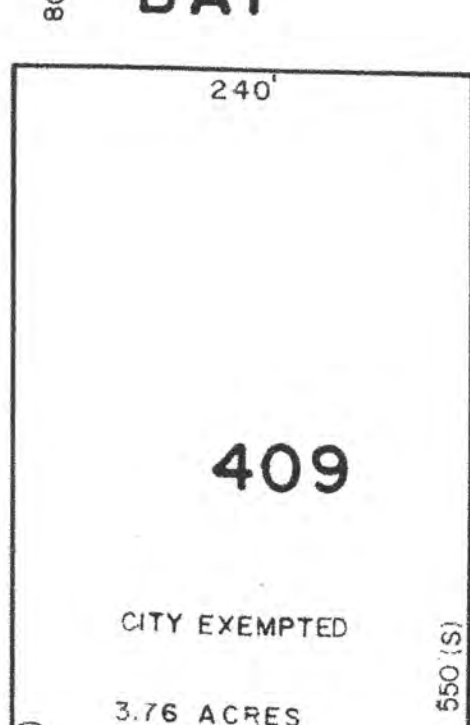
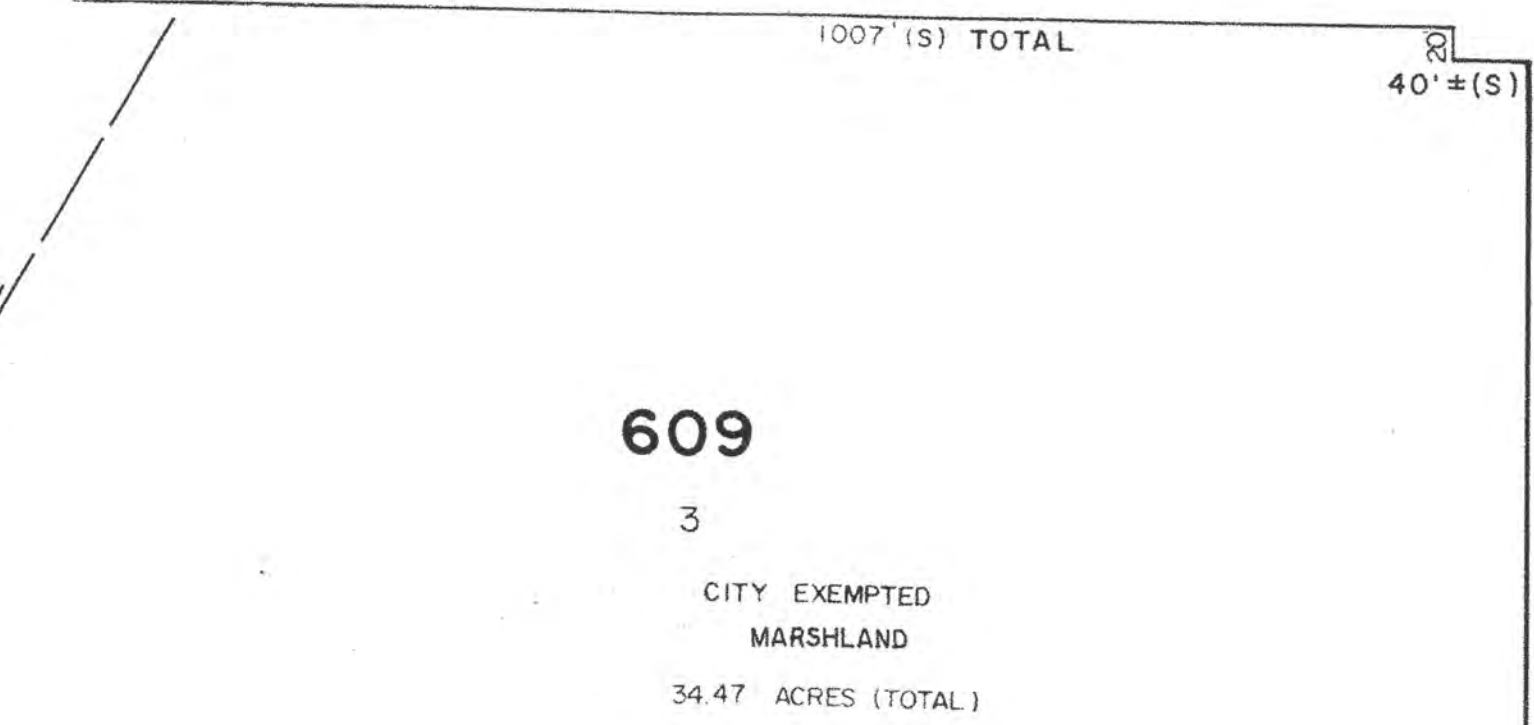
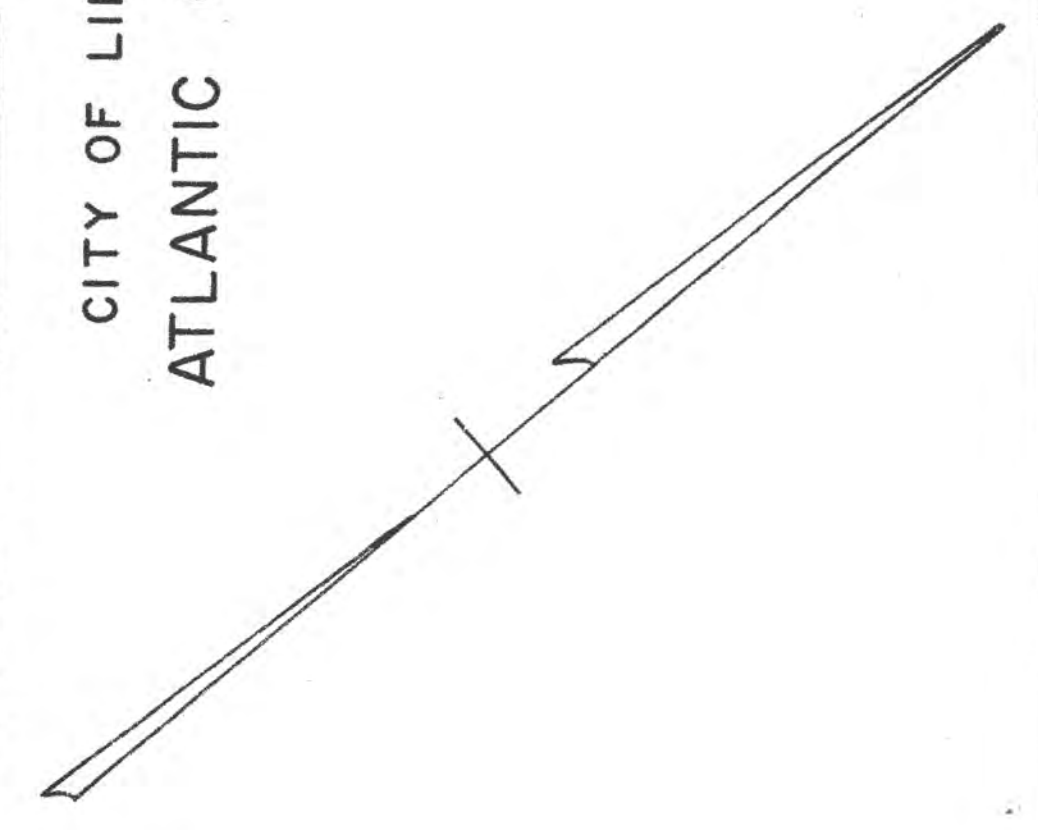
REVISIONS
 WPHA 10-31-88
 WPHA 12-6-89
 WPHA 5-29-96
 WPHA 1-23-02
 WPHA 1-18-07
 JAM 4-23-09

SHEET-4

SHEET 8



CITY OF LINWOOD
 ATLANTIC COUNTY



STEELMAN'S BAY

NEW JERSEY DEPARTMENT OF THE TREASURY
 DIVISION OF TAXATION
 PROPERTY ADMINISTRATION
 APPROVED AS A TAX MAP PURSUANT TO THE AUTHORITY OF
 N.J.S.A. 54:16-16 AND 54:16-17
 FOR THE DIRECTOR, DIVISION OF TAXATION
 DATE: SEP 17 2010 SERIAL NO. 961

SHEET 2

WPHA 2-1-86
 WPHA 3-26-84
 WPTH 7-15-83
 REVISIONS

APPROVED - THE PUBLIC UTILITY TAX BUREAU
 NEW JERSEY DEPARTMENT OF THE TREASURY
 DIVISION OF TAXATION
 PUBLIC UTILITY TAX BUREAU
 APPROVED AS A TAX MAP PURSUANT TO THE
 PROVISIONS OF CHAPTER 175, LAWS OF 1913 ETC
 FOR THE DIRECTOR, DIVISION OF TAXATION
 DATE: JAN 28 1969 SERIAL NO. 466

TAX MAP
 CITY OF SOMERS POINT
 ATLANTIC COUNTY, NEW JERSEY
 SCALE: 1" = 100'
 NOVEMBER, 1968
 TO SHOW CONDITIONS AS OF: 11-17-14
 JOHN R. WALKER
 738 SHORE ROAD
 SOMERS POINT, N.J.

NEW JERSEY DEPARTMENT OF THE TREASURY
 DIVISION OF TAXATION
 APPROVED AS A TAX MAP PURSUANT TO THE AUTHORITY OF
 N.J.S.A. 54:16 AND 54:17
 FOR THE DIRECTOR, DIVISION OF TAXATION
 DATE: JAN 18 2015 SERIAL NO. 1052