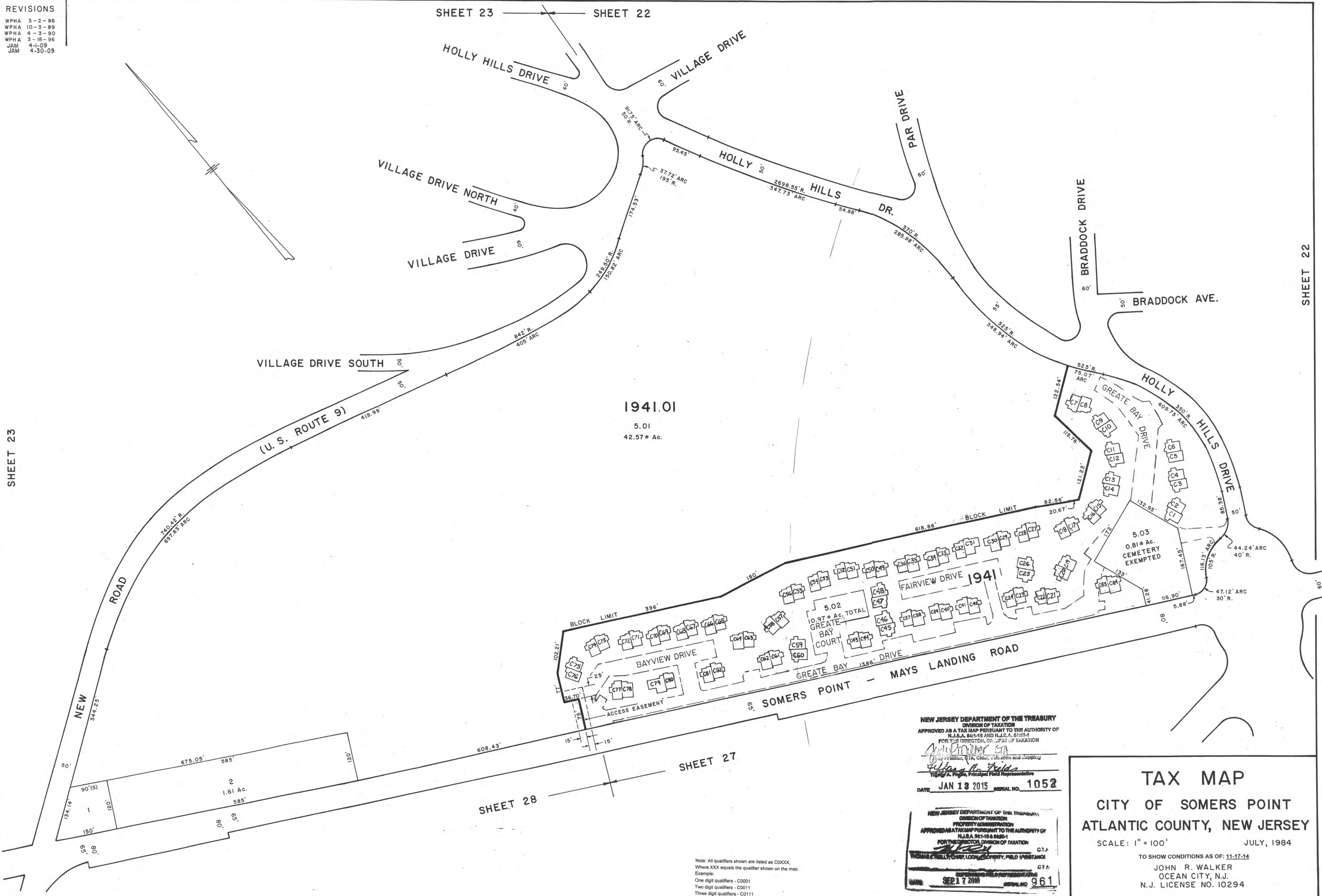


REVISIONS
 WPHA 3-2-86
 WPHA 10-3-89
 WPHA 4-3-90
 WPHA 3-18-96
 JAM 4-1-09
 JAM 4-30-09

SHEET 23 SHEET 22

SHEET 23

SHEET 22



1941.01
 5.01
 42.57 ± Ac.

NEW JERSEY DEPARTMENT OF THE TREASURY
 DIVISION OF TAXATION
 APPROVED AS A TAX MAP PURSUANT TO THE AUTHORITY OF
 N.J.A.C. 17:27 AND N.J.A.C. 17:28.4
 FOR THE DIRECTOR, DIVISION OF TAXATION
[Signature]
 William C. Hill, CTA, Chief, Valuation and Mapping
 William C. Hill, CTA, Chief, Valuation and Mapping
 DATE: JAN 13 2015 SERIAL NO. 1052

NEW JERSEY DEPARTMENT OF THE TREASURY
 DIVISION OF TAXATION
 PROPERTY ADMINISTRATION
 APPROVED AS A TAX MAP PURSUANT TO THE AUTHORITY OF
 N.J.A.C. 17:27 AND N.J.A.C. 17:28.4
 FOR THE DIRECTOR, DIVISION OF TAXATION
[Signature]
 William C. Hill, CTA, Chief, Valuation and Mapping
 William C. Hill, CTA, Chief, Valuation and Mapping
 DATE: SEP 17 2010 SERIAL NO. 961

TAX MAP
 CITY OF SOMERS POINT
 ATLANTIC COUNTY, NEW JERSEY
 SCALE: 1" = 100'
 JULY, 1984
 TO SHOW CONDITIONS AS OF: 11-17-14
 JOHN R. WALKER
 OCEAN CITY, N.J.
 N.J. LICENSE NO. 10294

Note: All qualifiers shown are listed as C0000.
 Where XXX equals the qualifier shown on the map.
 Example:
 One digit qualifiers - C0001
 Two digit qualifiers - C0011
 Three digit qualifiers - C0111