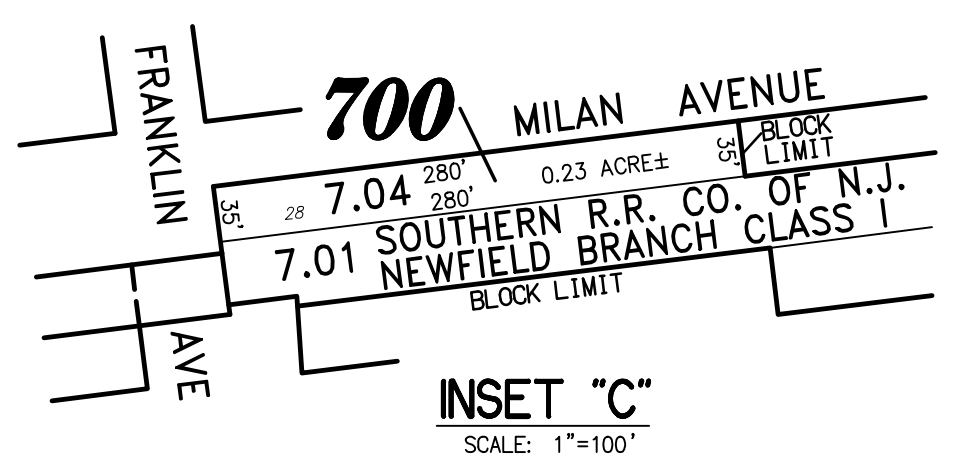
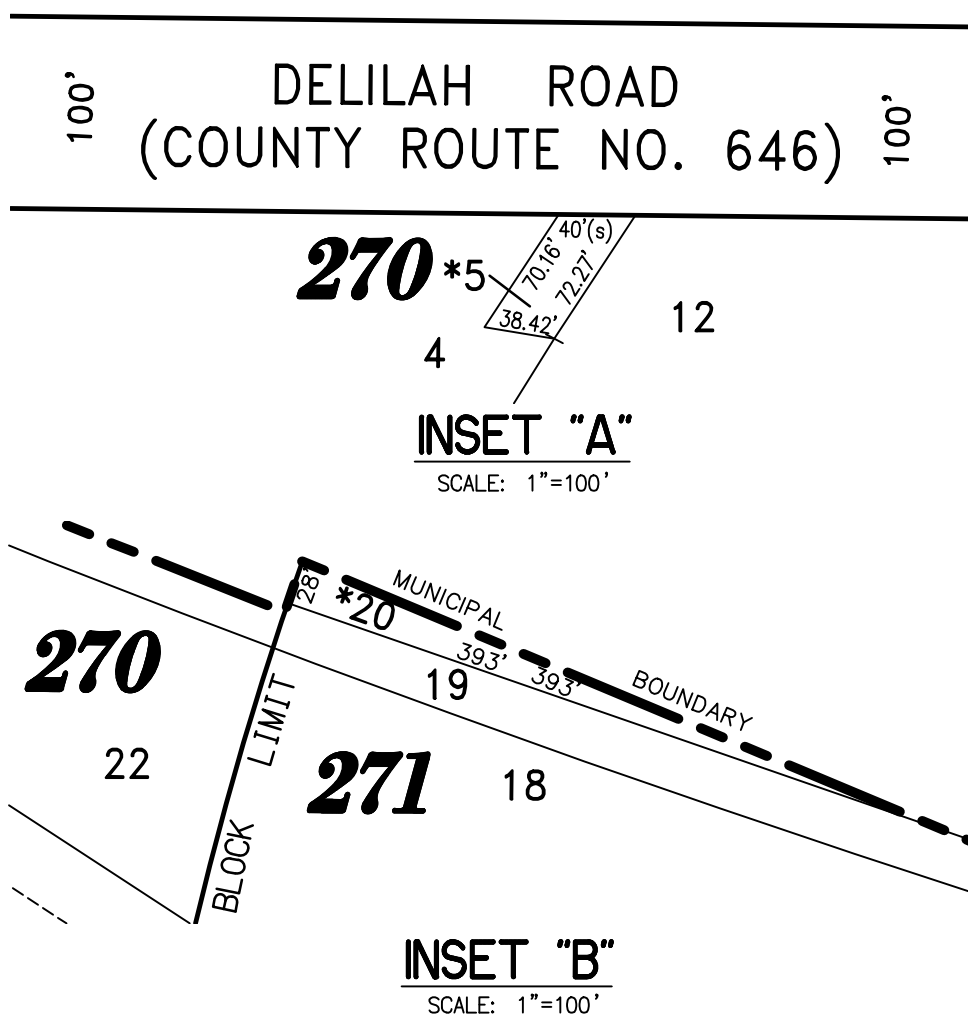
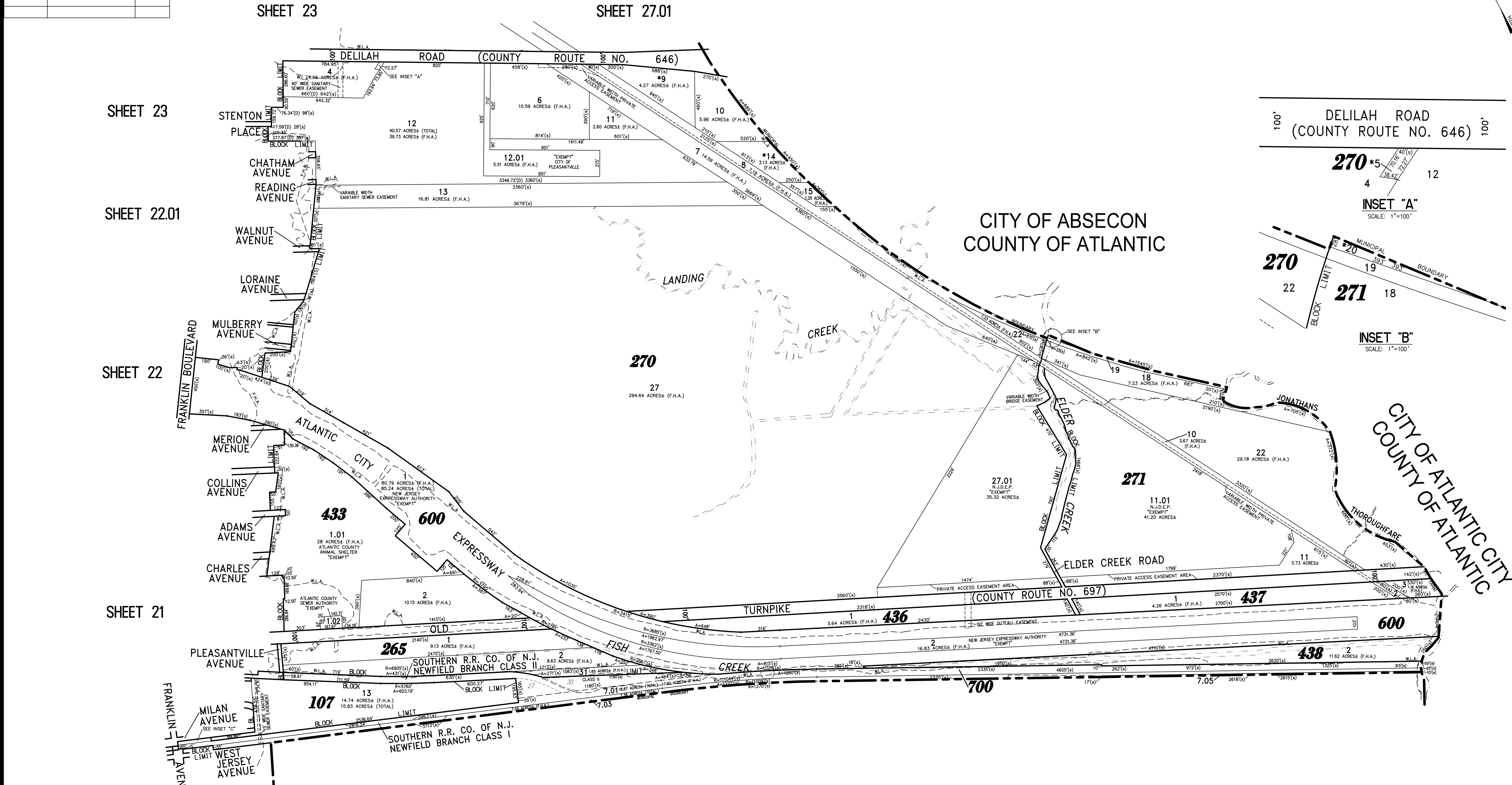
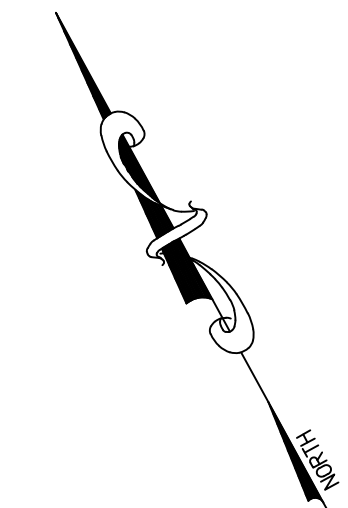


REVISIONS		
5-01-2009	CRAIG F. REMINGTON	23924
7-22-2011	CRAIG F. REMINGTON	23924
6-14-2017	CHARLES E. ADAMSON	42627
1-15-2019	CHARLES E. ADAMSON	42627

NOTE:
THIS SHEET HAS BEEN DRAWN USING COMPUTER AIDED DRAFTING/DESIGN (CAD/D) AND COORDINATE GEOMETRY (COGO).



THIS MAP HAS BEEN GIVEN A FORMAL CERTIFICATION BY THE DIVISION OF TAXATION ON NOVEMBER 16, 2007, SIGNED THOMAS J. REILLY, CHIEF, LOCAL PROPERTY, FIELD ASSISTANCE. SANTO C. DIDONATO, SUPERVISING FIELD REPRESENTATIVE, AND ASSIGNED SERIAL NUMBER 914.

TOWNSHIP OF EGG HARBOR
COUNTY OF ATLANTIC

TAX MAP
CITY OF PLEASANTVILLE

ATLANTIC COUNTY NEW JERSEY
SCALE: 1" = 400' DATE: 6-17-2003
CRAIG F. REMINGTON LAND SURVEYOR LIC. NO. 23924

RV & W
REMINGTON, VERNICK & WALBERG ENGINEERS
24 GA. 28048700
845 N. MAIN STREET, PLEASANTVILLE, N.J. 08232
(609) 645-7100. FAX (609) 645-7076
WEB SITE ADDRESS: WWW.RVW.COM