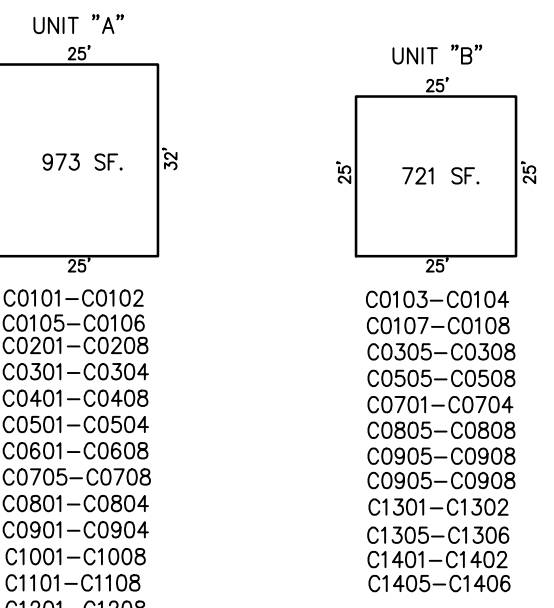
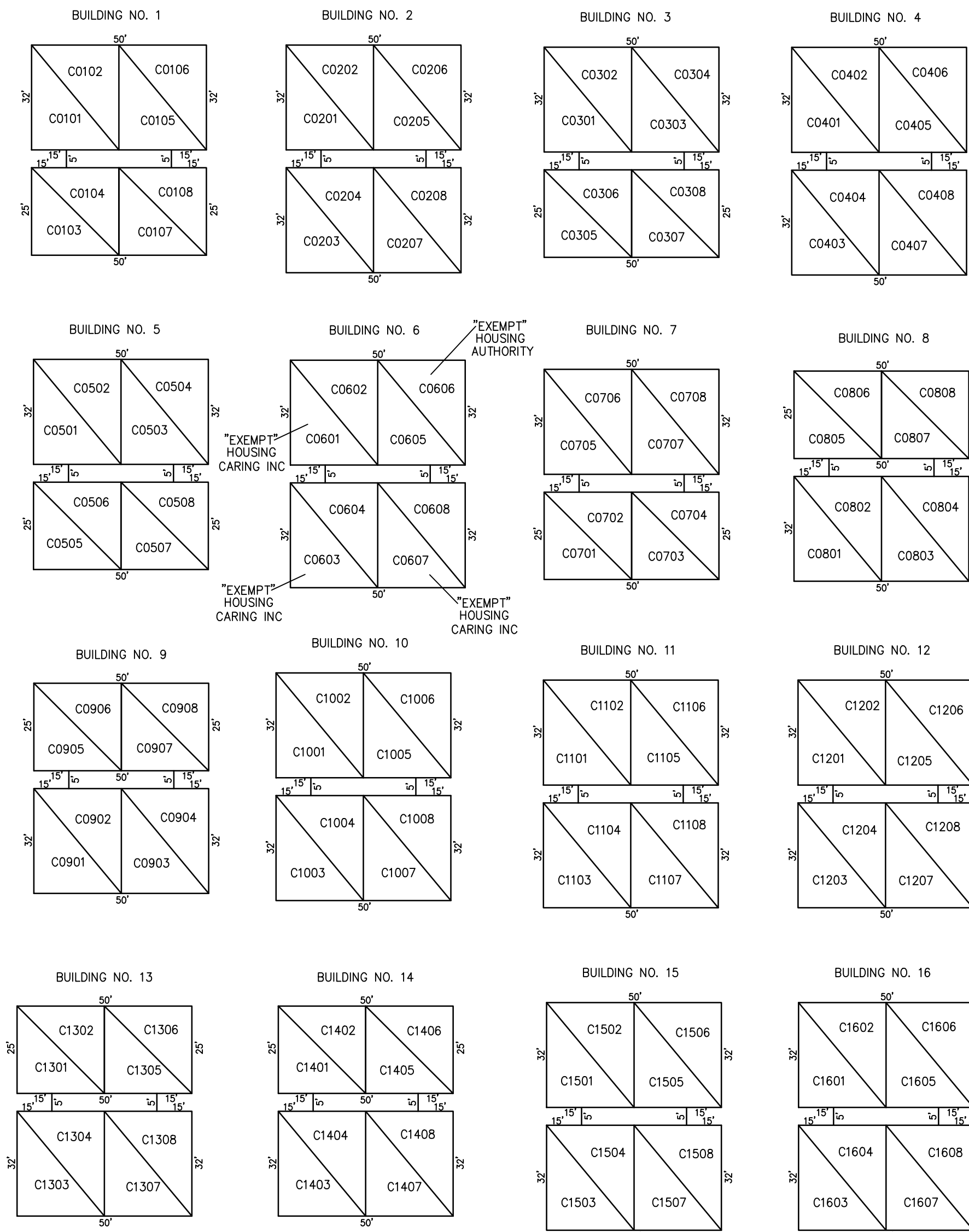


NOTE: THIS SHEET HAS BEEN DRAWN USING COMPUTER AIDED DRAFTING/DESIGN (CAD/D) AND COORDINATE GEOMETRY (COGO).

REVISIONS		
5-01-2009	CRAIG F. REMINGTON	23924
1-15-2019	CHARLES E. ADAMSON	42627

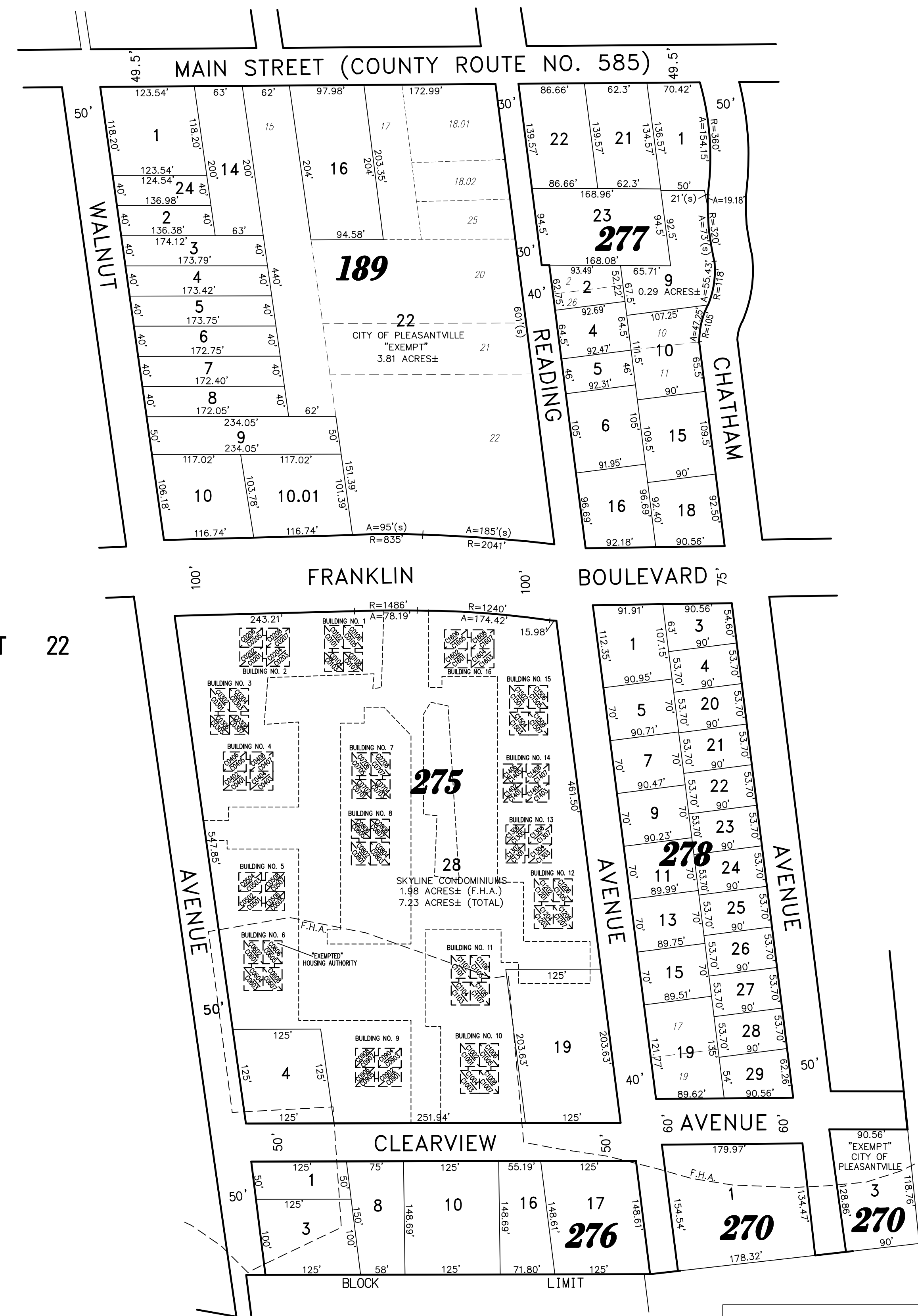
SHEET 16

BLOCK 275, LOT 28



NOTE: 1. DIMENSIONS AND SQUARE FOOTAGE ARE TYPICAL FOR ALL SIMILAR UNITS  
2. EVEN NUMBERS INDICATE SECOND FLOOR UNITS. ODD NUMBERS INDICATE FIRST FLOOR UNITS

SKYLINE CONDOMINIUMS  
INSET "A"  
SCALE: 1"=30'



SHEET 22

SHEET 23

SHEET 27

THIS MAP HAS BEEN GIVEN A FORMAL CERTIFICATION BY THE DIVISION OF TAXATION ON NOVEMBER 16, 2007, SIGNED THOMAS J. REILLY, CHIEF, LOCAL PROPERTY, FIELD ASSISTANCE. SANTO C. DIDONATO, SUPERVISING FIELD REPRESENTATIVE, AND ASSIGNED SERIAL NUMBER 914.

TAX MAP  
CITY OF PLEASANTVILLE

ATLANTIC COUNTY NEW JERSEY  
SCALE: 1" = 100' DATE: 6-17-2003

CRAIG F. REMINGTON LAND SURVEYOR LIC. NO. 23924



24 GA 28048700  
REMINGTON, VERNICK & WALBERG ENGINEERS  
845 N. MAIN STREET, PLEASANTVILLE, N.J. 08232  
(609) 645-7100, FAX (609) 645-7076  
WEB SITE ADDRESS: WWW.RVW.COM