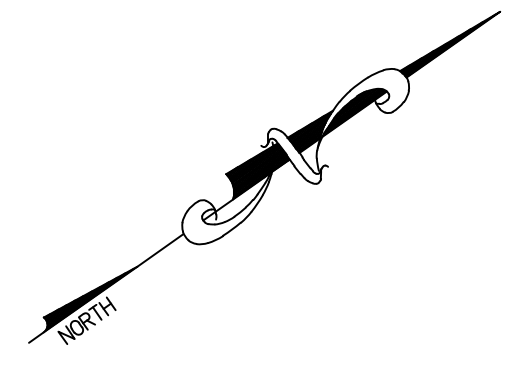
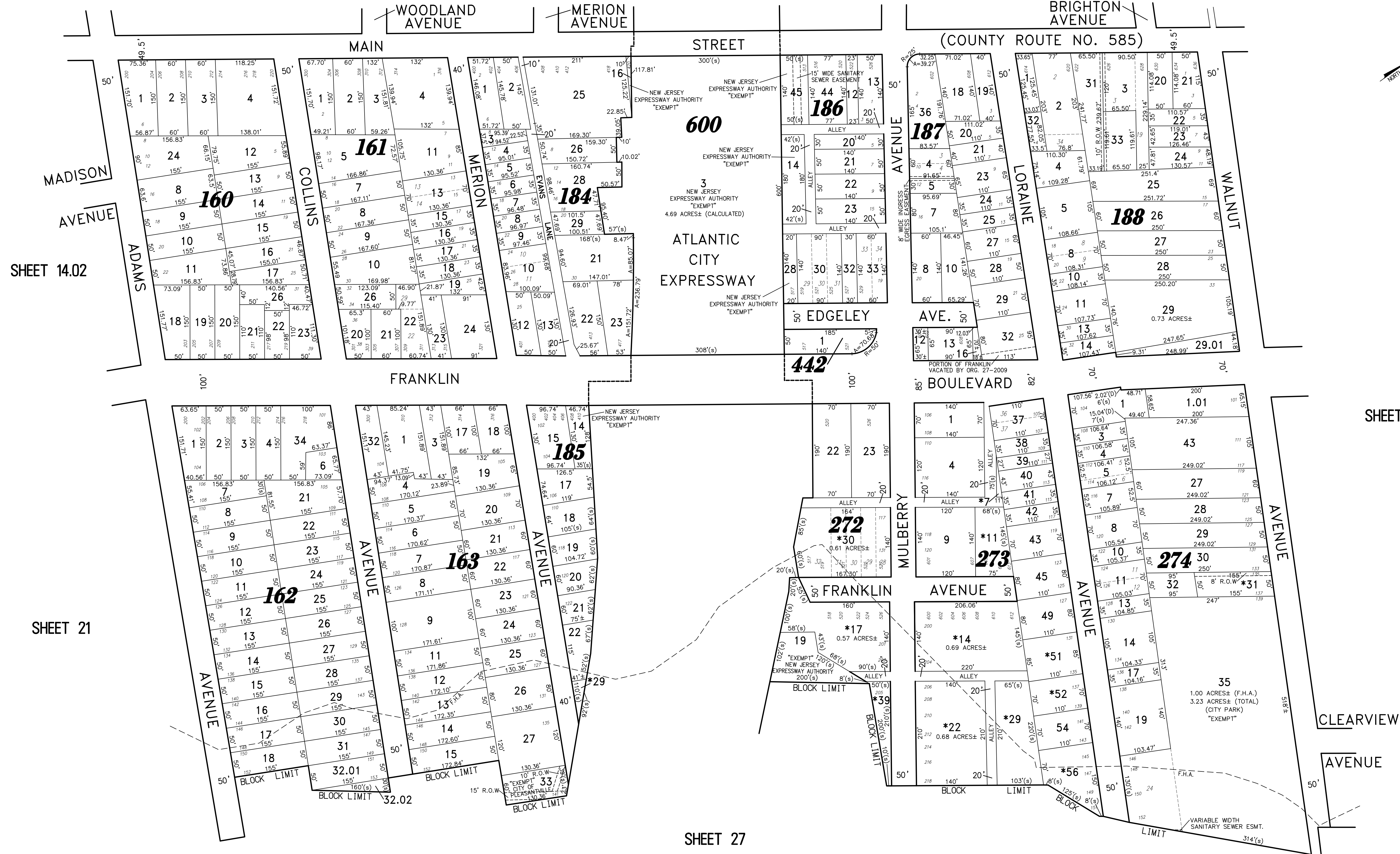


SHEET 14.01

SHEET 15

SHEET 16



SHEET 14.02

SHEET 21

SHEET 22.01

SHEET 27

REVISIONS		
5-01-2009	CRAIG F. REMINGTON	23924
7-22-2011	CRAIG F. REMINGTON	23924
11-15-2019	CHARLES E. ADAMSON	42627

NOTE:
 THIS SHEET HAS BEEN DRAWN USING COMPUTER AIDED DRAFTING/DESIGN (CADD) AND COORDINATE GEOMETRY (COGO).

THIS MAP HAS BEEN GIVEN A FORMAL CERTIFICATION BY THE DIVISION OF TAXATION ON NOVEMBER 16, 2007, SIGNED THOMAS J. REILLY, CHIEF, LOCAL PROPERTY, FIELD ASSISTANCE. SANTO C. DIDONATO, SUPERVISING FIELD REPRESENTATIVE, AND ASSIGNED SERIAL NUMBER 914.



24 GA 28048700
REMINGTON, VERNICK & WALBERG ENGINEERS
 845 N. MAIN STREET, PLEASANTVILLE, NJ 08232
 (609) 645-7700, FAX (609) 645-7076
 WEB SITE ADDRESS: WWW.RVE.COM

TAX MAP

CITY OF PLEASANTVILLE

ATLANTIC COUNTY NEW JERSEY
 SCALE: 1" = 100' DATE: 6-17-2003

CRAIG F. REMINGTON LAND SURVEYOR LIC. NO. 23924