

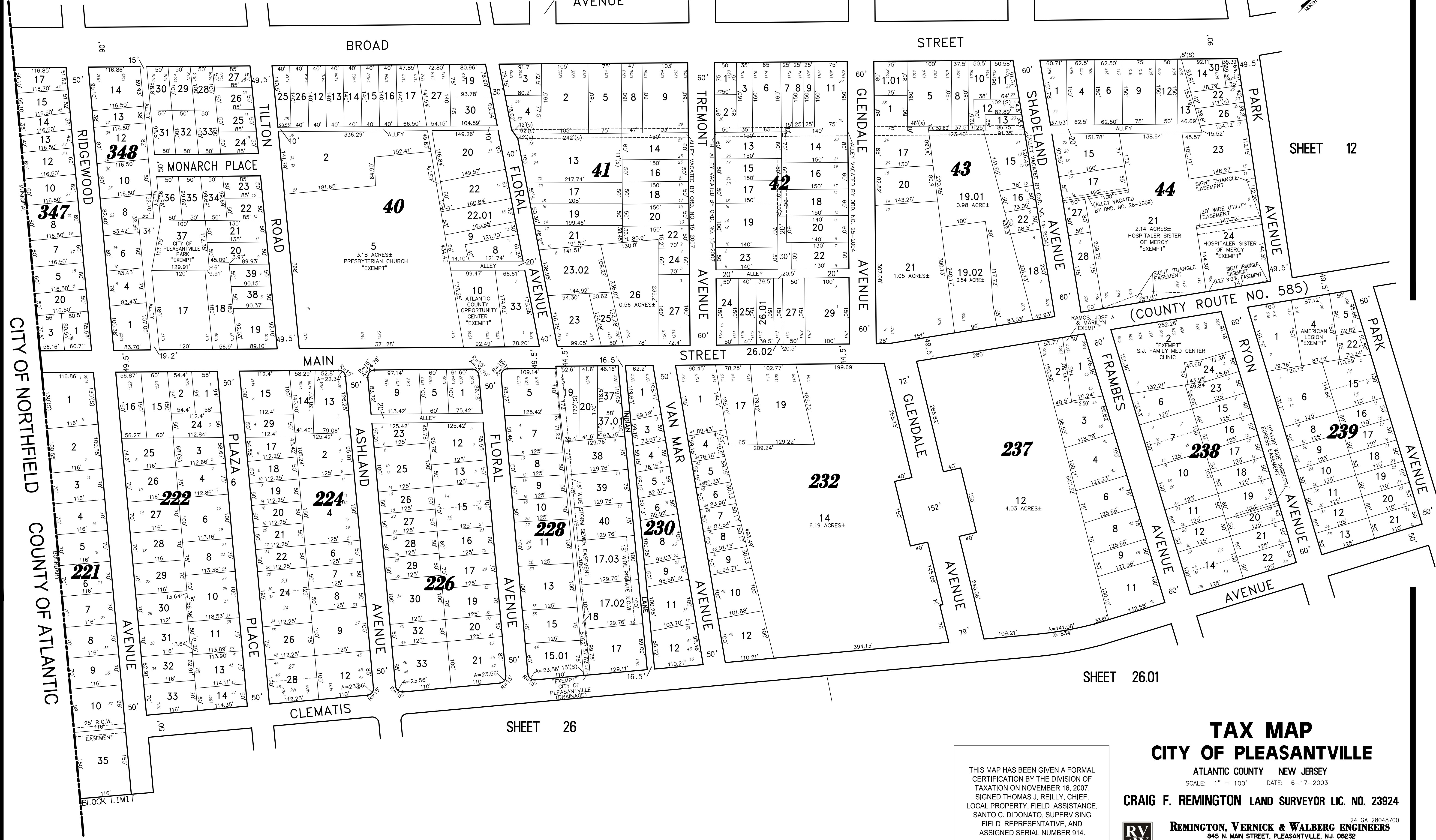
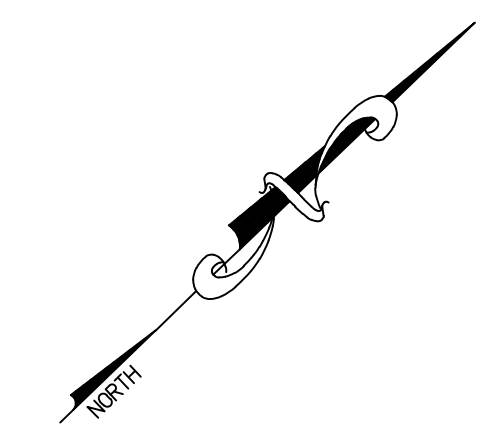
REVISIONS		
5-01-2009	CRAIG F. REMINGTON	23924
7-22-2011	CRAIG F. REMINGTON	23924
6-14-2017	CHARLES E. ADAMSON	42627
1-15-2019	CHARLES E. ADAMSON	42627

NOTE:  
THIS SHEET HAS BEEN DRAWN USING COMPUTER AIDED DRAFTING/DESIGN (CADD) AND COORDINATE GEOMETRY (COGO).

SHEET 11

FERNWOOD AVENUE

SHEET 11.01



CITY OF NORTHFIELD  
COUNTY OF ATLANTIC

SHEET 12

SHEET 26.01

### TAX MAP CITY OF PLEASANTVILLE

ATLANTIC COUNTY NEW JERSEY  
SCALE: 1" = 100' DATE: 6-17-2003

CRAIG F. REMINGTON LAND SURVEYOR LIC. NO. 23924



REMINGTON, VERNICK & WALBERG ENGINEERS  
24 GA 28048700  
845 N. MAIN STREET, PLEASANTVILLE, N.J. 08232  
(609) 645-7100, FAX (609) 645-7076  
WEB SITE ADDRESS: WWW.RVW.COM

THIS MAP HAS BEEN GIVEN A FORMAL CERTIFICATION BY THE DIVISION OF TAXATION ON NOVEMBER 16, 2007, SIGNED THOMAS J. REILLY, CHIEF, LOCAL PROPERTY, FIELD ASSISTANCE, SANTO C. DIDONATO, SUPERVISING FIELD REPRESENTATIVE, AND ASSIGNED SERIAL NUMBER 914.