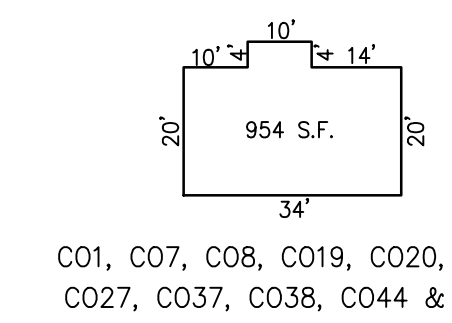
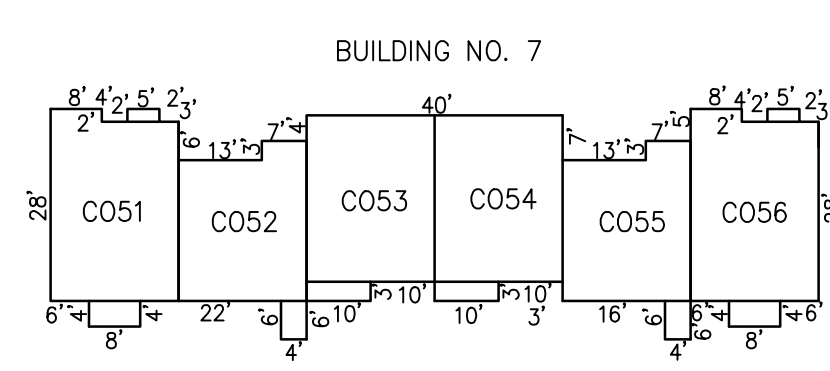
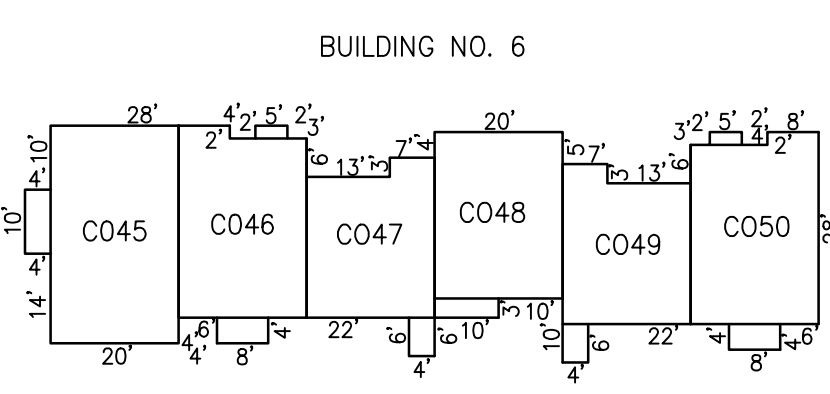
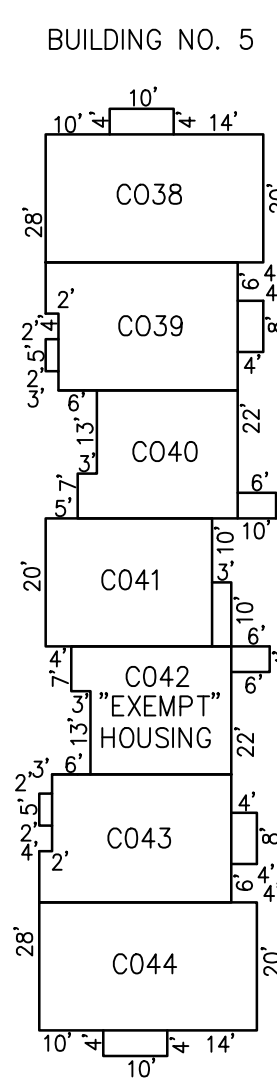
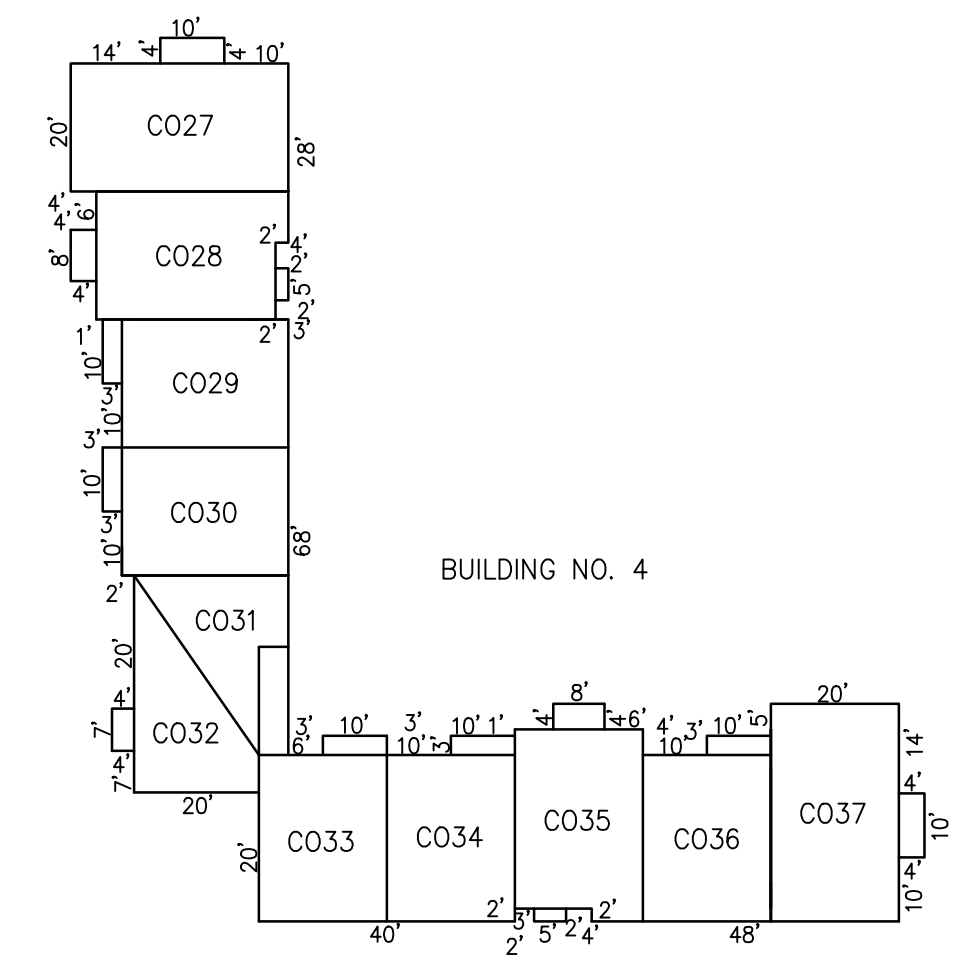
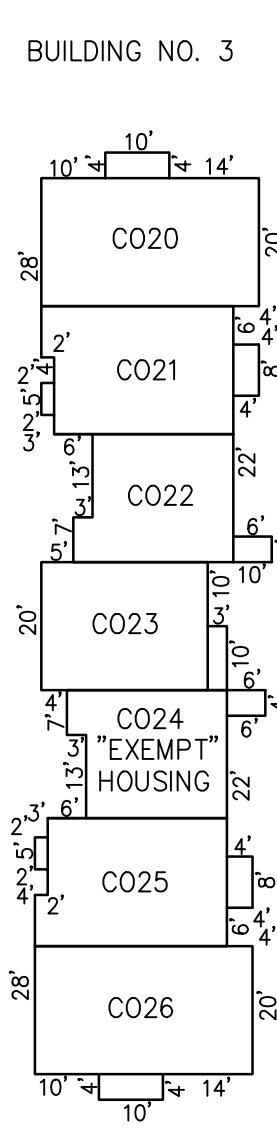
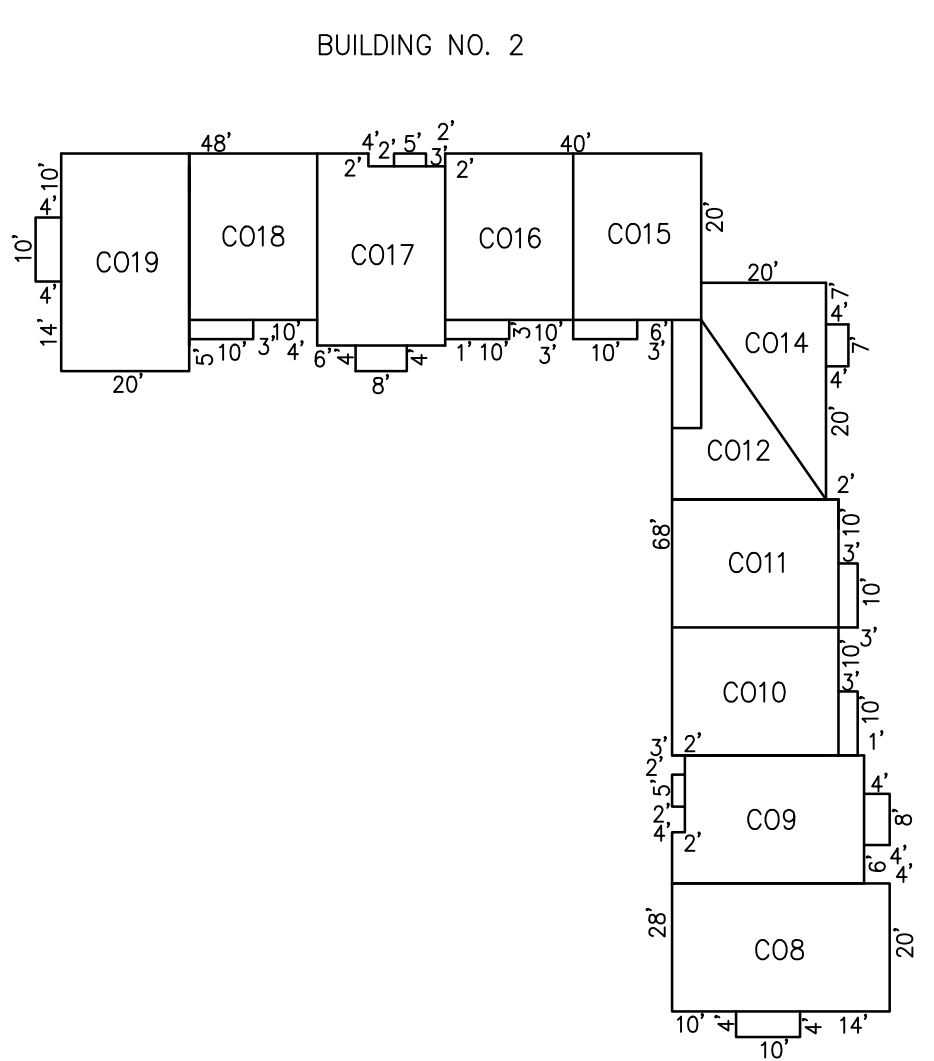
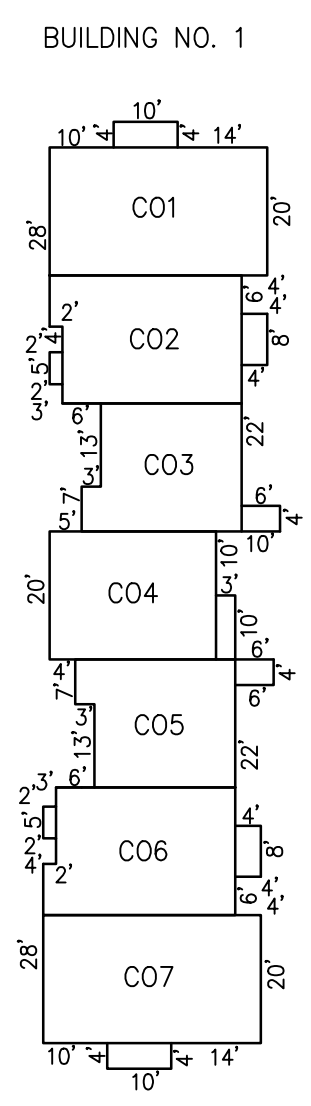


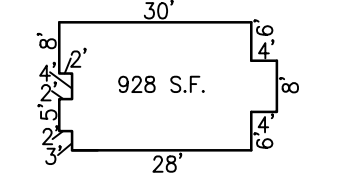
REVISIONS		
5-01-2009	CRAIG F. REMINGTON	23924
1-15-2019	CHARLES E. ADAMSON	42627

NOTE:
THIS SHEET HAS BEEN DRAWN USING COMPUTER AIDED DRAFTING/DESIGN (CAD/D) AND COORDINATE GEOMETRY (COGO).

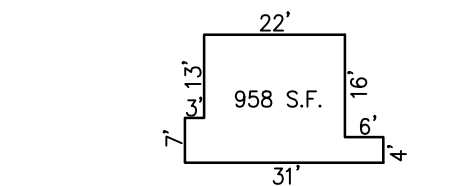
BLOCK 201, LOT 18



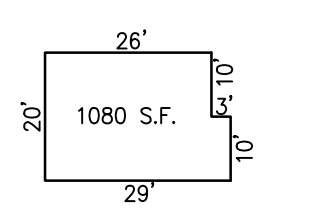
C01, C07, C08, C019, C020, C026, C027, C037, C038, C044 & C045



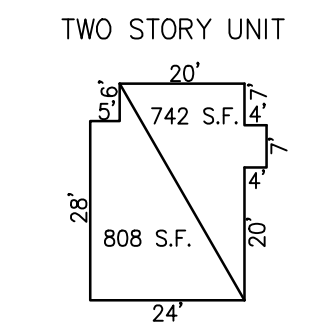
C02, C09, C017, C021, C023, C025, C028, C035, C039, C041, C043, C046, C050, C051 & C056



C03, C05, C047, C049, C052 & C055



C04, C010, C011, C015, C016, C018, C022, C024, C029, C030, C033, C034, C036, C042, C048, C053 & C054



C012, C014, C031 & C032

FOX RUN CONDOMINIUMS
INSET "A"
SCALE: 1"=30'

CONDOMINIUM DETAILS AND DIMENSIONS
BLOCK 201 LOT 18
SEE SHEET 18

THIS MAP HAS BEEN GIVEN A FORMAL CERTIFICATION BY THE DIVISION OF TAXATION ON NOVEMBER 16, 2007, SIGNED THOMAS J. REILLY, CHIEF, LOCAL PROPERTY, FIELD ASSISTANCE, SANTO C. DIDONATO, SUPERVISING FIELD REPRESENTATIVE, AND ASSIGNED SERIAL NUMBER 914.



TAX MAP
CITY OF PLEASANTVILLE

ATLANTIC COUNTY NEW JERSEY
SCALE: 1" = 30' DATE: 6-17-2003
CRAIG F. REMINGTON LAND SURVEYOR LIC. NO. 23924

24 GA 28048700
REMINGTON, VERNICK & WALBERG ENGINEERS
845 N. MAIN STREET, PLEASANTVILLE, N.J. 08232
(609) 645-700, FAX (609) 645-7076
WEB SITE ADDRESS: WWW.RVWE.COM