

TAX MAP CITY OF PLEASANTVILLE

ATLANTIC COUNTY NEW JERSEY
SCALE: 1" = 100' DATE: 6-17-2003

CRAIG F. REMINGTON LAND SURVEYOR LIC. NO. 23924



REMINGTON, VERNICK & WALBERG ENGINEERS
24 GA 28048700
845 N. MAIN STREET, PLEASANTVILLE, N.J. 08232
(609) 645-7100, FAX (609) 645-7076
WEB SITE ADDRESS: WWW.RVVE.COM

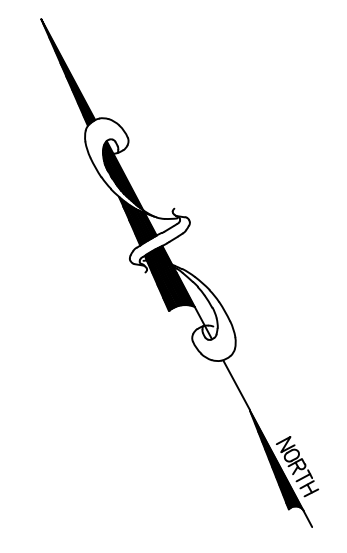
THIS MAP HAS BEEN GIVEN A FORMAL CERTIFICATION BY THE DIVISION OF TAXATION ON NOVEMBER 16, 2007, SIGNED THOMAS J. REILLY, CHIEF, LOCAL PROPERTY, FIELD ASSISTANCE, SANTO C. DIDONATO, SUPERVISING FIELD REPRESENTATIVE, AND ASSIGNED SERIAL NUMBER 914.

CITY OF ABSECON
COUNTY OF ATLANTIC

(COUNTY ROUTE NO. 663)
BOUNDARY

NOTE:
THIS SHEET HAS BEEN DRAWN USING COMPUTER AIDED DRAFTING/DESIGN (CADD) AND COORDINATE GEOMETRY (COGO).

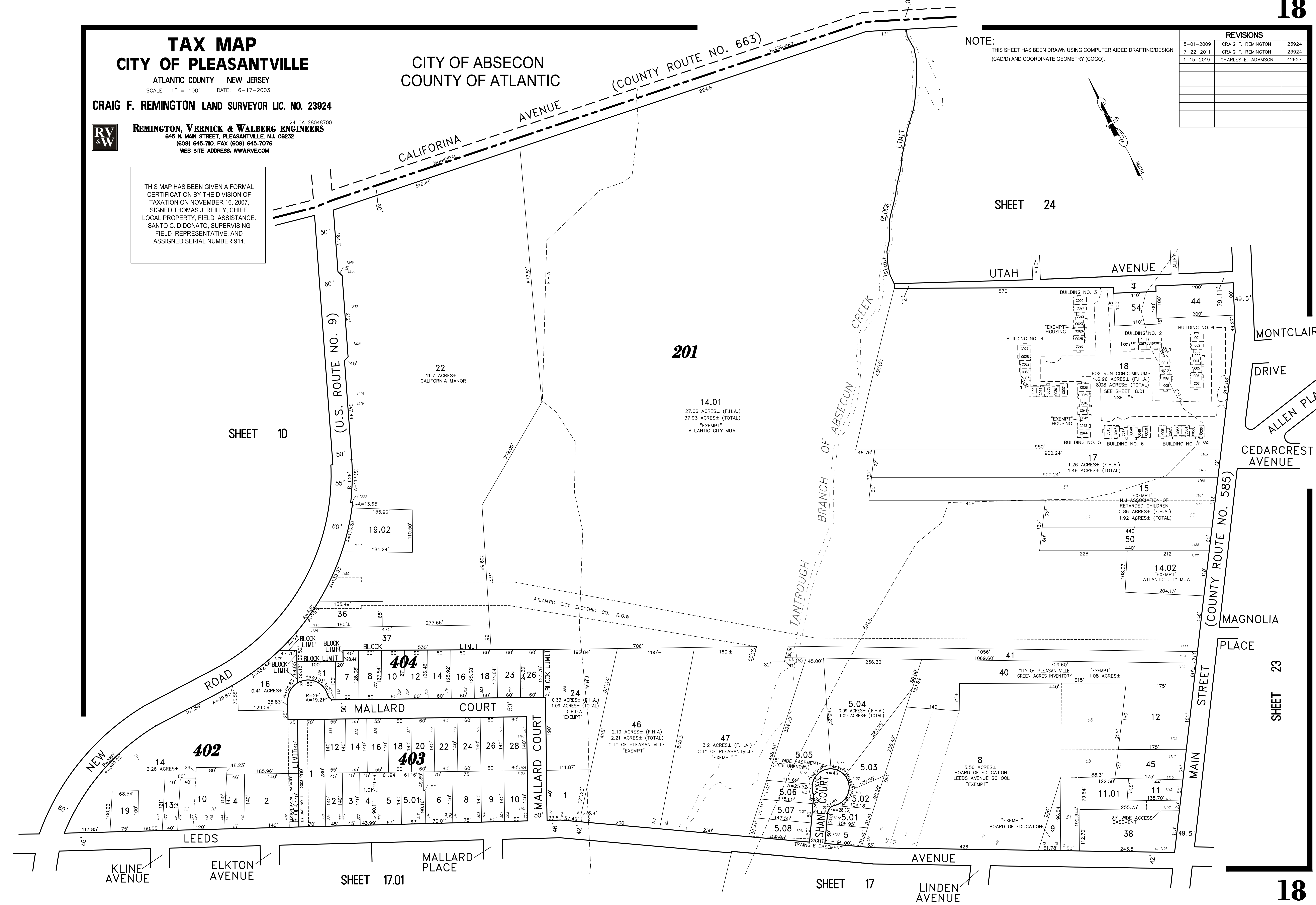
REVISIONS		
5-01-2009	CRAIG F. REMINGTON	23924
7-22-2011	CRAIG F. REMINGTON	23924
1-15-2019	CHARLES E. ADAMSON	42627



SHEET 24

SHEET 10

SHEET 23



201

14.01
27.06 ACRES± (F.H.A.)
37.93 ACRES± (TOTAL)
"EXEMPT"
ATLANTIC CITY MUA

22
11.7 ACRES±
CALIFORNIA MANOR

19.02
110.50'
184.24'

36
180'±
277.66'

16
0.41 ACRES±
129.09'

14
2.26 ACRES±

19
100'
75'

10
121'
131'

4
140'

2
140'

SHEET 17.01

SHEET 17