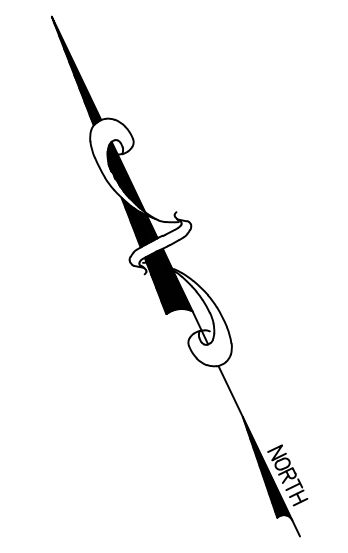


REVISIONS		
5-01-2009	CRAIG F. REMINGTON	23924
6-14-2017	CHARLES E. ADAMSON	42627
10-9-2018	CHARLES E. ADAMSON	42627
1-15-2019	CHARLES E. ADAMSON	42627

NOTE:  
THIS SHEET HAS BEEN DRAWN USING COMPUTER AIDED DRAFTING/DESIGN (CAD/D) AND COORDINATE GEOMETRY (COGO).

SHEET 14.01

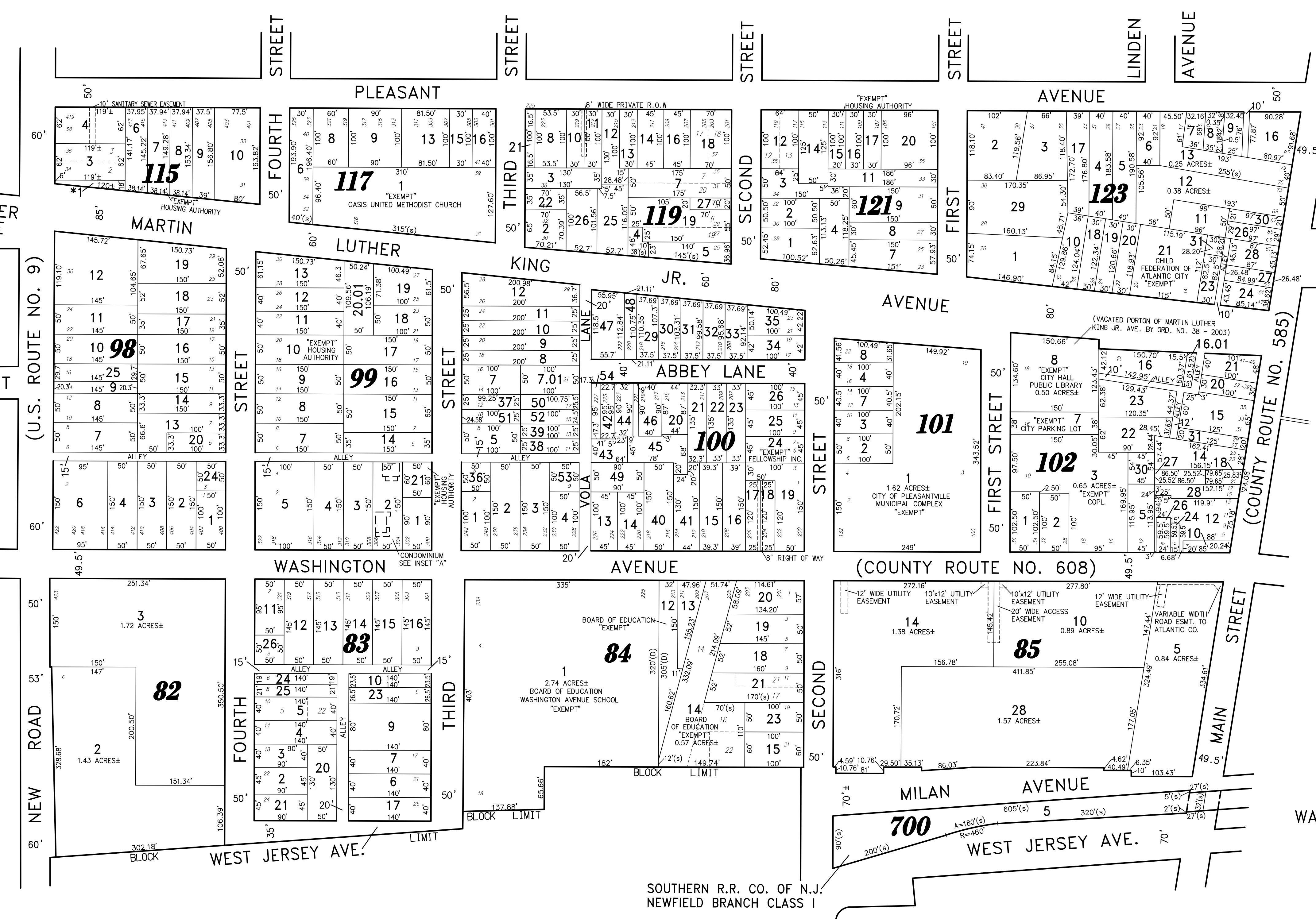


SHEET 5.01

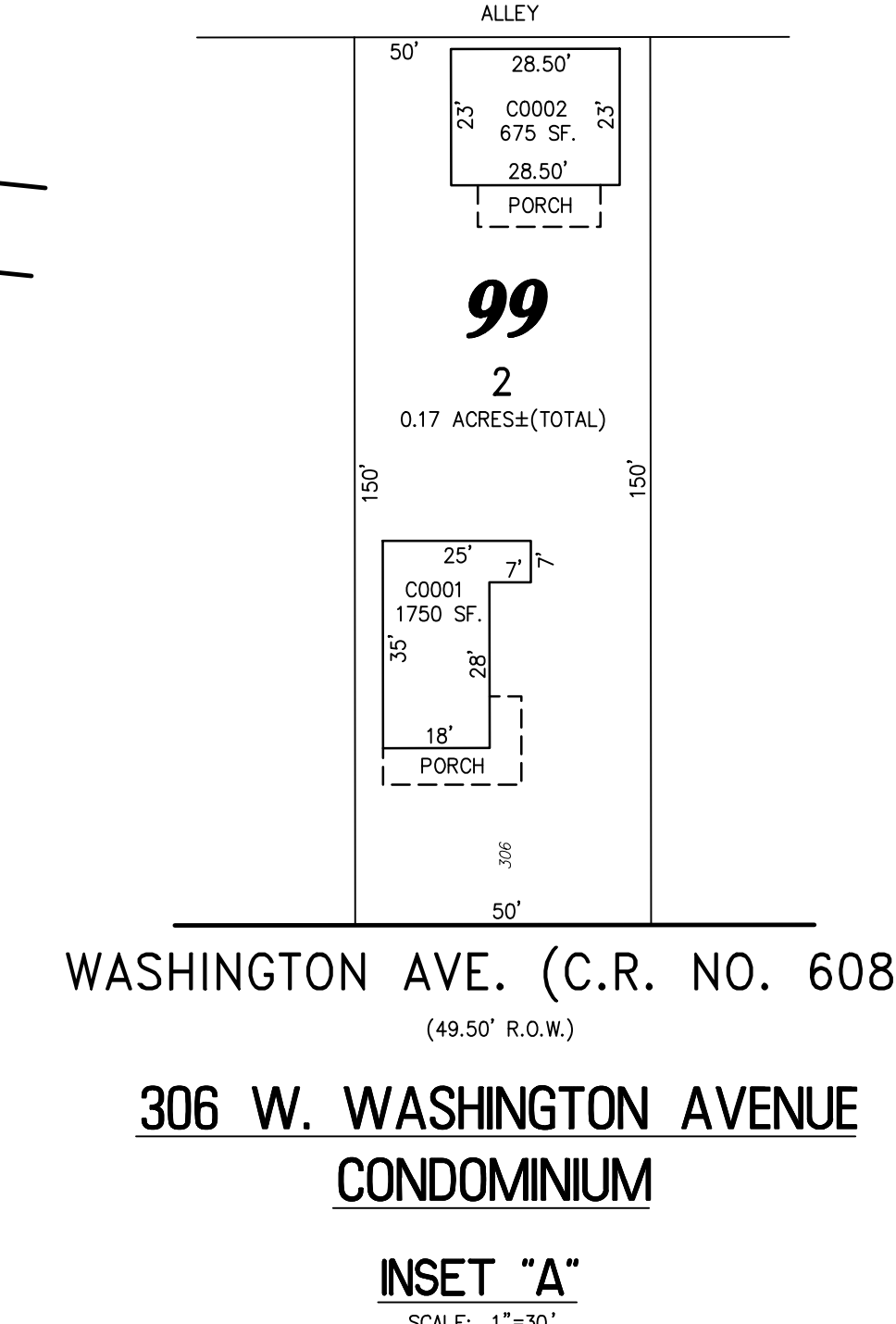
MARTIN LUTHER KING JR. AVE

BRAD STREET

SHEET 4



SHEET 14.02



SHEET 13

\*NOTE: "EXEMPT" CITY OF PLEASANTVILLE - TEMPORARY PROPERTY FORECLOSURE

THIS MAP HAS BEEN GIVEN A FORMAL CERTIFICATION BY THE DIVISION OF TAXATION ON NOVEMBER 16, 2007, SIGNED THOMAS J. REILLY, CHIEF, LOCAL PROPERTY, FIELD ASSISTANCE. SANTO C. DIDONATO, SUPERVISING FIELD REPRESENTATIVE, AND ASSIGNED SERIAL NUMBER 914.

**TAX MAP**  
**CITY OF PLEASANTVILLE**

ATLANTIC COUNTY NEW JERSEY  
SCALE: 1" = 100' DATE: 9-17-1999

CRAIG F. REMINGTON LAND SURVEYOR LIC. NO. 23924



REMINGTON, VERNICK & WALBERG ENGINEERS  
24 GA 2804700  
845 N. MAIN STREET, PLEASANTVILLE, NJ 08232  
(609) 645-7100, FAX (609) 645-7076  
WEB SITE ADDRESS: WWW.RVW.COM