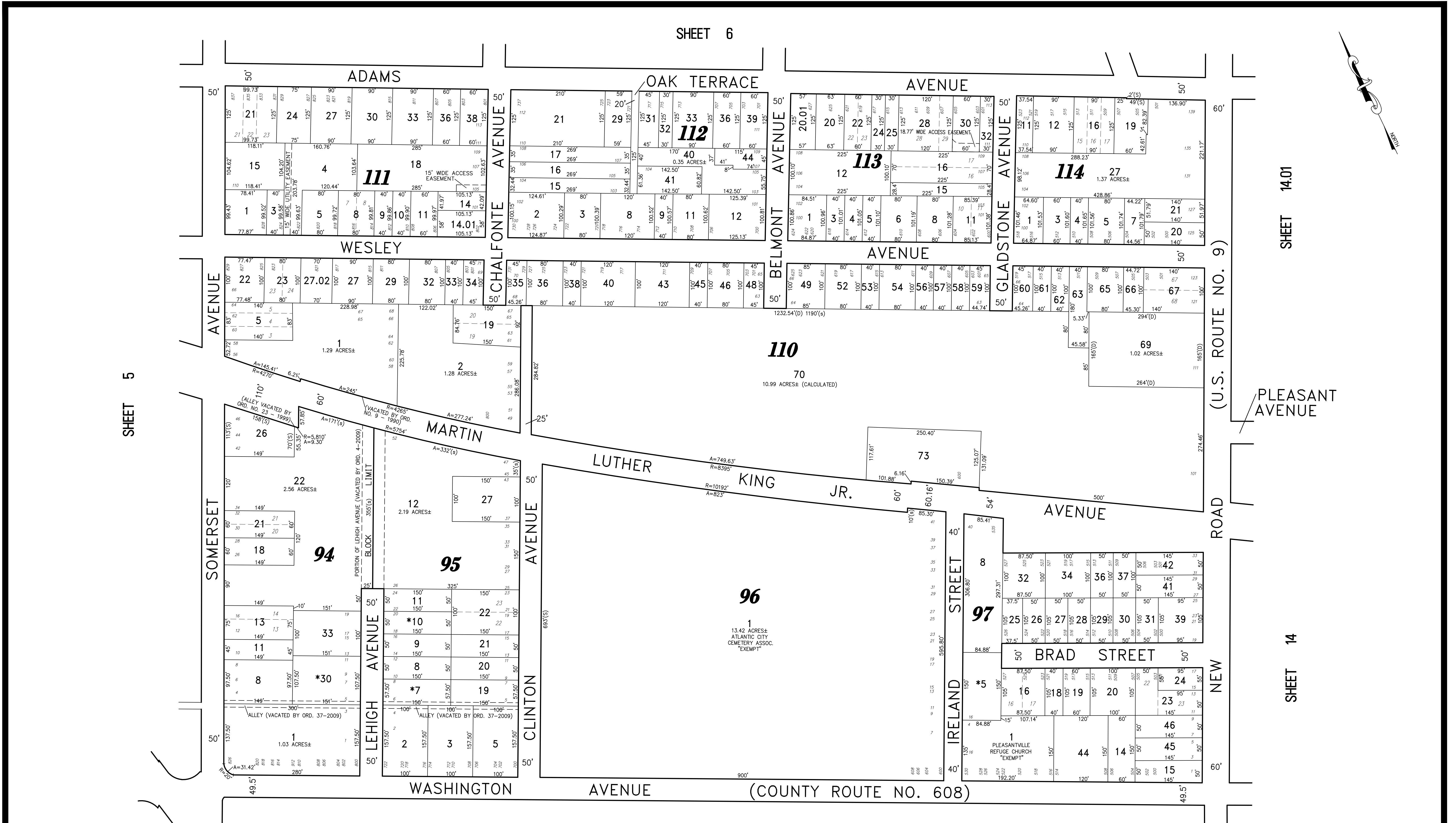


SHEET 5

SHEET 14.01

SHEET 14



*NOTE: "EXEMPT" CITY OF PLEASANTVILLE - TEMPORARY PROPERTY FORECLOSURE

TAX MAP CITY OF PLEASANTVILLE

ATLANTIC COUNTY NEW JERSEY
SCALE: 1" = 100' DATE: 6-17-2003

CRAIG F. REMINGTON LAND SURVEYOR LIC. NO. 23924



REMINGTON, VERNICK & WALBERG ENGINEERS
845 N. MAIN STREET, PLEASANTVILLE, N.J. 08232
(609) 645-7100, FAX (609) 645-7076
WEB SITE ADDRESS: WWW.RVW.COM

THIS MAP HAS BEEN GIVEN A FORMAL CERTIFICATION BY THE DIVISION OF TAXATION ON NOVEMBER 16, 2007, SIGNED THOMAS J. REILLY, CHIEF, LOCAL PROPERTY, FIELD ASSISTANCE. SANTO C. DIDONATO, SUPERVISING FIELD REPRESENTATIVE, AND ASSIGNED SERIAL NUMBER 914.

| REVISIONS | | |
|-----------|--------------------|-------|
| 5-01-2009 | CRAIG F. REMINGTON | 23924 |
| 7-22-2011 | CRAIG F. REMINGTON | 23924 |
| 10-9-2018 | CHARLES E. ADAMSON | 42627 |
| 1-15-2019 | CHARLES E. ADAMSON | 42627 |
| | | |
| | | |
| | | |
| | | |
| | | |

NOTE:
THIS SHEET HAS BEEN DRAWN USING COMPUTER AIDED DRAFTING/DESIGN (CAD/D) AND COORDINATE GEOMETRY (COGO).