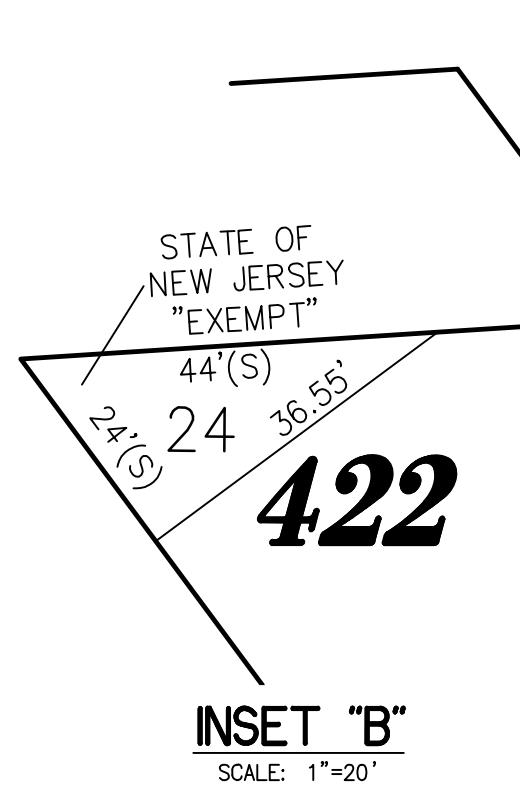
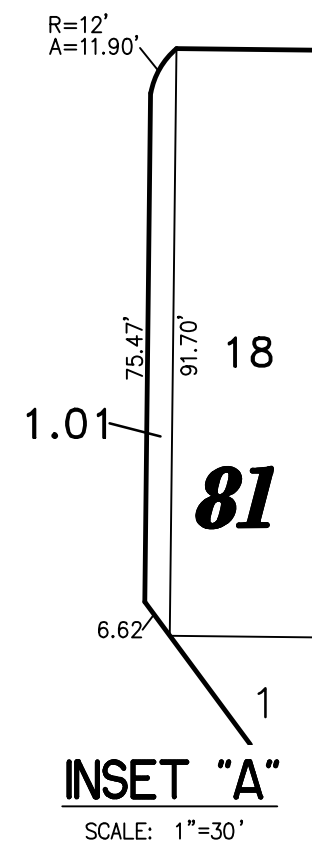
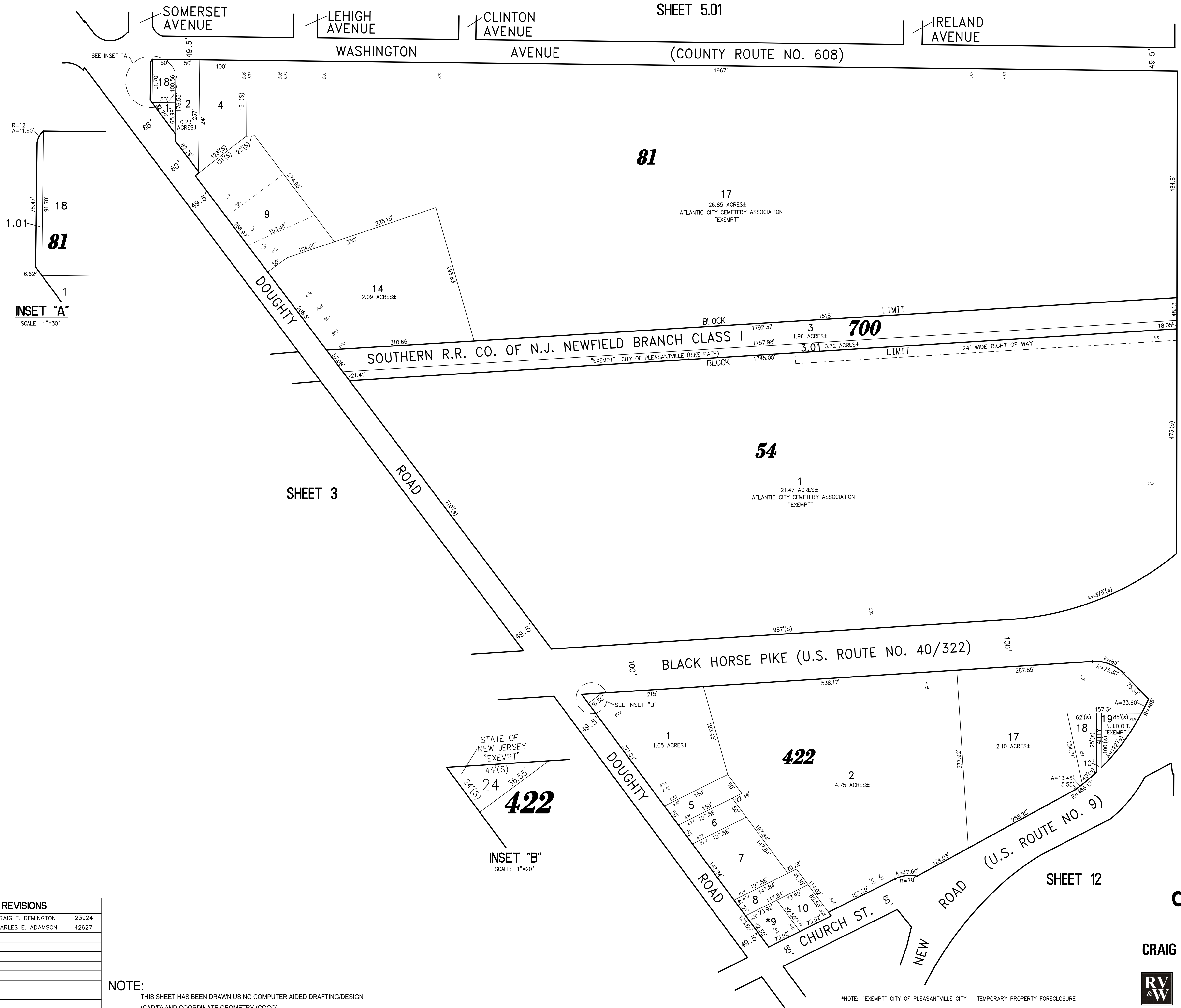


SHEET 5.01



SHEET 14

SHEET 13

SHEET 3

SHEET 12

THIS MAP HAS BEEN GIVEN A FORMAL CERTIFICATION BY THE DIVISION OF TAXATION ON NOVEMBER 16, 2007, SIGNED THOMAS J. REILLY, CHIEF, LOCAL PROPERTY, FIELD ASSISTANCE. SANTO C. DIDONATO, SUPERVISING FIELD REPRESENTATIVE, AND ASSIGNED SERIAL NUMBER 914.

**TAX MAP**  
**CITY OF PLEASANTVILLE**

ATLANTIC COUNTY NEW JERSEY  
SCALE: 1" = 100' DATE: 6-17-2003

CRAIG F. REMINGTON LAND SURVEYOR LIC. NO. 23924

**REMINGTON, VERNICK & WALBERG ENGINEERS**  
24 GA 28048700  
845 N. MAIN STREET, PLEASANTVILLE, N.J. 08232  
(609) 645-700, FAX (609) 645-7076  
WEB SITE ADDRESS: WWW.RVW.COM



REVISIONS		
5-01-2009	CRAIG F. REMINGTON	23924
1-15-2019	CHARLES E. ADAMSON	42627

**NOTE:**  
THIS SHEET HAS BEEN DRAWN USING COMPUTER AIDED DRAFTING/DESIGN (CAD/D) AND COORDINATE GEOMETRY (COGO).

\*NOTE: "EXEMPT" CITY OF PLEASANTVILLE CITY - TEMPORARY PROPERTY FORECLOSURE