

TOWNSHIP OF EGG HARBOR
COUNTY OF ATLANTIC

WASHINGTON AVENUE (COUNTY ROUTE NO. 608)

REVISIONS		
5-01-2009	CRAIG F. REMINGTON	23924
1-15-2019	CHARLES E. ADAMSON	42627

THIS MAP HAS BEEN GIVEN A FORMAL CERTIFICATION BY THE DIVISION OF TAXATION ON NOVEMBER 16, 2007, SIGNED THOMAS J. REILLY, CHIEF, LOCAL PROPERTY, FIELD ASSISTANCE. SANTO C. DIDONATO, SUPERVISING FIELD REPRESENTATIVE, AND ASSIGNED SERIAL NUMBER 914.

TAX MAP

CITY OF PLEASANTVILLE

ATLANTIC COUNTY NEW JERSEY
SCALE: 1" = 100' DATE: 6-17-2003

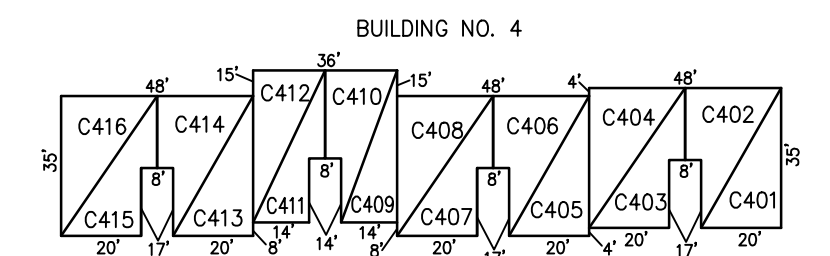
CRAIG F. REMINGTON LAND SURVEYOR LIC. NO. 23924



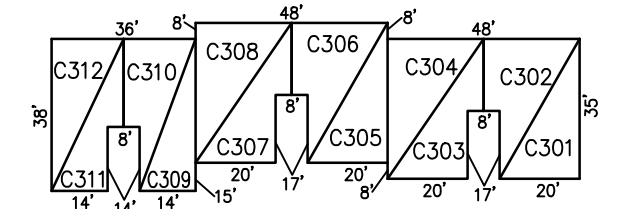
REMINGTON, VERNICK & WALBERG ENGINEERS
24 GA 28048700
845 N. MAIN STREET, PLEASANTVILLE, N.J. 08232
(609) 645-7100, FAX (609) 645-7076
WEB SITE ADDRESS: WWW.RVE.COM

*NOTE: "EXEMPT" CITY OF PLEASANTVILLE - TEMPORARY PROPERTY FORECLOSURE

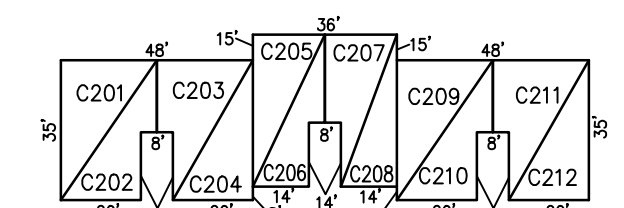
BLOCK 429, LOT 11



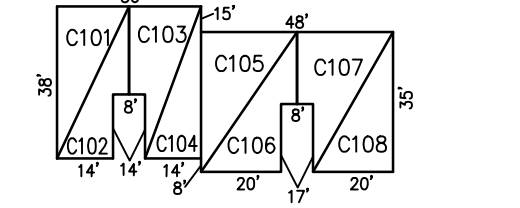
BUILDING NO. 3



BUILDING NO. 2



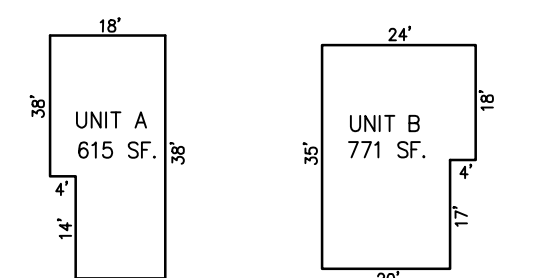
BUILDING NO. 1



DETAILS

SCALE: 1"=40'

BLOCK 429, LOT 11



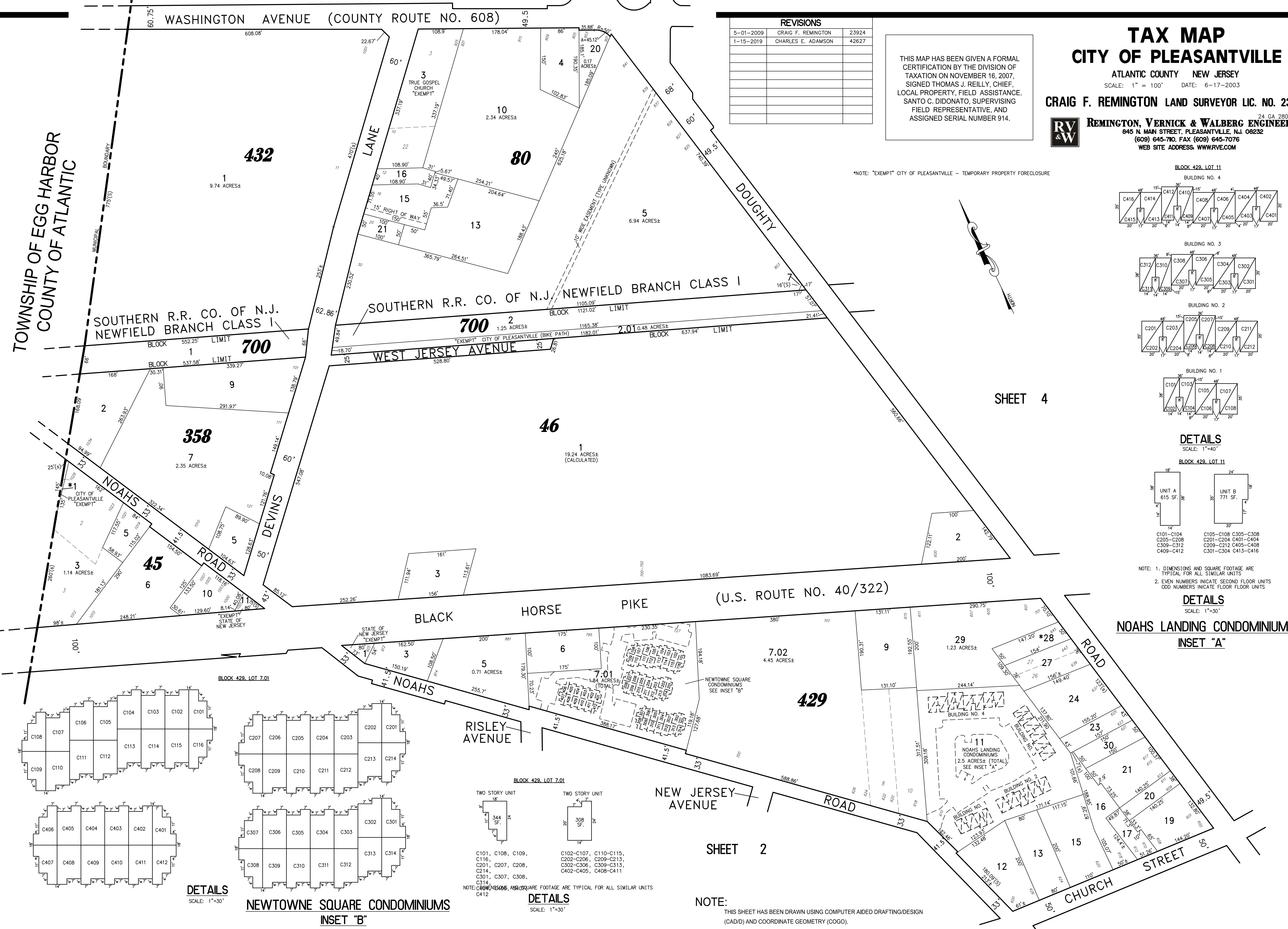
C101-C104 C105-C108 C305-C308
C205-C208 C209-C212 C401-C404
C309-C312 C405-C408
C409-C412 C301-C304 C413-C416

NOTE: 1. DIMENSIONS AND SQUARE FOOTAGE ARE TYPICAL FOR ALL SIMILAR UNITS
2. EVEN NUMBERS INDICATE SECOND FLOOR UNITS
ODD NUMBERS INDICATE FIRST FLOOR UNITS

DETAILS

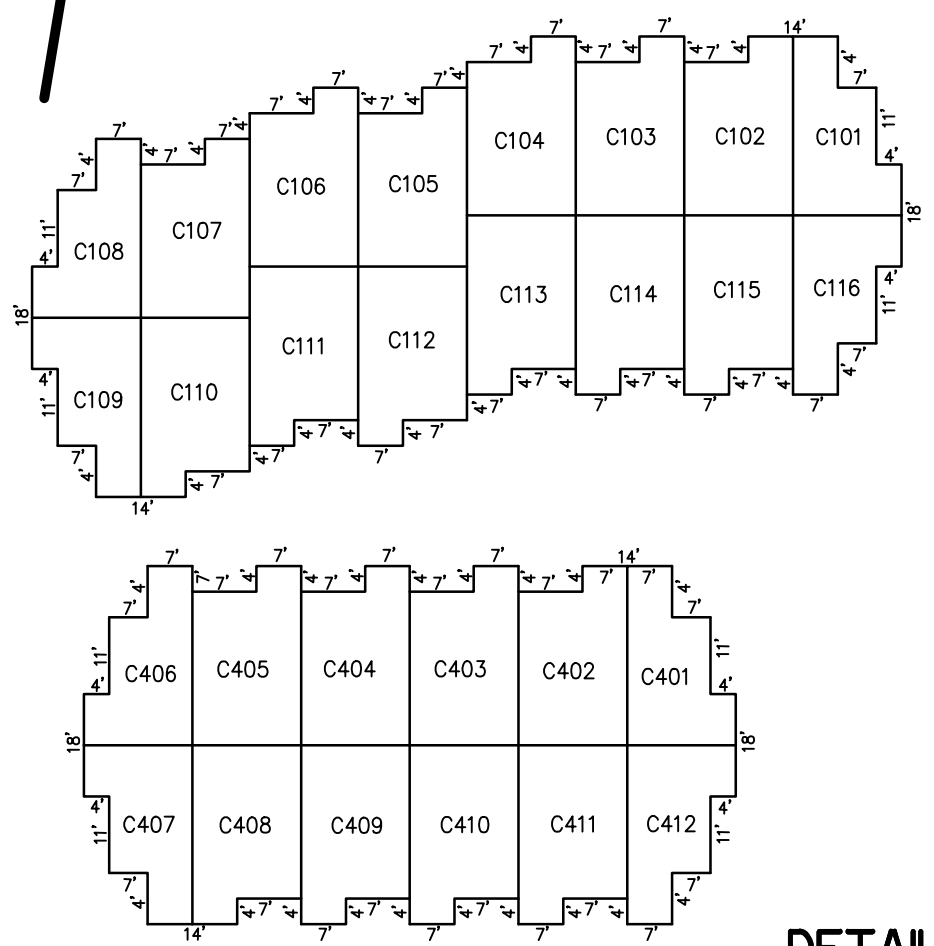
SCALE: 1"=30'

NOAHS LANDING CONDOMINIUMS INSET "A"

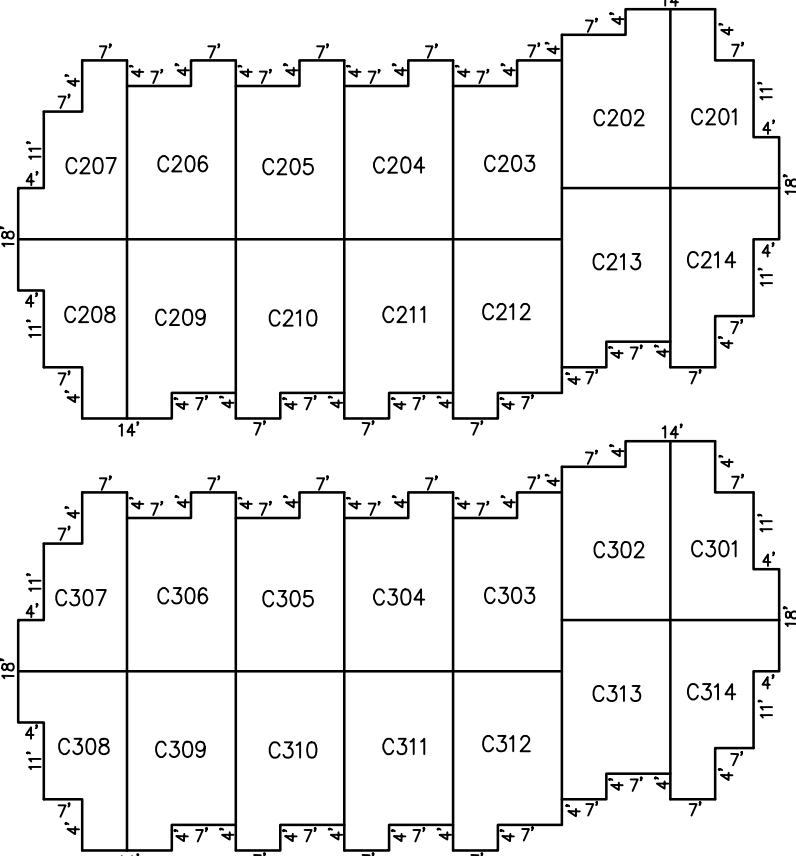


SHEET 4

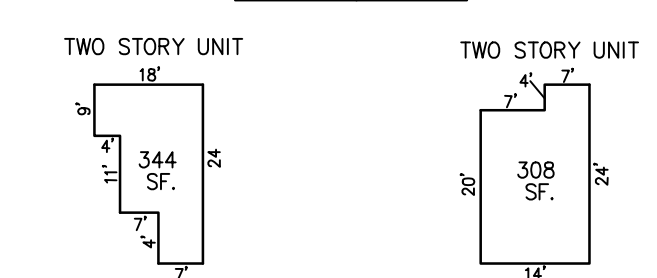
SHEET 2



DETAILS
SCALE: 1"=30'



NEWTOWNE SQUARE CONDOMINIUMS
INSET "B"



DETAILS
SCALE: 1"=30'

C101, C108, C109, C116, C201, C207, C208, C214, C301, C307, C308, C314, C412

C102-C107, C110-C115, C202-C206, C209-C213, C302-C306, C309-C313, C402-C405, C408-C411

NOTE: DIMENSIONS AND SQUARE FOOTAGE ARE TYPICAL FOR ALL SIMILAR UNITS

NOTE: THIS SHEET HAS BEEN DRAWN USING COMPUTER AIDED DRAFTING/DESIGN (CAD/D) AND COORDINATE GEOMETRY (COGO).