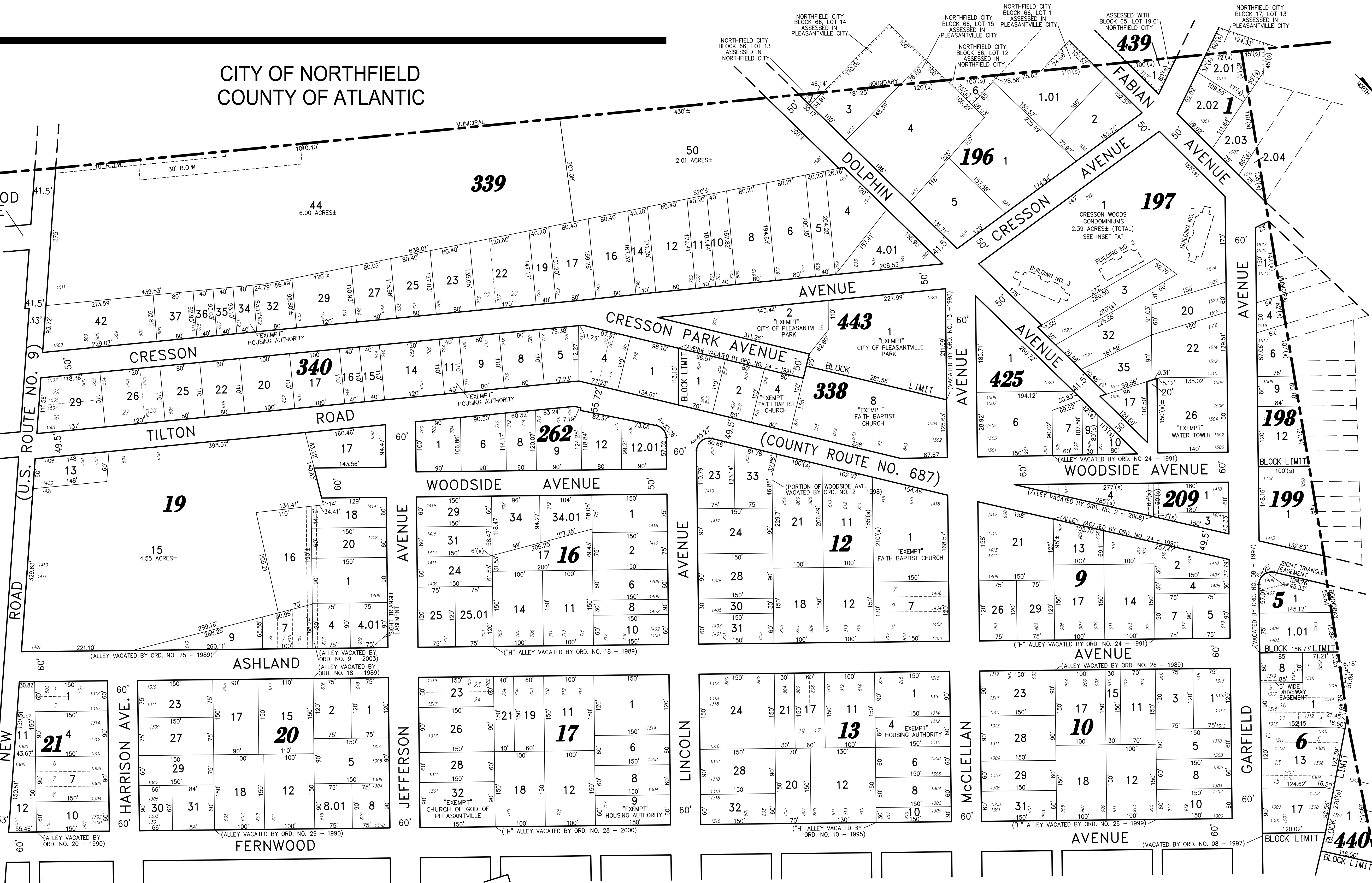


CITY OF NORTHFIELD
COUNTY OF ATLANTIC

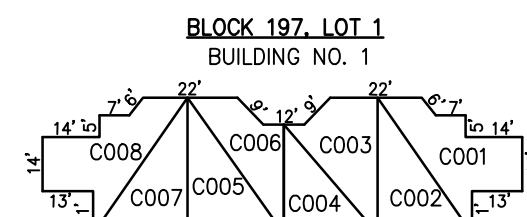
RIDGEWOOD AVENUE

SHEET 11

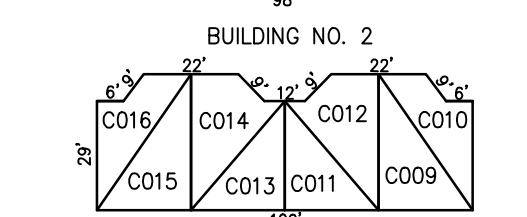


REVISIONS		
5-01-2009	CRAIG F. REMINGTON	23924
7-22-2011	CRAIG F. REMINGTON	23924
10-9-2018	CHARLES E. ADAMSON	42627
1-15-2019	CHARLES E. ADAMSON	42627

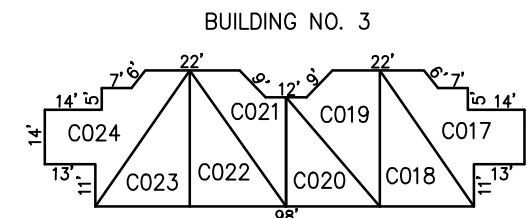
NOTE:
THIS SHEET HAS BEEN DRAWN USING COMPUTER AIDED DRAFTING/DESIGN (CAD/D) AND COORDINATE GEOMETRY (COGO).



BLOCK 197, LOT 1



LOTS C003, C004, C005, C006, C009, C010, C011, C012, C013, C014, C015, C016, C019, C020, C021, C022



NOTE: 1. DIMENSIONS AND SQUARE FOOTAGE ARE TYPICAL FOR ALL SIMILAR UNITS

CRESSON WOODS CONDOMINIUMS

INSET "A"
SCALE: 1"=30'

SHEET 101

THIS MAP HAS BEEN GIVEN A FORMAL CERTIFICATION BY THE DIVISION OF TAXATION ON NOVEMBER 16, 2007, SIGNED THOMAS J. REILLY, CHIEF, LOCAL PROPERTY, FIELD ASSISTANCE, SANTO C. DIDONATO, SUPERVISING FIELD REPRESENTATIVE, AND ASSIGNED SERIAL NUMBER 914.



REMINGTON, VERNICK & WALBERG ENGINEERS
845 N. MAIN STREET, PLEASANTVILLE, NJ 08232
(609) 645-7700, FAX (609) 645-7076
WEB SITE ADDRESS: WWW.RVW.COM

*NOTE: "EXEMPT" CITY OF PLEASANTVILLE - TEMPORARY PROPERTY FORECLOSURE

TAX MAP
CITY OF PLEASANTVILLE

ATLANTIC COUNTY NEW JERSEY
SCALE: 1" = 100' DATE: 6-17-2003

CRAIG F. REMINGTON LAND SURVEYOR LIC. NO. 23924

TOWNSHIP OF EGG HARBOR
COUNTY OF ATLANTIC