

REVISIONS			
DATE	BY	LIC. No.	COMMENTS

SHEET 17

DOLPHIN AVENUE

VIRGINIA AVENUE

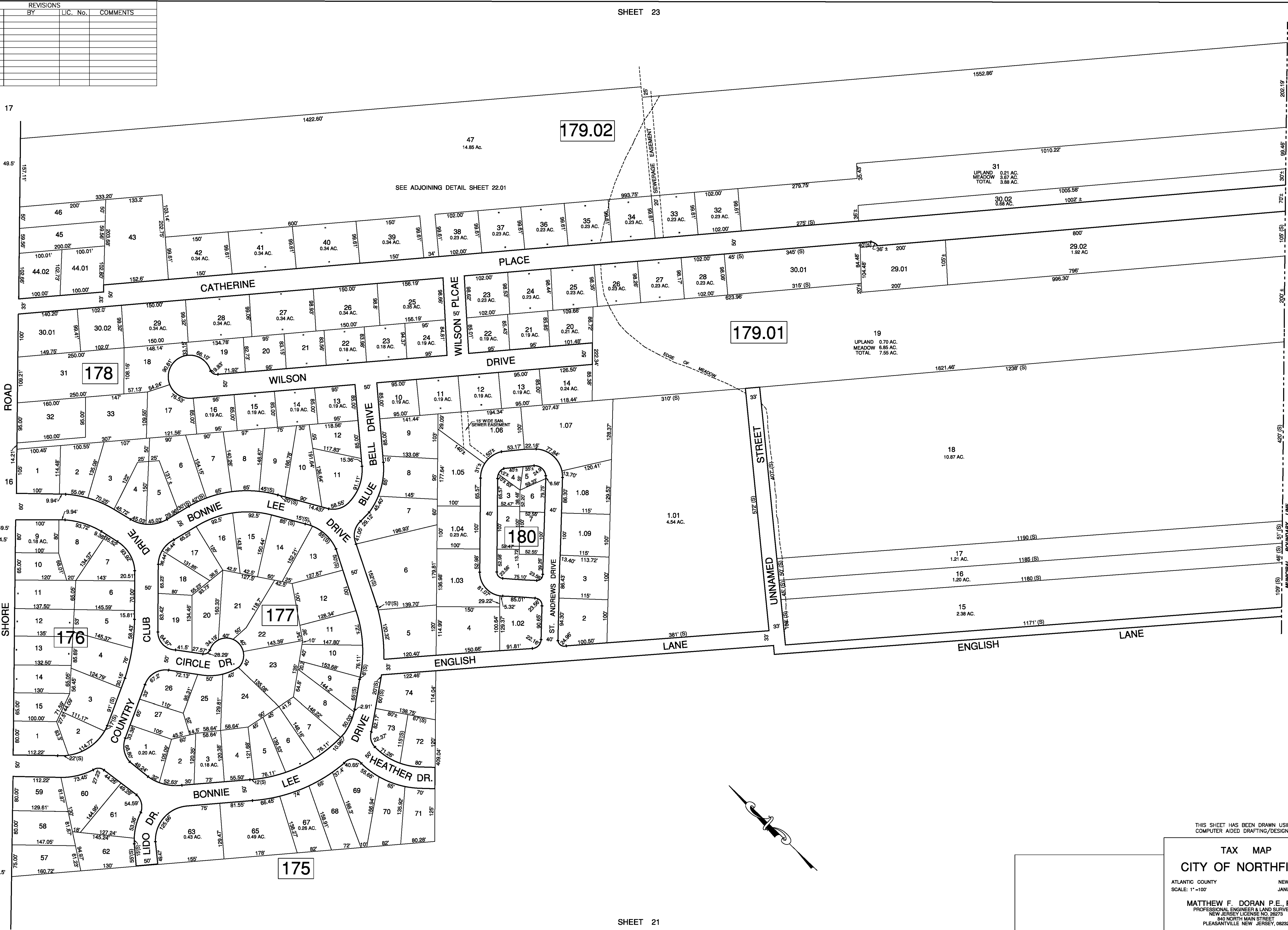
FRANKLIN AVENUE

SHEET 16

HADDON AVENUE

HADDON GREEN AVENUE

FAIRWAY AVENUE



TOWNSHIP OF EGG HARBOR

THIS SHEET HAS BEEN DRAWN USING  
COMPUTER AIDED DRAFTING/DESIGN (CAD/D)

**TAX MAP**  
**CITY OF NORTHFIELD**

ATLANTIC COUNTY NEW JERSEY  
SCALE: 1"=100' JANUARY 2009

**MATTHEW F. DORAN P.E., P.L.S.**  
PROFESSIONAL ENGINEER & LAND SURVEYOR  
NEW JERSEY LICENSE NO. 28273  
940 NORTH MAIN STREET  
PLEASANTVILLE, NEW JERSEY 08222  
TO SHOW CONDITIONS OF JANUARY 1, 2009