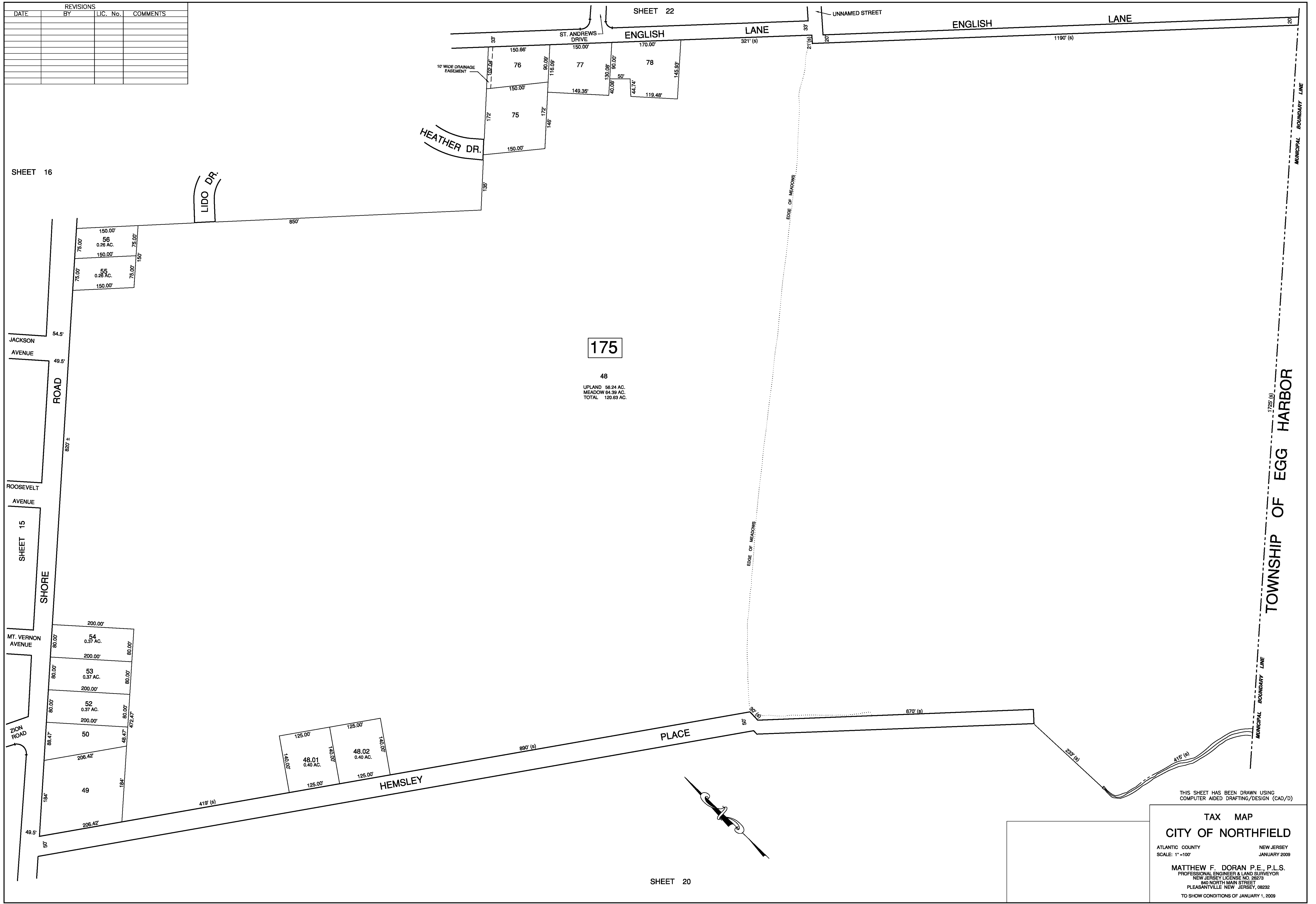


REVISIONS			
DATE	BY	LIC. No.	COMMENTS



175

48
 UPLAND 56.24 AC.
 MEADOW 64.39 AC.
 TOTAL 120.63 AC.

49.01
 0.40 AC.
 48.02
 0.40 AC.

THIS SHEET HAS BEEN DRAWN USING
 COMPUTER AIDED DRAFTING/DESIGN (CAD/D)

TAX MAP
CITY OF NORTHFIELD
 ATLANTIC COUNTY NEW JERSEY
 SCALE: 1" = 100' JANUARY 2009

MATTHEW F. DORAN P.E., P.L.S.
 PROFESSIONAL ENGINEER & LAND SURVEYOR
 NEW JERSEY LICENSE NO. 26273
 840 NORTH MAIN STREET
 PLEASANTVILLE, NEW JERSEY, 08232
 TO SHOW CONDITIONS OF JANUARY 1, 2009