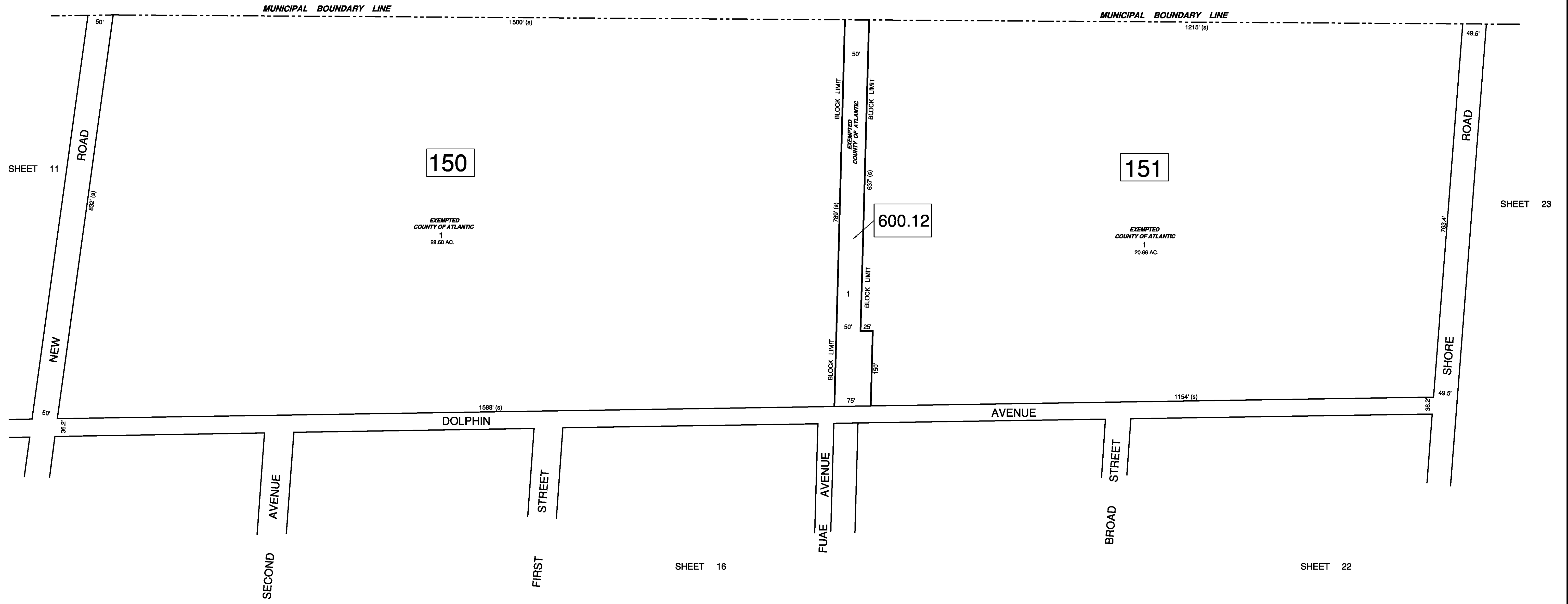


CITY OF PLEASANTVILLE



SHEET 11

SHEET 23

SHEET 16

SHEET 22

| REVISIONS | | | |
|-----------|----|----------|----------|
| DATE | BY | LIC. No. | COMMENTS |
| | | | |
| | | | |
| | | | |
| | | | |
| | | | |
| | | | |
| | | | |
| | | | |
| | | | |
| | | | |

THIS SHEET HAS BEEN DRAWN USING
COMPUTER AIDED DRAFTING/DESIGN (CAD/D)

TAX MAP
CITY OF NORTHFIELD

ATLANTIC COUNTY
SCALE: 1" = 100'

NEW JERSEY
JANUARY 2009

MATTHEW F. DORAN P.E., P.L.S.
PROFESSIONAL ENGINEER & LAND SURVEYOR
NEW JERSEY LICENSE NO. 296273
840 NORTH MAIN STREET
PLEASANTVILLE NEW JERSEY, 08232
TO SHOW CONDITIONS OF JANUARY 1, 2009