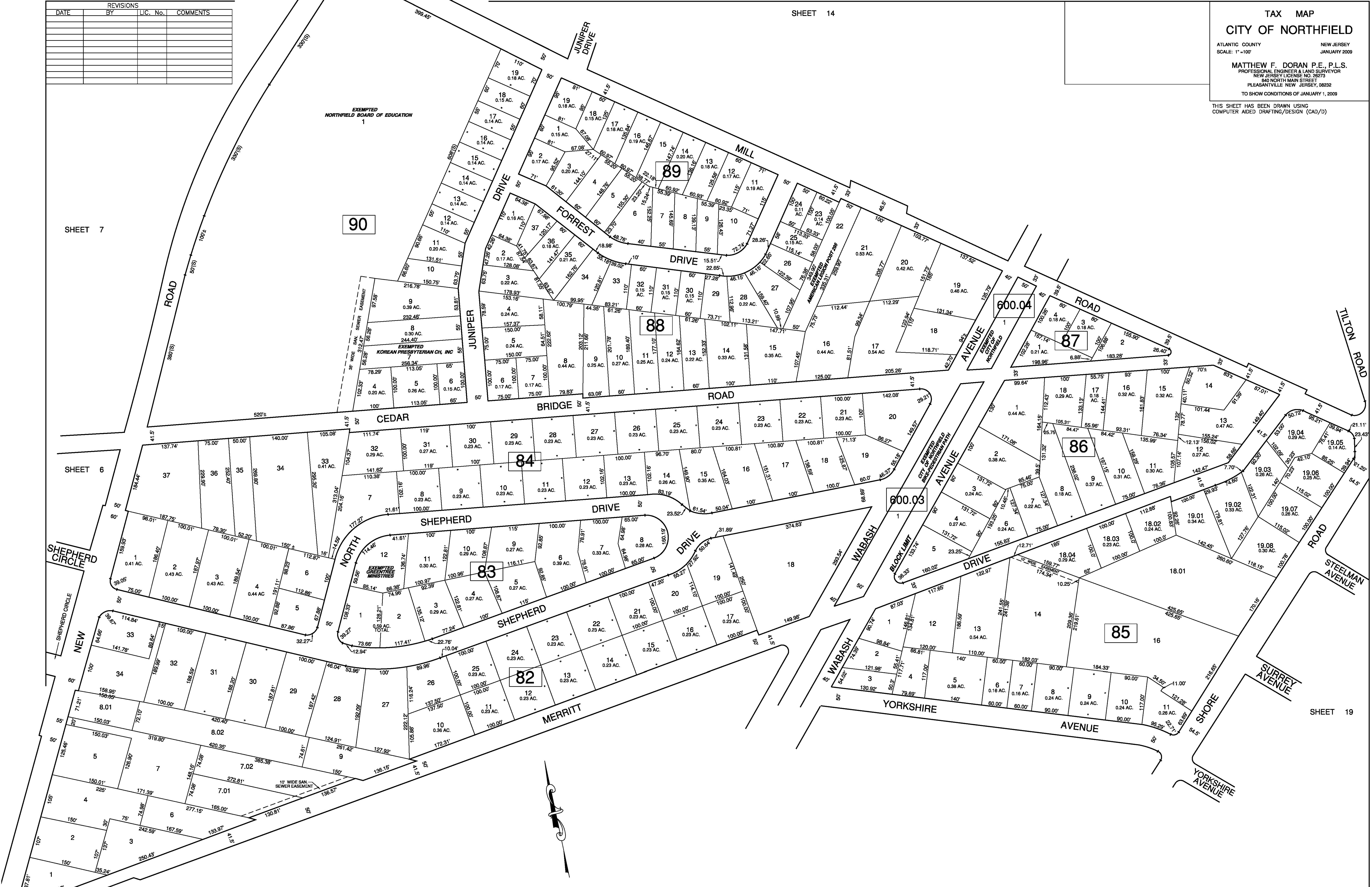


REVISIONS			
DATE	BY	LIC. No.	COMMENTS

TAX MAP
CITY OF NORTHFIELD
 ATLANTIC COUNTY NEW JERSEY
 SCALE: 1" = 100' JANUARY 2009
MATTHEW F. DORAN P.E., P.L.S.
 PROFESSIONAL ENGINEER & LAND SURVEYOR
 NEW JERSEY LICENSE NO. 28273
 840 NORTH MAIN STREET
 PLEASANTVILLE, NEW JERSEY, 08232
 TO SHOW CONDITIONS OF JANUARY 1, 2009

THIS SHEET HAS BEEN DRAWN USING
 COMPUTER AIDED DRAFTING/DESIGN (CAD/D)



SHEET 7

SHEET 6