

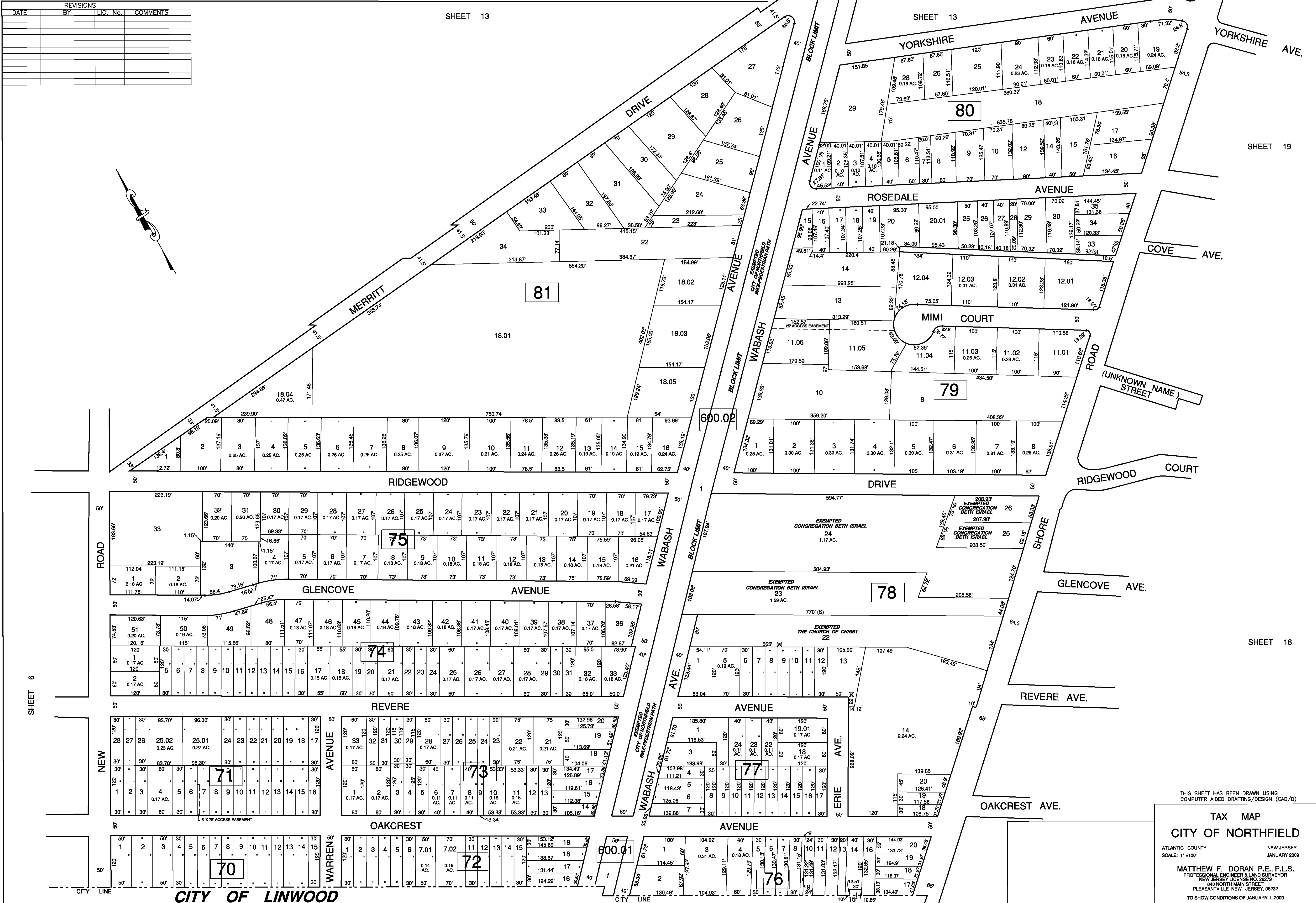
REVISIONS			
DATE	BY	LIC. No.	COMMENTS

SHEET 13

SHEET 13

SHEET 19

SHEET 18



THIS SHEET HAS BEEN DRAWN USING COMPUTER AIDED DRAFTING/DESIGN (CAD/D)

**TAX MAP**  
**CITY OF NORTHFIELD**  
 ATLANTIC COUNTY NEW JERSEY  
 SCALE: 1"=100' JANUARY 2009  
 MATTHEW F. DORAN P.E., P.L.S.  
 PROFESSIONAL ENGINEER & LAND SURVEYOR  
 NEW JERSEY LICENSE NO. 28273  
 840 NORTH MAIN STREET  
 PLEASANTVILLE NEW JERSEY 08232  
 TO SHOW CONDITIONS OF JANUARY 1, 2009