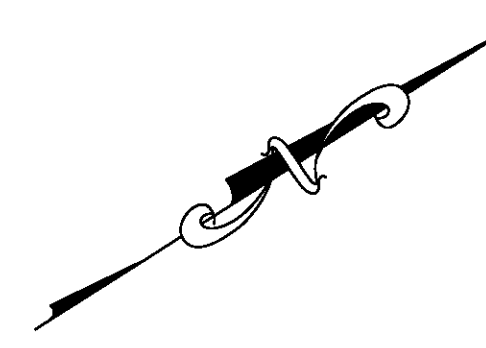


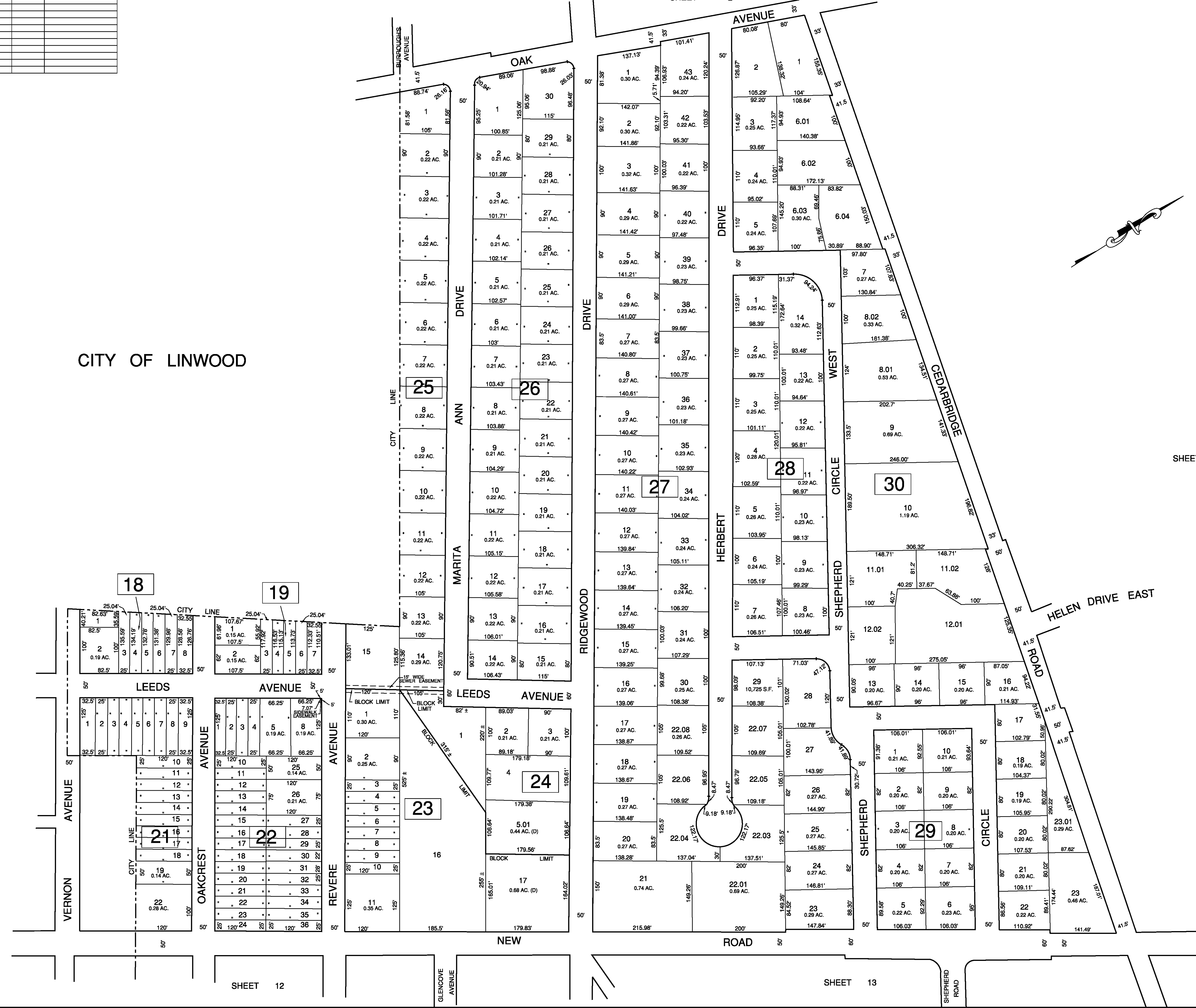
| REVISIONS | | | |
|-----------|----|----------|----------|
| DATE | BY | LIC. No. | COMMENTS |
| | | | |
| | | | |
| | | | |
| | | | |
| | | | |
| | | | |
| | | | |
| | | | |
| | | | |
| | | | |

SHEET 2

CITY OF LINWOOD



SHEET 7



THIS SHEET HAS BEEN DRAWN USING
COMPUTER AIDED DRAFTING/DESIGN (CAD/D)

TAX MAP
CITY OF NORTHFIELD

ATLANTIC COUNTY NEW JERSEY
SCALE: 1"=100' JANUARY 2009

MATTHEW F. DORAN P.E., P.L.S.
PROFESSIONAL ENGINEER & LAND SURVEYOR
NEW JERSEY LICENSE NO. 26273
840 NORTH MAIN STREET
PLEASANTVILLE NEW JERSEY 08232
TO SHOW CONDITIONS OF JANUARY 1, 2009