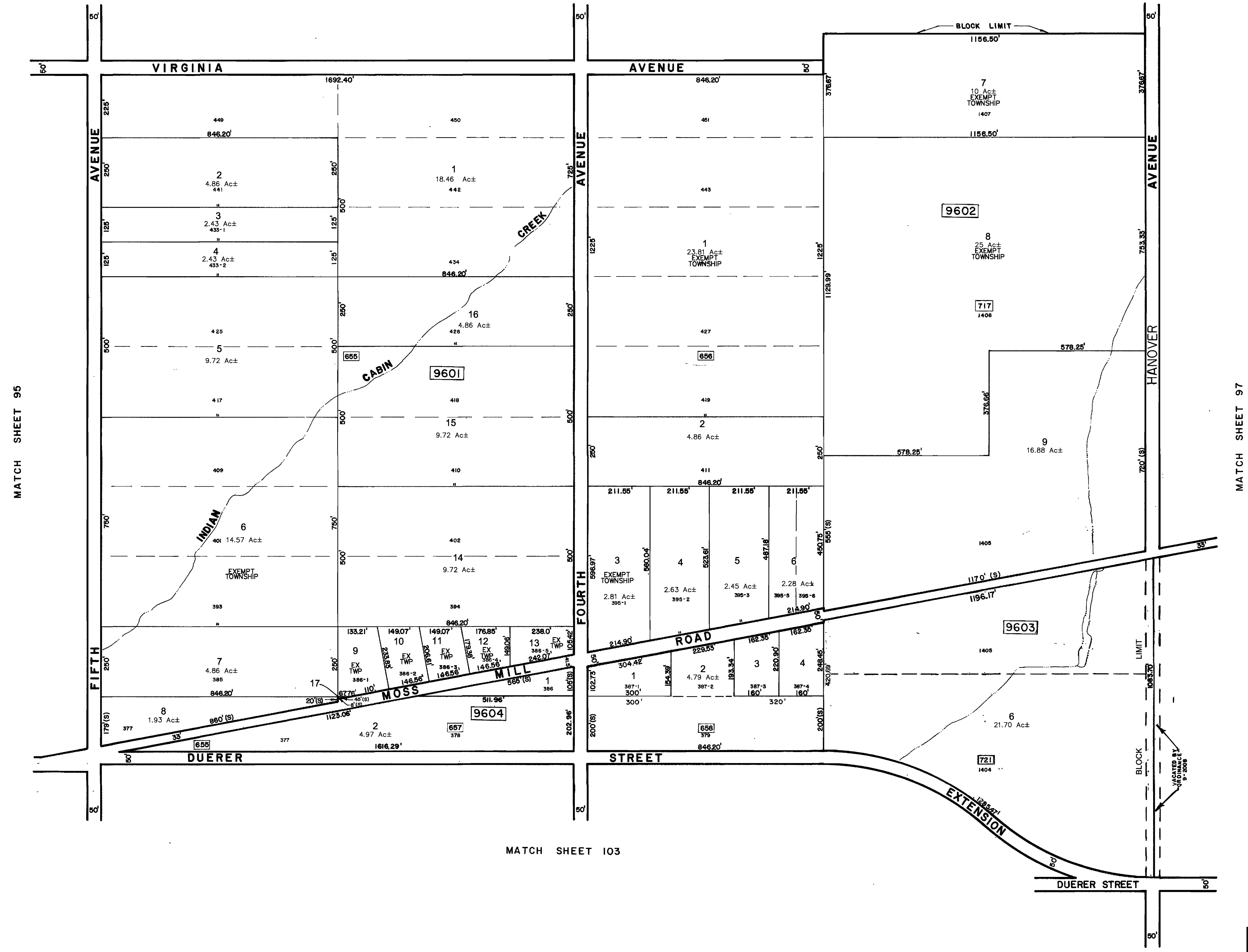


MATCH SHEET 92



THIS MAP WAS FORMALLY  
 CERTIFIED BY THE  
 DIVISION OF TAXATION ON  
 MARCH 14, 1984, SIGNED  
 BY IVAN HAFTKOWITZ AND  
 ASSIGNED SERIAL NUMBER 630

**TAX MAP**  
**TOWNSHIP OF MULLICA**

ATLANTIC COUNTY  
 SCALE: 1" = 200'

NEW JERSEY  
 DATE: NOVEMBER 1983

**CHRIS R. REHMANN**  
 PROFESSIONAL ENGINEER LAND SURVEYOR  
 NEW JERSEY LICENSE NO. 17119  
 850 SO. WHITE HORSE PIKE  
 HAMMONTON, NEW JERSEY 08037  
 CO#P 24GA27973300

TO SHOW CONDITIONS AS OF FEBRUARY 1, 2017

\* THIS MAP IS A SCANNED COPY OF THE ORIGINAL MAP PREPARED BY CHRIS R. REHMANN DATED 1983. THE ORIGINAL APPROVED MAP IS ON FILE IN THE ENGINEERS OFFICE.

REVISIONS				
DATE	BY	LIC. NO.	BLOCK	LOT
7/1991	R.V.			
8/1999	A.T., PA			
7/2008	DORAN ENG.			
12/2010	ED CLAY	34842	9603	6
3/2013	ED CLAY	34842	9603	6