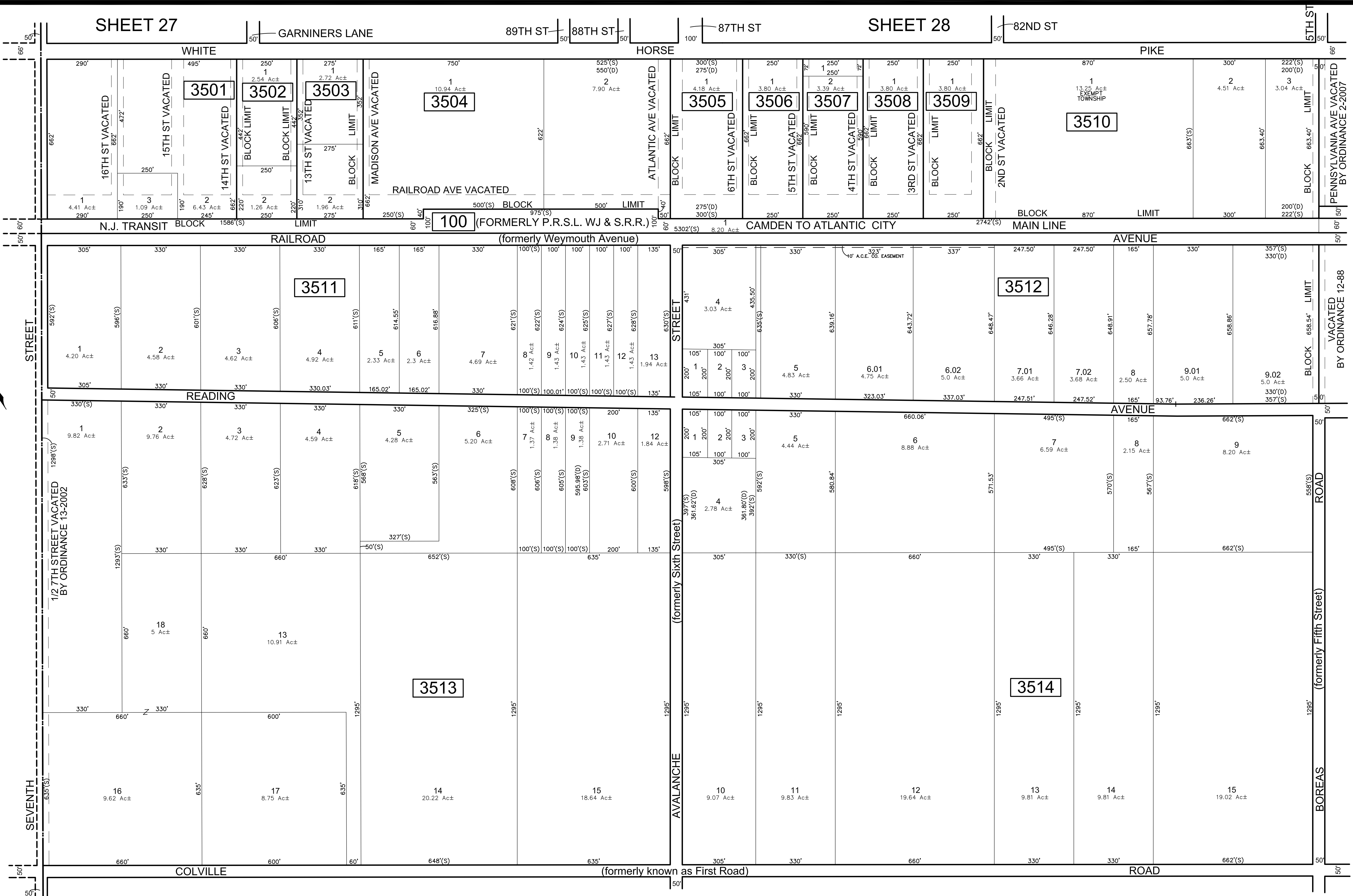


SHEET 27

SHEET 28

SHEET 37

TOWN OF HAMMONTON  
ATLANTIC COUNTY



\* THIS SHEET HAS BEEN DRAWN USING COMPUTER AIDED DRAFTING/  
DESIGN (CAD/D) AND COORDINATE GEOMETRY (COGO).

REVISIONS				
DATE	BY	LIC. NO.	BLOCK	LOT
02/2017	ED CLAY	34842	Asst. Road	Names Changes

SHEET 36

THIS MAP HAS BEEN GIVEN A FORMAL CERTIFICATION BY THE DIVISION OF TAXATION ON JUNE 8, 2017, SIGNED BY JUDITH MILLER, CTA AND SHELLY REILLY, CTA ASSIGNED SERIAL NUMBER 630

**TAX MAP**  
**TOWNSHIP OF MULLICA**

ATLANTIC COUNTY  
SCALE: 1" = 200'

NEW JERSEY  
DATE: JANUARY 2017

**ED CLAY**  
PROFESSIONAL LAND SURVEYOR  
NEW JERSEY LICENSE NO. 34842  
850 SO. WHITE HORSE PIKE  
HAMMONTON, NEW JERSEY 08037  
COA# 24GA27973300

TO SHOW CONDITIONS AS OF FEBRUARY 1, 2017