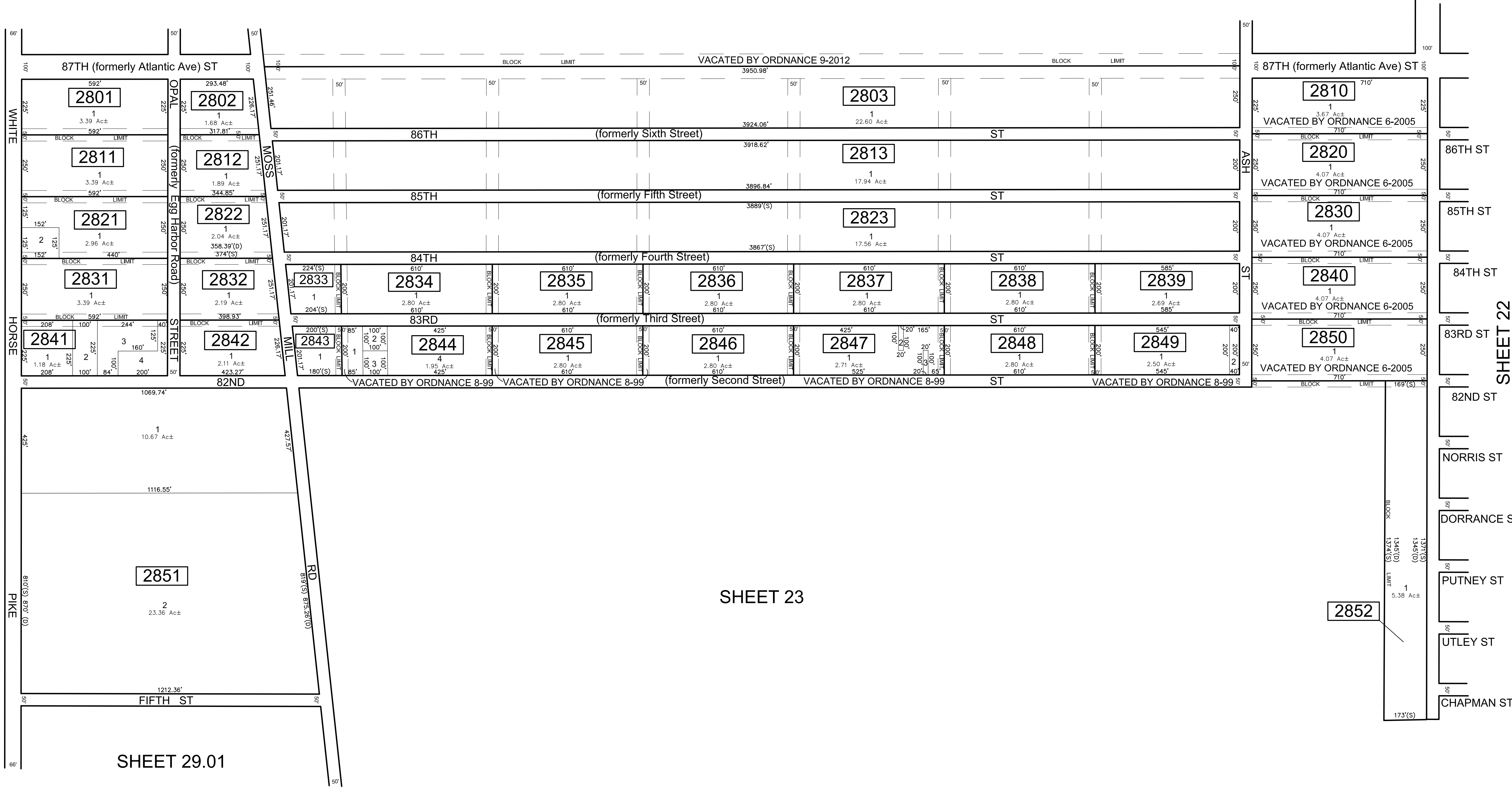


SHEET 27



SHEET 35

SHEET 22

SHEET 29.01

SHEET 23

* THIS SHEET HAS BEEN DRAWN USING COMPUTER AIDED DRAFTING/ DESIGN (CAD/D) AND COORDINATE GEOMETRY (COGO).

REVISIONS				
DATE	BY	LIC.NO	BLOCK	LOT

THIS MAP HAS BEEN GIVEN A FORMAL CERTIFICATION BY THE DIVISION OF TAXATION ON JUNE 8, 2017, SIGNED BY JUDITH MILLER, CTA AND SHELLY REILLY, CTA ASSIGNED SERIAL NUMBER 630

TAX MAP
TOWNSHIP OF MULLICA

ATLANTIC COUNTY
 SCALE: 1" = 200'

NEW JERSEY
 DATE: JANUARY 2017

ED CLAY
 PROFESSIONAL LAND SURVEYOR
 NEW JERSEY LICENSE NO. 34842
 850 SO. WHITE HORSE PIKE
 HAMMONTON, NEW JERSEY 08037
 COA# 24GA27973300

TO SHOW CONDITIONS AS OF FEBRUARY 1, 2017