

THIS MAP WAS FORMALLY
 CERTIFIED BY THE
 DIVISION OF TAXATION ON
 MARCH 14, 1984, SIGNED
 BY IVAN HAFTKOWITZ AND
 ASSIGNED SERIAL NUMBER 630

**TAX MAP
 TOWNSHIP OF MULLICA**

ATLANTIC COUNTY NEW JERSEY
 SCALE: 1" = 200' DATE: NOVEMBER 1983

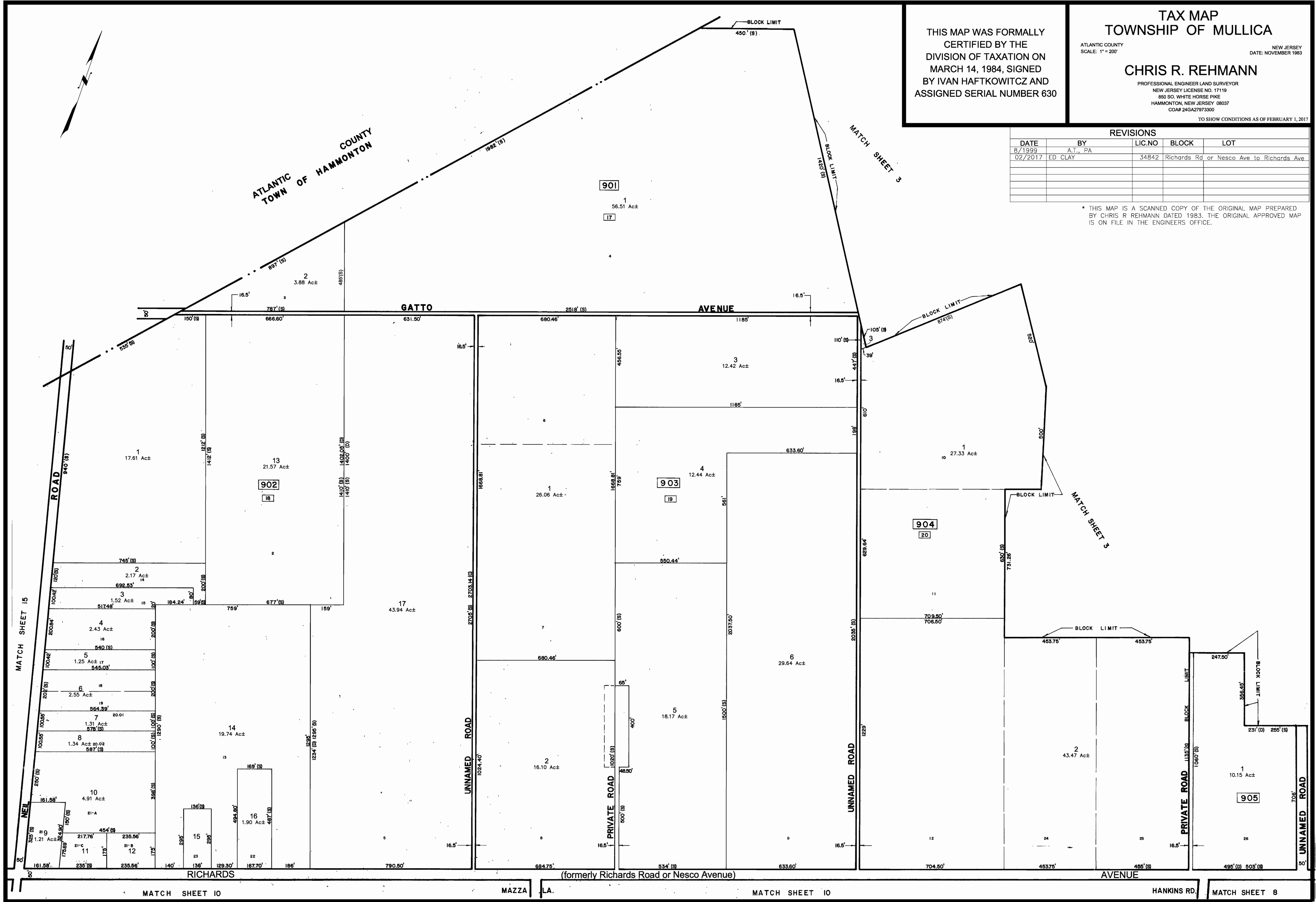
CHRIS R. REHMANN

PROFESSIONAL ENGINEER LAND SURVEYOR
 NEW JERSEY LICENSE NO. 17119
 850 SO. WHITE HORSE PIKE
 HAMMONTON, NEW JERSEY 08037
 COA# 24GA27973300

TO SHOW CONDITIONS AS OF FEBRUARY 1, 2017

REVISIONS				
DATE	BY	LIC. NO.	BLOCK	LOT
8/1999	A.T., PA			
02/2017	ED CLAY	34842	Richards Rd or Nesco Ave to Richards Ave	

* THIS MAP IS A SCANNED COPY OF THE ORIGINAL MAP PREPARED BY CHRIS R REHMANN DATED 1983. THE ORIGINAL APPROVED MAP IS ON FILE IN THE ENGINEERS OFFICE.



MATCH SHEET 10

MAZZA

LA.

MATCH SHEET 10

HANKINS RD.

MATCH SHEET 8