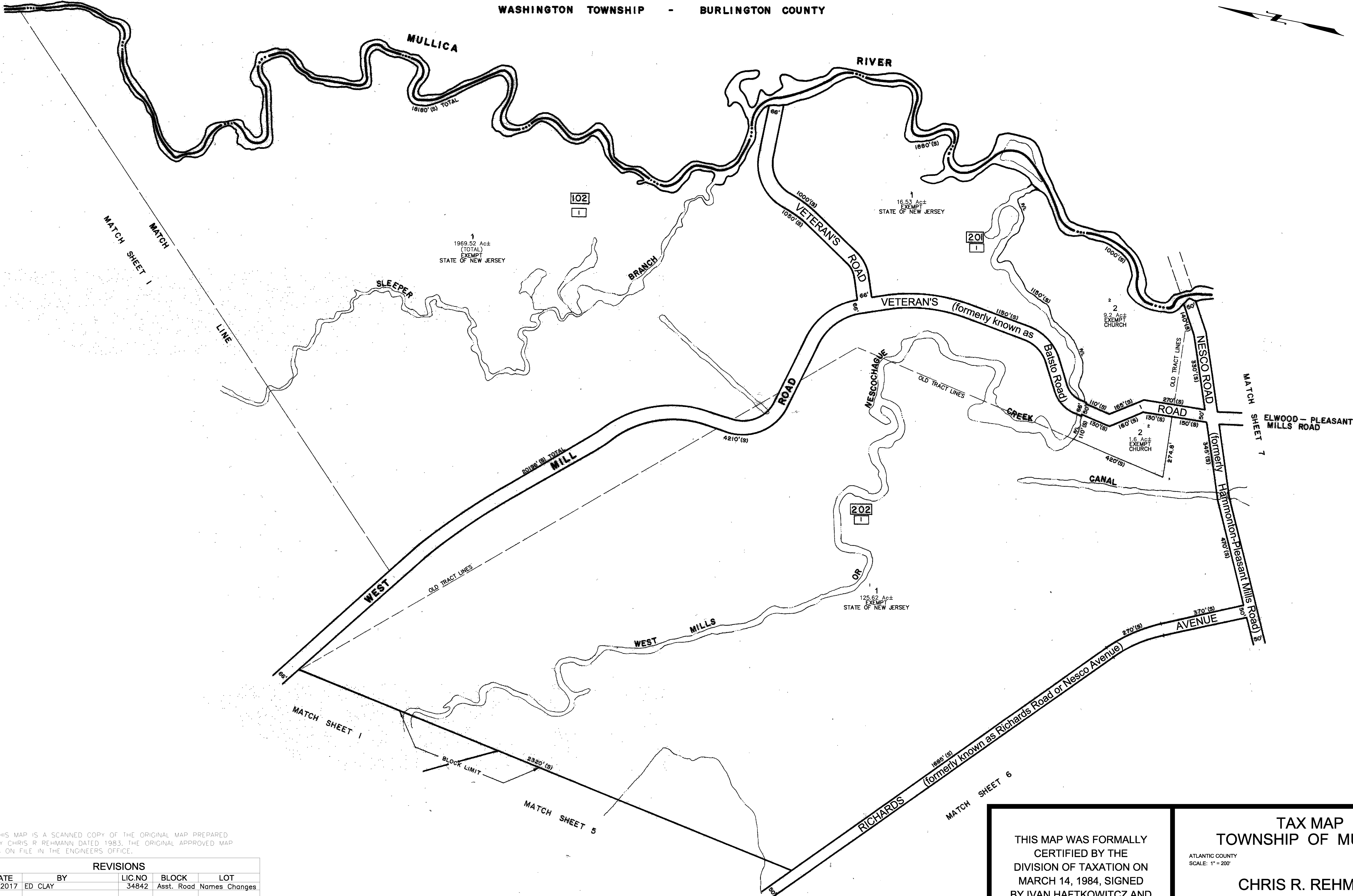
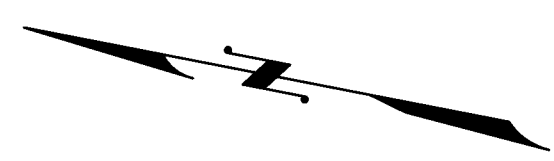


WASHINGTON TOWNSHIP - BURLINGTON COUNTY



THIS MAP IS A SCANNED COPY OF THE ORIGINAL MAP PREPARED BY CHRIS R. REHMANN DATED 1983. THE ORIGINAL APPROVED MAP IS ON FILE IN THE ENGINEERS OFFICE.

REVISIONS				
DATE	BY	LIC. NO.	BLOCK	LOT
02/2017	ED CLAY	34842	Asst. Road	Names Changes

THIS MAP WAS FORMALLY CERTIFIED BY THE DIVISION OF TAXATION ON MARCH 14, 1984, SIGNED BY IVAN HAFTKOWITZ AND ASSIGNED SERIAL NUMBER 630

**TAX MAP**  
**TOWNSHIP OF MULLICA**

ATLANTIC COUNTY  
 SCALE: 1" = 200'

NEW JERSEY  
 DATE: NOVEMBER 1983

**CHRIS R. REHMANN**  
 PROFESSIONAL ENGINEER LAND SURVEYOR  
 NEW JERSEY LICENSE NO. 17119  
 880 SO. WHITE HORSE PIKE  
 HAMMONTON, NEW JERSEY 08037  
 CO.# 24GA27973300

TO SHOW CONDITIONS AS OF FEBRUARY 1, 2017