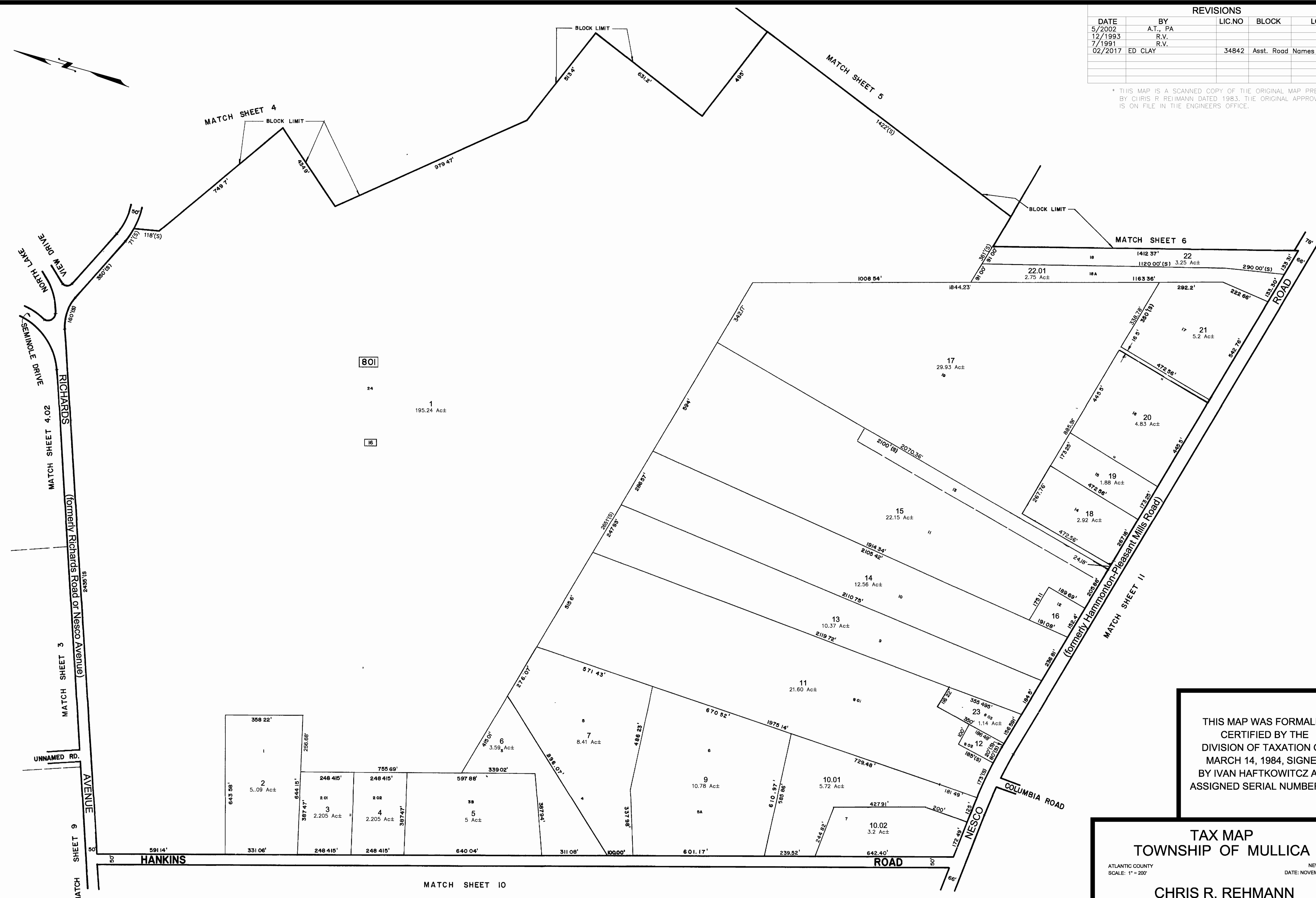


REVISIONS				
DATE	BY	LIC.NO	BLOCK	LOT
5/2002	A.T., PA			
12/1993	R.V.			
7/1991	R.V.			
02/2017	ED CLAY	34842	Asst. Road	Names Changes

* THIS MAP IS A SCANNED COPY OF THE ORIGINAL MAP PREPARED BY CHRIS R. REHMANN DATED 1983. THE ORIGINAL APPROVED MAP IS ON FILE IN THE ENGINEERS OFFICE.



THIS MAP WAS FORMALLY CERTIFIED BY THE DIVISION OF TAXATION ON MARCH 14, 1984, SIGNED BY IVAN HAFTKOWITCZ AND ASSIGNED SERIAL NUMBER 630

TAX MAP
TOWNSHIP OF MULLICA

ATLANTIC COUNTY NEW JERSEY
SCALE: 1" = 200' DATE: NOVEMBER 1983

CHRIS R. REHMANN
PROFESSIONAL ENGINEER LAND SURVEYOR
NEW JERSEY LICENSE NO. 17119
850 SO. WHITE HORSE PIKE
HAMMONTON, NEW JERSEY 08037
CO# 24GA27973000

TO SHOW CONDITIONS AS OF FEBRUARY 1, 2017

REVISED BY ALEXANDER M. CHURCHILL ASSOC.- MARCH '96