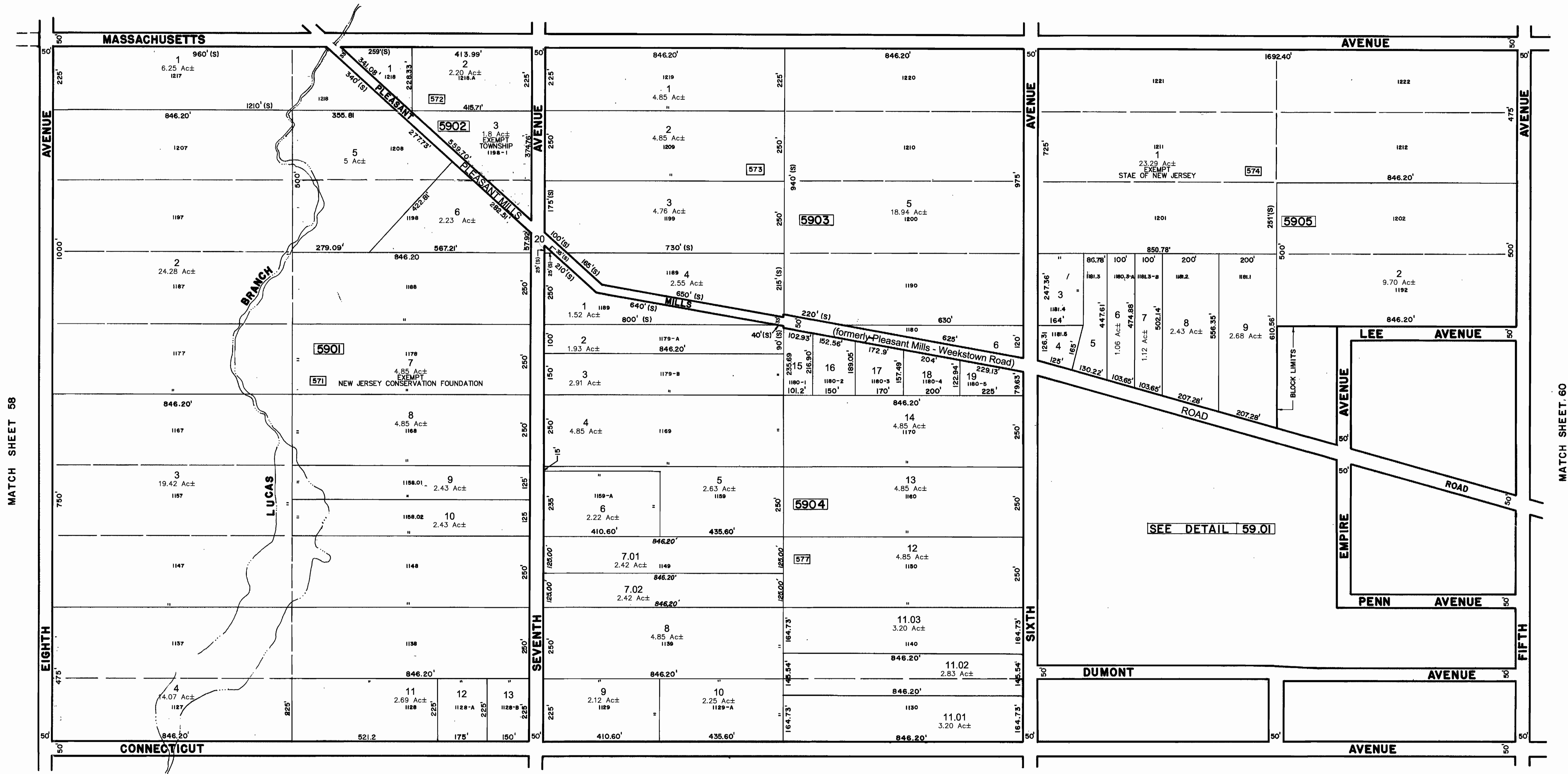


MATCH SHEET 50

MATCH SHEET 51



MATCH SHEET 61

\* THIS MAP IS A SCANNED COPY OF THE ORIGINAL MAP PREPARED BY CHRIS R. REHMANN DATED 1983. THE ORIGINAL APPROVED MAP IS ON FILE IN THE ENGINEERS OFFICE.

REVISIONS				
DATE	BY	LIC. NO.	BLOCK	LOT
1/1992	R.V.			
12/1998	A.T.			
02/2017	ED CLAY	34842	Pleasant Mills Weekstown Rd to pleasant Mills Rd	

THIS MAP WAS FORMALLY CERTIFIED BY THE DIVISION OF TAXATION ON MARCH 14, 1984, SIGNED BY IVAN HAFTKOWITZ AND ASSIGNED SERIAL NUMBER 630

**TAX MAP  
TOWNSHIP OF MULLICA**

ATLANTIC COUNTY  
SCALE: 1" = 200'

NEW JERSEY  
DATE: NOVEMBER 1983

**CHRIS R. REHMANN**

PROFESSIONAL ENGINEER LAND SURVEYOR  
NEW JERSEY LICENSE NO. 17119  
850 SO. WHITE HORSE PIKE  
HAMMONTON, NEW JERSEY 08037  
COAF# 24GA27973300

TO SHOW CONDITIONS AS OF FEBRUARY 1, 2017