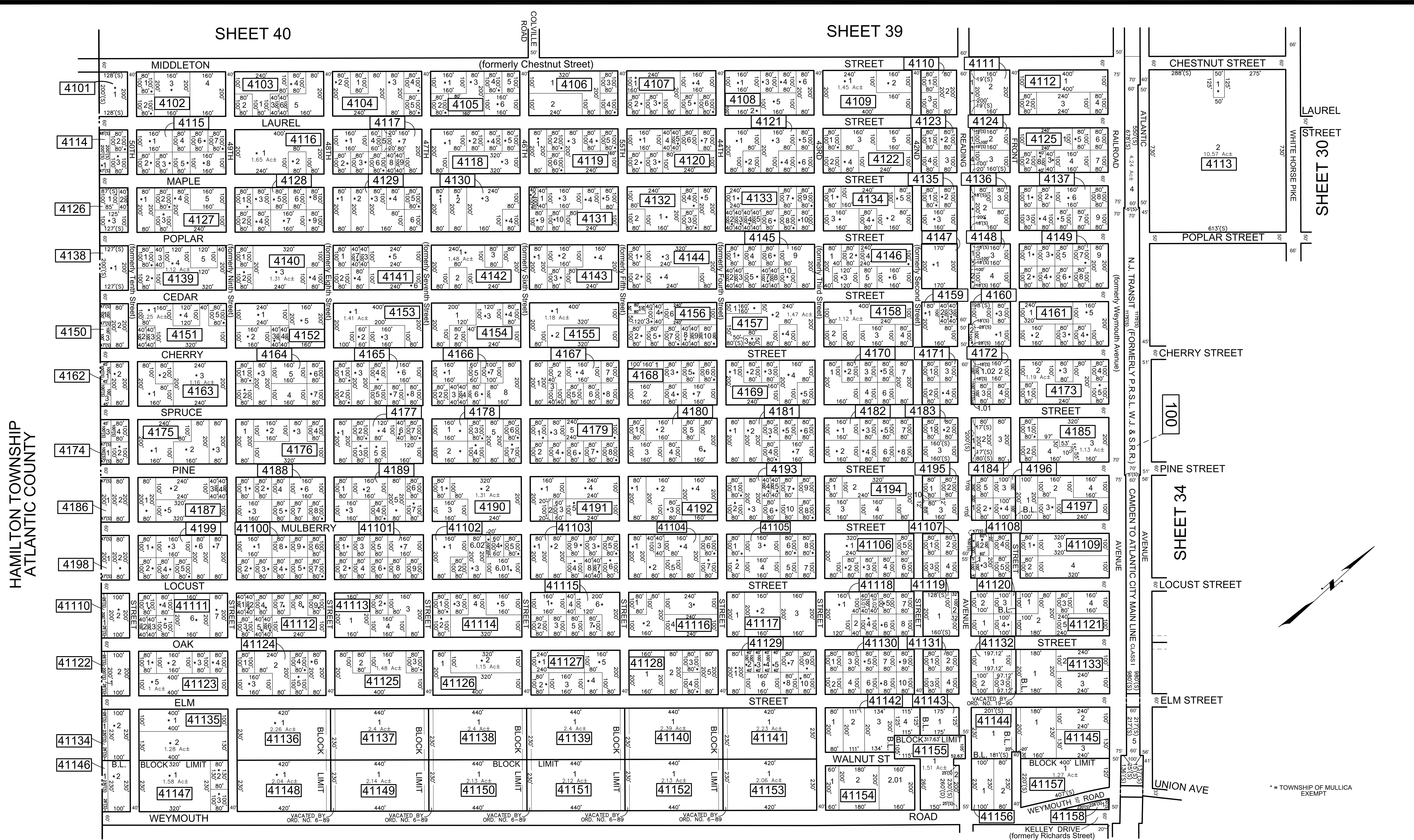


SHEET 40

SHEET 39



* THIS SHEET HAS BEEN DRAWN USING COMPUTER AIDED DRAFTING/ DESIGN (CAD/D) AND COORDINATE GEOMETRY (COGO).

REVISIONS				
DATE	BY	LIC. NO.	BLOCK	LOT
02/2017	ED CLAY	34842	Asst. Road Names Changes	

SHEET 109

SHEET 108

THIS MAP HAS BEEN GIVEN A FORMAL CERTIFICATION BY THE DIVISION OF TAXATION ON JUNE 8, 2017, SIGNED BY JUDITH MILLER, CTA AND SHELLY REILLY, CTA ASSIGNED SERIAL NUMBER 630

TAX MAP
TOWNSHIP OF MULLICA
 ATLANTIC COUNTY NEW JERSEY
 SCALE: 1" = 200'
 DATE: JANUARY 2017

ED CLAY
 PROFESSIONAL LAND SURVEYOR
 NEW JERSEY LICENSE NO. 34842
 850 SO. WHITE HORSE PIKE
 HAMMONTON, NEW JERSEY 08037
 COAF# 246A27973300

TO SHOW CONDITIONS AS OF FEBRUARY 1, 2017