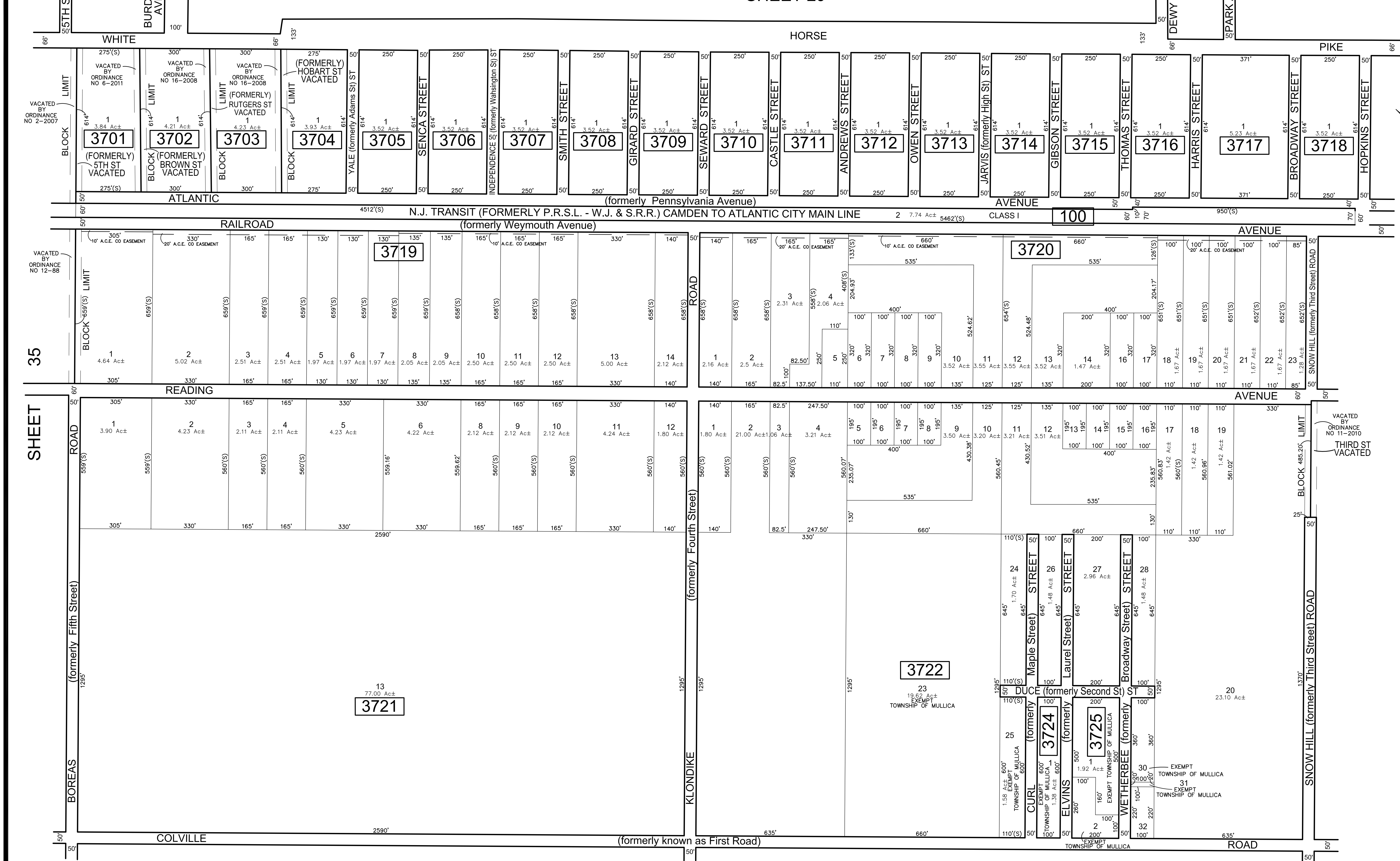


SHEET 29.01

SHEET 29



\* THIS SHEET HAS BEEN DRAWN USING COMPUTER AIDED DRAFTING/ DESIGN (CAD/D) AND COORDINATE GEOMETRY (COGO).

REVISIONS				
DATE	BY	LIC. NO.	BLOCK	LOT
02/2017	ED CLAY	34842	Asst. Road	Names Changes

SHEET 38

THIS MAP HAS BEEN GIVEN A FORMAL CERTIFICATION BY THE DIVISION OF TAXATION ON JUNE 8, 2017, SIGNED BY JUDITH MILLER, CTA AND SHELLY REILLY, CTA ASSIGNED SERIAL NUMBER 630

TAX MAP  
TOWNSHIP OF MULLICA

ATLANTIC COUNTY  
SCALE: 1" = 200'

NEW JERSEY  
DATE: JANUARY 2017

**ED CLAY**

PROFESSIONAL LAND SURVEYOR  
NEW JERSEY LICENSE NO. 34842  
850 SO. WHITE HORSE PIKE  
HAMMONTON, NEW JERSEY 08037  
CO#A# 246A27973300

TO SHOW CONDITIONS AS OF FEBRUARY 1, 2017