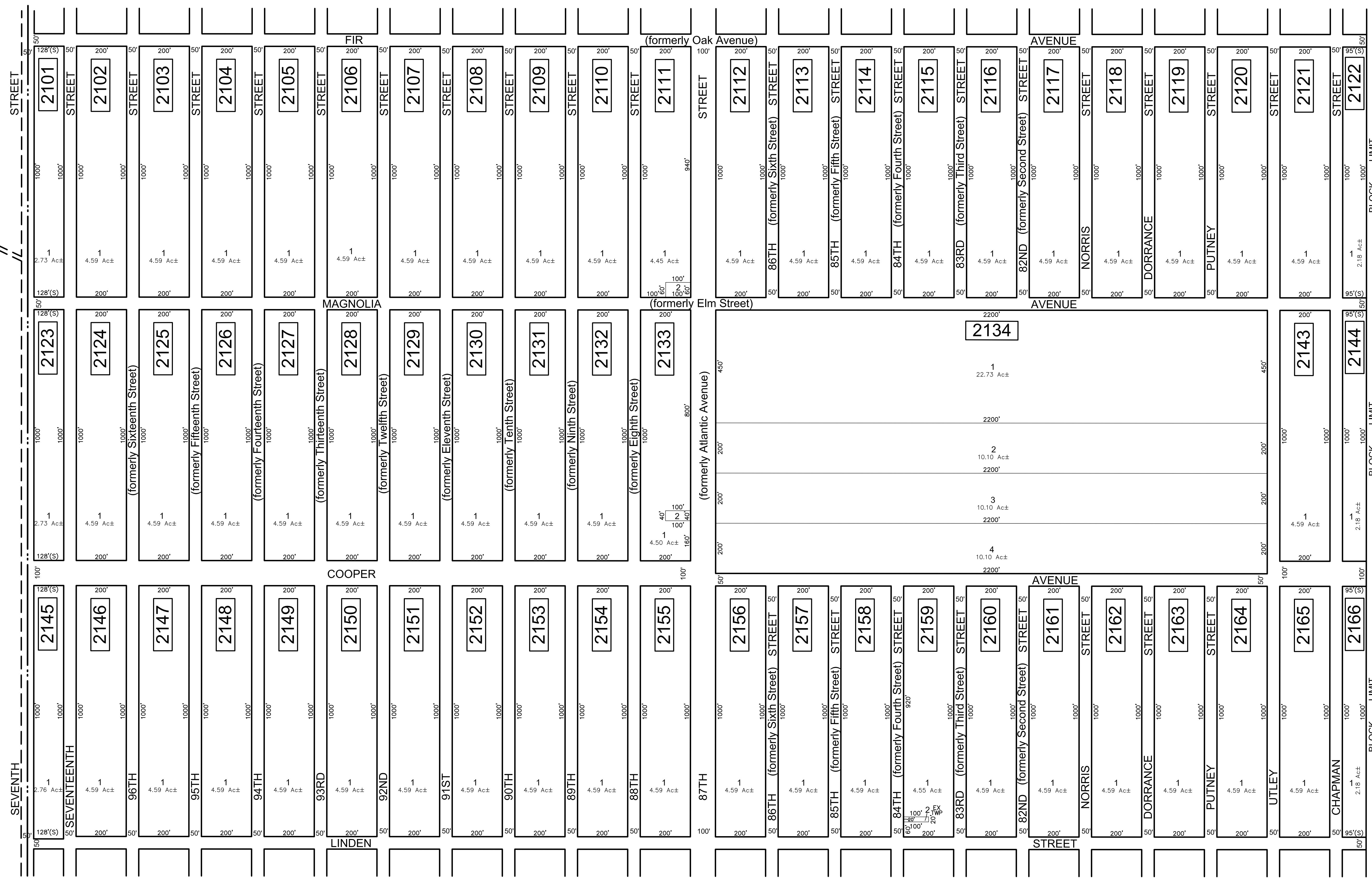
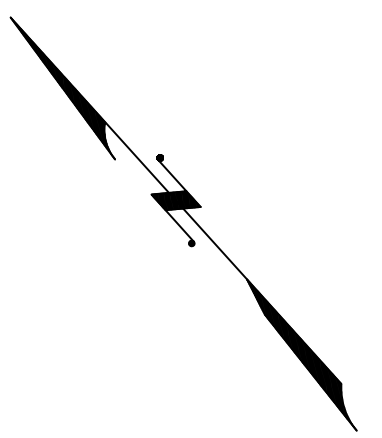


SHEET 20

TOWN OF HAMMONTON
ATLANTIC COUNTY



SHEET 22

* THIS SHEET HAS BEEN DRAWN USING COMPUTER AIDED DRAFTING/ DESIGN (CAD/D) AND COORDINATE GEOMETRY (COGO).

REVISIONS				
DATE	BY	LIC. NO.	BLOCK	LOT
02/2017	ED CLAY	34842	Asst. Road Names Changes	

VARIETY FARMS
Block 2003 Lot 1 with additional lots:

Block #	Lot #	Block #	Lot #	Block #	Lot #	Block #	Lot #
2101	1	2113	1	2125	1	2146	1
2102	1	2114	1	2126	1	2147	1
2103	1	2115	1	2127	1	2148	1
2104	1	2116	1	2128	1	2149	1
2105	1	2117	1	2129	1	2150	1
2106	1	2118	1	2130	1	2151	1
2107	1	2119	1	2131	1	2152	1
2108	1	2120	1	2132	1	2153	1
2109	1	2121	1	2133	1	2154	1
2110	1	2122	1	2143	1	2155	1
2111	1	2123	1	2144	1	2156	1
2112	1	2124	1	2145	1	2157	1

THIS MAP HAS BEEN GIVEN A FORMAL CERTIFICATION BY THE DIVISION OF TAXATION ON JUNE 8, 2017, SIGNED BY JUDITH MILLER, CTA AND SHELLY REILLY, CTA ASSIGNED SERIAL NUMBER 630

TAX MAP
TOWNSHIP OF MULLICA

ATLANTIC COUNTY
SCALE: 1" = 200'

NEW JERSEY
DATE: JANUARY 2017

ED CLAY
PROFESSIONAL LAND SURVEYOR
NEW JERSEY LICENSE NO. 34842
850 SO. WHITE HORSE PIKE
HAMMONTON, NEW JERSEY 08037
COA# 24GA2797300

TO SHOW CONDITIONS AS OF FEBRUARY 1, 2017

SHEET 23