

KEYMAP 1

THIS TAX MAP SUPERSEDES THE TAX MAP APPROVED MARCH, 1984

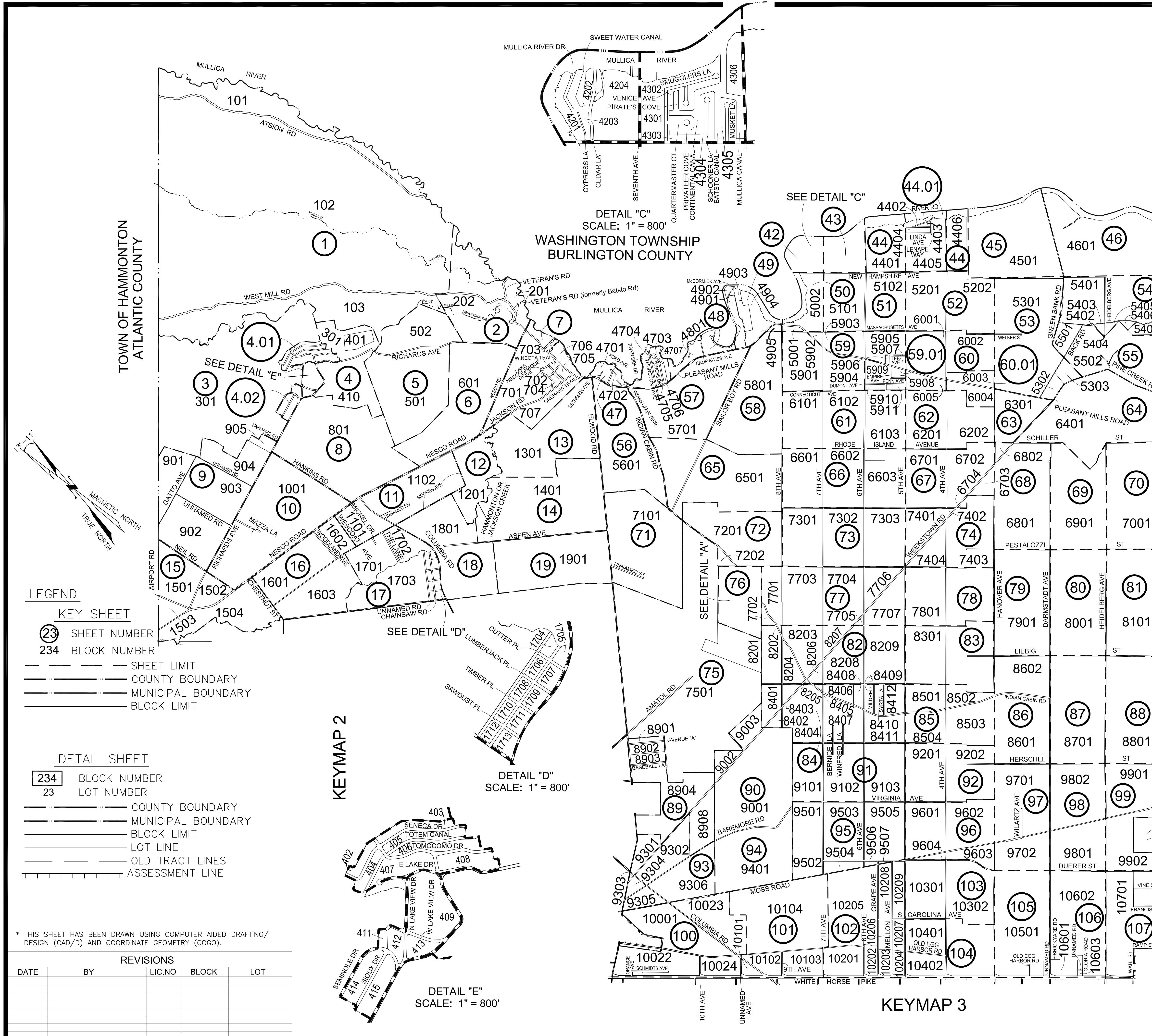
THE AREAS, BOUNDARIES AND DIMENSIONS SHOWN ON THIS TAX MAP ARE DERIVED FROM GROUND SURVEYS, AERIAL SURVEYS, AND RECORDED PLANS, MAPS, DEEDS AND WILLS, AND ARE TO BE USED FOR ASSESSMENT PURPOSES ONLY.

* THIS SHEET HAS BEEN DRAWN USING COMPUTER AIDED DRAFTING/ DESIGN (CAD/D) AND COORDINATE GEOMETRY (COGO).

I HEREBY CERTIFY THAT THIS MAP AND ANY REQUIRED SURVEY HAS BEEN REVISED UNDER MY IMMEDIATE SUPERVISION, AND COMPLIES WITH THE LAWS OF THE STATE OF NEW JERSEY.

ED CLAY, LICENSED LAND SURVEYOR
N.J. LICENSE NO. 34842

DATE



TOWN OF HAMMONTON
ATLANTIC COUNTY

EGG HARBOR CITY
ATLANTIC COUNTY

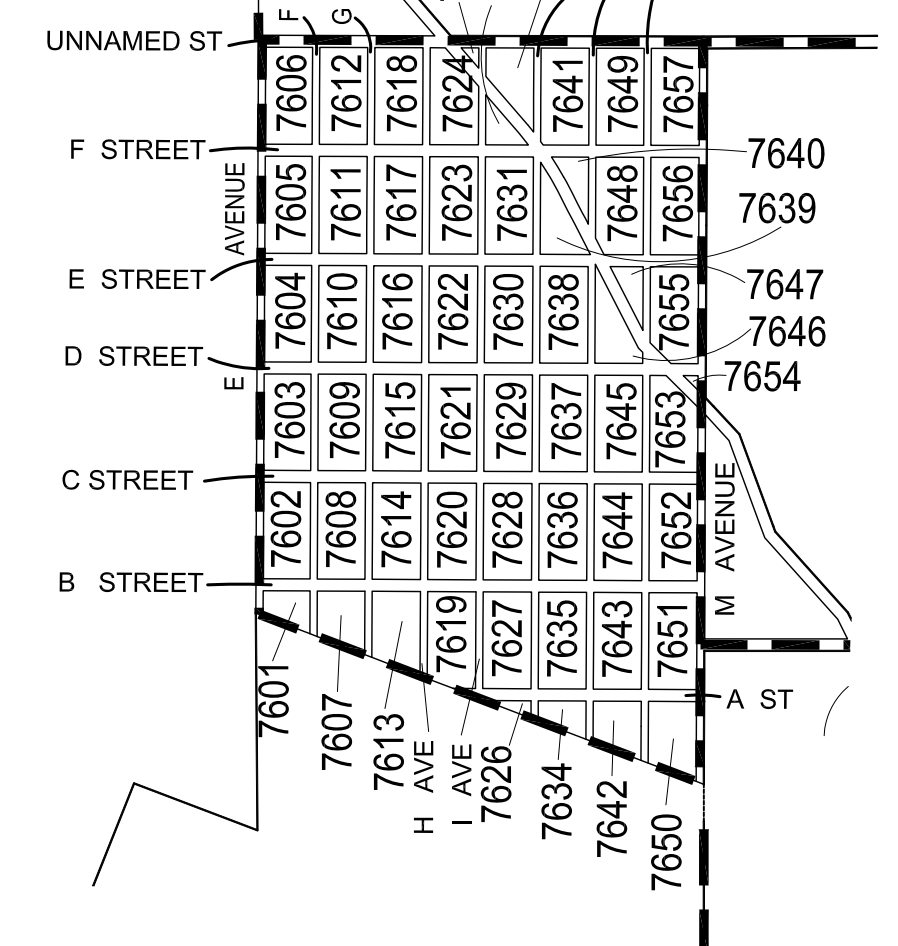
DETAIL "C"
SCALE: 1" = 800'
WASHINGTON TOWNSHIP
BURLINGTON COUNTY

SEE DETAIL "E"

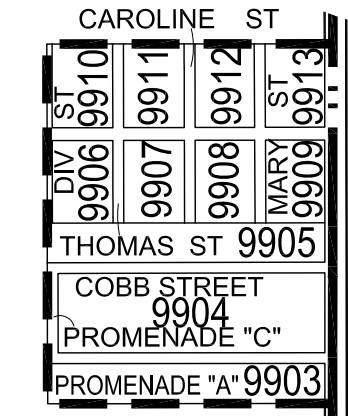
SEE DETAIL "D"

SEE DETAIL "A"

FILES LANDING RD

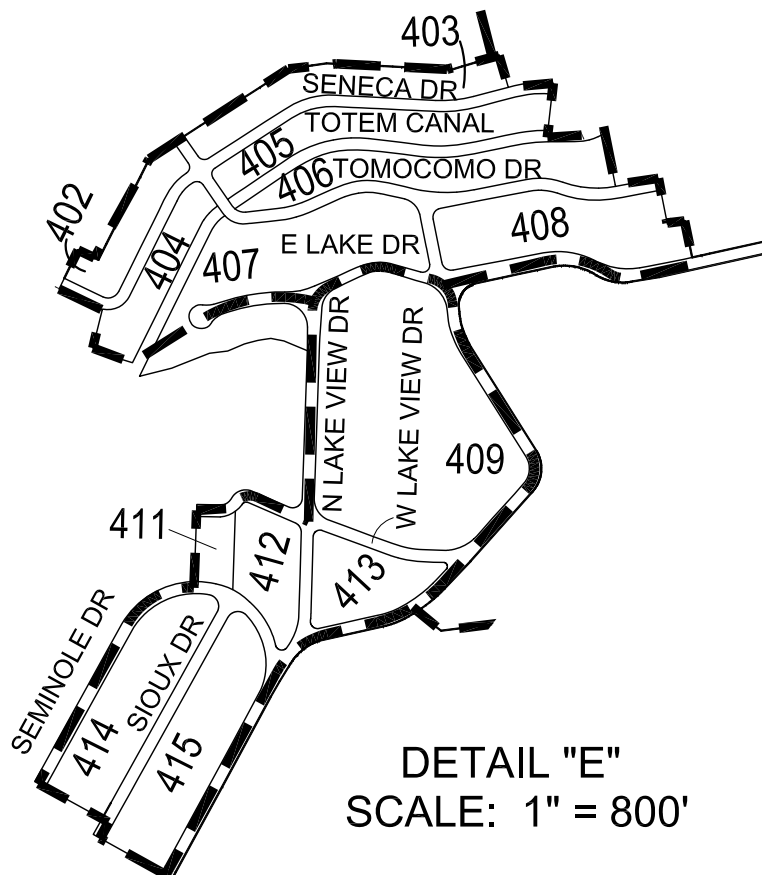


DETAIL "A"
SCALE: 1" = 800'



DETAIL "B"
SCALE: 1" = 800'

DETAIL "D"
SCALE: 1" = 800'



DETAIL "E"
SCALE: 1" = 800'

KEYMAP 2

KEYMAP 3

LEGEND

KEY SHEET

- 23 SHEET NUMBER
- 234 BLOCK NUMBER
- SHEET LIMIT
- COUNTY BOUNDARY
- MUNICIPAL BOUNDARY
- BLOCK LIMIT

DETAIL SHEET

- 234 BLOCK NUMBER
- 23 LOT NUMBER
- COUNTY BOUNDARY
- MUNICIPAL BOUNDARY
- BLOCK LIMIT
- LOT LINE
- OLD TRACT LINES
- ASSESSMENT LINE

* THIS SHEET HAS BEEN DRAWN USING COMPUTER AIDED DRAFTING/ DESIGN (CAD/D) AND COORDINATE GEOMETRY (COGO).

REVISIONS				
DATE	BY	LIC.NO	BLOCK	LOT

THIS MAP HAS BEEN GIVEN A FORMAL CERTIFICATION BY THE DIVISION OF TAXATION ON JUNE 8, 2017, SIGNED BY JUDITH MILLER, CTA AND SHELLY REILLY, CTA ASSIGNED SERIAL NUMBER 630

TAX MAP
TOWNSHIP OF MULLICA

ATLANTIC COUNTY
SCALE: 1" = 2000'
NEW JERSEY
DATE: JANUARY 2017
ED CLAY
PROFESSIONAL LAND SURVEYOR
NEW JERSEY LICENSE NO. 34842
850 SO. WHITE HORSE PIKE
HAMMONTON, NEW JERSEY 08037
COA# 24GA27973300

KEYMAP 1

TO SHOW CONDITIONS AS OF FEBRUARY 1, 2017