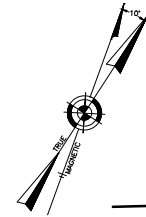
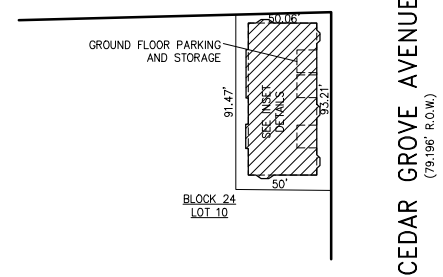


REVISIONS

NO.	DATE	DESCRIPTION

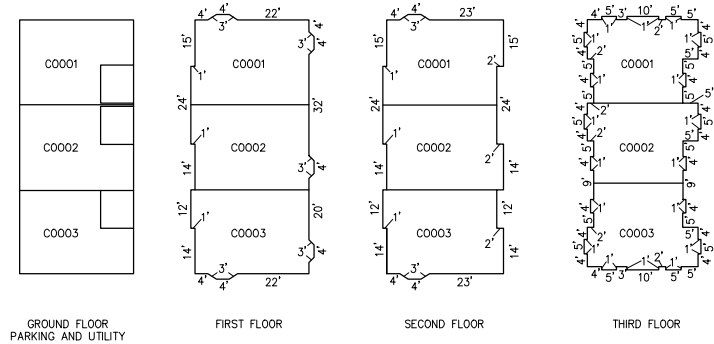


ATLANTIC AVENUE
(100' R.O.W.)



PLAN
SCALE: 1"=50'

BLOCK 24
THREE STORY



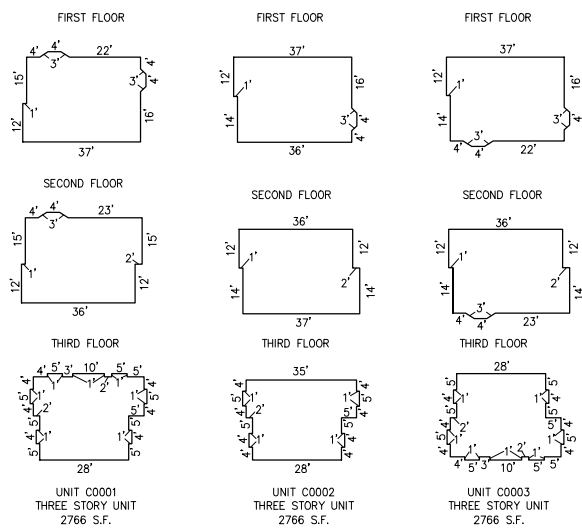
GROUND FLOOR
PARKING AND UTILITY

FIRST FLOOR

SECOND FLOOR

THIRD FLOOR

DETAILS
SCALE: 1"=30'



UNIT C0001
THREE STORY UNIT
2766 S.F.

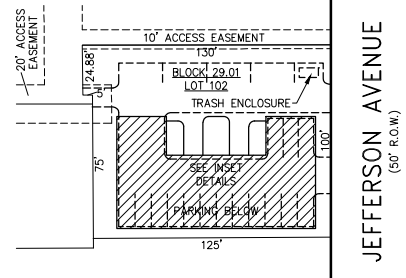
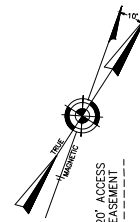
UNIT C0002
THREE STORY UNIT
2766 S.F.

UNIT C0003
THREE STORY UNIT
2766 S.F.

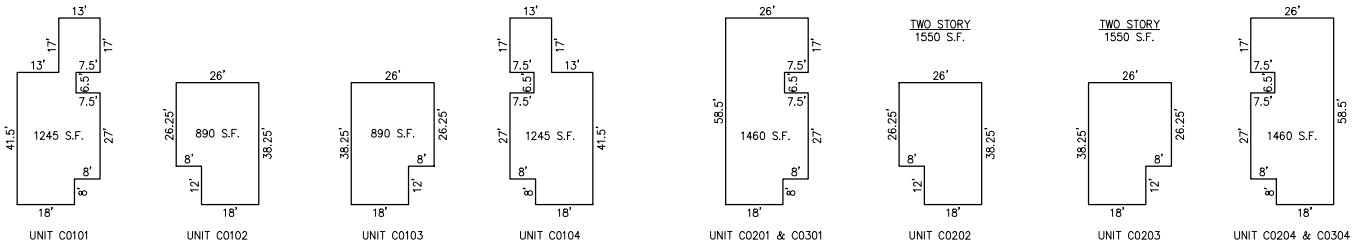
NOTE: DIMENSIONS AND SQUARE FOOTAGE ARE TYPICAL FOR SIMILAR UNITS

DETAILS
SCALE: 1"=30'

BLOCK 24, LOT 10
LA VELA CONDOMINIUM
9100 ATLANTIC AVENUE
INSET "PPPP"



PLAN
SCALE: 1"=50'



UNIT C0101

UNIT C0102

UNIT C0103

UNIT C0104

UNIT C0201 & C0301

UNIT C0202

UNIT C0203

UNIT C0204 & C0304

NOTE: DIMENSIONS AND SQUARE FOOTAGE ARE TYPICAL FOR SIMILAR UNITS

DETAILS
SCALE: 1"=30'

BLOCK 29.01, LOT 102
JEFFERSON BEACH HOUSE CONDOMINIUM
120 SOUTH JEFFERSON AVENUE
INSET "O"

CONDOMINIUM DETAILS AND DIMENSIONS
BLOCK 24, LOT 10
BLOCK 29.01, LOT 102
SEE PLATE 23

"THIS TAX MAP PLATE HAS BEEN DIGITALLY DRAWN USING COMPUTER-AIDED DRAFTING/DESIGN (CAD) & COORDINATE GEOMETRY (COGO). IT IS BASED ON THE ORIGINAL DIGITALLY DRAWN TAX MAP PLATE BEARING THE OFFICIAL NEW JERSEY DIVISION TAXATION APPROVAL STAMP WITH APPROVAL DATE 6-3-2005 SERIAL NUMBER 846 AND SIGNATURES OF SIGNERS' THOMAS J. REILLY, CHIEF, LOCAL PROPERTY, FIELD ASSISTANCE, SANTO C. DIDONATO, SUPERVISING FIELD REPRESENTATIVE. THE ORIGINAL DIGITALLY DRAWN TAX MAP PLATE WITH THE OFFICIAL APPROVAL STAMP IS ON FILE WITH REMINGTON, VERNICK & WALBERG ENGINEERS."



TAX MAP
CITY OF MARGATE

ATLANTIC COUNTY NEW JERSEY

SCALE: AS NOTED DATE: 1-30-2004

CRAIG F. REMINGTON LAND SURVEYOR LIC. NO. 23924

REMINGTON, VERNICK & WALBERG ENGINEERS
24 GA 28048700
845 N. MAN STREET, PLEASANTVILLE, NJ 08232
(609) 645-7100 FAX (609) 645-7076
WEB SITE ADDRESS: WWW.RVW.COM