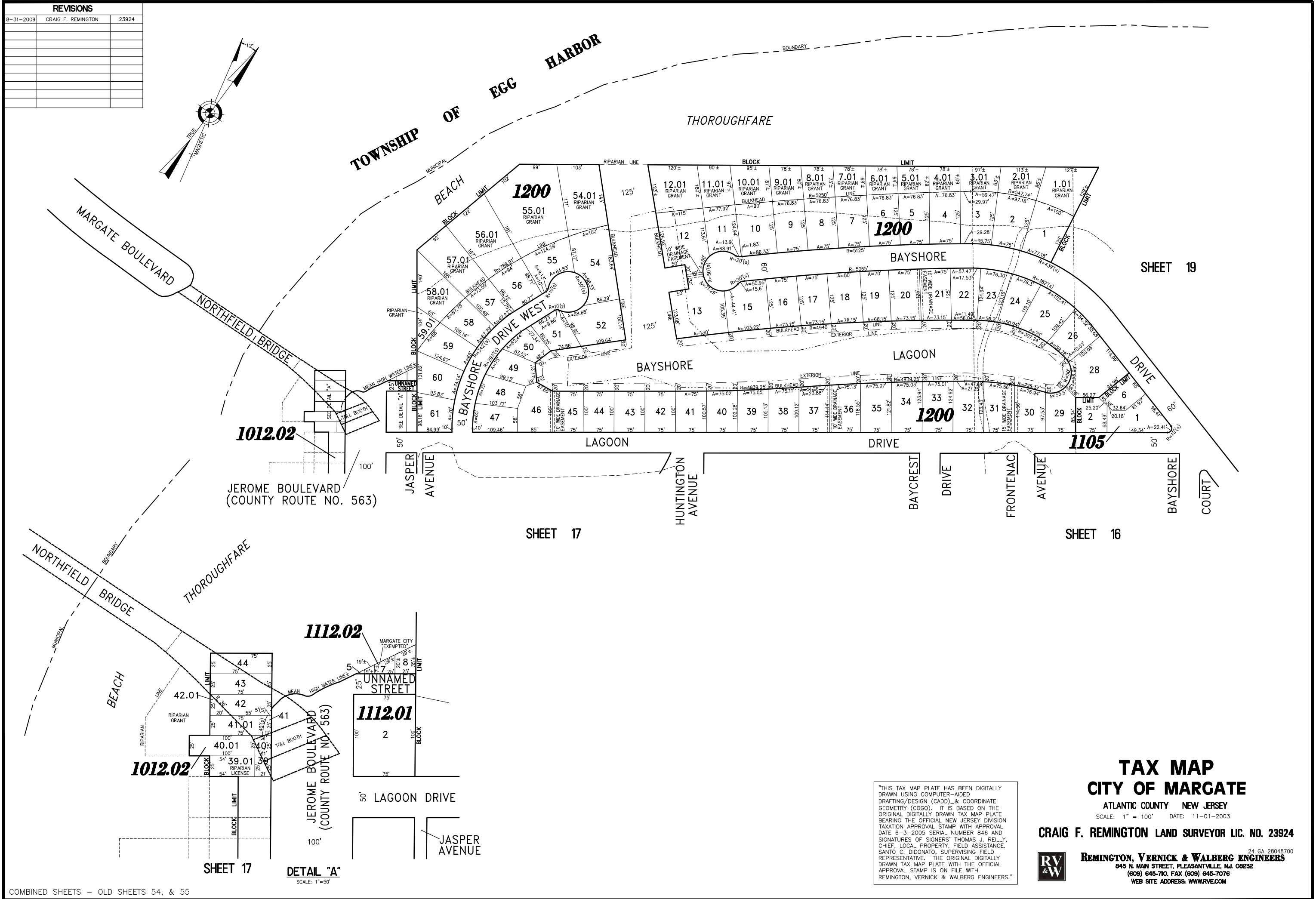
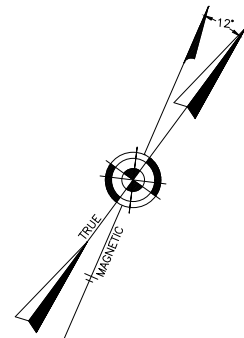


REVISIONS		
8-31-2009	CRAIG F. REMINGTON	23924



1012.02
 JEROME BOULEVARD
 (COUNTY ROUTE NO. 563)

1112.02
1112.01
 JEROME BOULEVARD
 (COUNTY ROUTE NO. 563)

1012.02
 JEROME BOULEVARD
 (COUNTY ROUTE NO. 563)

"THIS TAX MAP PLATE HAS BEEN DIGITALLY DRAWN USING COMPUTER-AIDED DRAFTING/DESIGN (CADD) & COORDINATE GEOMETRY (COGO). IT IS BASED ON THE ORIGINAL DIGITALLY DRAWN TAX MAP PLATE BEARING THE OFFICIAL NEW JERSEY DIVISION TAXATION APPROVAL STAMP WITH APPROVAL DATE 6-3-2005 SERIAL NUMBER 846 AND SIGNATURES OF SIGNERS' THOMAS J. REILLY, CHIEF, LOCAL PROPERTY, FIELD ASSISTANCE, SANTO C. DIDONATO, SUPERVISING FIELD REPRESENTATIVE. THE ORIGINAL DIGITALLY DRAWN TAX MAP PLATE WITH THE OFFICIAL APPROVAL STAMP IS ON FILE WITH REMINGTON, VERNICK & WALBERG ENGINEERS."

**TAX MAP
 CITY OF MARGATE**

ATLANTIC COUNTY NEW JERSEY
 SCALE: 1" = 100' DATE: 11-01-2003
CRAIG F. REMINGTON LAND SURVEYOR LIC. NO. 23924
REMINGTON, VERNICK & WALBERG ENGINEERS
 845 N. MAIN STREET, PLEASANTVILLE, N.J. 08232
 (609) 645-710, FAX (609) 645-7076
 WEB SITE ADDRESS: WWW.RVW.COM

DETAIL "A"
 SCALE: 1"=50'