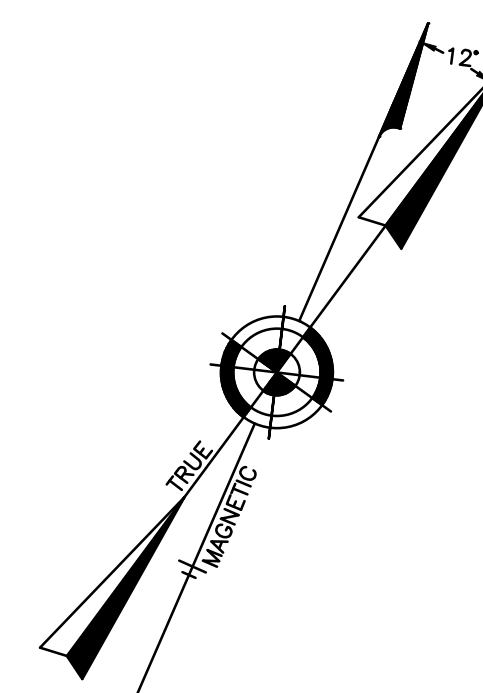


SHEET 16

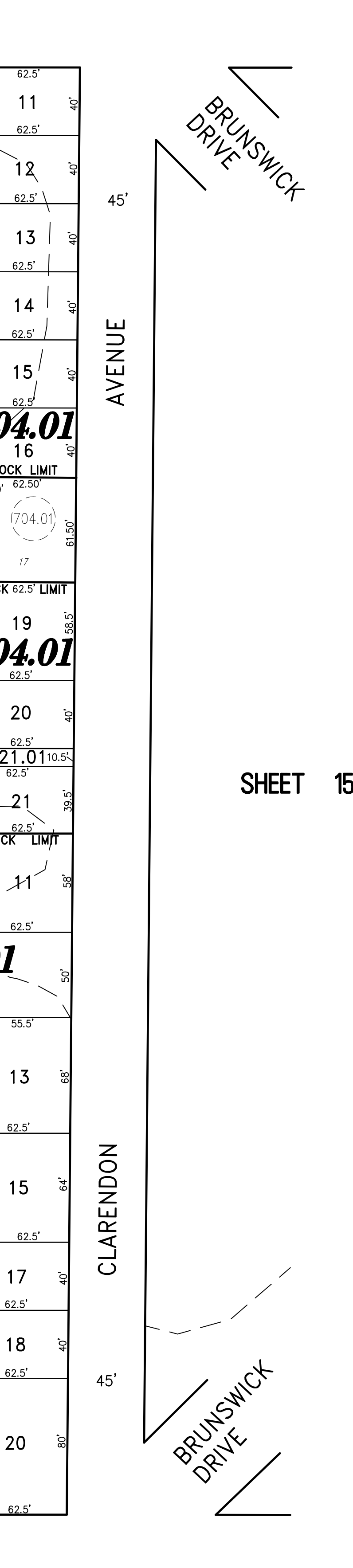
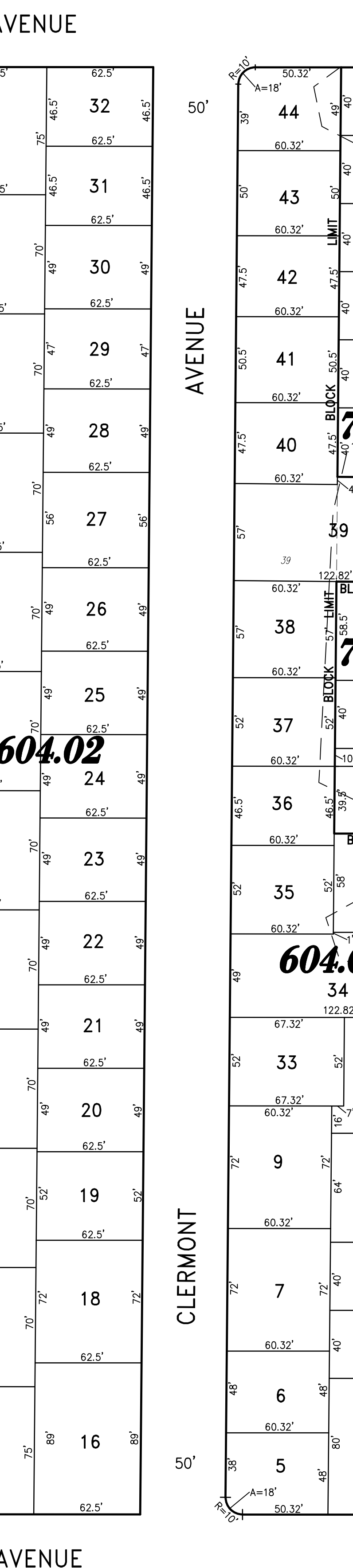
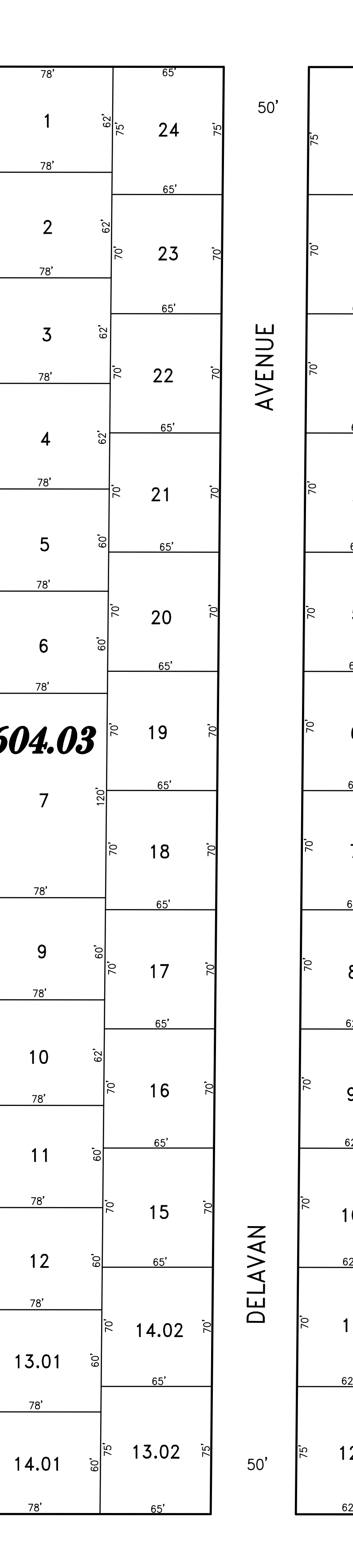
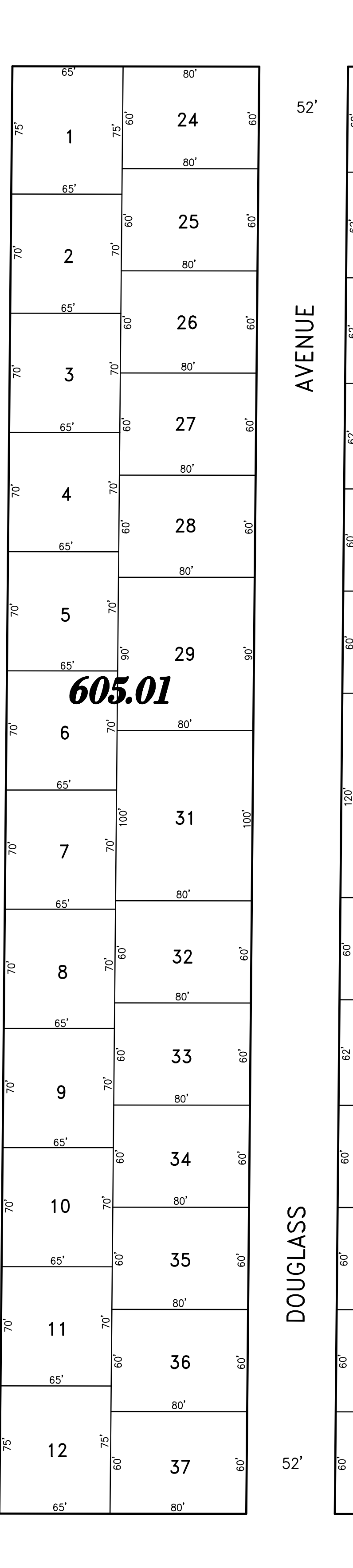
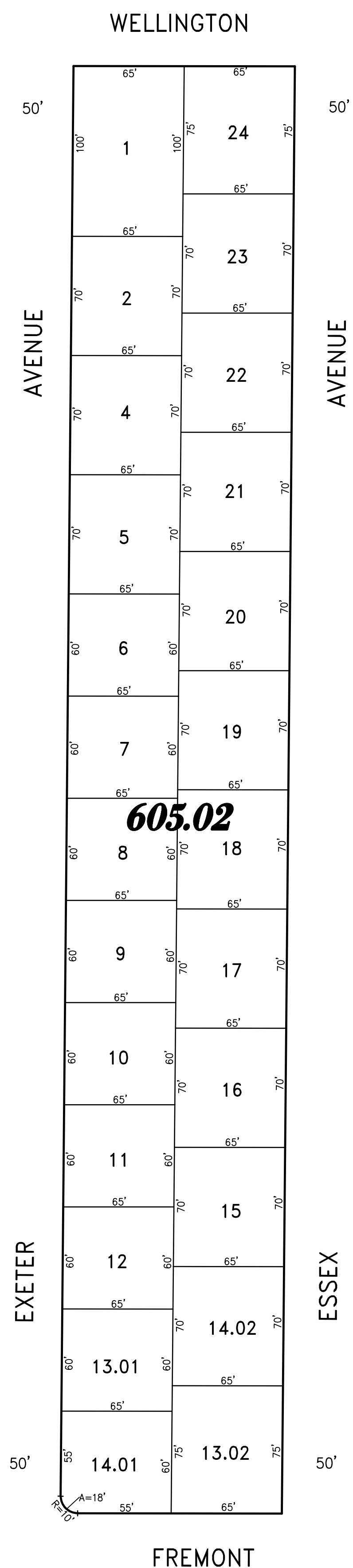
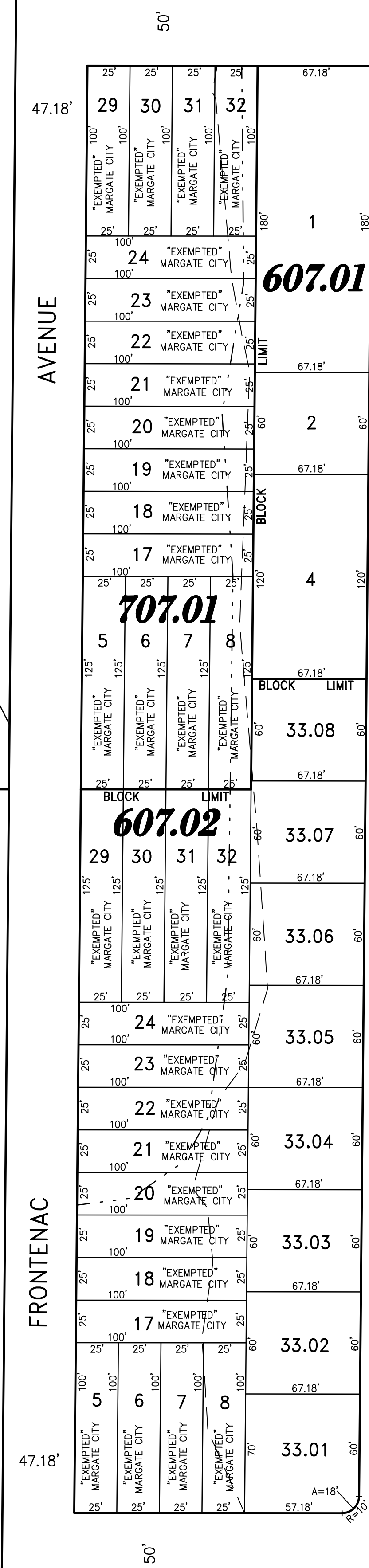
REVISIONS		
1-20-2015	CHARLES E. ADAMSON	42627



SHEET 14

SHEET 10

SHEET 15.01



CLARENDON AVENUE

BRUNSWICK DRIVE

BRUNSWICK DRIVE

BRUNSWICK DRIVE

"THIS TAX MAP PLATE HAS BEEN DIGITALLY DRAWN USING COMPUTER-AIDED DRAFTING/DESIGN (CADD) & COORDINATE GEOMETRY (COGO). IT IS BASED ON THE ORIGINAL DIGITALLY DRAWN TAX MAP PLATE BEARING THE OFFICIAL NEW JERSEY DIVISION TAXATION APPROVAL STAMP WITH APPROVAL DATE 6-3-2005 SERIAL NUMBER 846 AND SIGNATURES OF SIGNERS THOMAS J. REILLY, CHIEF, LOCAL PROPERTY FIELD ASSISTANCE, SANTO C. DIDONATO, SUPERVISING FIELD REPRESENTATIVE. THE ORIGINAL DIGITALLY DRAWN TAX MAP PLATE WITH THE OFFICIAL APPROVAL STAMP IS ON FILE WITH REMINGTON, VERNICK & WALBERG ENGINEERS."

### TAX MAP

### CITY OF MARGATE

ATLANTIC COUNTY NEW JERSEY  
SCALE: 1" = 50' DATE: 11-01-2003

CRAIG F. REMINGTON LAND SURVEYOR LIC. NO. 23924

REMINGTON, VERNICK & WALBERG ENGINEERS  
24 GA 28048700  
845 N. MAIN STREET, PLEASANTVILLE, NJ 08232  
(609) 645-7100, FAX (609) 645-7076  
WEB SITE ADDRESS: WWW.RVW.COM

SHEET 9