

REVISIONS		
4-13-2007	CRAIG F. REMINGTON	23924
8-31-2009	CRAIG F. REMINGTON	23924
4-24-2014	CRAIG F. REMINGTON	23924
1-20-2015	CHARLES E. ADAMSON	42627
1-30-2017	CHARLES E. ADAMSON	42627
3-17-2018	CHARLES E. ADAMSON	42627
1-29-2019	CHARLES E. ADAMSON	42627
2-26-2019	CHARLES E. ADAMSON	42627
3-03-2020	CHARLES E. ADAMSON	42627
4-1-2021	CHARLES E. ADAMSON	42627
3-24-2022	CHARLES E. ADAMSON	42627

TAX MAP CITY OF MARGATE

ATLANTIC COUNTY NEW JERSEY
SCALE: 1" = 100' DATE: 11-01-2003

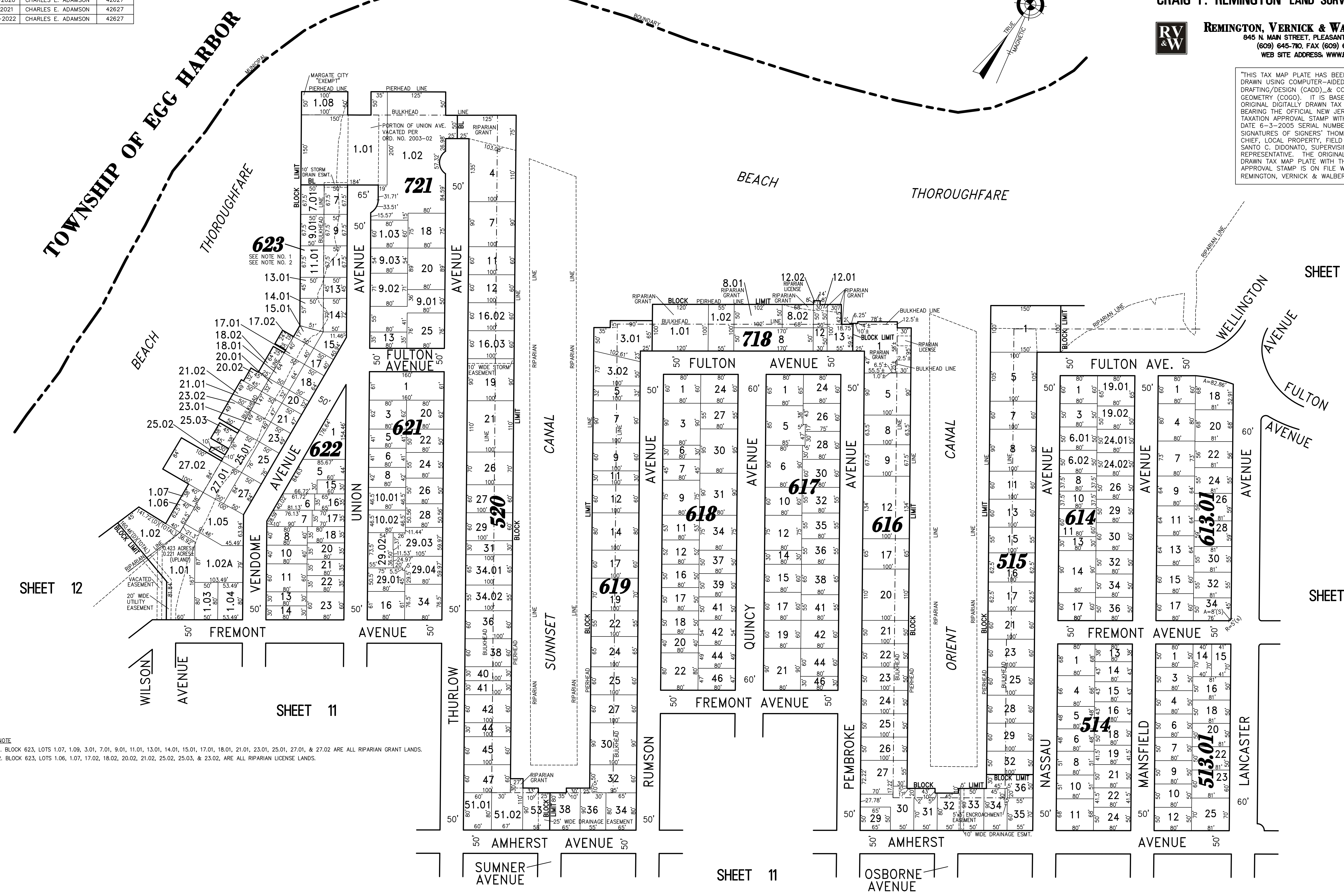
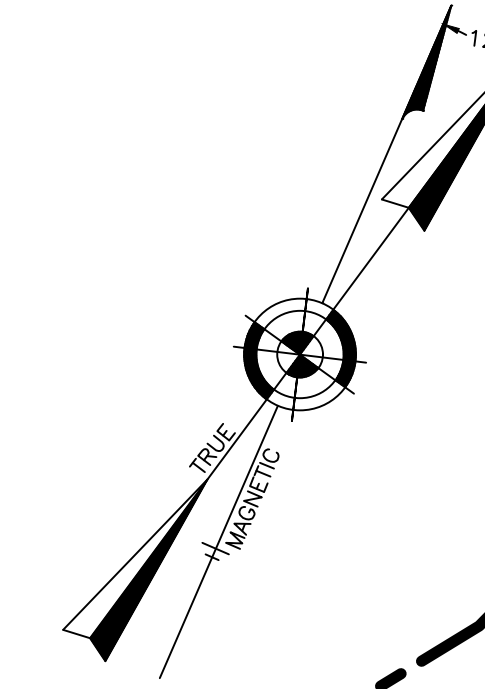
CRAIG F. REMINGTON LAND SURVEYOR LIC. NO. 23924



REMINGTON, VERNICK & WALBERG ENGINEERS
24 GA 28048700
845 N. MAIN STREET, PLEASANTVILLE, N.J. 08232
(609) 645-7100, FAX (609) 645-7076
WEB SITE ADDRESS: WWW.RVWE.COM

"THIS TAX MAP PLATE HAS BEEN DIGITALLY DRAWN USING COMPUTER-AIDED DRAFTING/DESIGN (CADD) & COORDINATE GEOMETRY (COGO). IT IS BASED ON THE ORIGINAL DIGITALLY DRAWN TAX MAP PLATE BEARING THE OFFICIAL NEW JERSEY DIVISION TAXATION APPROVAL STAMP WITH APPROVAL DATE 6-3-2003 SERIAL NUMBER 846 AND SIGNATURES OF SIGNERS' THOMAS J. REILLY, CHIEF, LOCAL PROPERTY, FIELD ASSISTANCE; SANTO C. DIDONATO, SUPERVISING FIELD REPRESENTATIVE. THE ORIGINAL DIGITALLY DRAWN TAX MAP PLATE WITH THE OFFICIAL APPROVAL STAMP IS ON FILE WITH REMINGTON, VERNICK & WALBERG ENGINEERS."

TOWNSHIP OF EGG HARBOR



SHEET 12

SHEET 11

SHEET 11

SHEET 14

SHEET 10

NOTE
1. BLOCK 623, LOTS 1.07, 1.09, 3.01, 7.01, 9.01, 11.01, 13.01, 14.01, 15.01, 17.01, 18.01, 21.01, 23.01, 25.01, 27.01, & 27.02 ARE ALL RIPARIAN GRANT LANDS.
2. BLOCK 623, LOTS 1.06, 1.07, 17.02, 18.02, 20.02, 21.02, 25.02, 25.03, & 23.02, ARE ALL RIPARIAN LICENSE LANDS.