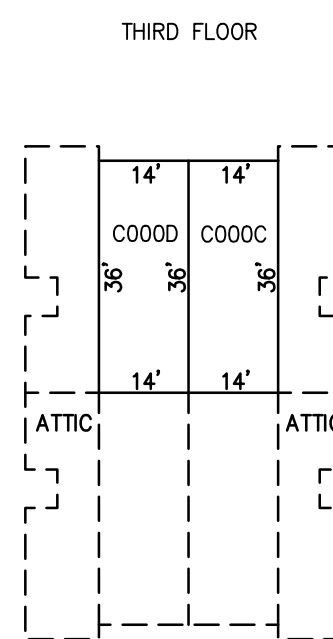
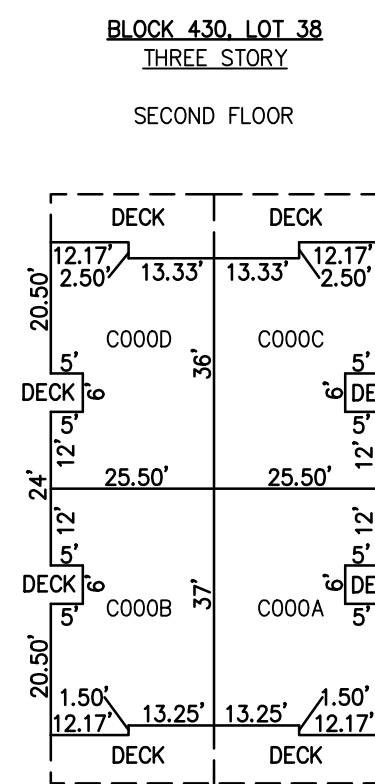
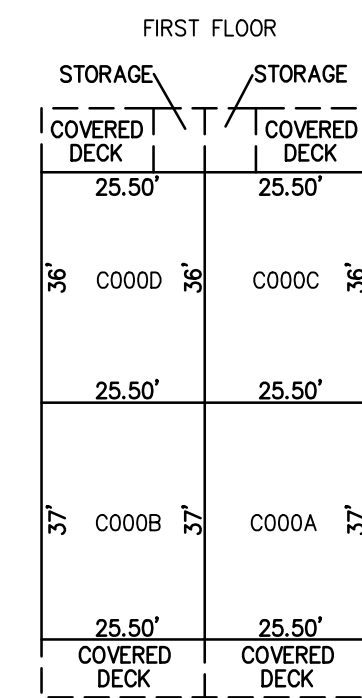
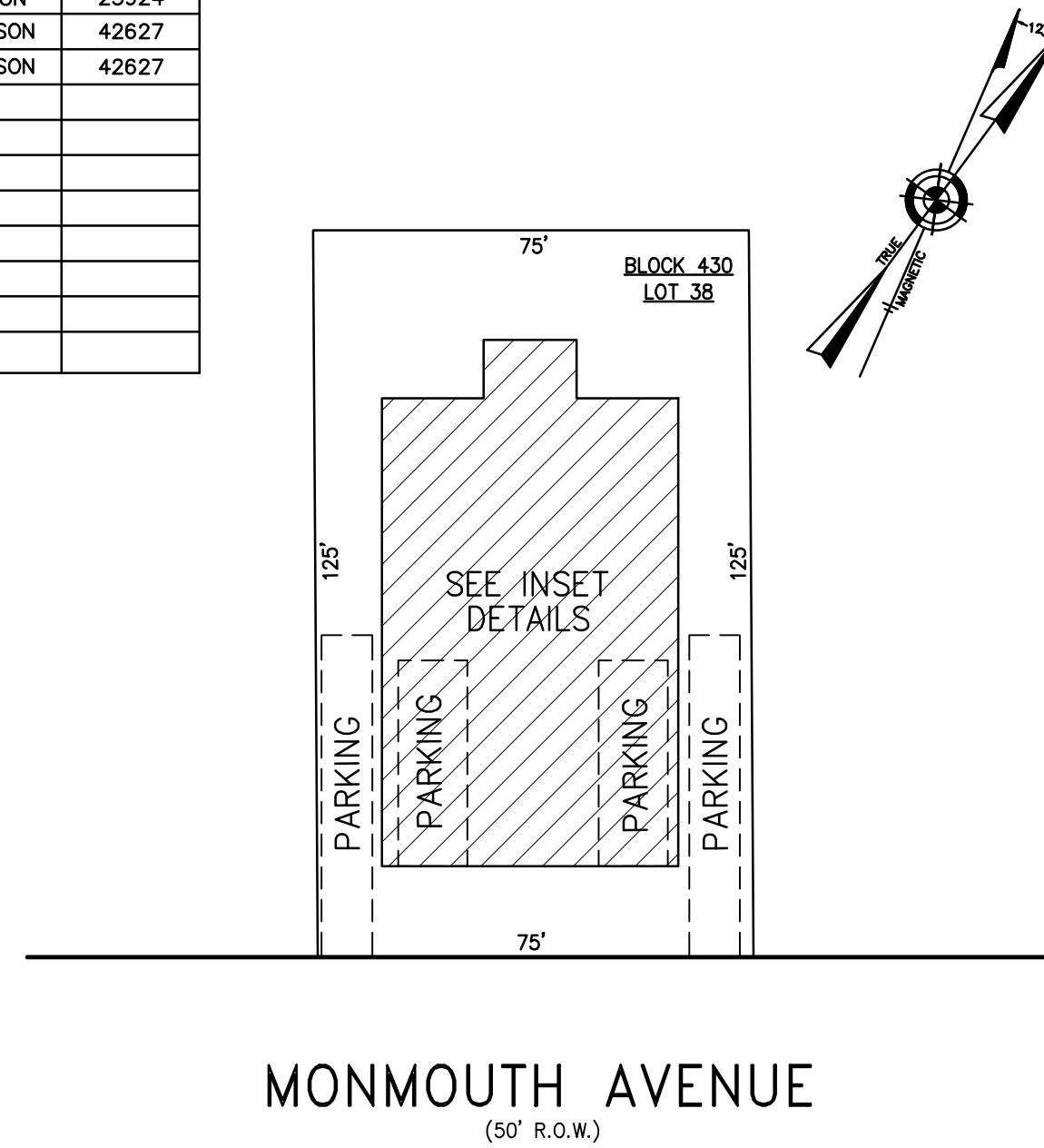


REVISIONS		
4-24-2014	CRAIG F. REMINGTON	23924
1-20-2015	CHARLES E. ADAMSON	42627
1-30-2017	CHARLES E. ADAMSON	42627

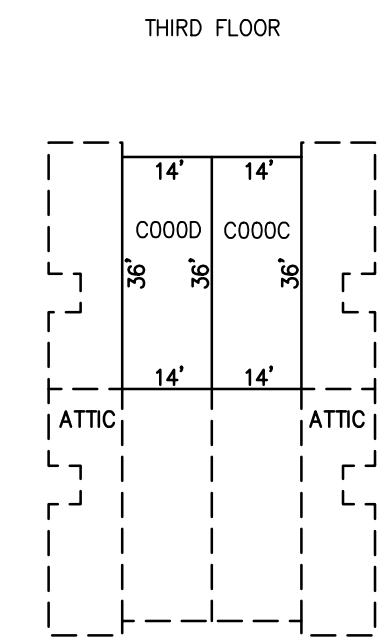
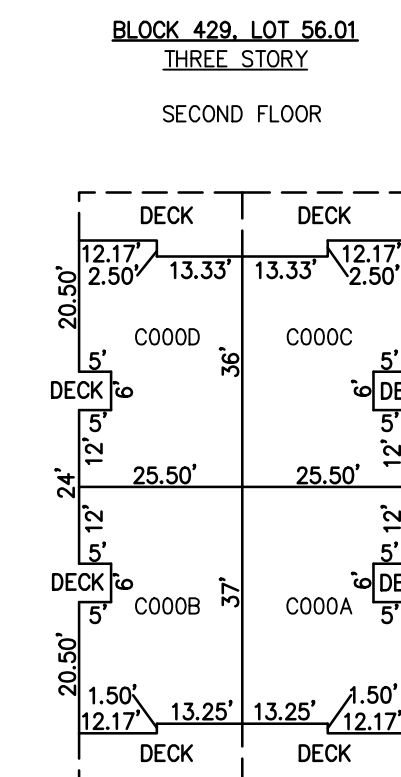
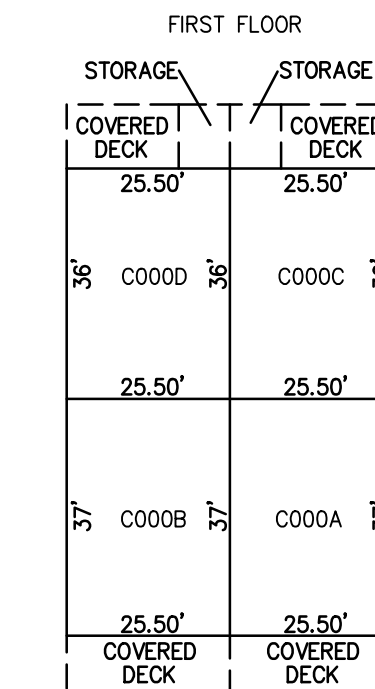
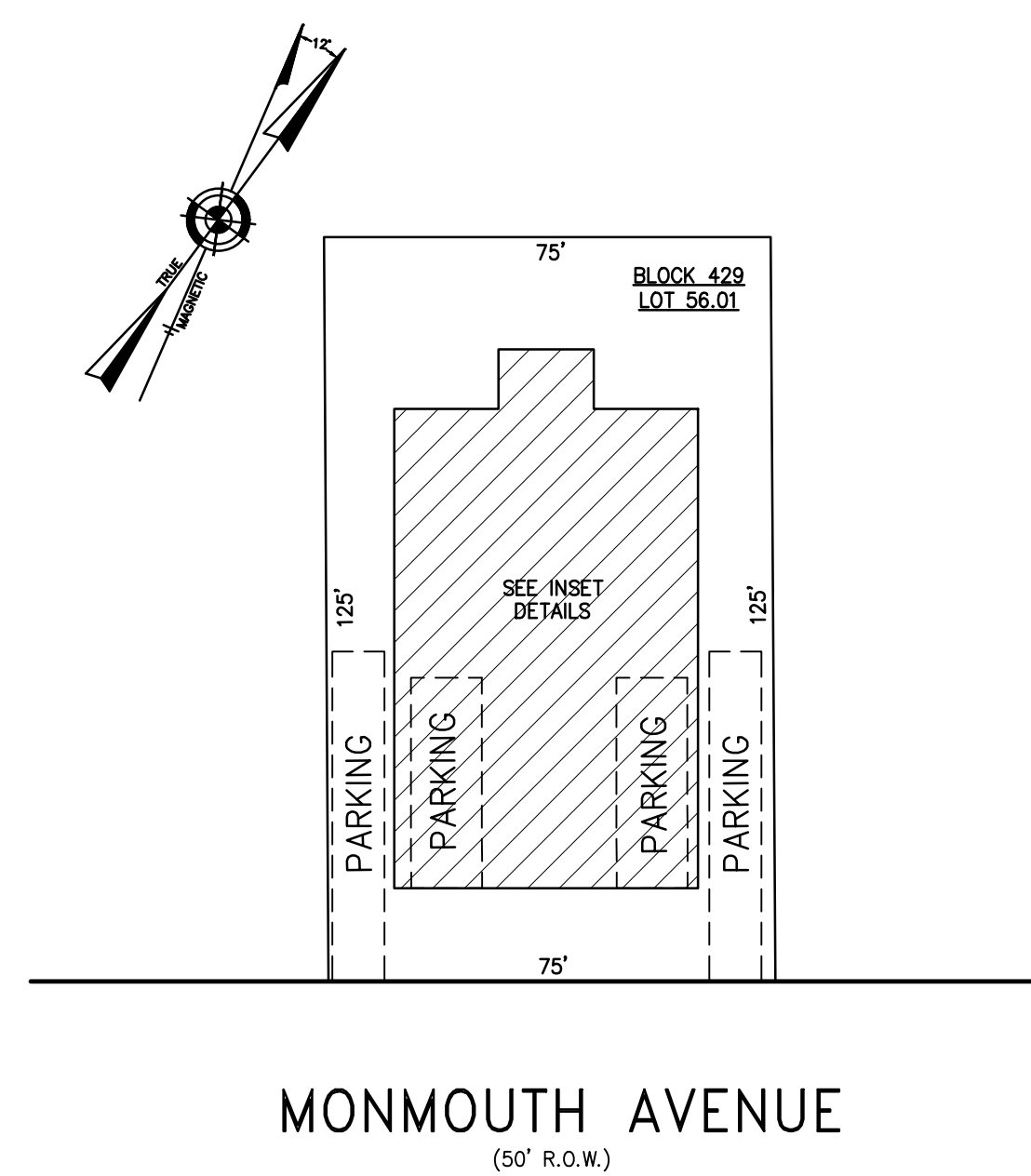


CONDO QUALIFIER	SQUARE FOOTAGE
C000A	1875 SF.
C000B	1875 SF.
C000C	2344 SF.
C000D	2344 SF.

**DETAILS**  
SCALE: 1"=30'

**PLAN**  
SCALE: 1"=30'

**BLOCK 430, LOT 38**  
**9607 MONMOUTH AVENUE CONDOMINIUM**  
**9607 MONMOUTH AVENUE**  
**INSET "40"**

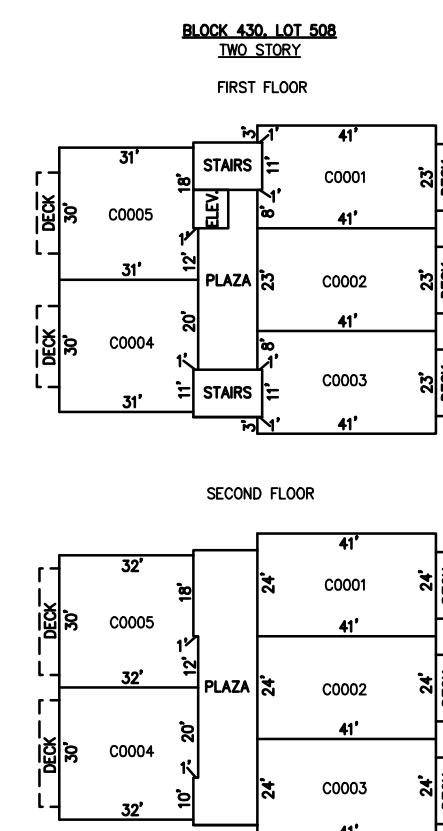
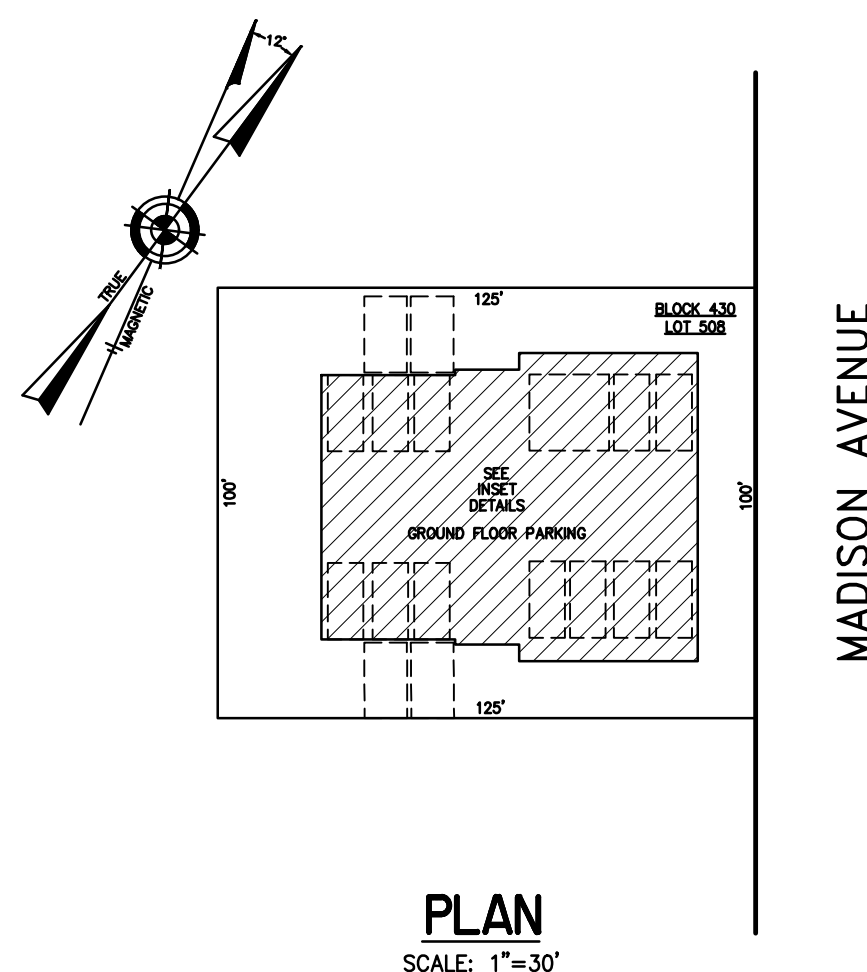


CONDO QUALIFIER	SQUARE FOOTAGE
C000A	1875 SF.
C000B	1875 SF.
C000C	2344 SF.
C000D	2344 SF.

**DETAILS**  
SCALE: 1"=30'

**PLAN**  
SCALE: 1"=30'

**BLOCK 429, LOT 56.01**  
**9505 MONMOUTH AVENUE CONDOMINIUM**  
**9505 MONMOUTH AVENUE**  
**INSET "4P"**

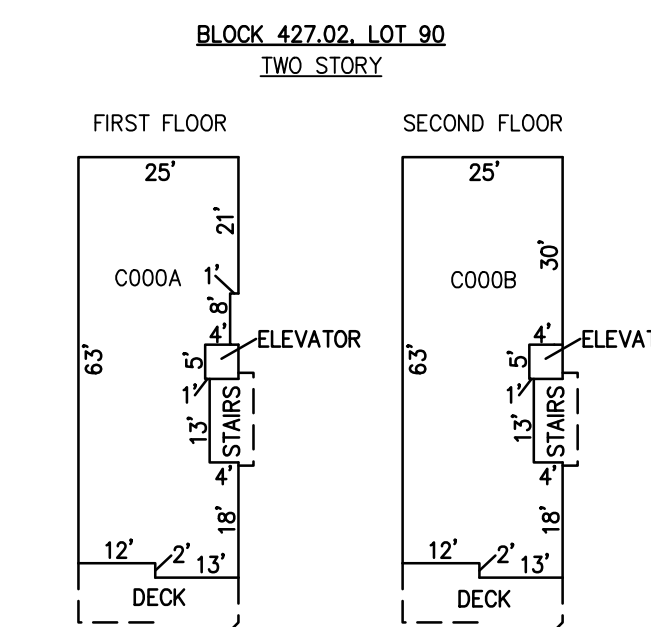
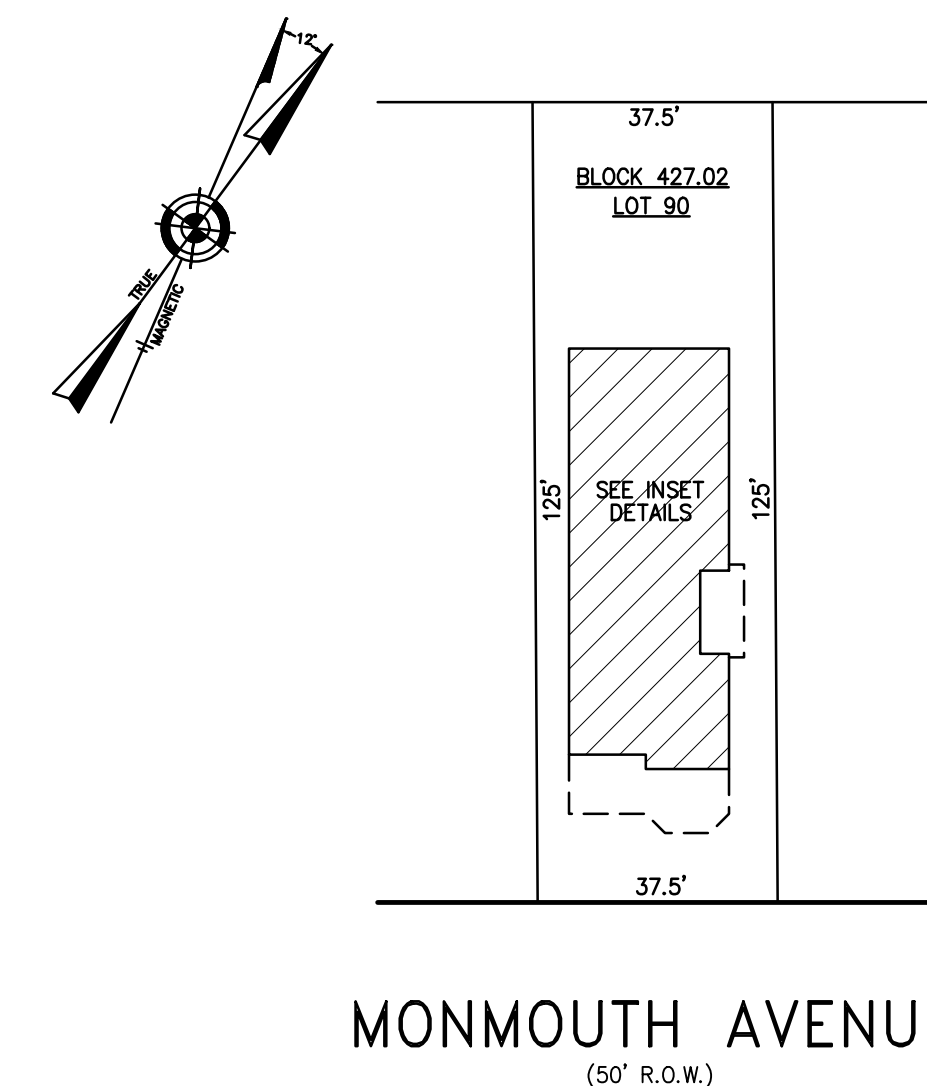


CONDO QUALIFIER	SQUARE FOOTAGE
C0001	1932 SF.
C0002	1900 SF.
C0003	1932 SF.
C0004	1950 SF.
C0005	1950 SF.

**DETAILS**  
SCALE: 1"=30'

**PLAN**  
SCALE: 1"=30'

**BLOCK 430, LOT 508**  
**MADISON VIEWS CONDOMINIUM**  
**210 NORTH MADISON AVENUE**  
**INSET "4Q"**



CONDO QUALIFIER	SQUARE FOOTAGE
C000A	1518 SF.
C000B	1518 SF.

**DETAILS**  
SCALE: 1"=30'

**PLAN**  
SCALE: 1"=30'

**BLOCK 427.02, LOT 90**  
**9315 MONMOUTH AVENUE CONDOMINIUM**  
**9315 MONMOUTH AVENUE**  
**INSET "4R"**

**CONDOMINIUM DETAILS AND DIMENSIONS**  
**BLOCK 427.02, LOT 90**  
**BLOCK 429, LOT 56.01**  
**BLOCK 430, LOT 38**  
**BLOCK 430, LOT 508**  
**SEE PLATE 12**

"THIS TAX MAP PLATE HAS BEEN DIGITALLY DRAWN USING COMPUTER-AIDED DRAFTING/DESIGN (CADD) & COORDINATE GEOMETRY (COGO). IT IS BASED ON THE ORIGINAL DIGITALLY DRAWN TAX MAP PLATE BEARING THE OFFICIAL NEW JERSEY DIVISION TAXATION APPROVAL STAMP WITH APPROVAL DATE 6-5-2005 SERIAL NUMBER 846 AND SIGNATURES OF SIGNERS' THOMAS J. REILLY, CHIEF, LOCAL PROPERTY, FIELD ASSISTANCE. SANTO C. DIDONATO, SUPERVISING FIELD REPRESENTATIVE. THE ORIGINAL DIGITALLY DRAWN TAX MAP PLATE WITH THE OFFICIAL APPROVAL STAMP IS ON FILE WITH REMINGTON, VERNICK & WALBERG ENGINEERS."

**TAX MAP**  
**CITY OF MARGATE**

ATLANTIC COUNTY NEW JERSEY  
SCALE: AS NOTED DATE: 1-30-2004

**CRAIG F. REMINGTON LAND SURVEYOR LIC. NO. 23924**



**REMINGTON, VERNICK & WALBERG ENGINEERS**  
24 GA 28048700  
845 N. MAIN STREET, PLEASANTVILLE, N.J. 08232  
(609) 645-700, FAX (609) 645-7076  
WEB SITE ADDRESS: WWW.RVE.COM