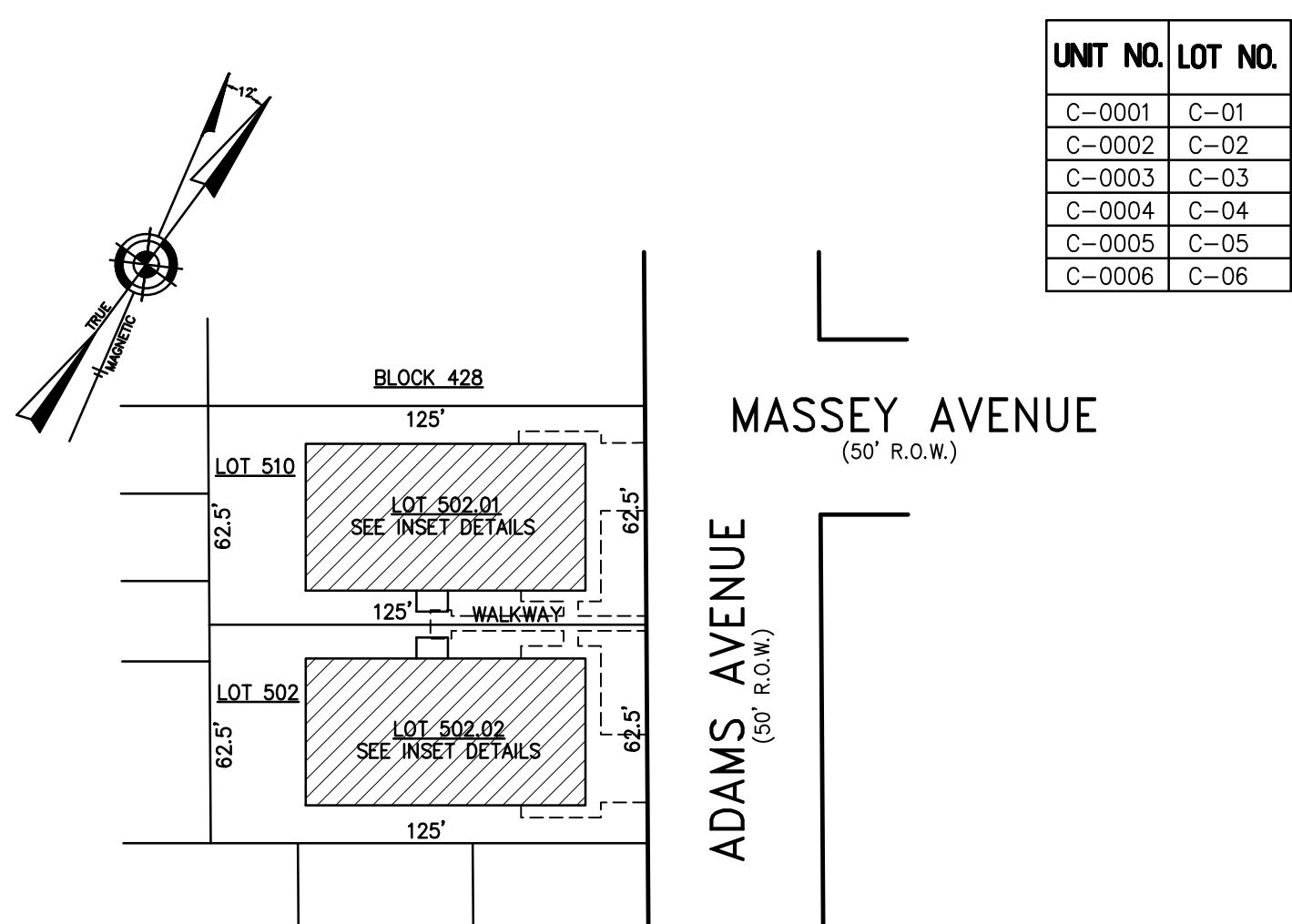
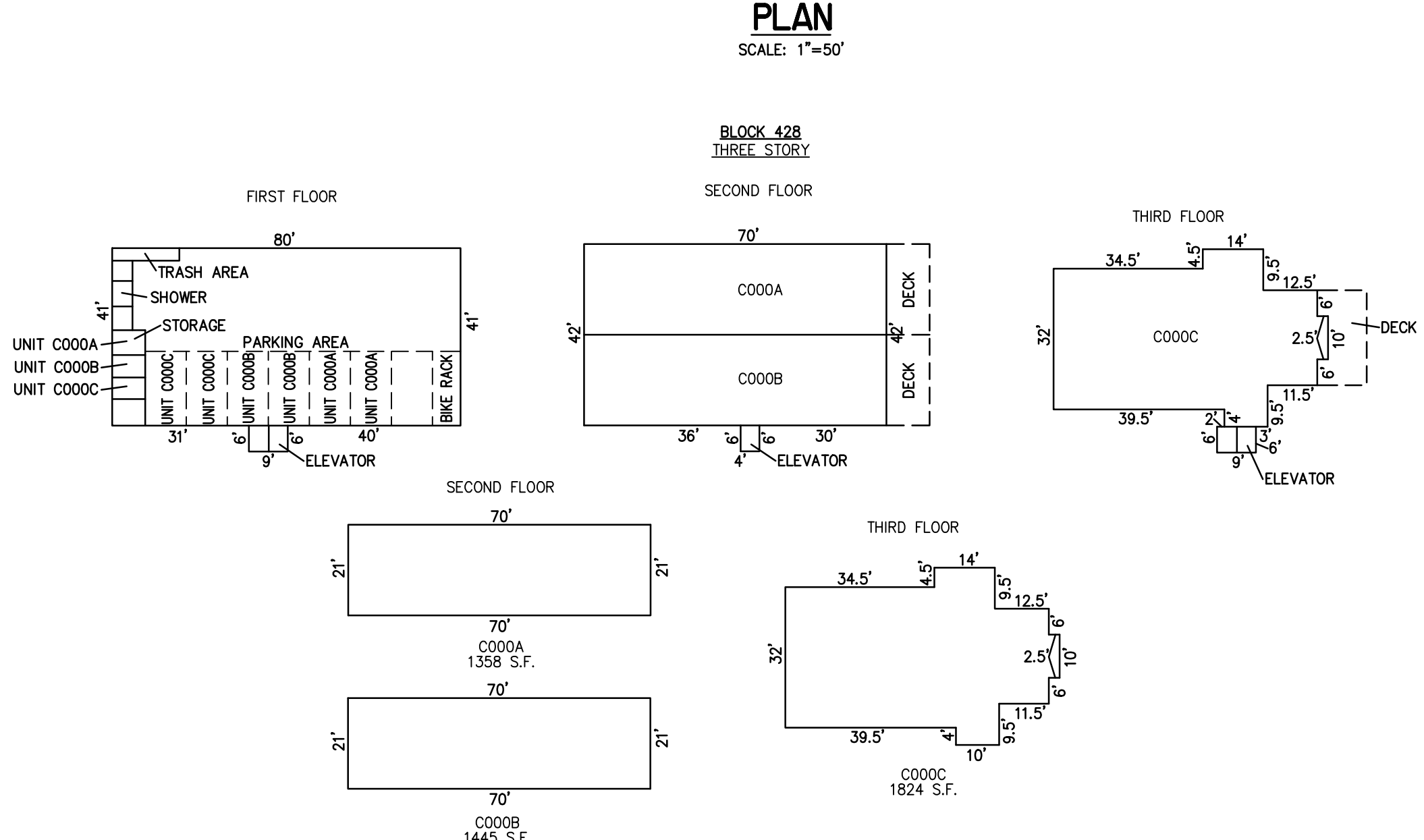


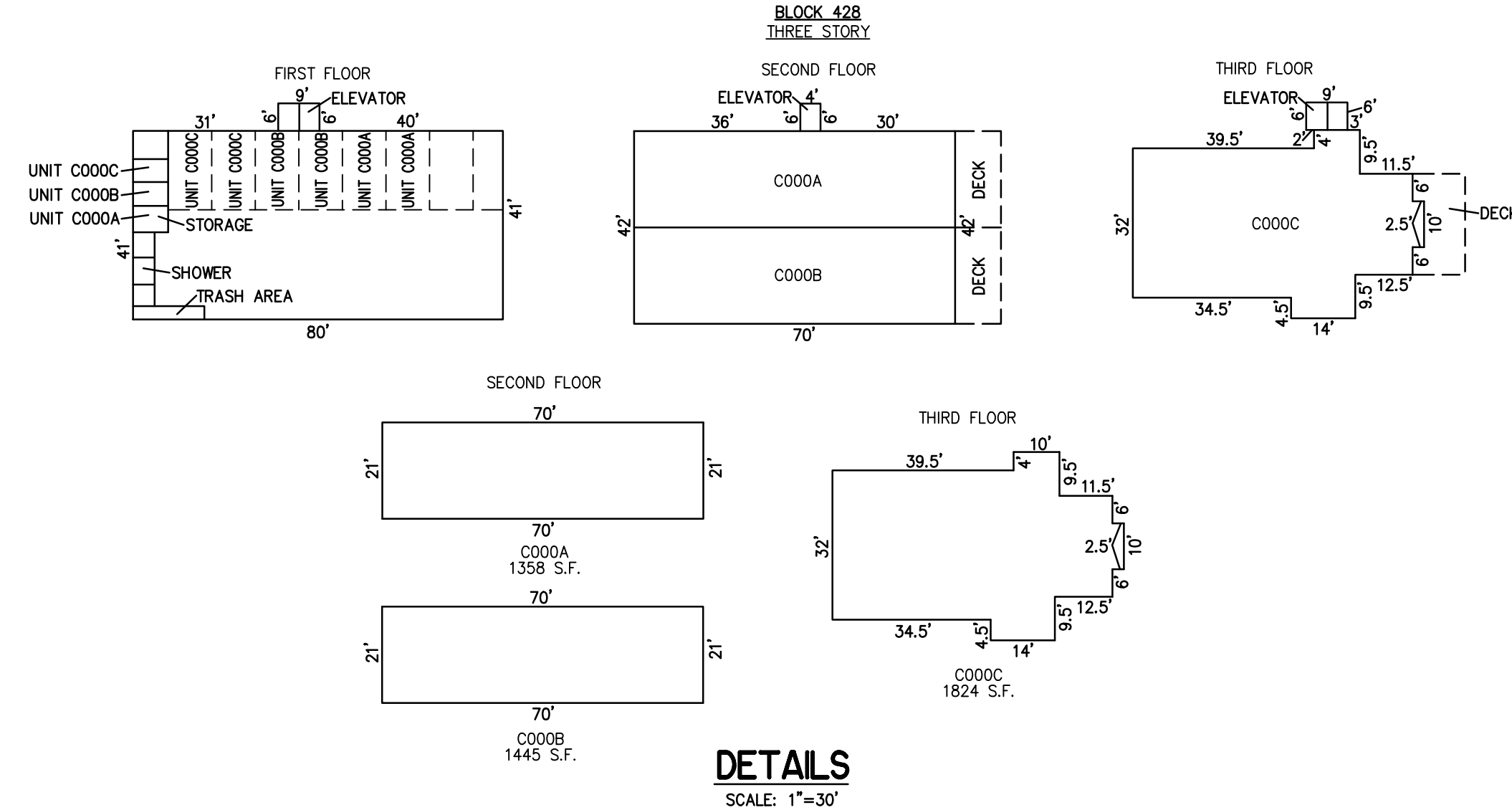
REVISIONS		
4-13-2007	CRAIG F. REMINGTON	23924



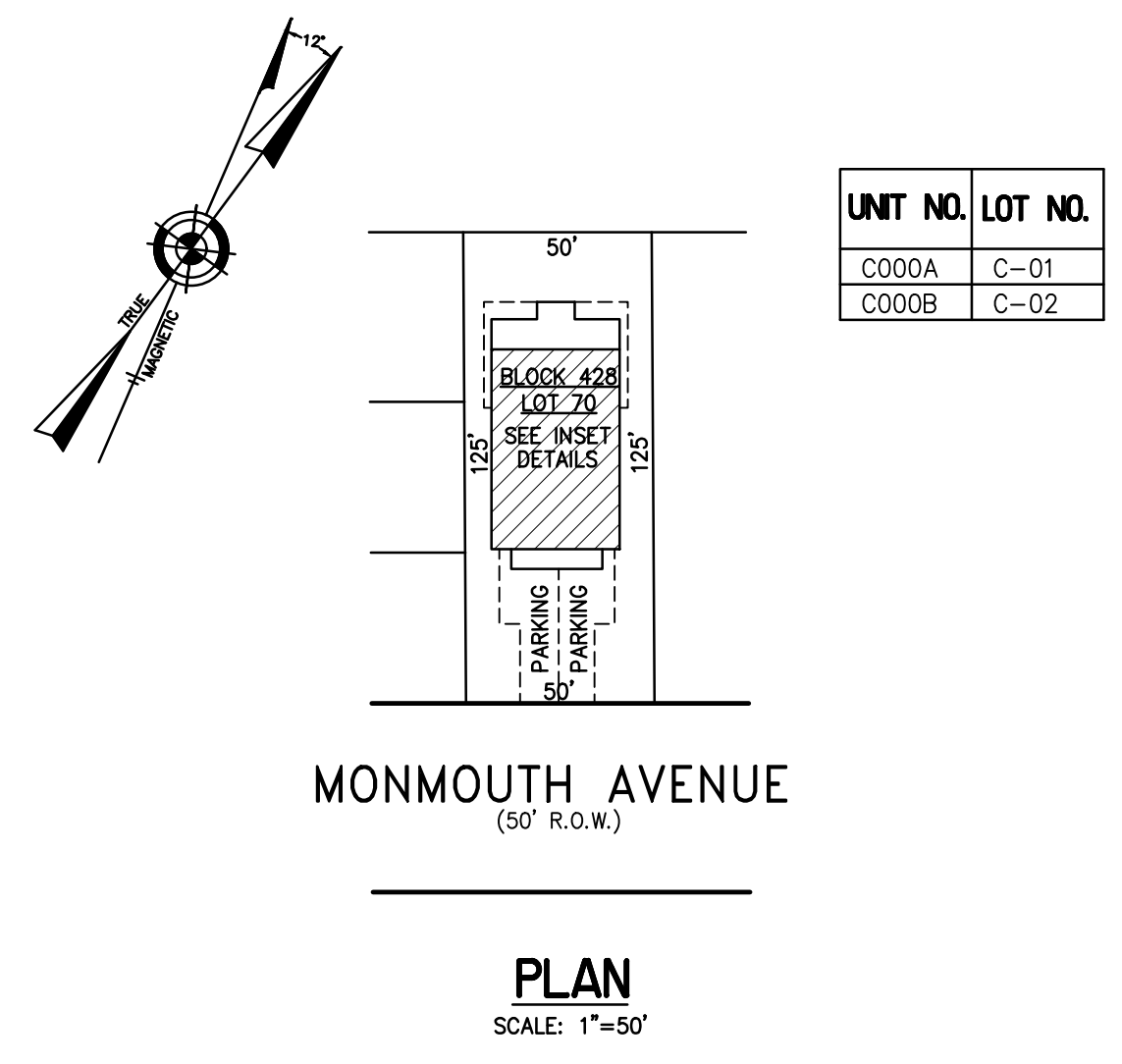
UNIT NO.	LOT NO.
C-0001	C-01
C-0002	C-02
C-0003	C-03
C-0004	C-04
C-0005	C-05
C-0006	C-06



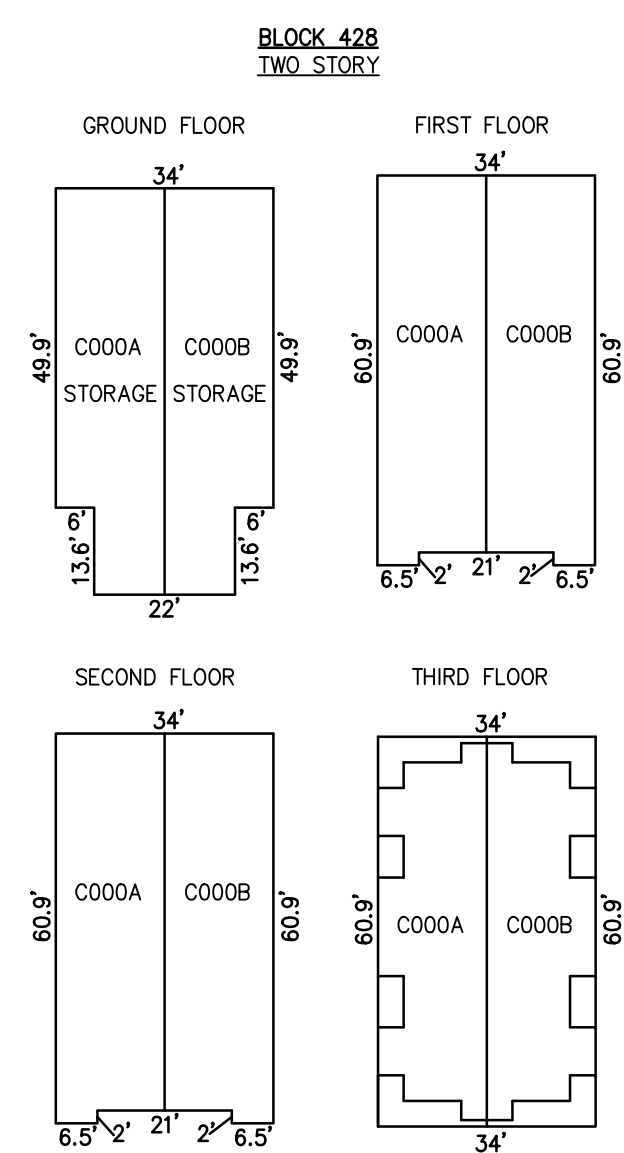
BLOCK 428, LOTS 502 & 502.02
BAY WALK CONDOMINIUM
206 NORTH ADAMS AVENUE



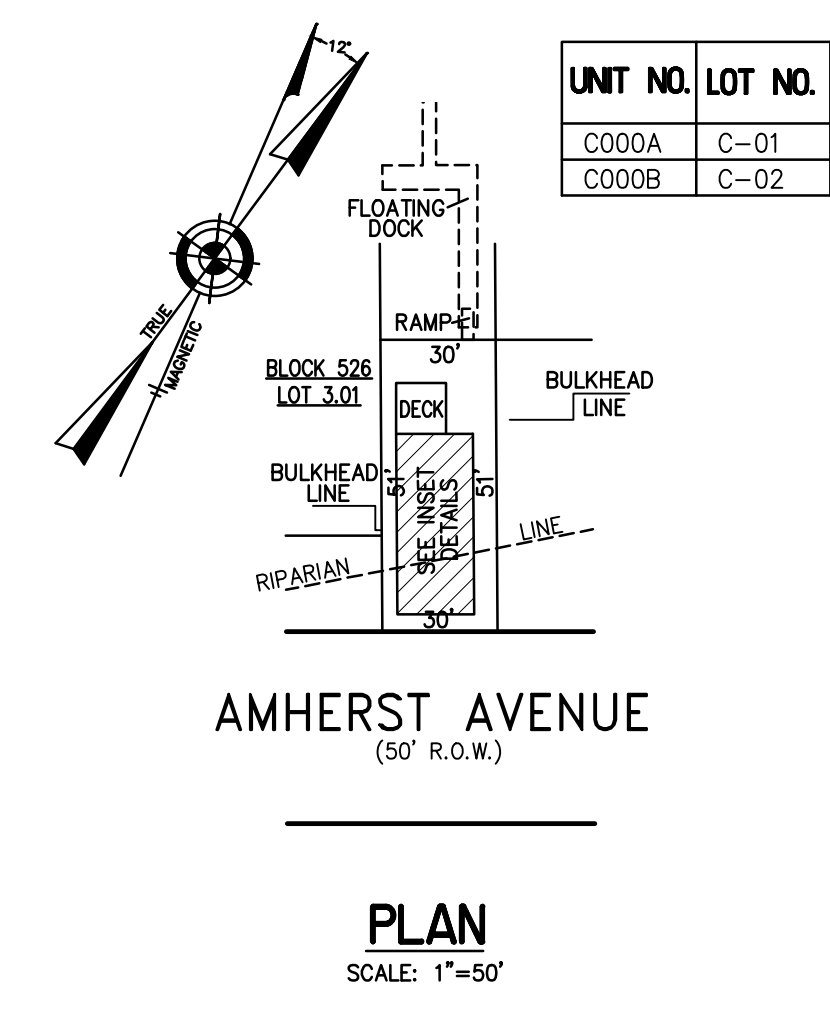
BLOCK 428, LOTS 510 & 502.01
BAY WALK CONDOMINIUM
212 NORTH ADAMS AVENUE
INSET "2T"



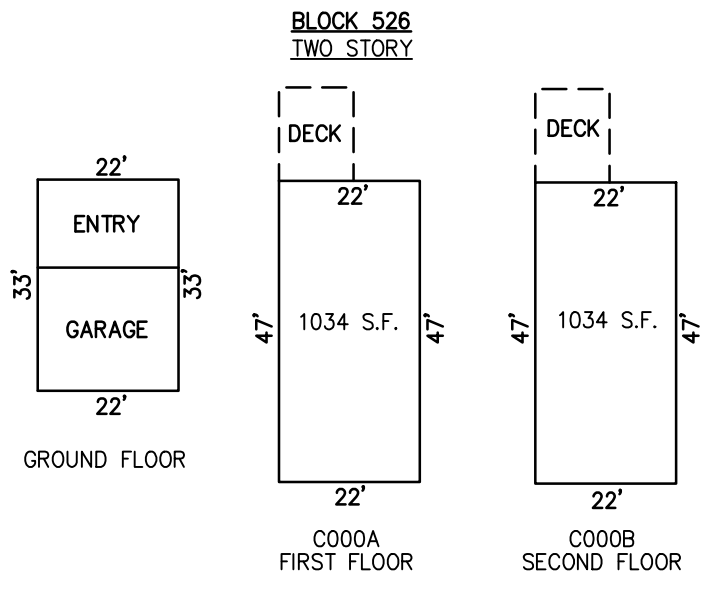
UNIT NO.	LOT NO.
C000A	C-01
C000B	C-02



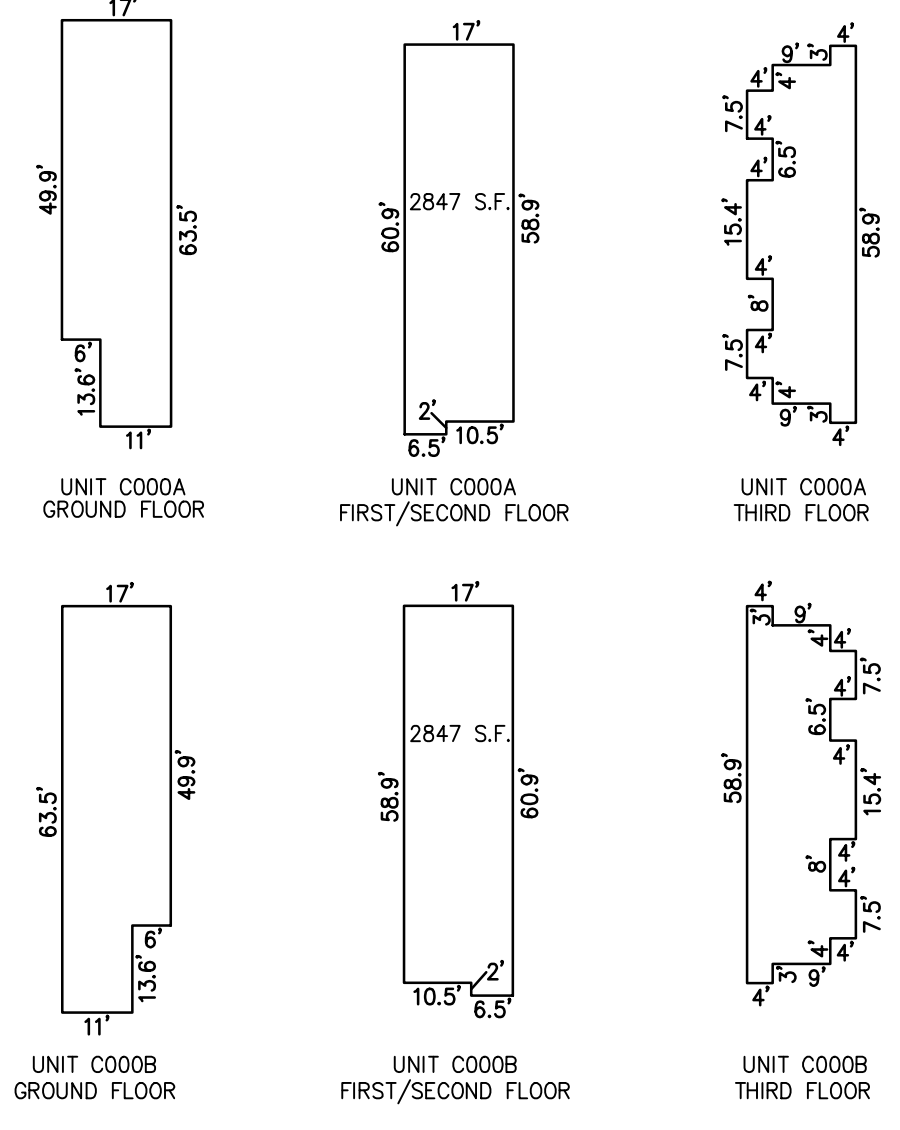
BLOCK 428, LOT 70
CASABLANCE CONDOMINIUM
9415 MONMOUTH AVENUE
INSET "2U"



UNIT NO.	LOT NO.
C000A	C-01
C000B	C-02



BLOCK 526, LOT 3.01
THOROFARE VIEW CONDOMINIUM
9213 AMHERST AVENUE
INSET "2V"



CONDOMINIUM DETAILS AND DIMENSIONS
BLOCK 428, LOT 502
BLOCK 428, LOT 70
BLOCK 526, LOT 3.01
SEE PLATE 12

"THIS TAX MAP PLATE HAS BEEN DIGITALLY DRAWN USING COMPUTER-AIDED DRAFTING/DESIGN (CADD) & COORDINATE GEOMETRY (COGO). IT IS BASED ON THE ORIGINAL DIGITALLY DRAWN TAX MAP PLATE BEARING THE OFFICIAL NEW JERSEY DIVISION TAXATION APPROVAL STAMP WITH APPROVAL DATE 6-3-2005 SERIAL NUMBER 846 AND SIGNATURES OF SIGNERS' THOMAS J. REILLY, CHIEF, LOCAL PROPERTY, FIELD ASSISTANCE. SANTO C. DIDONATO, SUPERVISING FIELD REPRESENTATIVE. THE ORIGINAL DIGITALLY DRAWN TAX MAP PLATE WITH THE OFFICIAL APPROVAL STAMP IS ON FILE WITH REMINGTON, VERNICK & WALBERG ENGINEERS."

TAX MAP
CITY OF MARGATE

ATLANTIC COUNTY NEW JERSEY
SCALE: AS NOTED DATE: 1-30-2004

CRAIG F. REMINGTON LAND SURVEYOR LIC. NO. 23924



REMINGTON, VERNICK & WALBERG ENGINEERS
24 GA 28048700
845 N. MAIN STREET, PLEASANTVILLE, NJ 08232
(609) 645-710, FAX (609) 645-7076
WEB SITE ADDRESS: WWW.RVW.COM