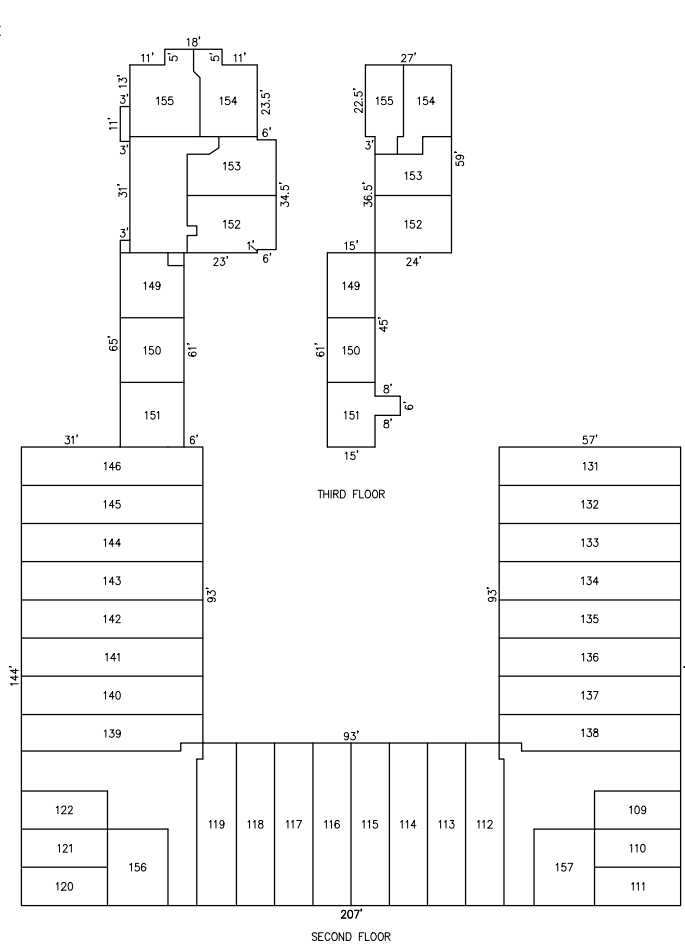
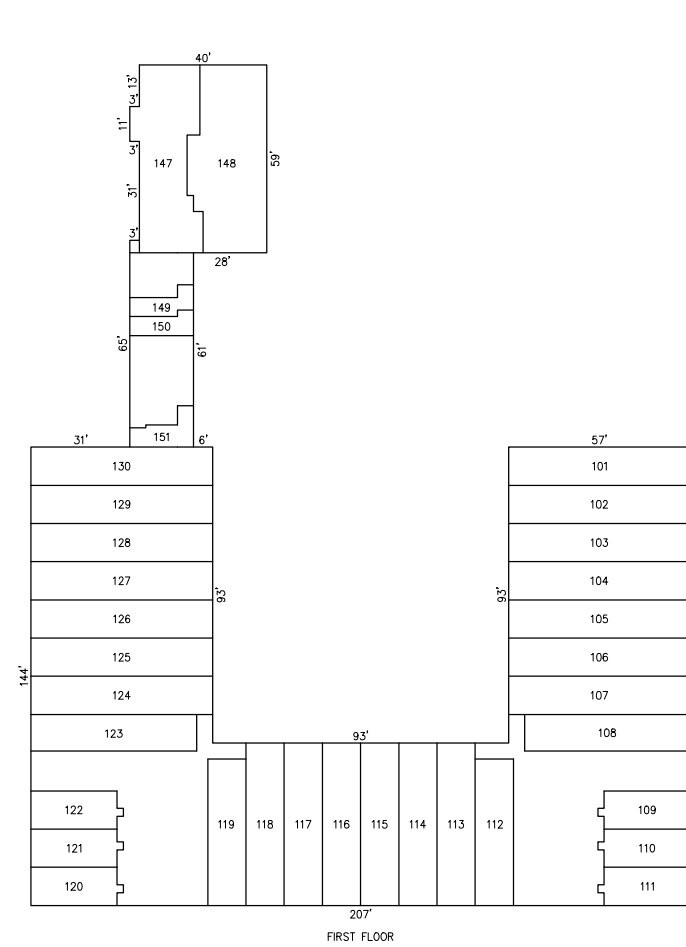
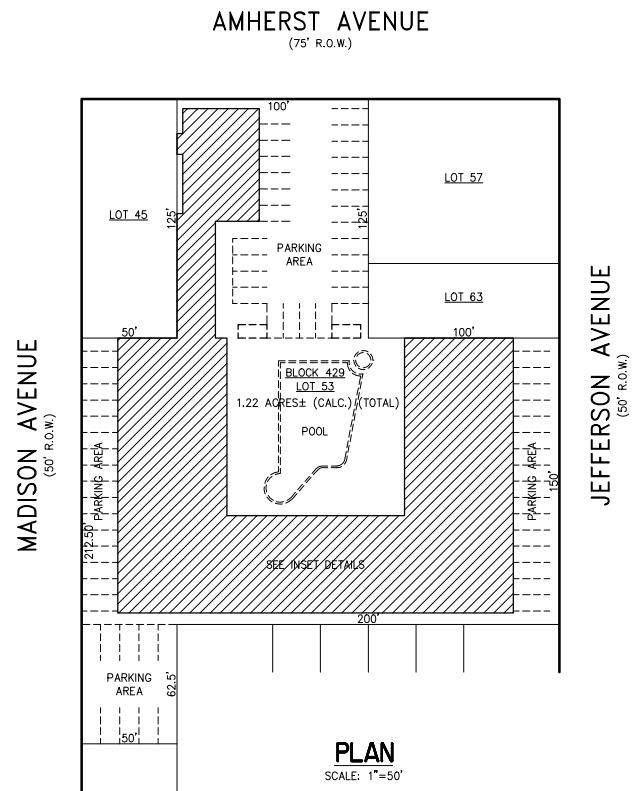
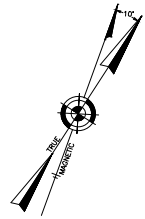
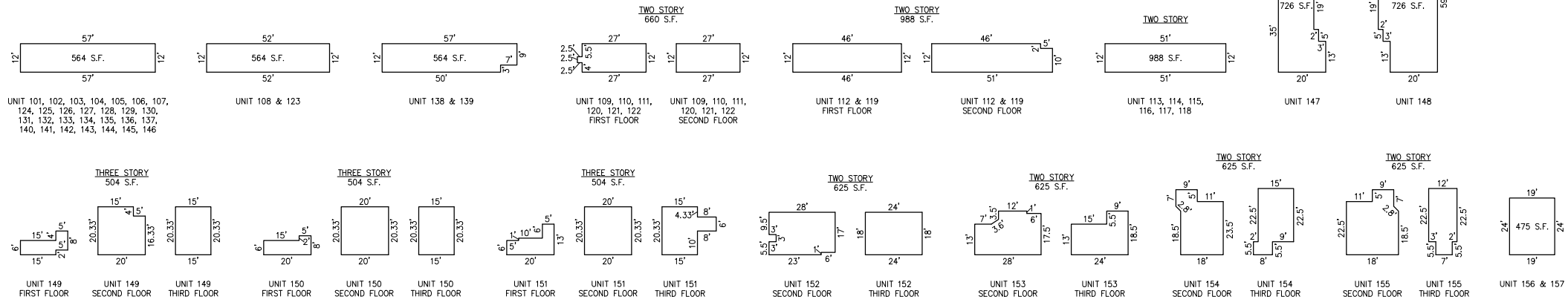


REVISIONS	



**DETAILS**  
SCALE: 1"=30'



NOTE: DIMENSIONS AND SQUARE FOOTAGE ARE TYPICAL FOR SIMILAR UNITS  
**DETAILS**  
SCALE: 1"=30'

**BLOCK 429, LOT 53**  
**MARGATE MARINER CONDOMINIUM**  
**9510 AMHERST AVENUE**  
**INSET "FFFF"**

**CONDOMINIUM DETAILS AND DIMENSIONS**  
**BLOCK 429, LOT 53**  
**SEE PLATE 12**

UNIT NO.	LOT NO.
UNIT 101	C-53.101
UNIT 102	C-53.102
UNIT 103	C-53.103
UNIT 104	C-53.104
UNIT 105	C-53.105
UNIT 106	C-53.106
UNIT 107	C-53.107
UNIT 108	C-53.108
UNIT 109	C-53.109
UNIT 110	C-53.110
UNIT 111	C-53.111
UNIT 112	C-53.112
UNIT 113	C-53.113
UNIT 114	C-53.114
UNIT 115	C-53.115
UNIT 116	C-53.116
UNIT 117	C-53.117
UNIT 118	C-53.118
UNIT 119	C-53.119
UNIT 120	C-53.120
UNIT 121	C-53.121
UNIT 122	C-53.122
UNIT 123	C-53.123
UNIT 124	C-53.124
UNIT 125	C-53.125
UNIT 126	C-53.126
UNIT 127	C-53.127
UNIT 128	C-53.128
UNIT 129	C-53.129
UNIT 130	C-53.130
UNIT 131	C-53.131
UNIT 132	C-53.132
UNIT 133	C-53.133
UNIT 134	C-53.134
UNIT 135	C-53.135
UNIT 136	C-53.136
UNIT 137	C-53.137
UNIT 138	C-53.138
UNIT 139	C-53.139
UNIT 140	C-53.140
UNIT 141	C-53.141
UNIT 142	C-53.142
UNIT 143	C-53.143
UNIT 144	C-53.144
UNIT 145	C-53.145
UNIT 146	C-53.146
UNIT 147	C-53.147
UNIT 148	C-53.148
UNIT 149	C-53.149
UNIT 150	C-53.150
UNIT 151	C-53.151
UNIT 152	C-53.152
UNIT 153	C-53.153
UNIT 154	C-53.154
UNIT 155	C-53.155
UNIT 156	C-53.156
UNIT 157	C-53.157
UNIT 158	C-53.158
UNIT 159	C-53.159
UNIT 160	C-53.160
UNIT 161	C-53.161

"THIS TAX MAP PLATE HAS BEEN DIGITALLY DRAWN USING COMPUTER-AIDED DRAFTING/DESIGN (CADD) & COORDINATE GEOMETRY (COGO). IT IS BASED ON THE ORIGINAL DIGITALLY DRAWN TAX MAP PLATE BEARING THE OFFICIAL NEW JERSEY DIVISION TAXATION APPROVAL STAMP WITH APPROVAL DATE: 6-3-2005 SERIAL NUMBER 846 AND SIGNATURES OF SIGNERS: THOMAS J. REILLY, CHIEF, LOCAL PROPERTY, FIELD ASSISTANCE; SANTO C. DIDONATO, SUPERVISING FIELD REPRESENTATIVE. THE ORIGINAL DIGITALLY DRAWN TAX MAP PLATE WITH THE OFFICIAL APPROVAL STAMP IS ON FILE WITH REMINGTON, VERNICK & WALBERG ENGINEERS."

**TAX MAP**  
**CITY OF MARGATE**

ATLANTIC COUNTY NEW JERSEY  
SCALE: AS NOTED DATE: 1-30-2004  
**CRAIG F. REMINGTON LAND SURVEYOR LIC. NO. 23924**

**REMINGTON, VERNICK & WALBERG ENGINEERS**  
24 GA 28048700  
845 N. MAN STREET, PLEASANTVILLE, N.J. 08232  
(609) 645-7100, FAX (609) 645-7076  
WEB SITE ADDRESS: WWW.RVW.COM