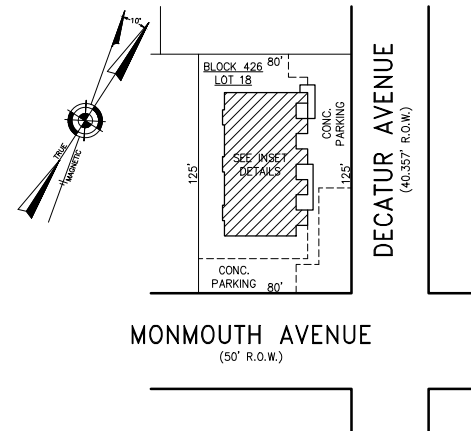
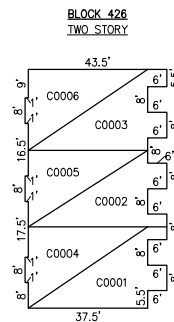


NO.	DESCRIPTION	DATE

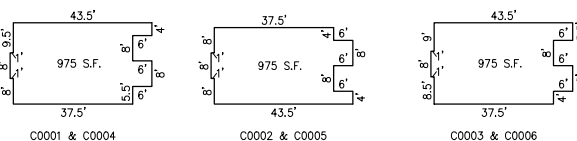


PLAN
SCALE: 1"=50'

**BLOCK 426, LOT 18
DECATUR CONDOMINIUM
200 NORTH DECATUR AVENUE
INSET "BBBB"**

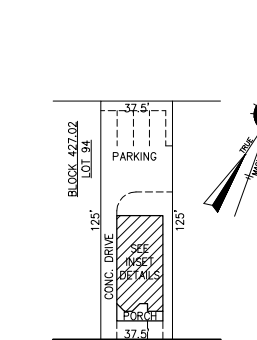


UNIT NO.	LOT NO.
C0001	C-01
C0002	C-02
C0003	C-03
C0004	C-04
C0005	C-05
C0006	C-06



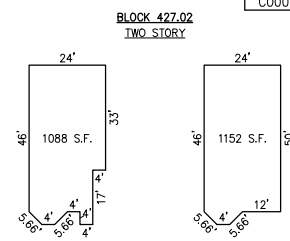
DETAILS
SCALE: 1"=30'

NOTE: DIMENSIONS AND SQUARE FOOTAGE ARE TYPICAL FOR FIRST AND SECOND FLOOR



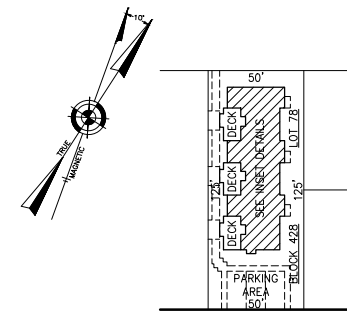
PLAN
SCALE: 1"=50'

**BLOCK 427.02, LOT 94
931 CONDOMINIUM
931 MONMOUTH AVENUE
INSET "CCCC"**



DETAILS
SCALE: 1"=30'

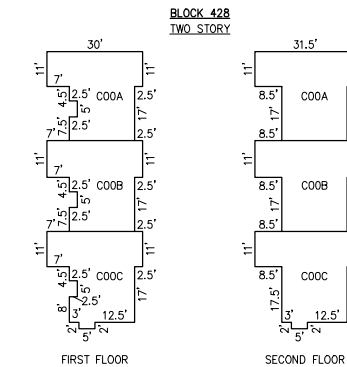
NOTE: UNIT NUMBERS ARE ALSO LOT NUMBERS



PLAN
SCALE: 1"=50'

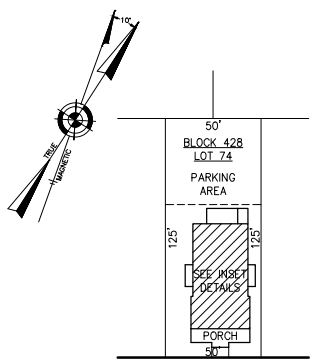
**BLOCK 428, LOT 78
CARA CONDOMINIUM
9409 MONMOUTH AVENUE
INSET "EEEE"**

UNIT NO.	LOT NO.
C00A	C-01
C00B	C-02
C00C	C-03



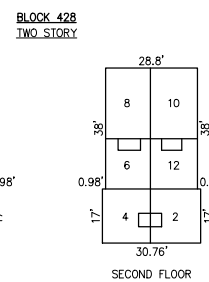
DETAILS
SCALE: 1"=30'

NOTE: UNIT NUMBERS ARE ALSO LOT NUMBERS



PLAN
SCALE: 1"=50'

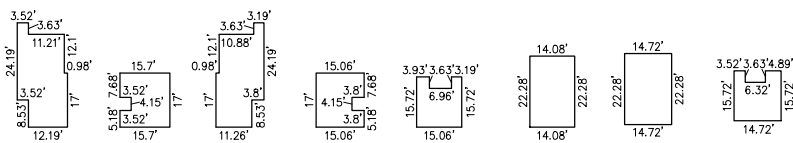
**BLOCK 428, LOT 74
MONMOUTH CONDOMINIUM
941 MONMOUTH AVENUE
INSET "DDDD"**



DETAILS
SCALE: 1"=30'

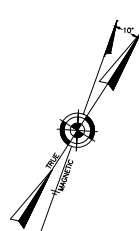
NOTE: UNIT NUMBERS ARE ALSO LOT NUMBERS

UNIT NO.	LOT NO.
UNIT 1	C-74.01
UNIT 2	C-74.02
UNIT 3	C-74.03
UNIT 4	C-74.04
UNIT 5	C-74.05
UNIT 6	C-74.06
UNIT 7	C-74.07
UNIT 8	C-74.08
UNIT 9	C-74.09
UNIT 10	C-74.10
UNIT 12	C-74.11



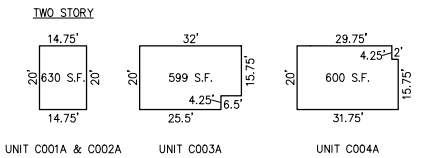
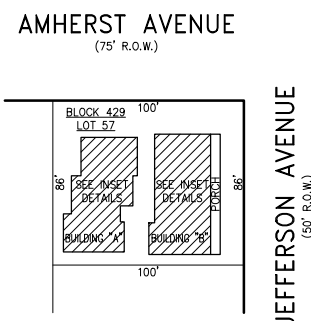
DETAILS
SCALE: 1"=30'

NOTE: DIMENSIONS AND SQUARE FOOTAGE ARE TYPICAL FOR SIMILAR UNITS



PLAN
SCALE: 1"=50'

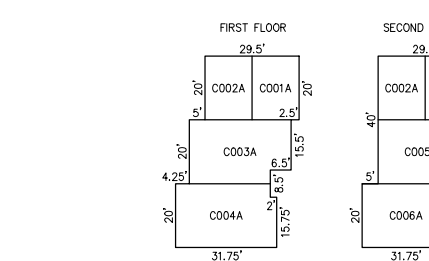
**CONDOMINIUM DETAILS AND DIMENSIONS
BLOCK 426, LOT 18
BLOCK 427.02, LOT 94
BLOCK 428, LOT 74
BLOCK 428, LOT 78
BLOCK 429, LOT 57
SEE PLATE 12**



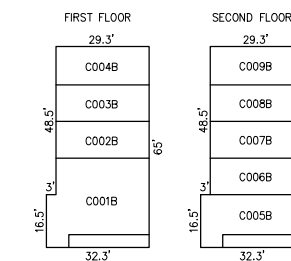
DETAILS
SCALE: 1"=30'

NOTE: DIMENSIONS AND SQUARE FOOTAGE ARE TYPICAL FOR SIMILAR UNITS

**BLOCK 429, LOT 57
BAY FRONT VILLA CONDOMINIUM
9506 AMHERST AVENUE
INSET "GGGG"**



DETAILS
SCALE: 1"=30'



DETAILS
SCALE: 1"=30'

UNIT NO.	LOT NO.
C001A	C-1.01
C001B	C-1.02
C002A	C-2.01
C002B	C-2.02
C003A	C-3.01
C003B	C-3.02
C004A	C-4.01
C004B	C-4.02
C005A	C-5.01
C005B	C-5.02
C006A	C-6.01
C006B	C-6.02
C007A	C-7.01
C007B	C-7.02
C008A	C-8.01
C008B	C-8.02
C009B	C-9.02

NOTE: DIMENSIONS AND SQUARE FOOTAGE ARE TYPICAL FOR SIMILAR UNITS

DETAILS
SCALE: 1"=30'

"THIS TAX MAP PLATE HAS BEEN DIGITALLY DRAWN USING COMPUTER-AIDED DRAFTING/DESIGN (CADD) & COORDINATE GEOMETRY (COG). IT IS BASED ON THE ORIGINAL DIGITALLY DRAWN TAX MAP PLATE BEARING THE OFFICIAL NEW JERSEY DIVISION TAXATION APPROVAL STAMP WITH APPROVAL DATE 6-3-2005 SERIAL NUMBER 846 AND SIGNATURES OF SIGNERS THOMAS J. REILLY, CHIEF, LOCAL PROPERTY, FIELD ASSISTANCE, SANTO C. DIDONATO, SUPERVISING FIELD REPRESENTATIVE. THE ORIGINAL DIGITALLY DRAWN TAX MAP PLATE WITH THE OFFICIAL APPROVAL STAMP IS ON FILE WITH REMINGTON, VERNICK & WALBERG ENGINEERS."



**TAX MAP
CITY OF MARGATE**

ATLANTIC COUNTY NEW JERSEY
SCALE: AS NOTED DATE: 1-30-2004
CRAIG F. REMINGTON LAND SURVEYOR LIC. NO. 23924

REMINGTON, VERNICK & WALBERG ENGINEERS
24 GA 28048700
845 N. MAIN STREET, PLEASANTVILLE, NJ 08232
(609) 645-710, FAX (609) 645-7076
WEB SITE ADDRESS: WWW.RVE.COM