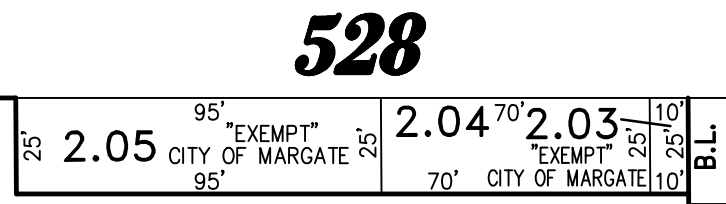
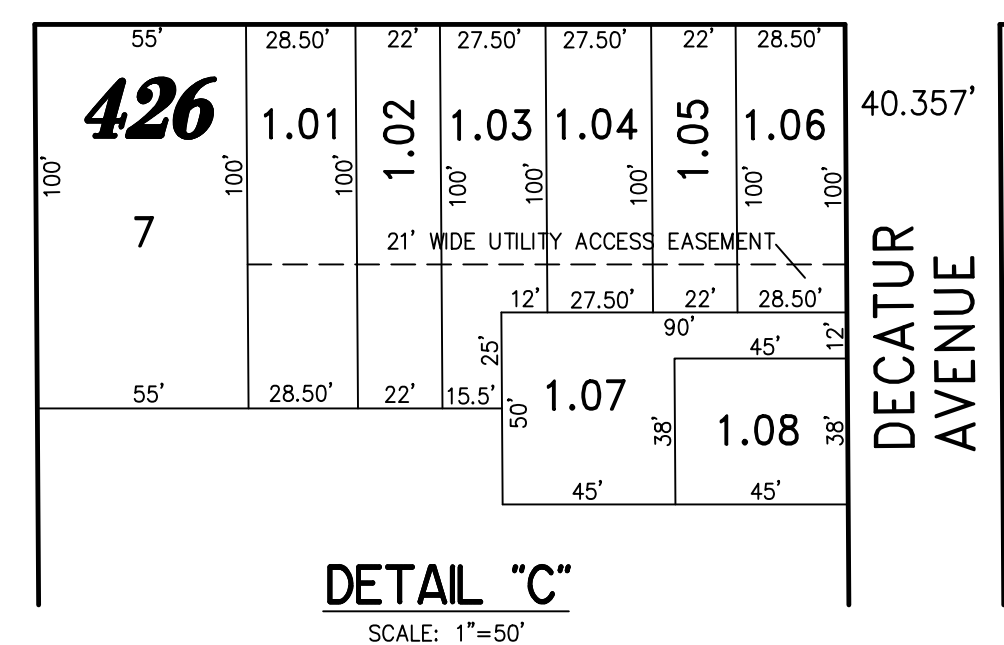
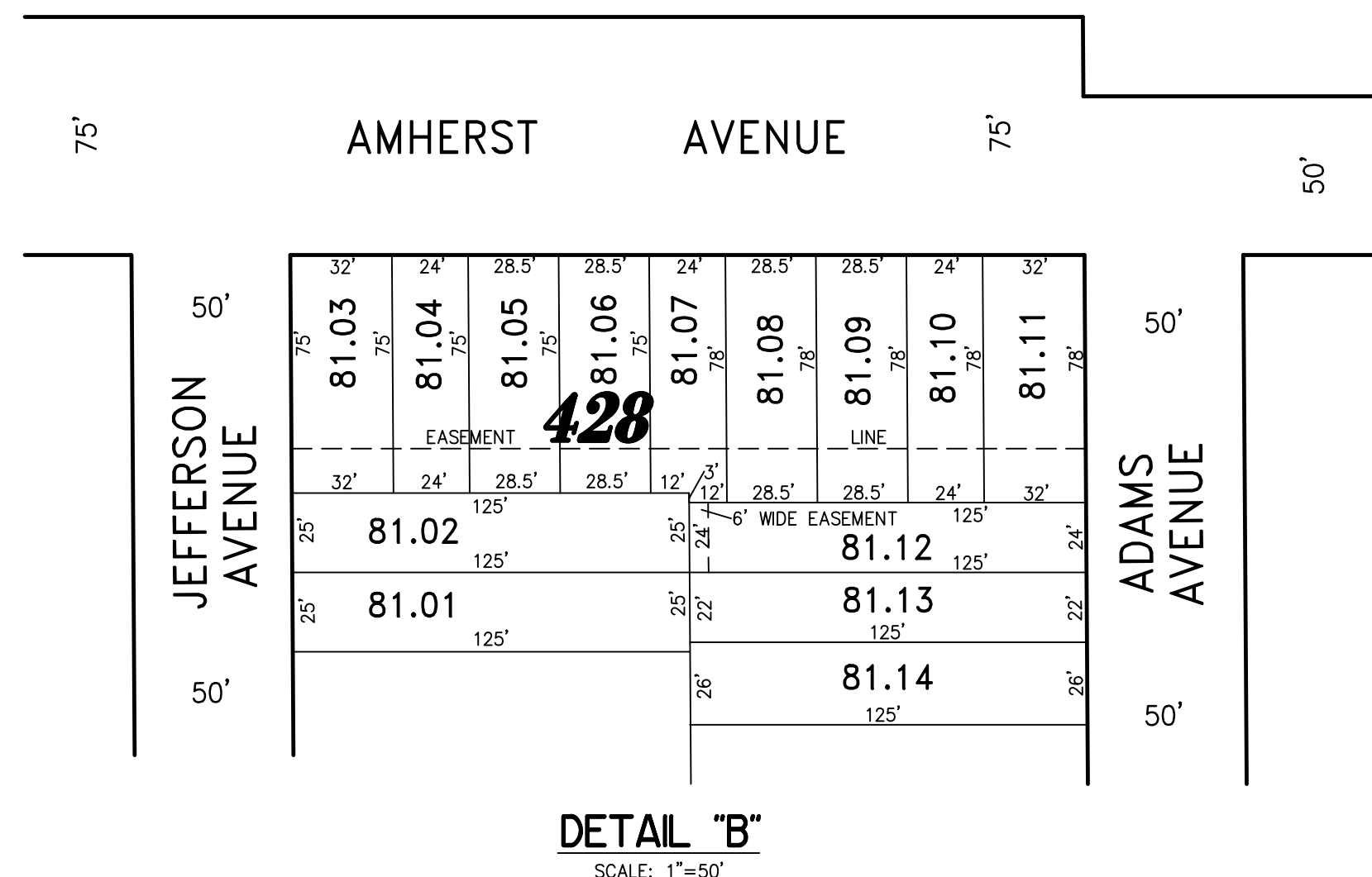
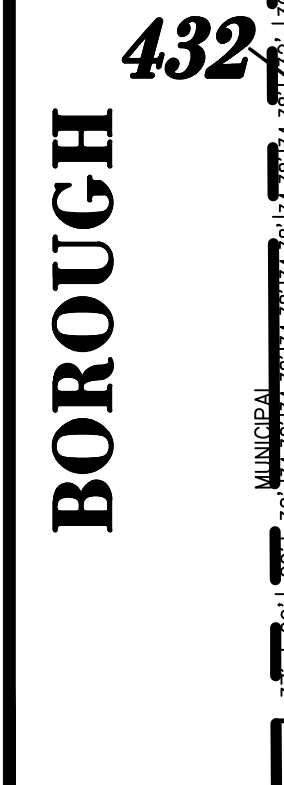
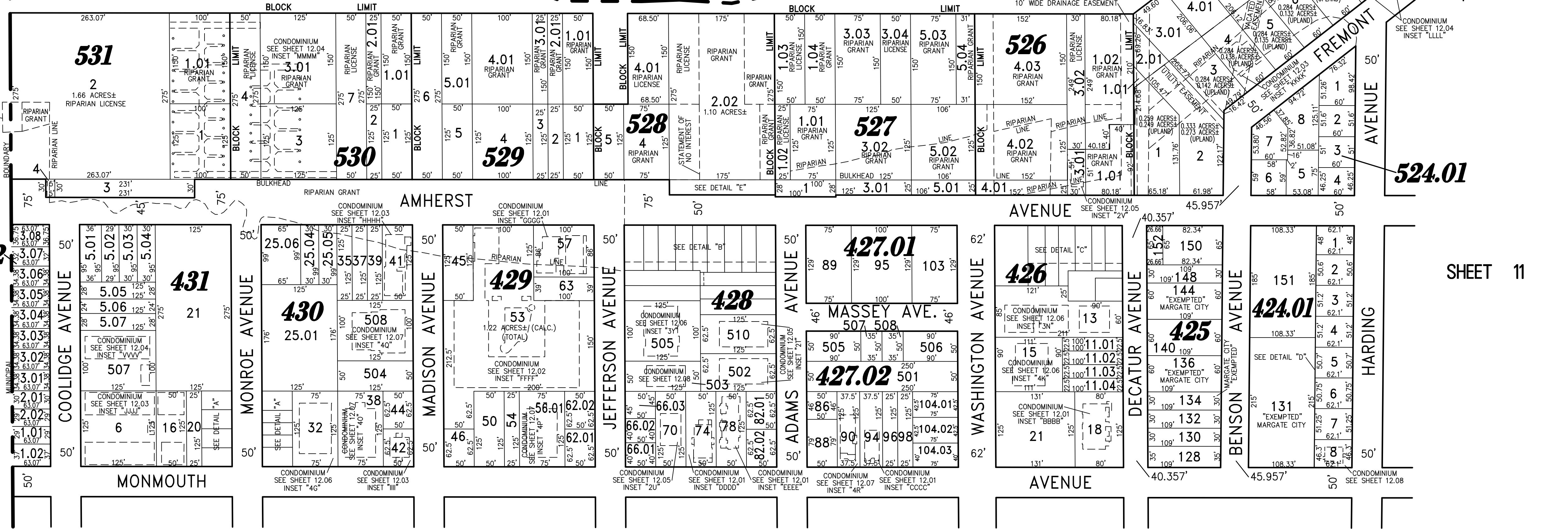


REVISIONS		
4-13-2007	CRAIG F. REMINGTON	23924
8-31-2009	CRAIG F. REMINGTON	23924
5-10-2010	CRAIG F. REMINGTON	23924
3-8-2012	CRAIG F. REMINGTON	23924
6-14-2013	CRAIG F. REMINGTON	23924
4-24-2014	CRAIG F. REMINGTON	23924
1-20-2015	CHARLES E. ADAMSON	42627
1-30-2017	CHARLES E. ADAMSON	42627
1-29-2019	CHARLES E. ADAMSON	42627
3-03-2020	CHARLES E. ADAMSON	42627
4-1-2021	CHARLES E. ADAMSON	42627
3-24-2022	CHARLES E. ADAMSON	42627



TOWNSHIP OF EGG HARBOR

BOROUGH OF LONGPORT



"THIS TAX MAP PLATE HAS BEEN DIGITALLY DRAWN USING COMPUTER-AIDED DRAFTING/DESIGN (CADD) & COORDINATE GEOMETRY (COGO). IT IS BASED ON THE ORIGINAL DIGITALLY DRAWN TAX MAP PLATE BEARING THE OFFICIAL NEW JERSEY DIVISION TAXATION APPROVAL STAMP WITH APPROVAL DATE 6-3-2005 SERIAL NUMBER 846 AND SIGNATURES OF SIGNERS THOMAS J. REILLY, CHIEF, LOCAL PROPERTY FIELD ASSISTANCE, SANTO C. DIDONATO, SUPERVISING FIELD REPRESENTATIVE. THE ORIGINAL DIGITALLY DRAWN TAX MAP PLATE WITH THE OFFICIAL APPROVAL STAMP IS ON FILE WITH REMINGTON, VERNICK & WALBERG ENGINEERS."

TAX MAP CITY OF MARGATE

ATLANTIC COUNTY NEW JERSEY SCALE: 1" = 100' DATE: 11-01-2003

CRAIG F. REMINGTON LAND SURVEYOR LIC. NO. 23924

**RV & W** REMINGTON, VERNICK & WALBERG ENGINEERS  
 845 N. MAIN STREET, PLEASANTVILLE, NJ 08232  
 (609) 645-710, FAX (609) 645-7076  
 WEB SITE ADDRESS: WWW.RVW.COM