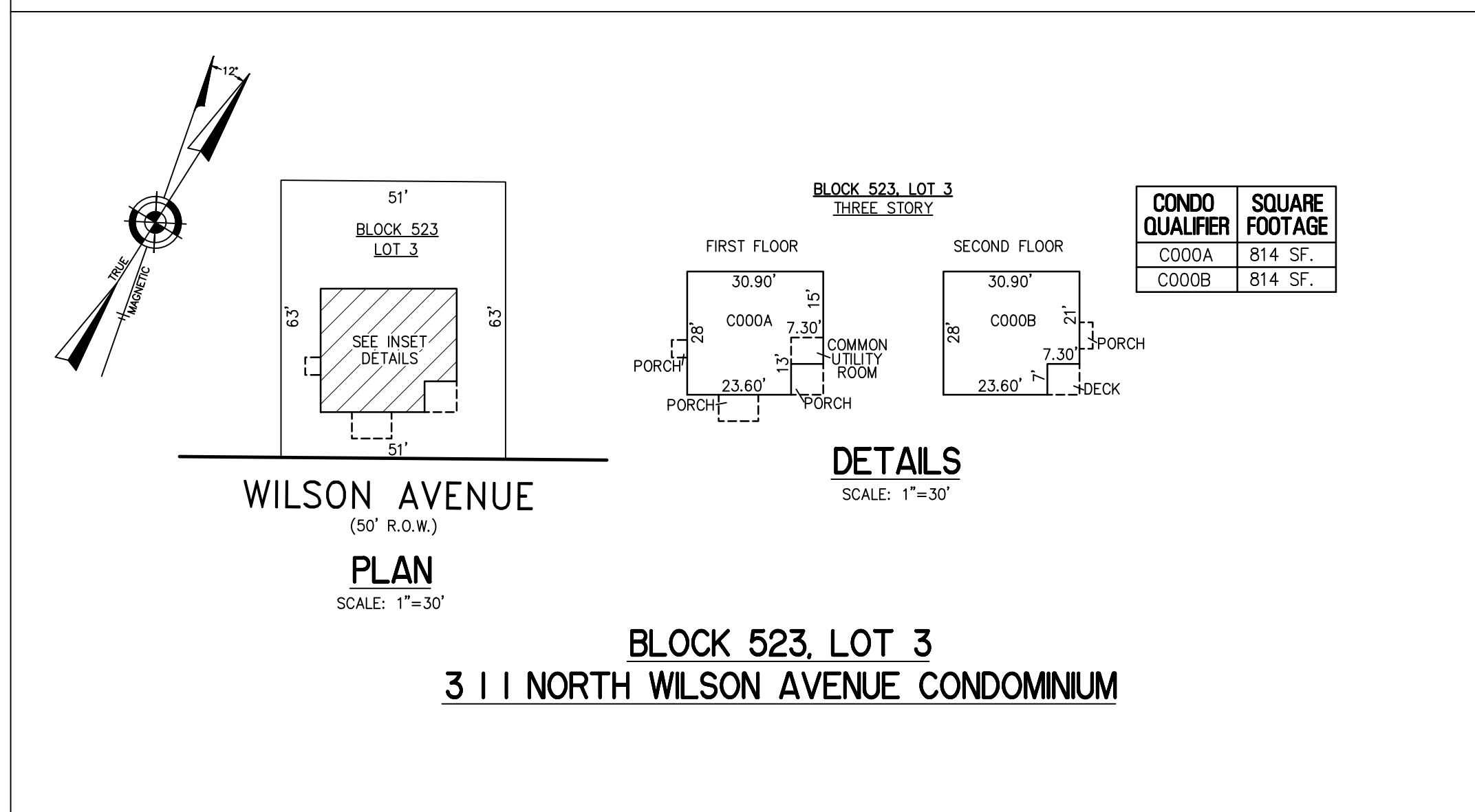
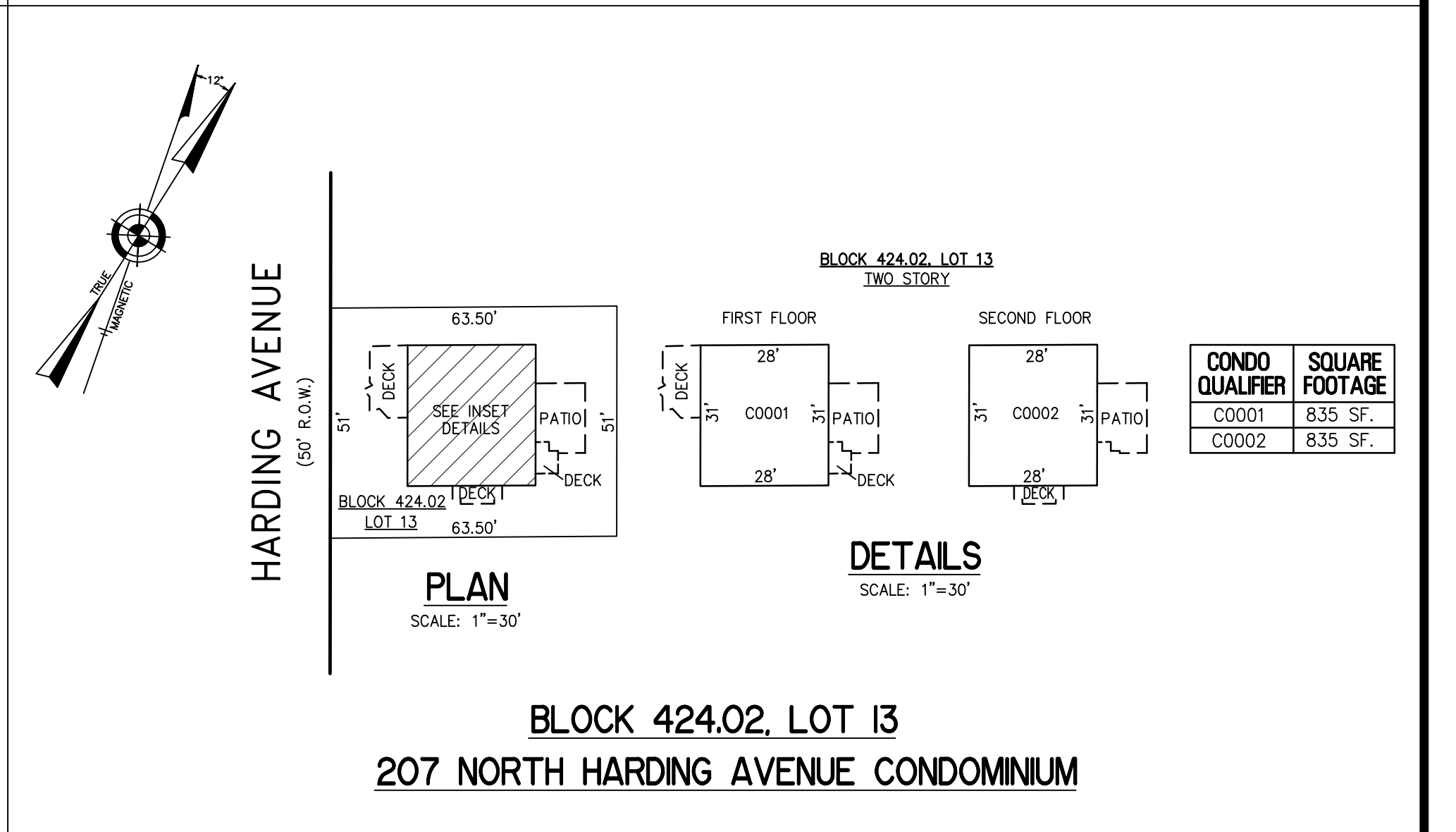
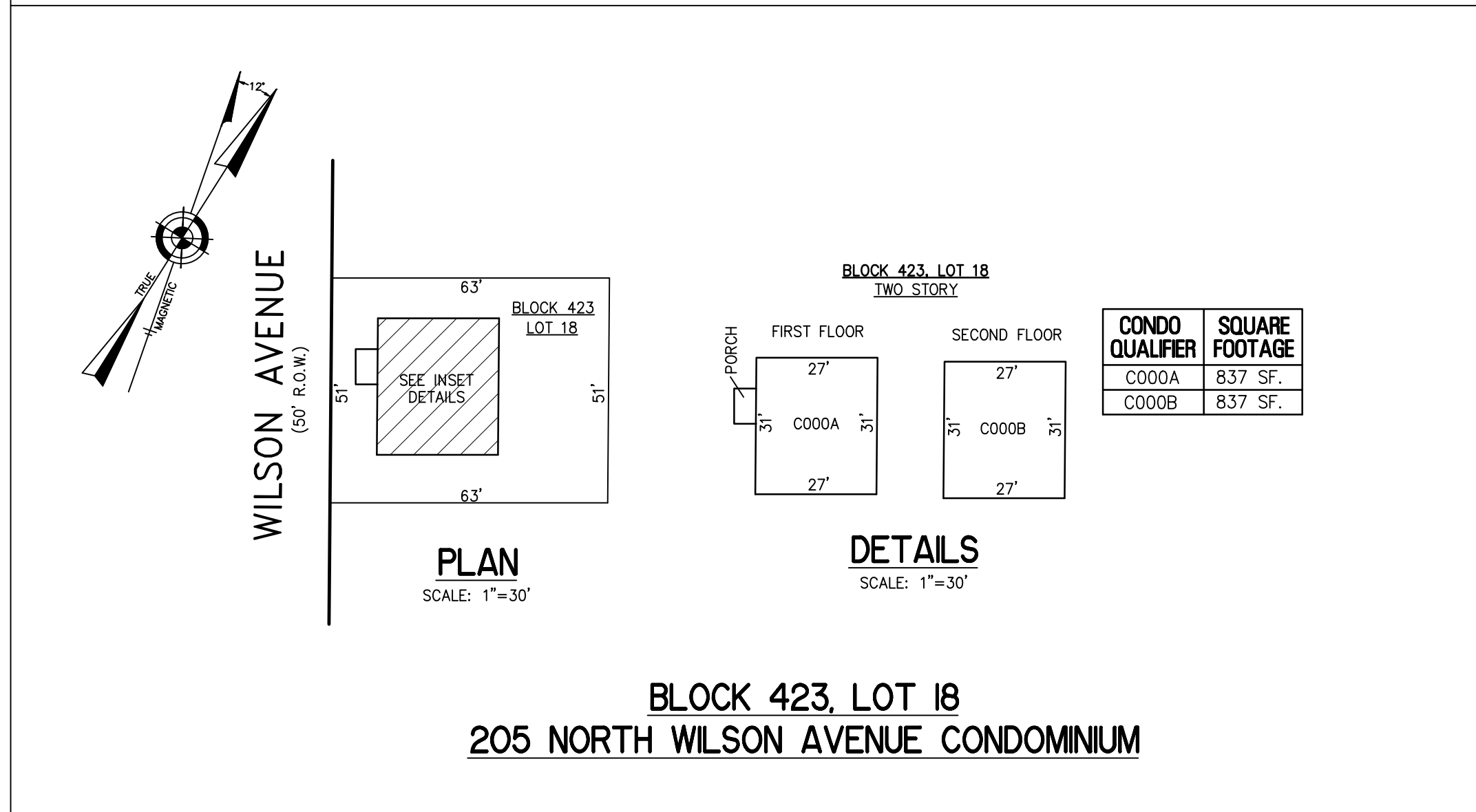
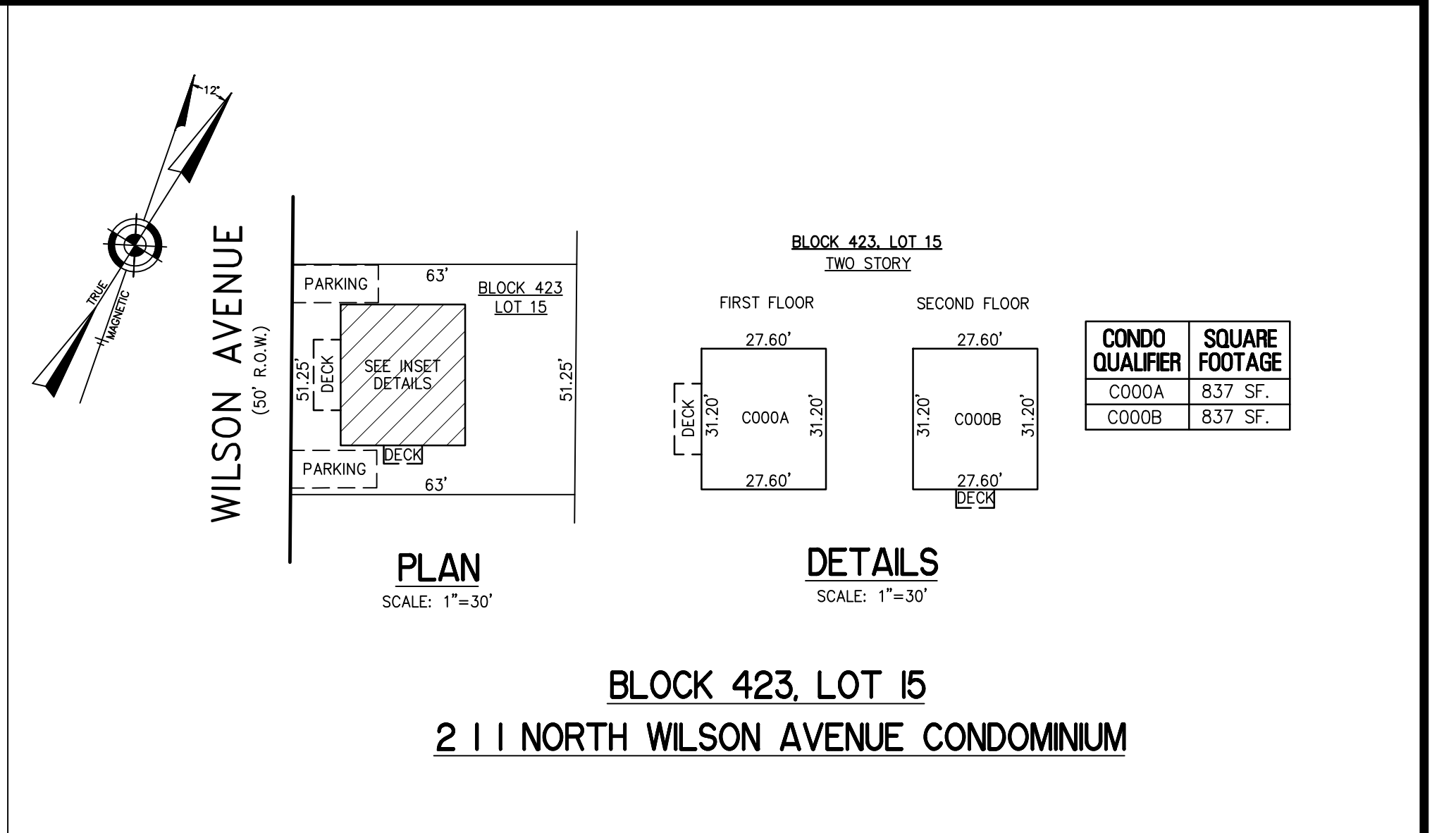
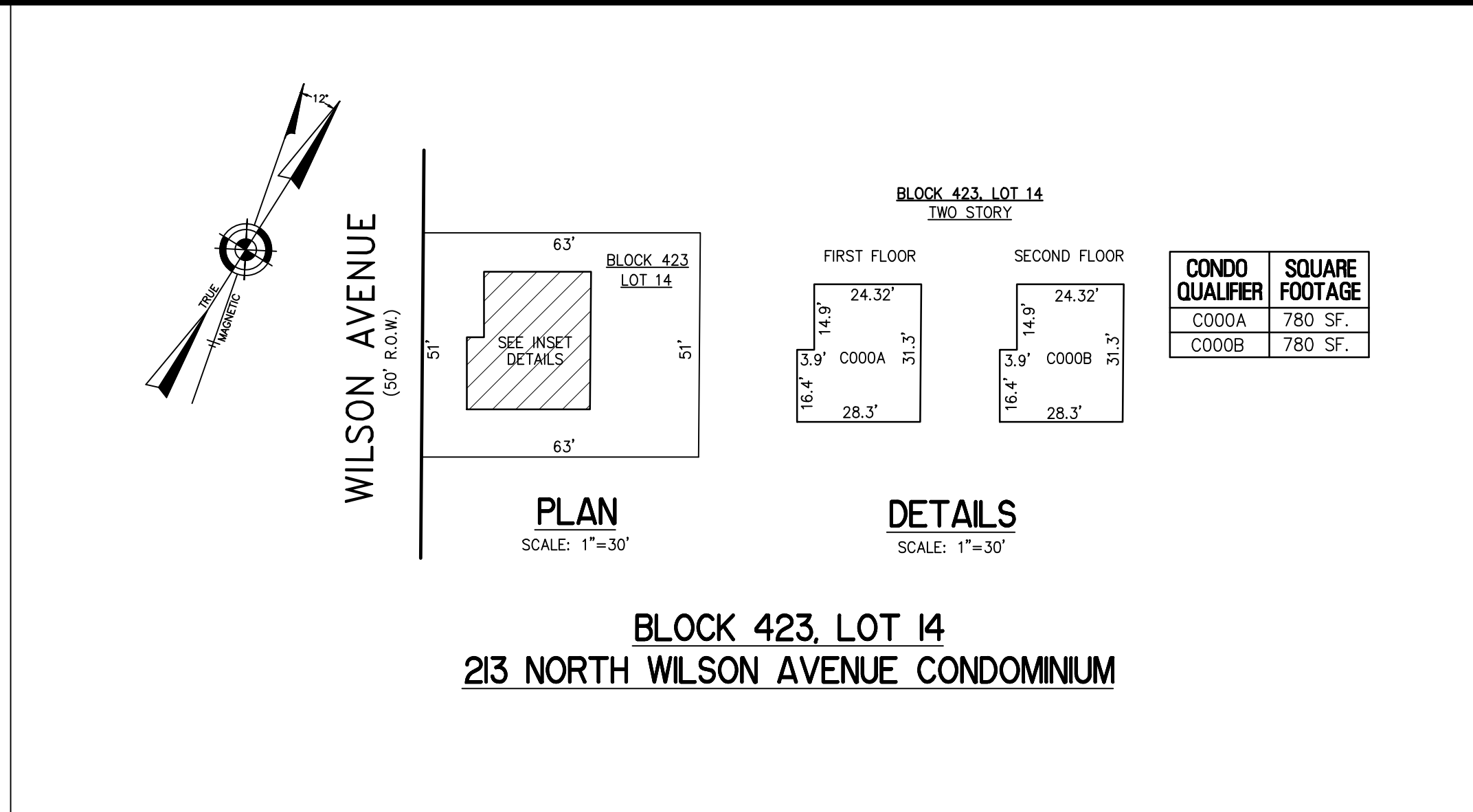



REVISIONS		
3-03-2020	CHARLES E. ADAMSON	42627
4-1-2021	CHARLES E. ADAMSON	42627
3-24-2022	CHARLES E. ADAMSON	42627



CONDOMINIUM DETAILS AND DIMENSIONS
 BLOCK 423, LOT 14
 BLOCK 423, LOT 15
 BLOCK 423, LOT 18
 BLOCK 424.02, LOT 13
 BLOCK 523, LOT 3
 SEE PLATE 11

"THIS TAX MAP PLATE HAS BEEN DIGITALLY DRAWN USING COMPUTER-AIDED DRAFTING/DESIGN (CADD) & COORDINATE GEOMETRY (COGO). IT IS BASED ON THE ORIGINAL DIGITALLY DRAWN TAX MAP PLATE BEARING THE OFFICIAL NEW JERSEY DIVISION TAXATION APPROVAL STAMP WITH APPROVAL DATE 6-3-2005 SERIAL NUMBER 846 AND SIGNATURES OF SIGNERS' THOMAS J. REILLY, CHIEF, LOCAL PROPERTY, FIELD ASSISTANCE. SANTO C. DIDONATO, SUPERVISING FIELD REPRESENTATIVE. THE ORIGINAL DIGITALLY DRAWN TAX MAP PLATE WITH THE OFFICIAL APPROVAL STAMP IS ON FILE WITH REMINGTON, VERNICK & WALBERG ENGINEERS."

TAX MAP
CITY OF MARGATE
 ATLANTIC COUNTY NEW JERSEY
 SCALE: AS NOTED DATE: 1-30-2004
CRAIG F. REMINGTON LAND SURVEYOR LIC. NO. 23924
 **REMINGTON, VERNICK & WALBERG ENGINEERS**
 845 N. MAIN STREET, PLEASANTVILLE, N.J. 08232
 (609) 645-710. FAX (609) 645-7076
 WEB SITE ADDRESS: WWW.RVW.COM