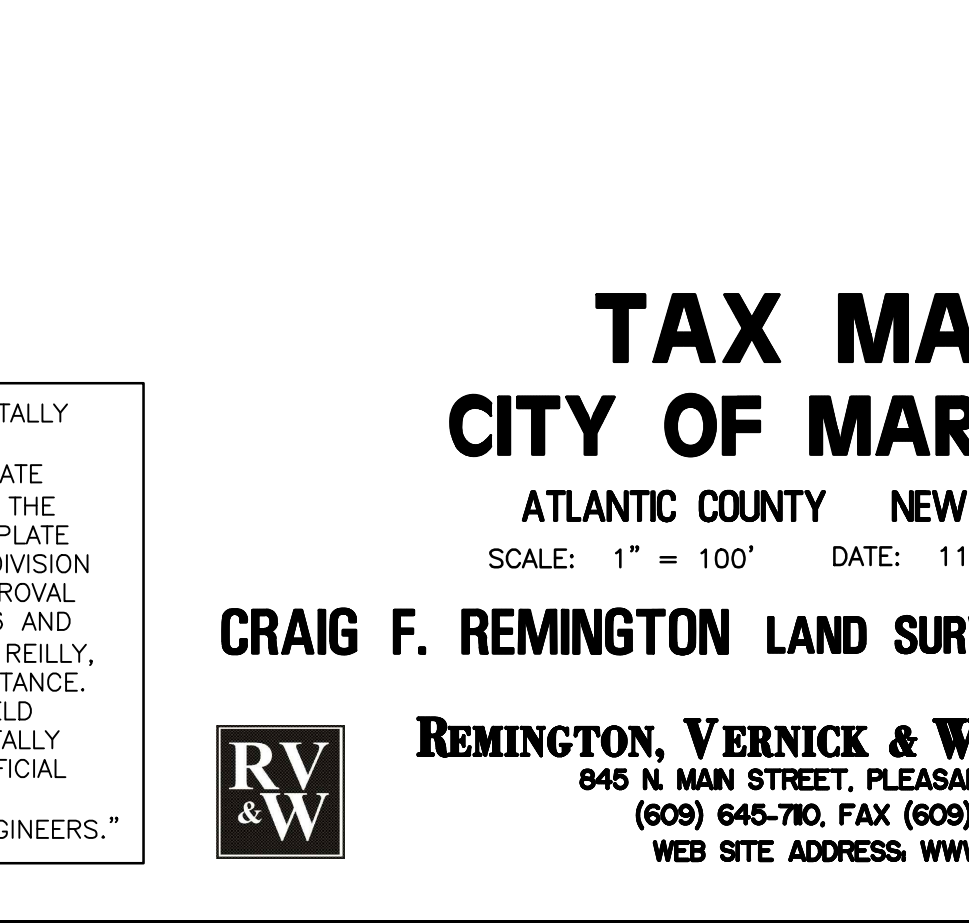
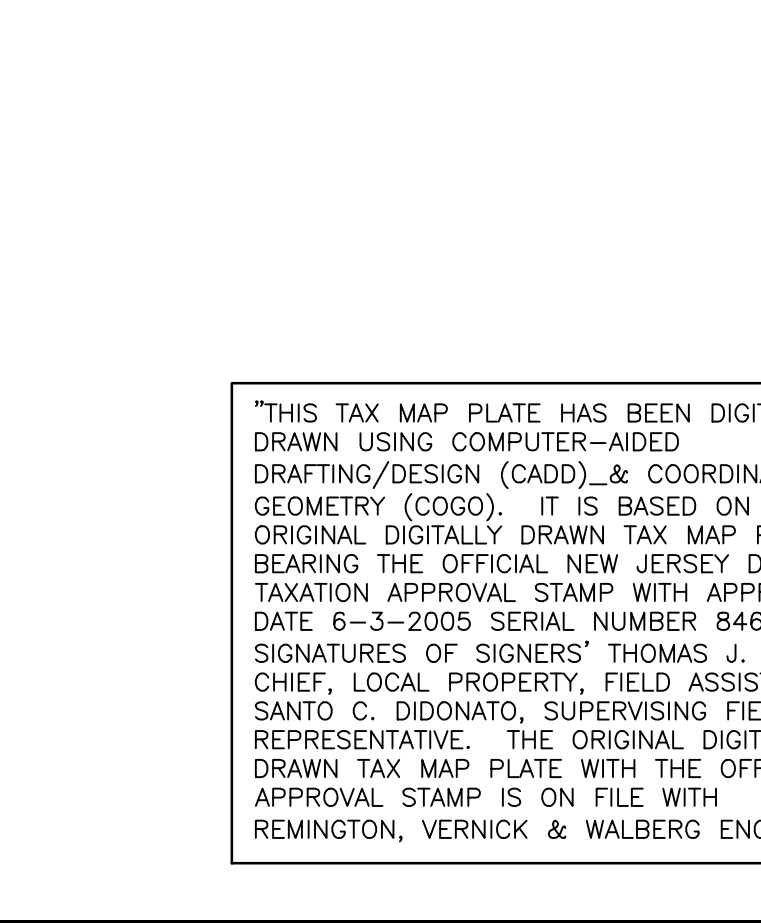
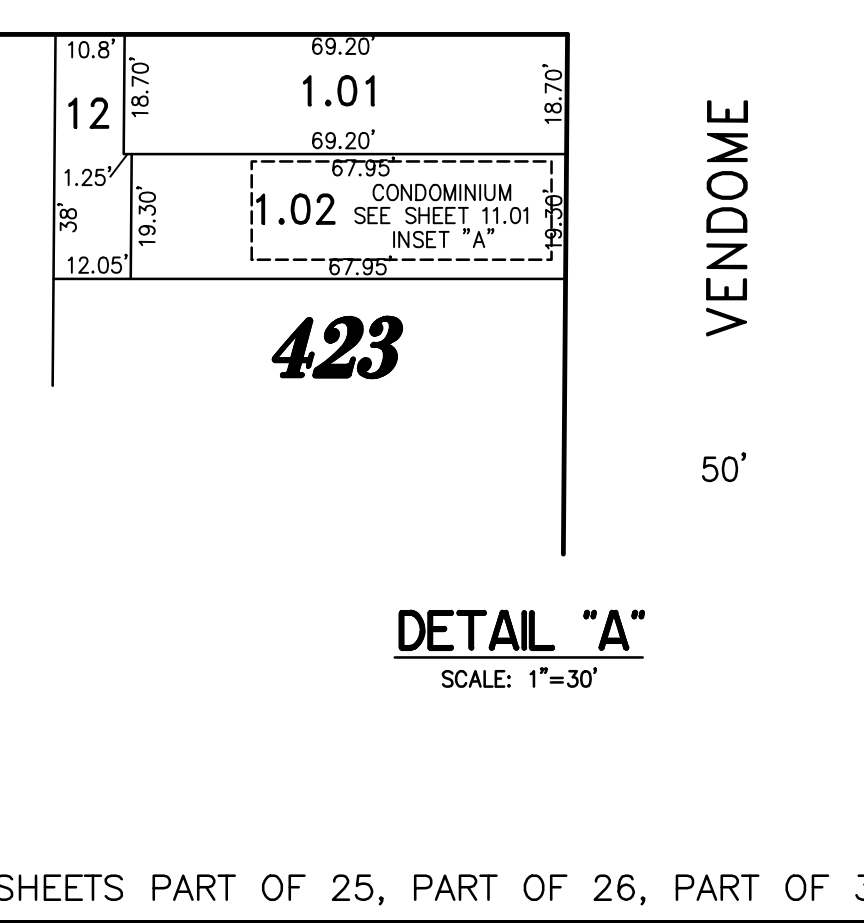
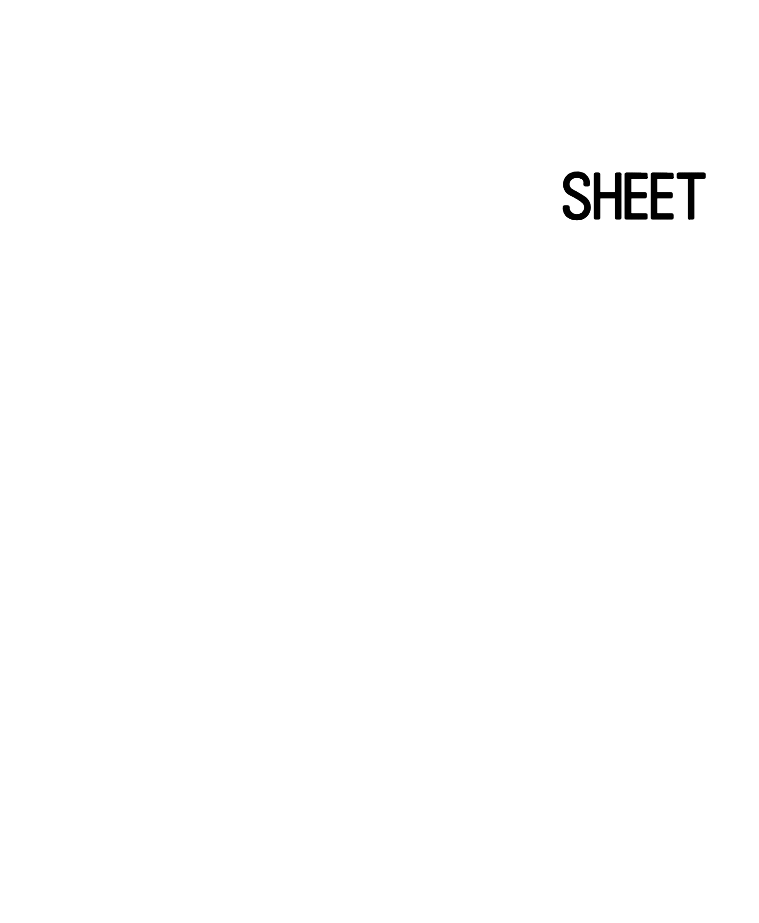
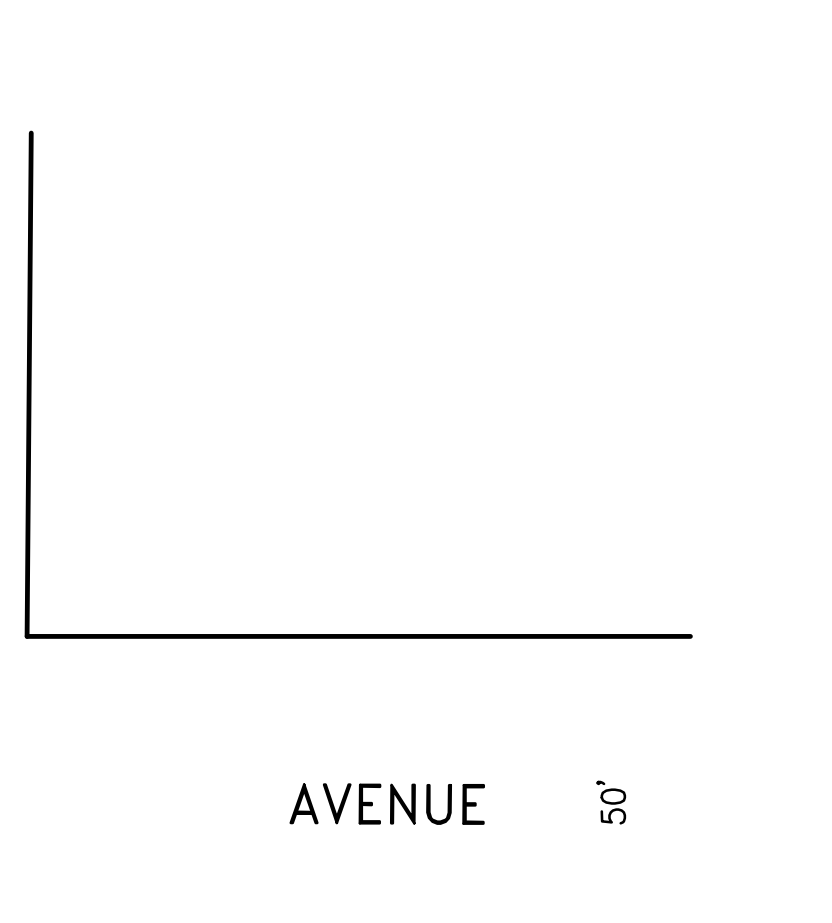
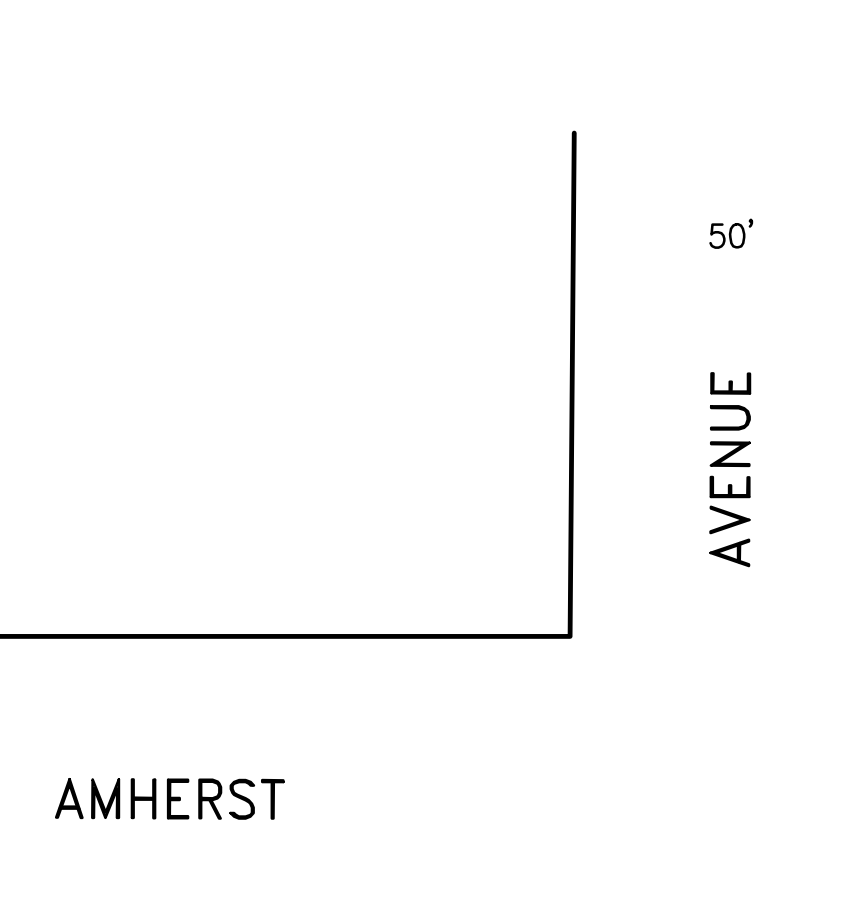
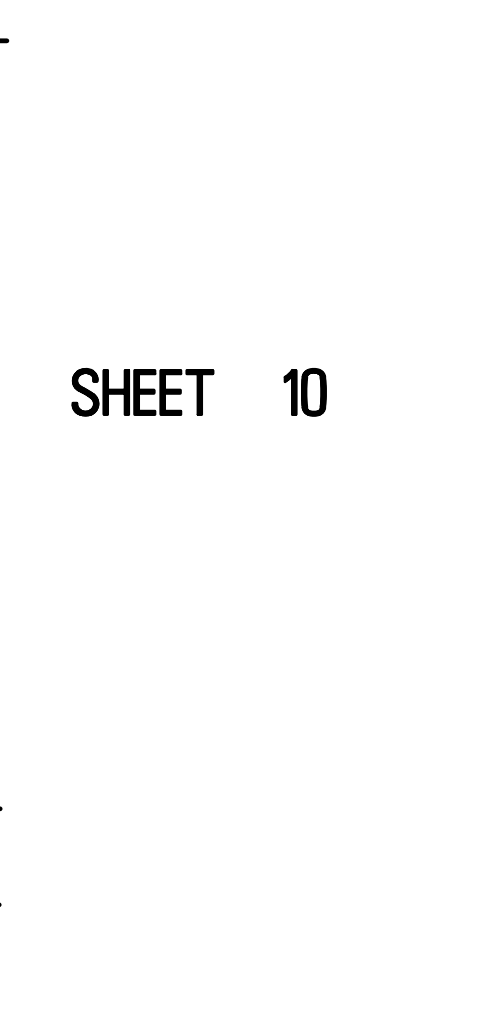
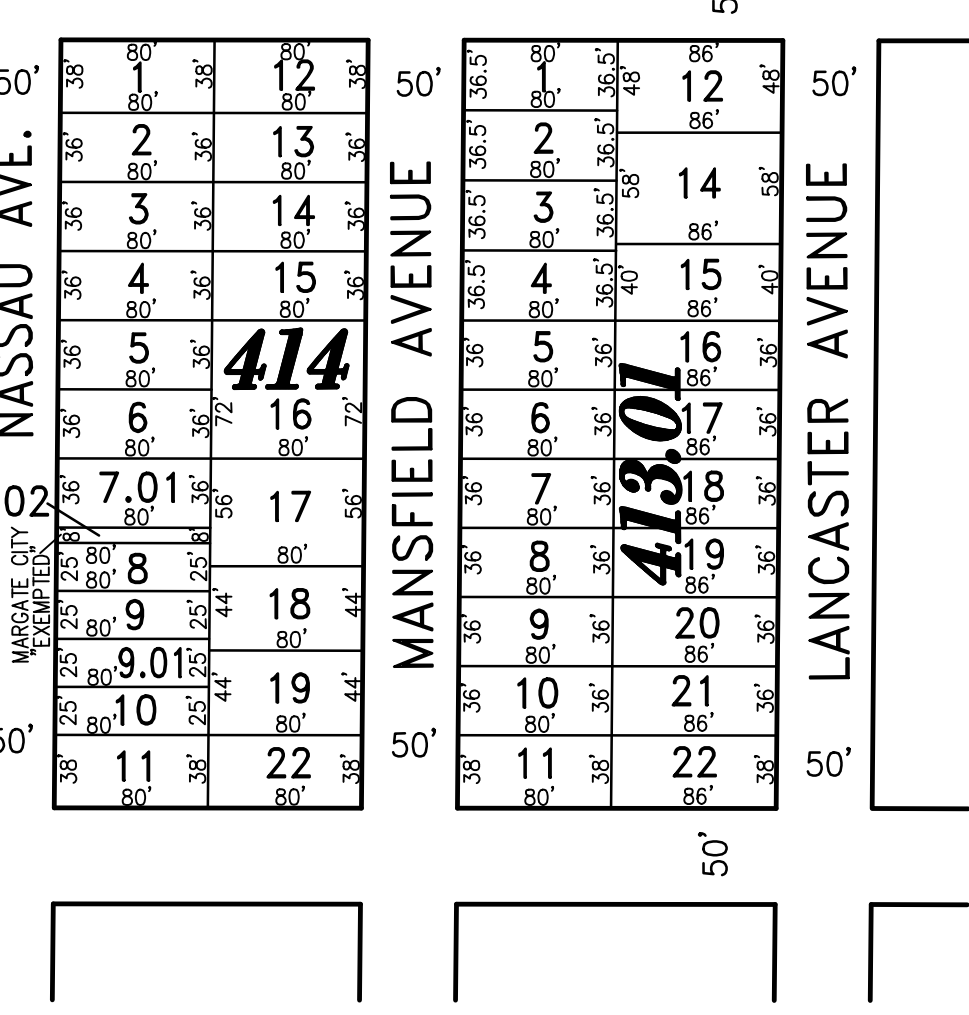
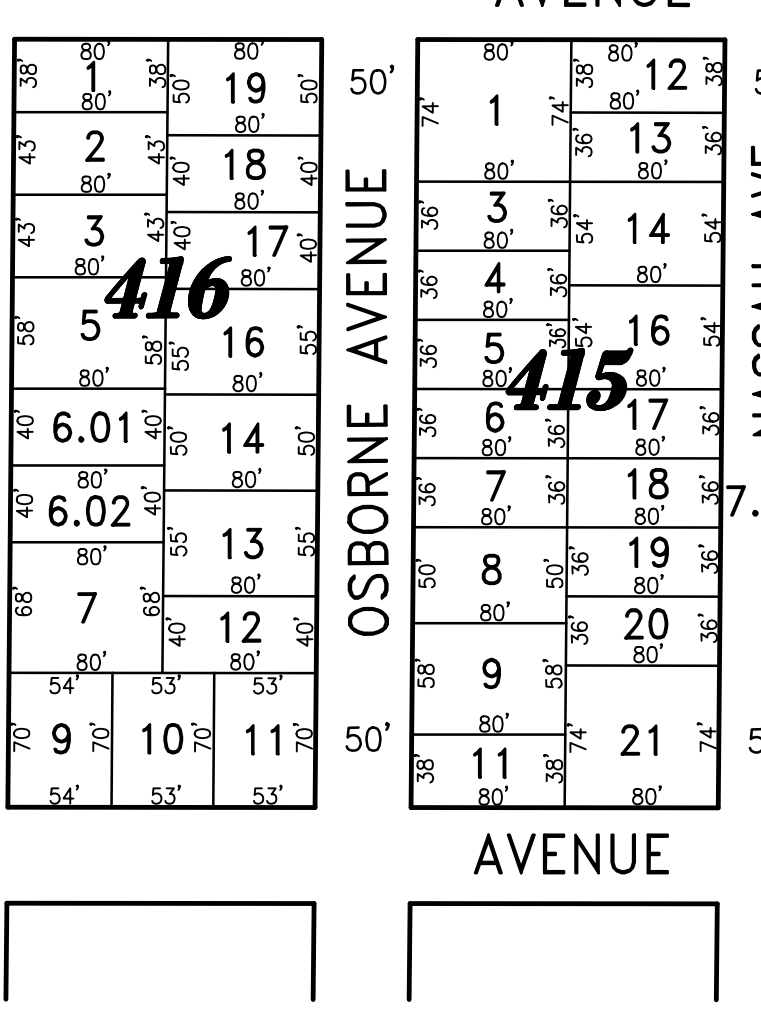
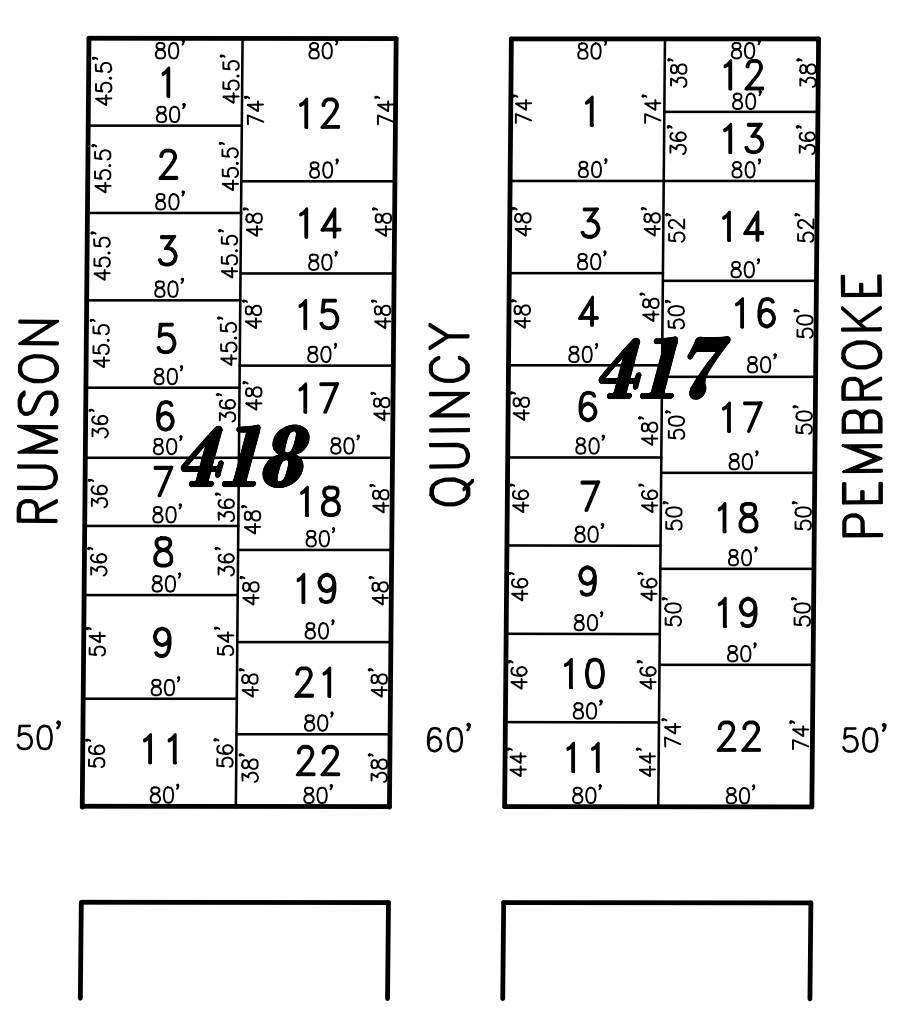
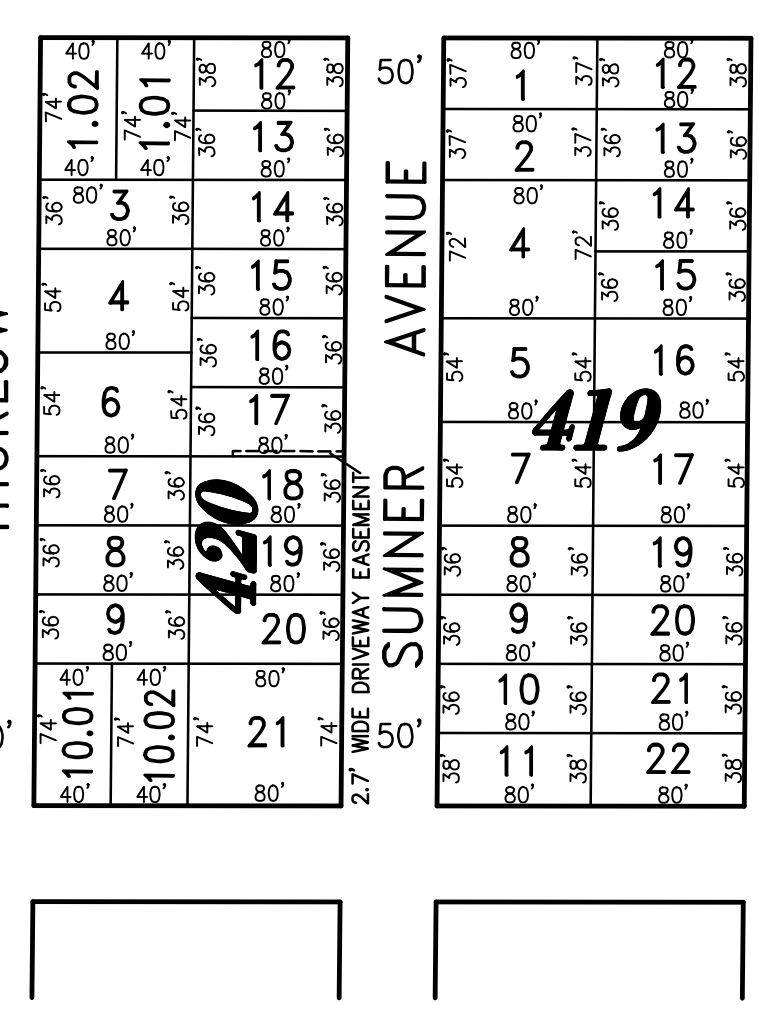
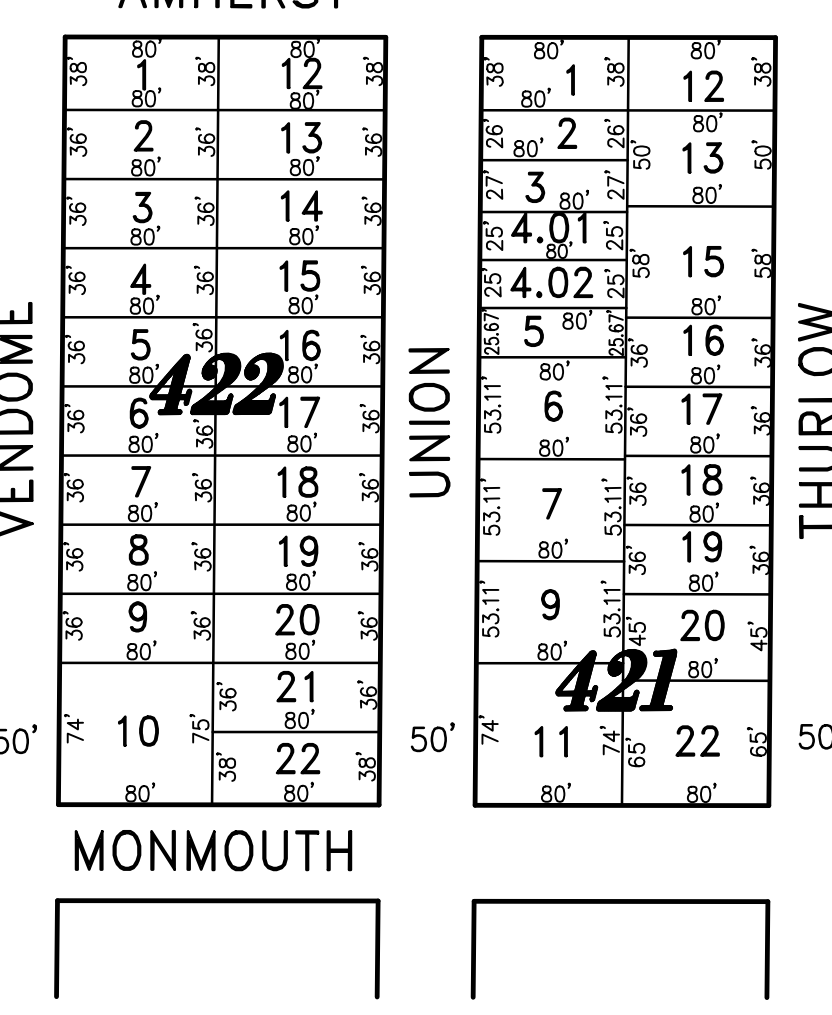
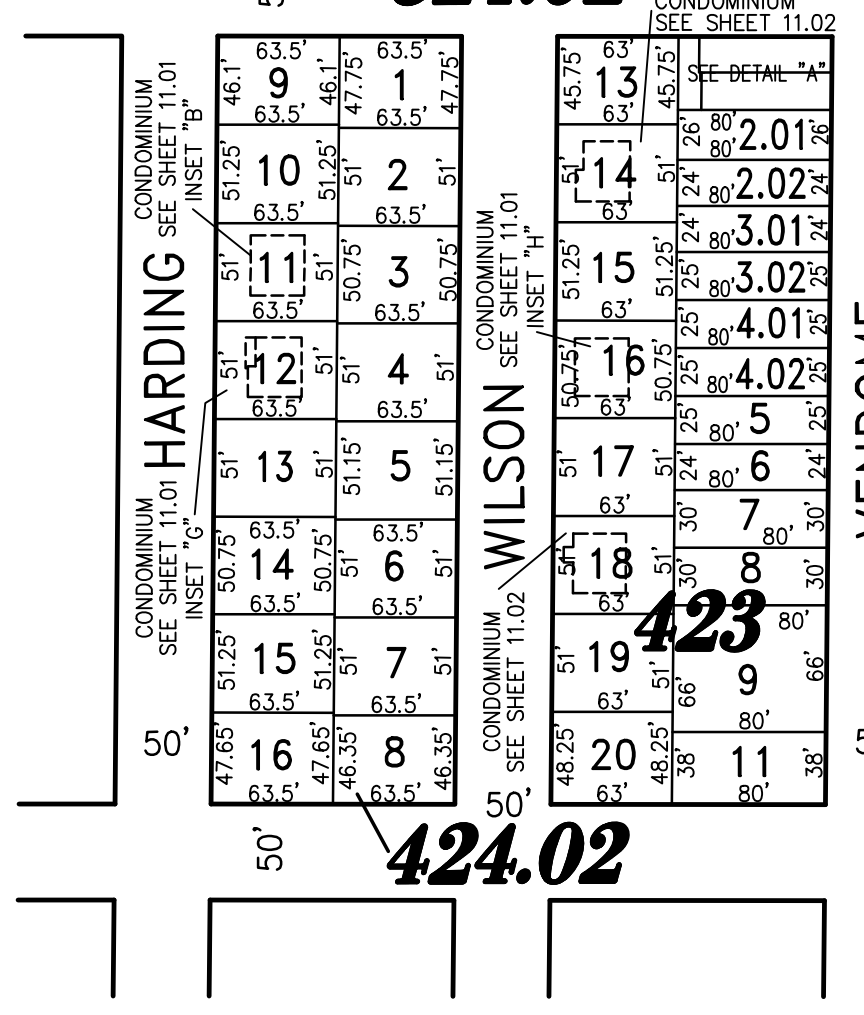
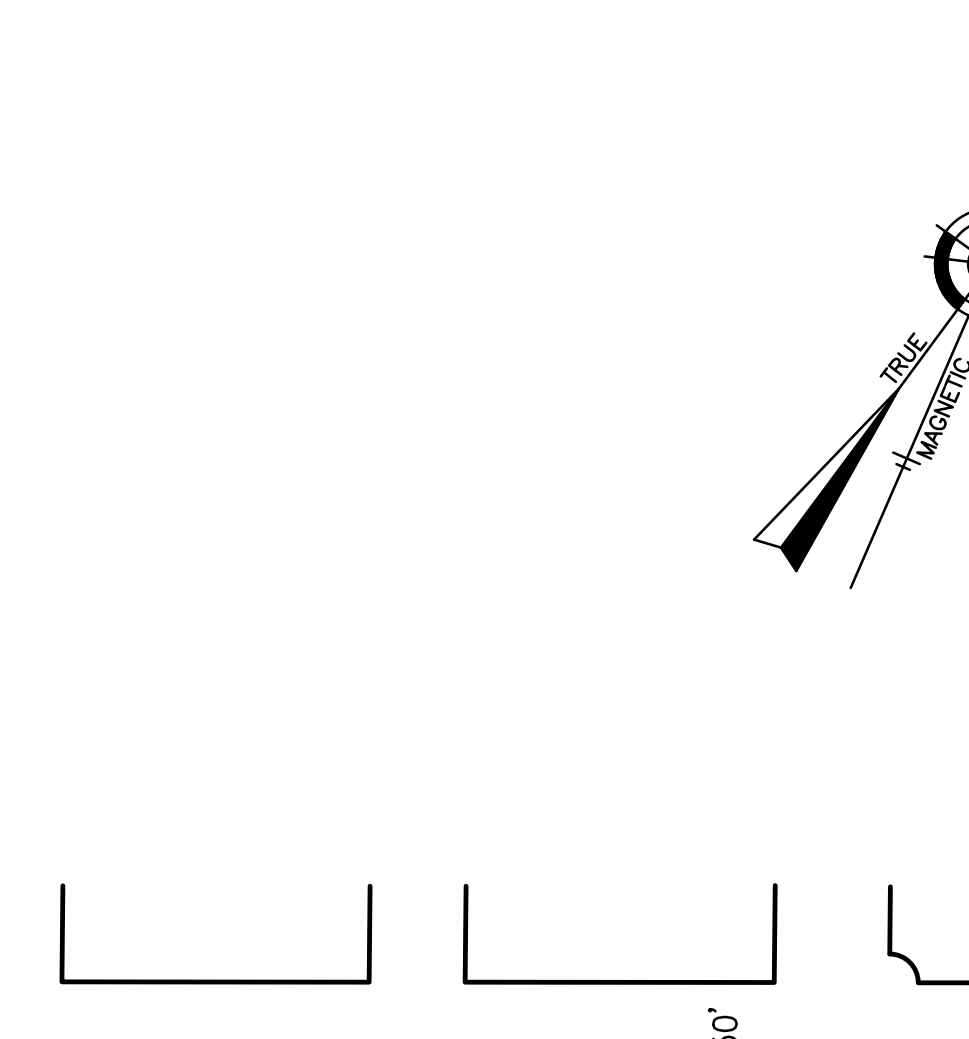
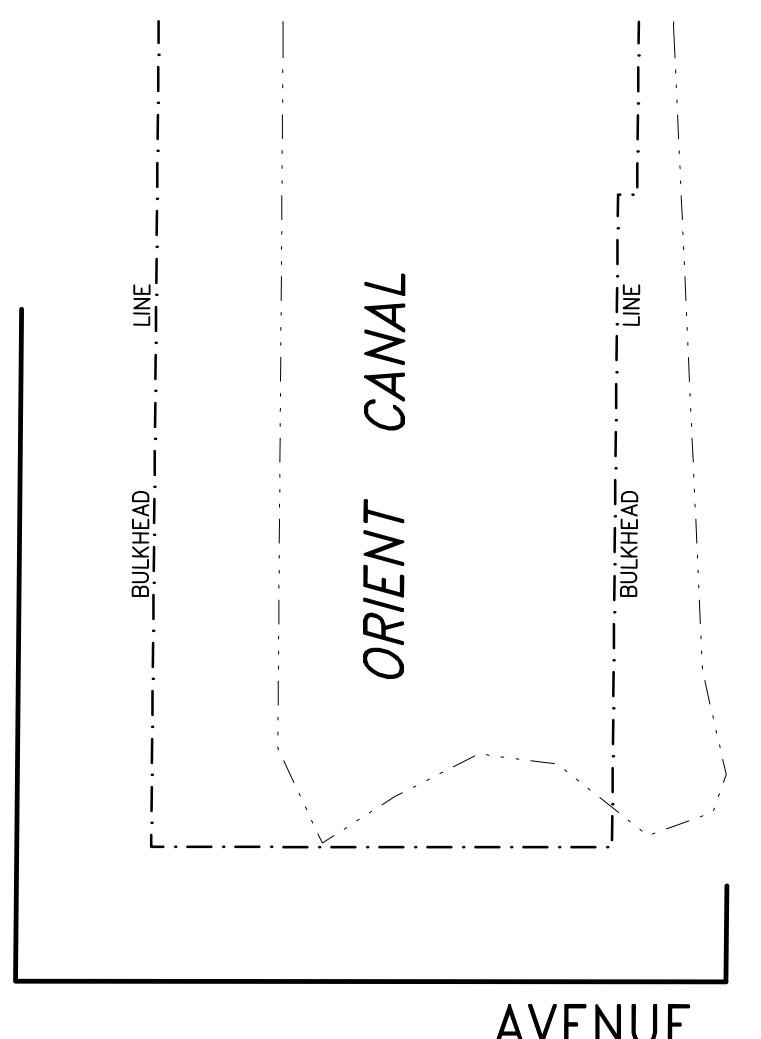
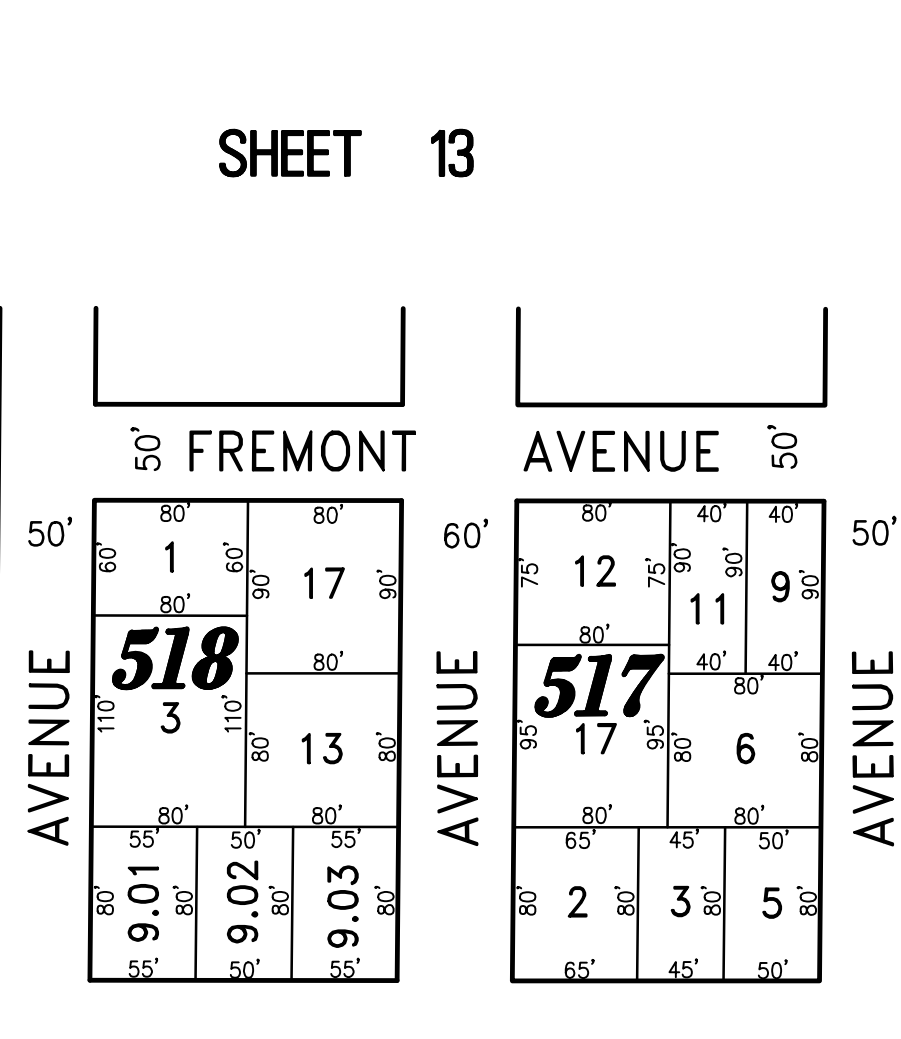
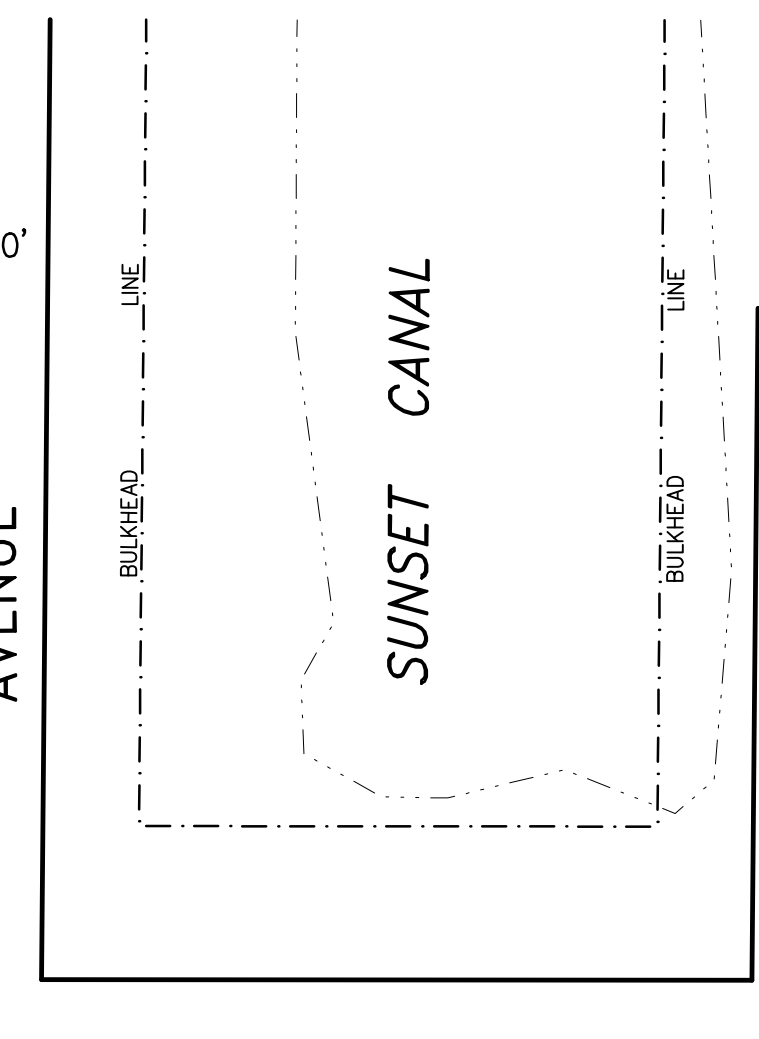
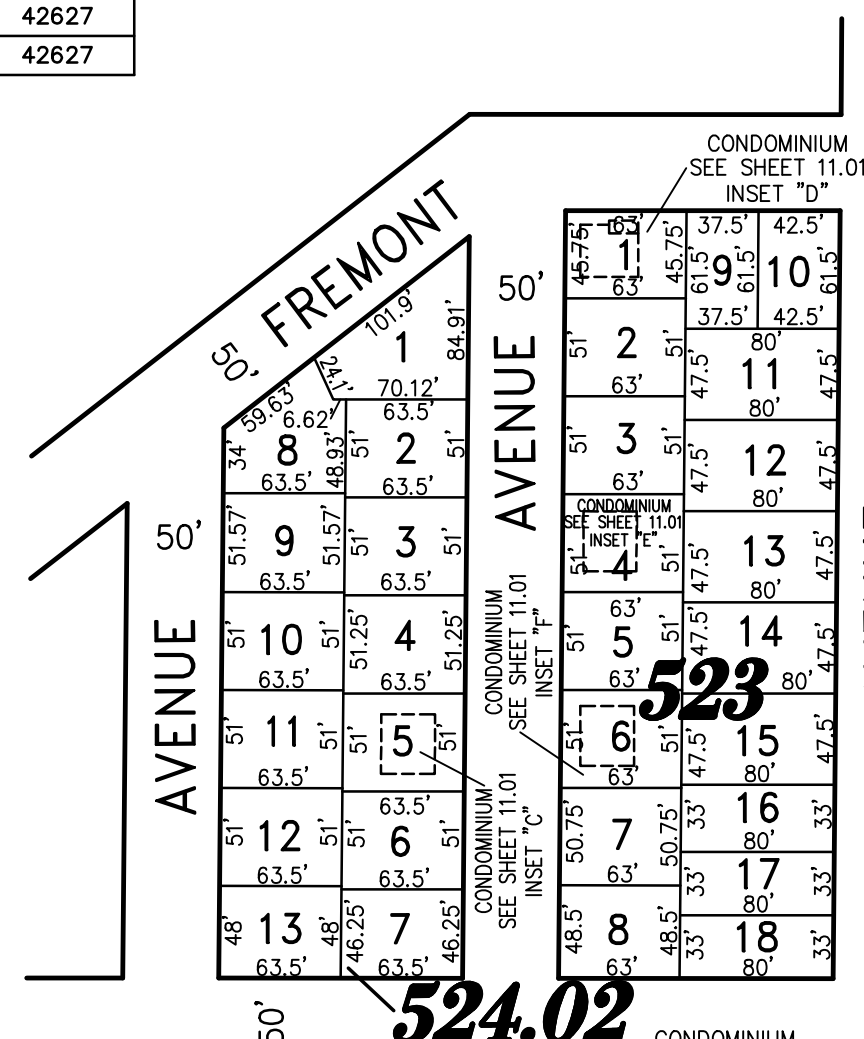


REVISIONS		
4-13-2007	CRAIG F. REMINGTON	23924
8-31-2009	CRAIG F. REMINGTON	23924
12-31-2010	CRAIG F. REMINGTON	23924
3-8-2012	CRAIG F. REMINGTON	23924
4-24-2014	CRAIG F. REMINGTON	23924
1-20-2015	CHARLES E. ADAMSON	42627
1-30-2017	CHARLES E. ADAMSON	42627
1-29-2019	CHARLES E. ADAMSON	42627



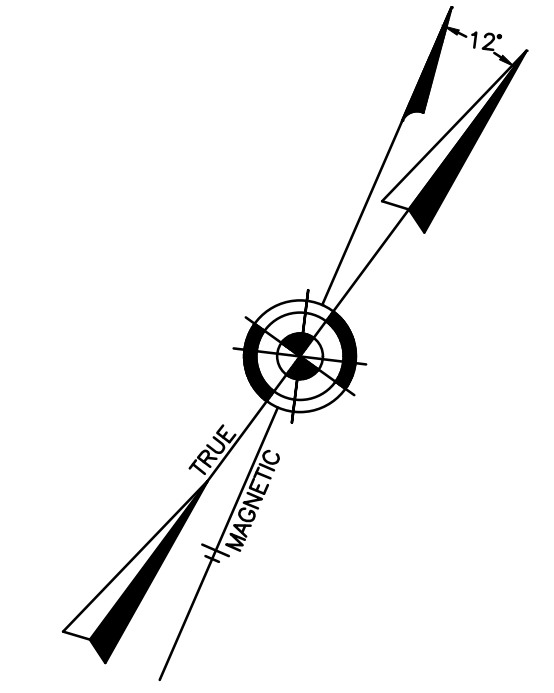
SHEET 12

SHEET 13

SHEET 6

SHEET 7

SHEET 10



DETAIL "A"
SCALE: 1"=30'

"THIS TAX MAP PLATE HAS BEEN DIGITALLY DRAWN USING COMPUTER-AIDED DRAFTING/DESIGN (CADD) & COORDINATE GEOMETRY (COGO). IT IS BASED ON THE ORIGINAL DIGITALLY DRAWN TAX MAP PLATE BEARING THE OFFICIAL NEW JERSEY DIVISION TAXATION APPROVAL STAMP WITH APPROVAL DATE 6-3-2006 SERIAL NUMBER 846 AND SIGNATURES OF SIGNERS' THOMAS J. REILLY, CHIEF, LOCAL PROPERTY, FIELD ASSISTANCE, SANTO C. DIDONATO, SUPERVISING FIELD REPRESENTATIVE. THE ORIGINAL DIGITALLY DRAWN TAX MAP PLATE WITH THE OFFICIAL APPROVAL STAMP IS ON FILE WITH REMINGTON, VERNICK & WALBERG ENGINEERS."

**TAX MAP
CITY OF MARGATE**

ATLANTIC COUNTY NEW JERSEY
SCALE: 1" = 100' DATE: 11-01-2003

CRAIG F. REMINGTON LAND SURVEYOR LIC. NO. 23924



REMINGTON, VERNICK & WALBERG ENGINEERS
24 GA 28048700
845 N. MAIN STREET, PLEASANTVILLE, NJ 08232
(609) 645-7100 FAX (609) 645-7076
WEB SITE ADDRESS: WWW.RVW.COM