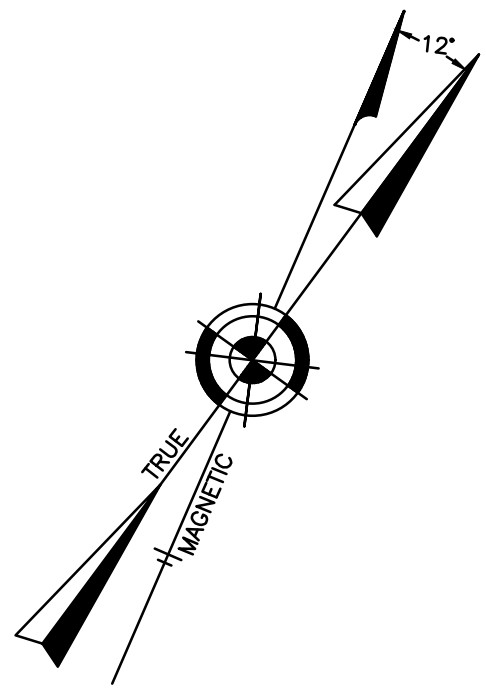
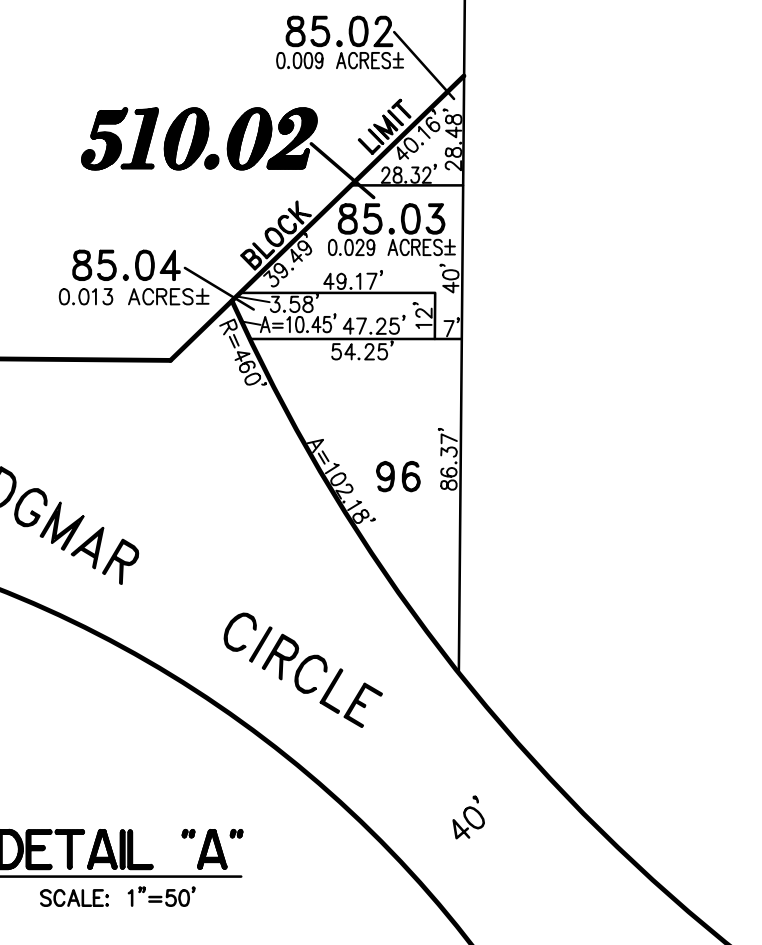
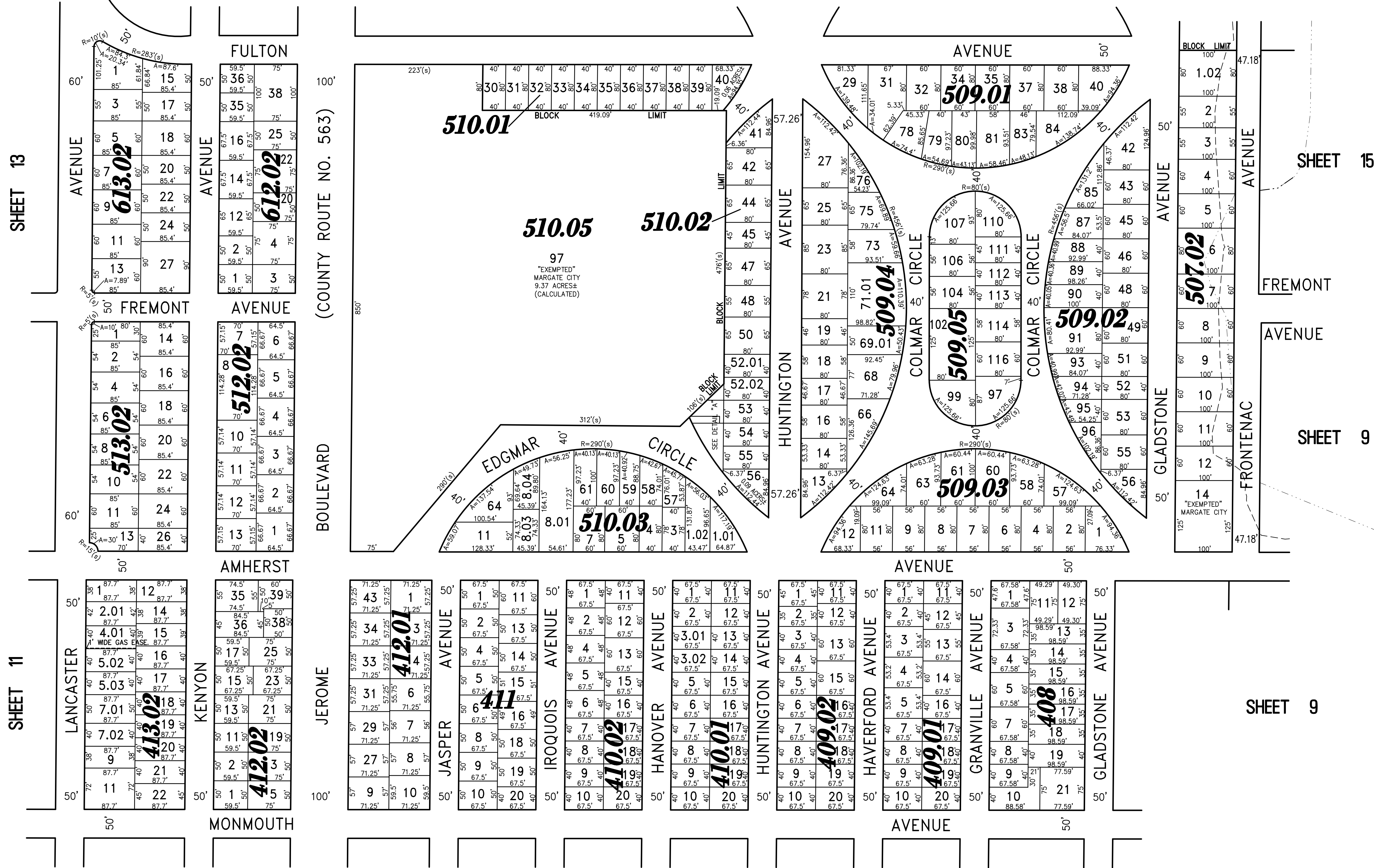


REVISIONS		
8-31-2009	CRAIG F. REMINGTON	23924
12-31-2010	CRAIG F. REMINGTON	23924
4-24-2014	CRAIG F. REMINGTON	23924
1-20-2015	CHARLES E. ADAMSON	42627
12-11-2015	CHARLES E. ADAMSON	42627
1-30-2017	CHARLES E. ADAMSON	42627



SHEET 14



SHEET 13

SHEET 11

SHEET 15

SHEET 9

SHEET 9

SHEET 7

"THIS TAX MAP PLATE HAS BEEN DIGITALLY DRAWN USING COMPUTER-AIDED DRAFTING/DESIGN (CADD) & COORDINATE GEOMETRY (COGO). IT IS BASED ON THE ORIGINAL DIGITALLY DRAWN TAX MAP PLATE BEARING THE OFFICIAL NEW JERSEY DIVISION TAXATION APPROVAL STAMP WITH APPROVAL DATE 6-3-2005 SERIAL NUMBER 846 AND SIGNATURES OF SIGNERS THOMAS J. REILLY, CHIEF, LOCAL PROPERTY, FIELD ASSISTANCE, SANTO C. DIDONATO, SUPERVISING FIELD REPRESENTATIVE. THE ORIGINAL DIGITALLY DRAWN TAX MAP PLATE WITH THE OFFICIAL APPROVAL STAMP IS ON FILE WITH REMINGTON, VERNICK & WALBERG ENGINEERS."

TAX MAP CITY OF MARGATE

ATLANTIC COUNTY NEW JERSEY
SCALE: 1" = 100' DATE: 11-01-2003

CRAIG F. REMINGTON LAND SURVEYOR LIC. NO. 23924



REMINGTON, VERNICK & WALBERG ENGINEERS
24 GA 28048700
845 N. MAIN STREET, PLEASANTVILLE, NJ 08232
(609) 645-7100, FAX (609) 645-7076
WEB SITE ADDRESS: WWW.RVWE.COM