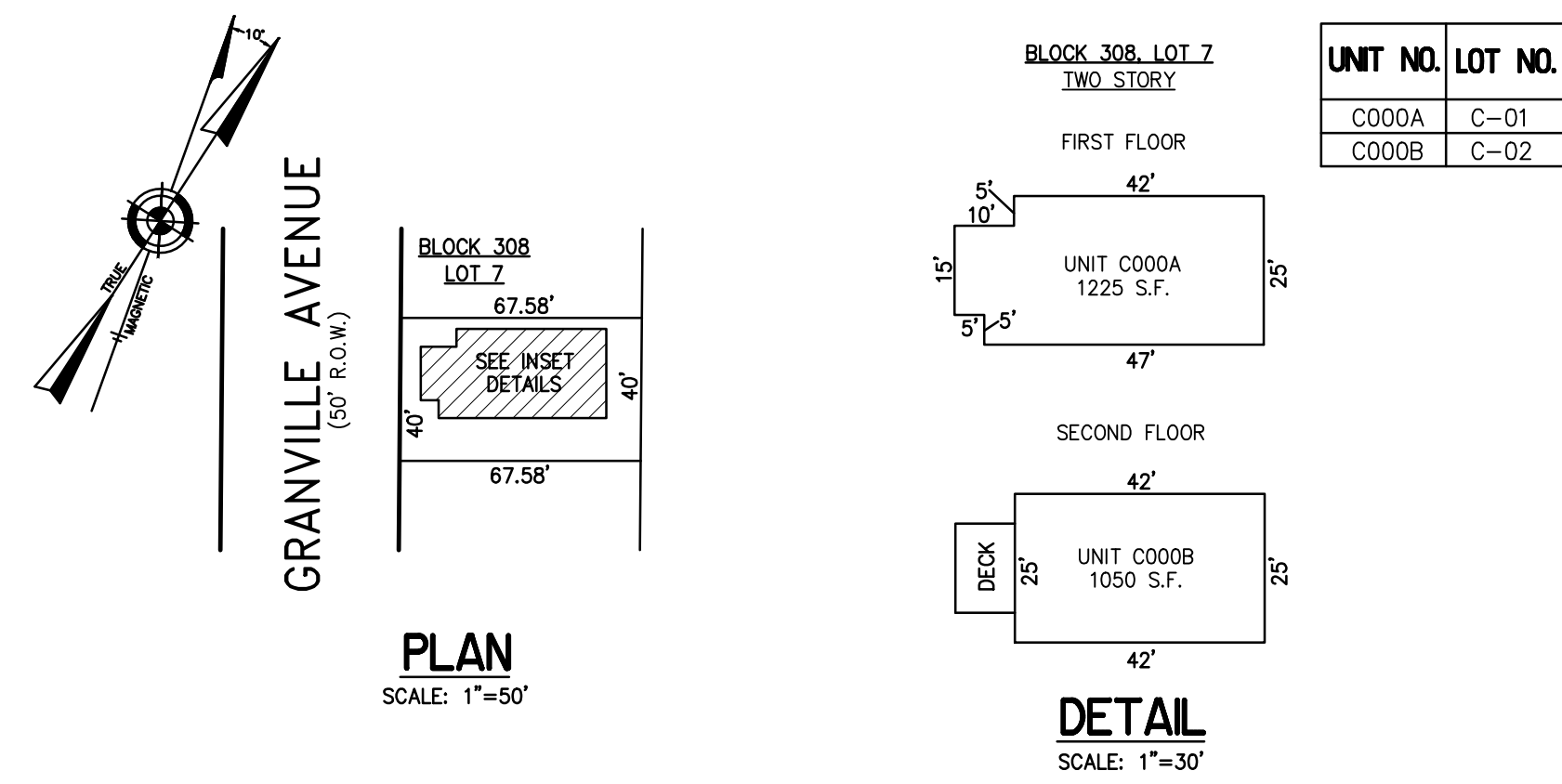
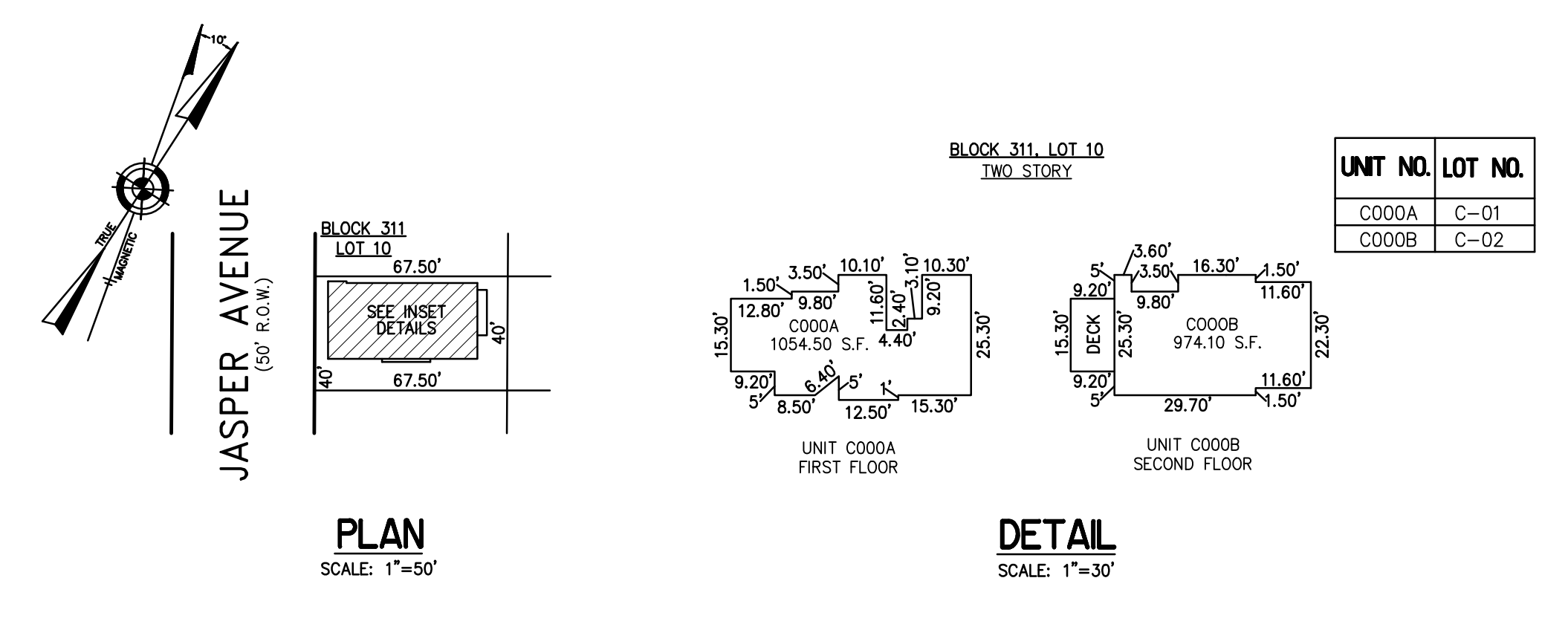


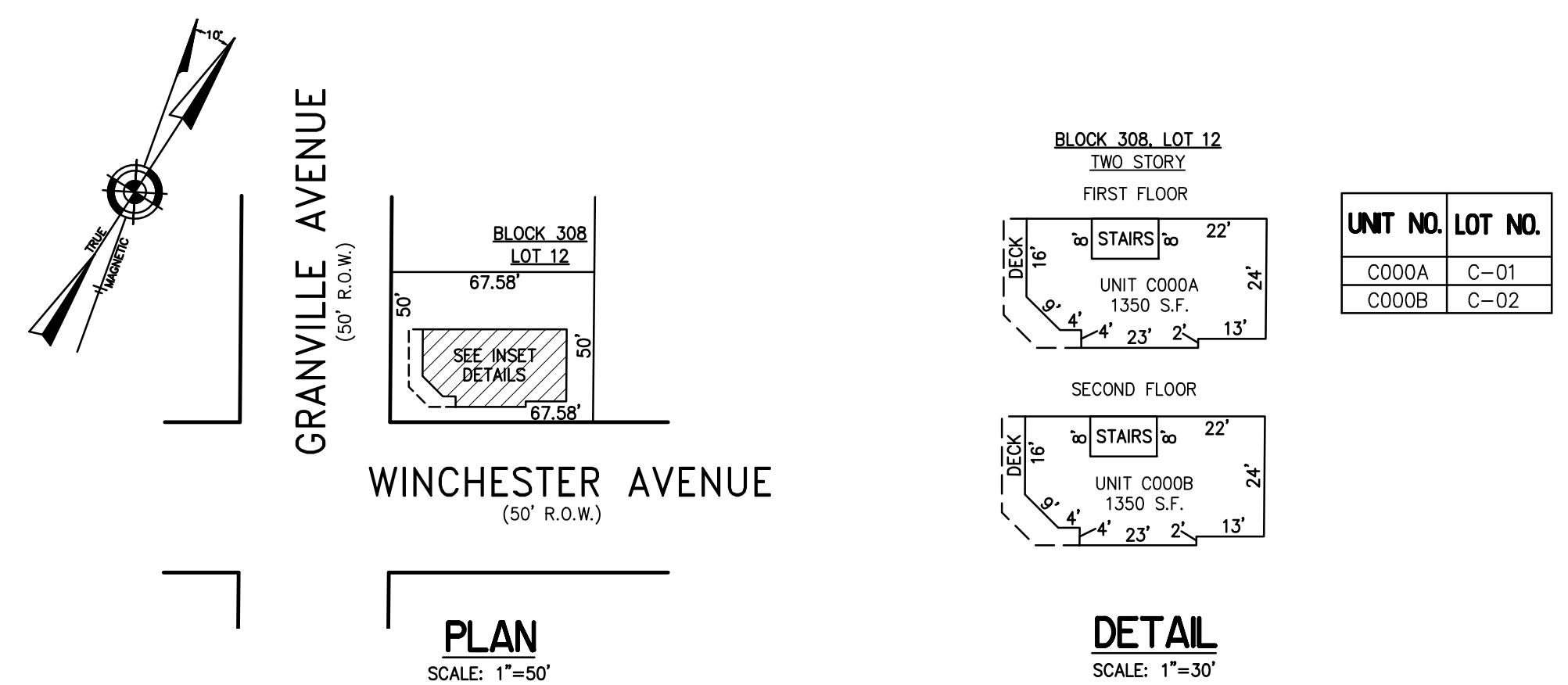
REVISIONS		
4-13-2007	CRAIG F. REMINGTON	23924
8-31-2009	CRAIG F. REMINGTON	23924
1-30-2017	CHARLES E. ADAMSON	42627



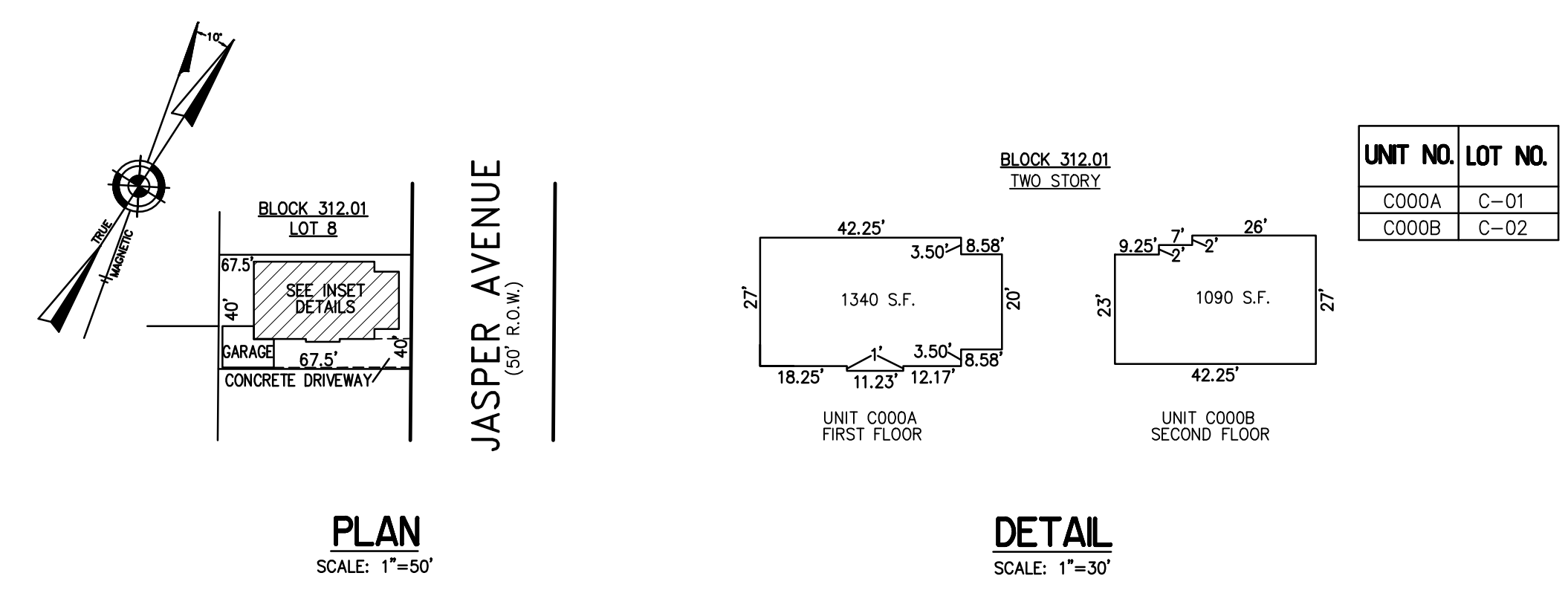
BLOCK 308, LOT 7
111 NORTH GRANVILLE CONDOMINIUM
111 NORTH GRANVILLE AVENUE
INSET "A"



BLOCK 311, LOT 10
105 NORTH JASPER CONDOMINIUM
105 NORTH JASPER AVENUE
INSET "C"




BLOCK 308, LOT 12
8015-17 WINCHESTER AVENUE CONDOMINIUM
8015-17 WINCHESTER AVENUE
INSET "B"



BLOCK 312.01, LOT 8
108 NORTH JASPER CONDOMINIUM
108 NORTH JASPER AVENUE
INSET "D"

CONDOMINIUM DETAILS AND DIMENSIONS
 BLOCK 308, LOT 7
 BLOCK 308, LOT 12
 BLOCK 311, LOT 10
 BLOCK 312.01, LOT 8
 SEE PLATE 7

"THIS TAX MAP PLATE HAS BEEN DIGITALLY DRAWN USING COMPUTER-AIDED DRAFTING/DESIGN (CADD) & COORDINATE GEOMETRY (COGO). IT IS BASED ON THE ORIGINAL DIGITALLY DRAWN TAX MAP PLATE BEARING THE OFFICIAL NEW JERSEY DIVISION TAXATION APPROVAL STAMP WITH APPROVAL DATE 6-3-2005 SERIAL NUMBER 846 AND SIGNATURES OF SIGNERS THOMAS J. REILLY, CHIEF, LOCAL PROPERTY, FIELD ASSISTANCE, SANTO C. DIDONATO, SUPERVISING FIELD REPRESENTATIVE. THE ORIGINAL DIGITALLY DRAWN TAX MAP PLATE WITH THE OFFICIAL APPROVAL STAMP IS ON FILE WITH REMINGTON, VERNICK & WALBERG ENGINEERS."

TAX MAP
CITY OF MARGATE
 ATLANTIC COUNTY NEW JERSEY
 SCALE: 1" = 100' DATE: 11-01-2003
CRAIG F. REMINGTON LAND SURVEYOR LIC. NO. 23924

REMINGTON, VERNICK & WALBERG ENGINEERS
 845 N. MAIN STREET, PLEASANTVILLE, N.J. 08232
 (609) 645-7100, FAX (609) 645-7076
 WEB SITE ADDRESS: WWW.RVW.COM