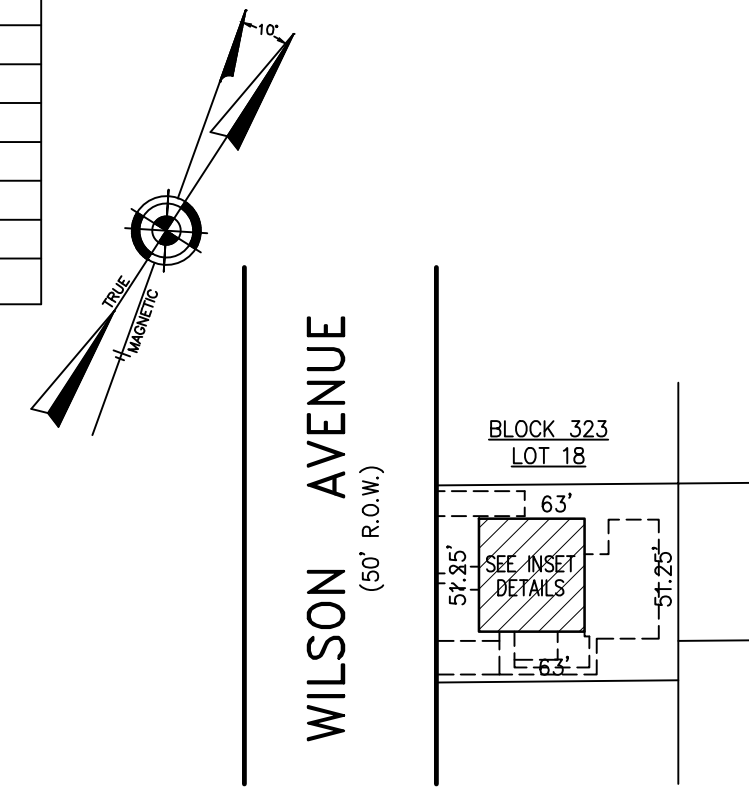
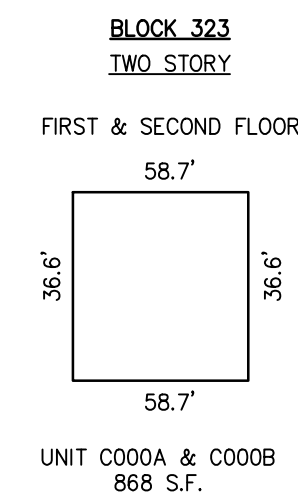


REVISIONS		
4-13-2007	CRAIG F. REMINGTON	23924
3-03-2020	CHARLES E. ADAMSON	42627



PLAN
SCALE: 1"=50'

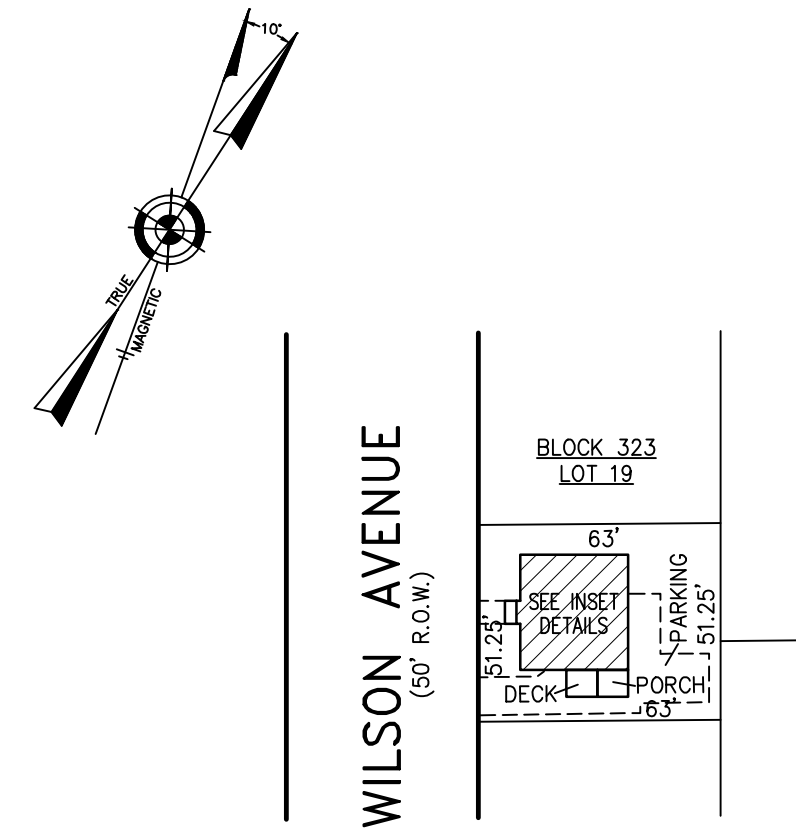


UNIT NO.	LOT NO.
C000A	C-01
C000B	C-02

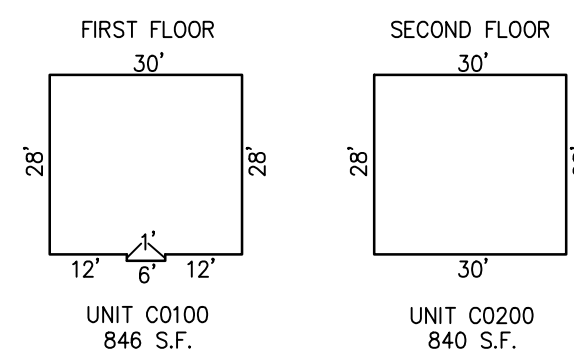
NOTE: DIMENSIONS AND SQUARE FOOTAGE ARE TYPICAL FOR SIMILAR UNITS

DETAIL
SCALE: 1"=30'

BLOCK 323, LOT 18
109 NORTH WILSON AVENUE CONDOMINIUM
109 NORTH WILSON AVENUE



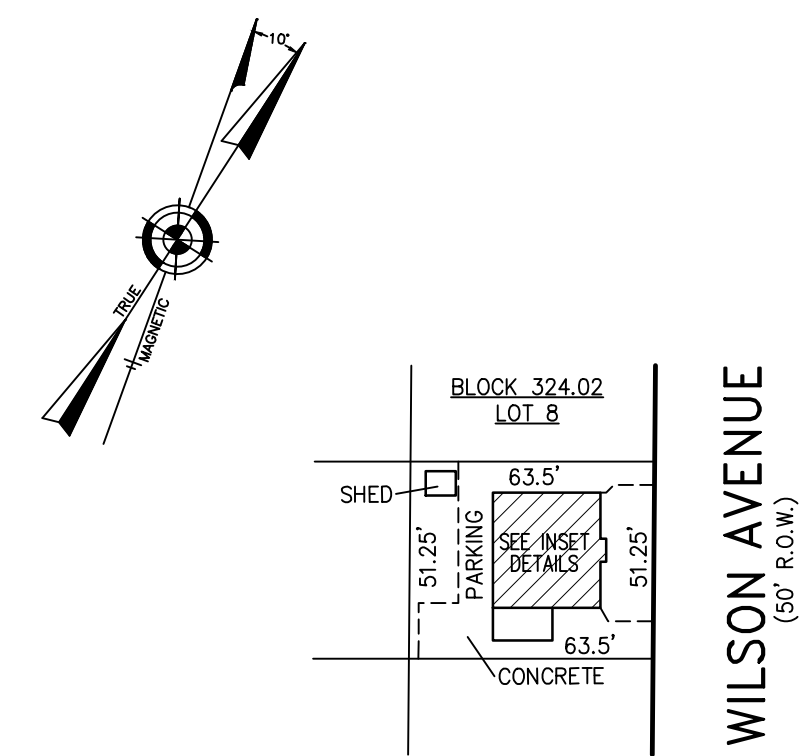
PLAN
SCALE: 1"=50'



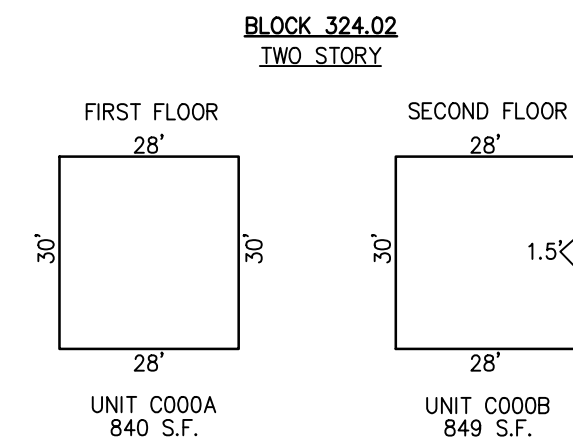
UNIT NO.	LOT NO.
C0100	C-01
C0200	C-02

DETAIL
SCALE: 1"=30'

BLOCK 323, LOT 19
107 NORTH WILSON AVENUE CONDOMINIUM
107 NORTH WILSON AVENUE



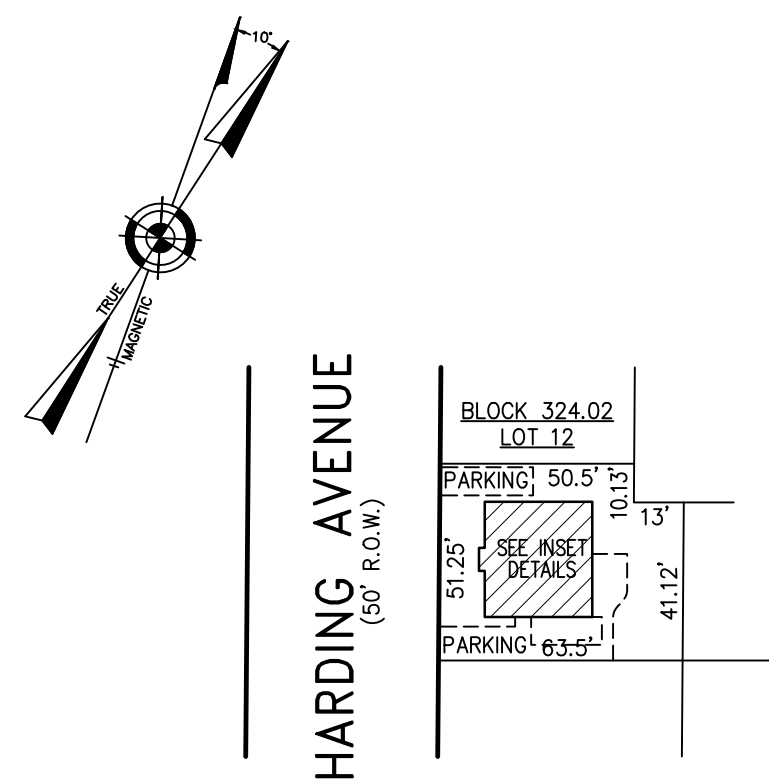
PLAN
SCALE: 1"=50'



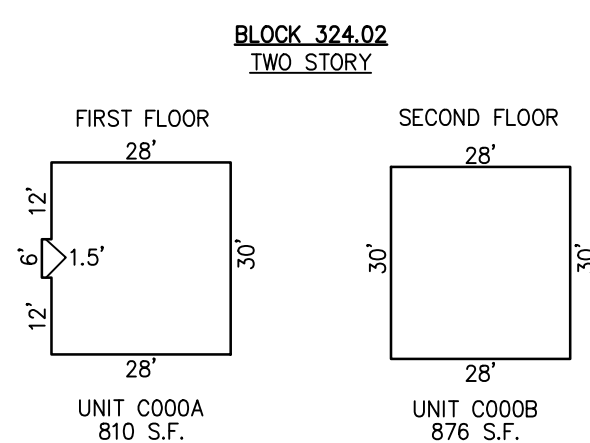
UNIT NO.	LOT NO.
C000A	C-01
C000B	C-02

DETAIL
SCALE: 1"=30'

BLOCK 324.02, LOT 8
JACOB'S WALK CONDOMINIUM
104 NORTH WILSON AVENUE



PLAN
SCALE: 1"=50'



UNIT NO.	LOT NO.
C000A	C-01
C000B	C-02

DETAIL
SCALE: 1"=30'

BLOCK 324.02, LOT 12
117 NORTH HARDING CONDOMINIUM
117 NORTH HARDING AVENUE

CONDOMINIUM DETAILS AND DIMENSIONS
BLOCK 323, LOT 18
BLOCK 323, LOT 19
BLOCK 324.02, LOT 8
BLOCK 324.02, LOT 12
SEE PLATE 6

"THIS TAX MAP PLATE HAS BEEN DIGITALLY DRAWN USING COMPUTER-AIDED DRAFTING/DESIGN (CADD) & COORDINATE GEOMETRY (COGO). IT IS BASED ON THE ORIGINAL DIGITALLY DRAWN TAX MAP PLATE BEARING THE OFFICIAL NEW JERSEY DIVISION TAXATION APPROVAL STAMP WITH APPROVAL DATE 6-3-2005 SERIAL NUMBER 846 AND SIGNATURES OF SIGNERS' THOMAS J. REILLY, CHIEF, LOCAL PROPERTY, FIELD ASSISTANCE, SANTO C. DIDONATO, SUPERVISING FIELD REPRESENTATIVE. THE ORIGINAL DIGITALLY DRAWN TAX MAP PLATE WITH THE OFFICIAL APPROVAL STAMP IS ON FILE WITH REMINGTON, VERNICK & WALBERG ENGINEERS."

TAX MAP
CITY OF MARGATE

ATLANTIC COUNTY NEW JERSEY
SCALE: AS NOTED DATE: 11-01-2003

CRAIG F. REMINGTON LAND SURVEYOR LIC. NO. 23924



REMINGTON, VERNICK & WALBERG ENGINEERS
845 N. MAIN STREET, PLEASANTVILLE, N.J. 08232
(609) 645-7100, FAX (609) 645-7076
WEB SITE ADDRESS: WWW.RVE.COM