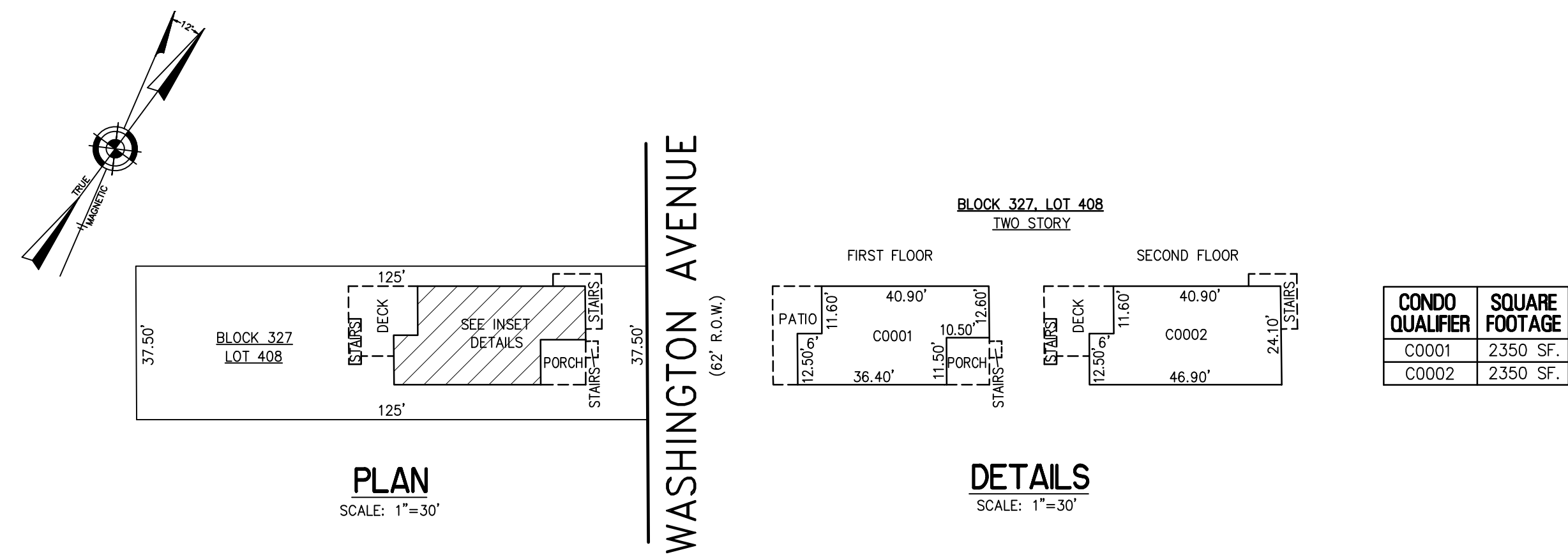


REVISIONS	

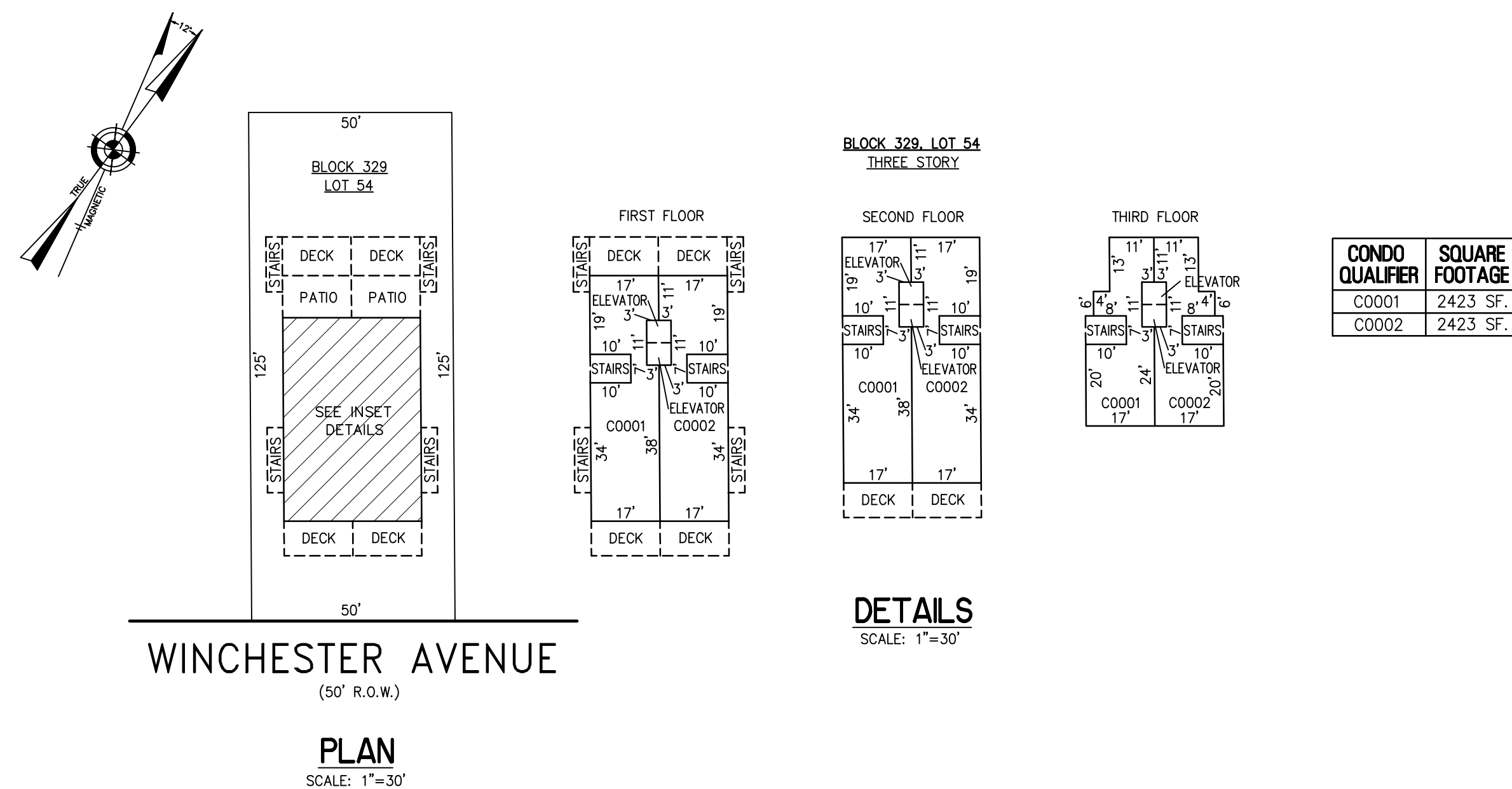


PLAN
SCALE: 1"=30'

DETAILS
SCALE: 1"=30'

CONDO QUALIFIER	SQUARE FOOTAGE
C0001	2350 SF.
C0002	2350 SF.

BLOCK 327 LOT 408
112 NORTH WASHINGTON AVENUE CONDOMINIUMS

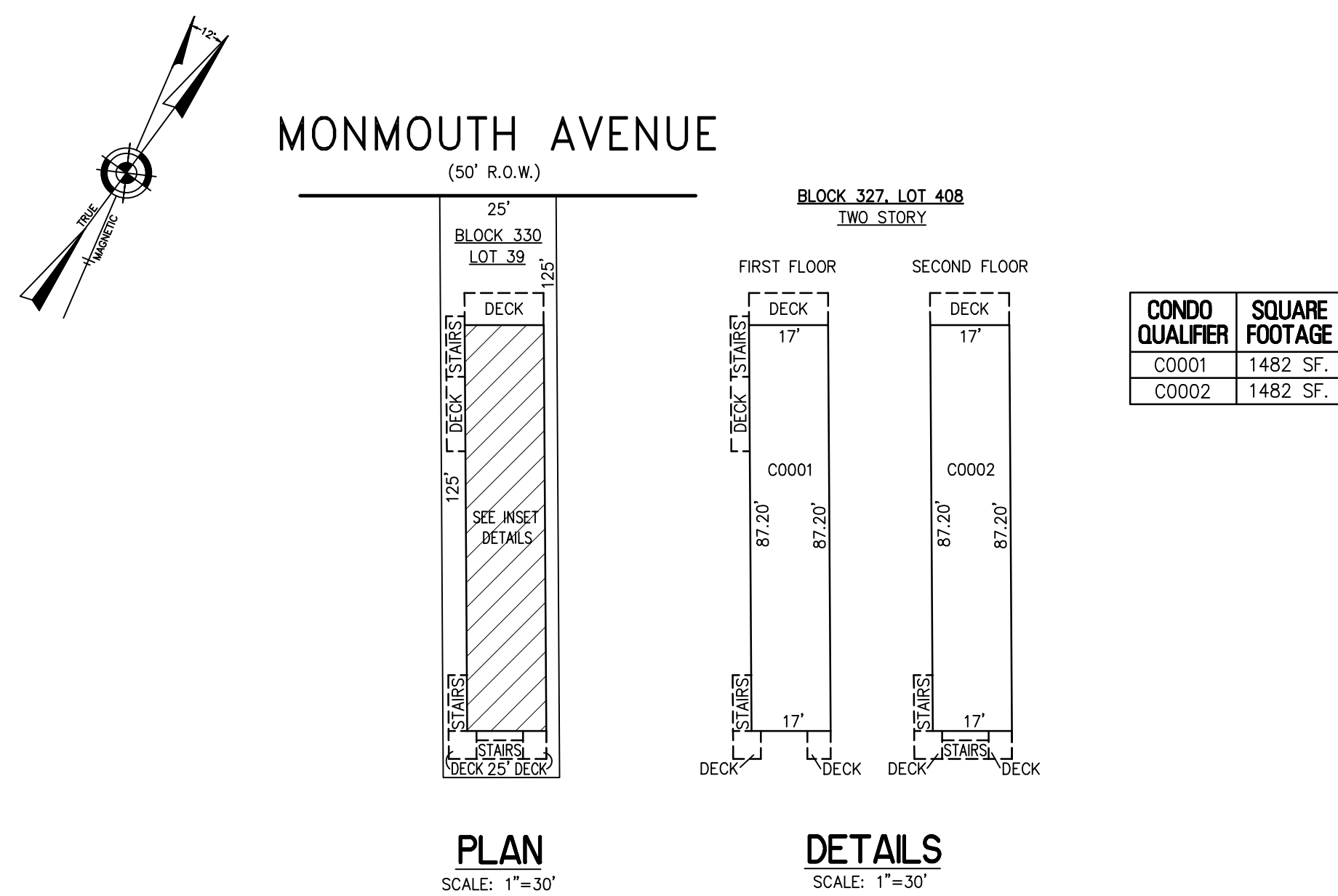


PLAN
SCALE: 1"=30'

DETAILS
SCALE: 1"=30'

CONDO QUALIFIER	SQUARE FOOTAGE
C0001	2423 SF.
C0002	2423 SF.

BLOCK 329 LOT 54
9511 WINCHESTER AVENUE CONDOMINIUMS



PLAN
SCALE: 1"=30'

DETAILS
SCALE: 1"=30'

CONDO QUALIFIER	SQUARE FOOTAGE
C0001	1482 SF.
C0002	1482 SF.

BLOCK 330 LOT 39
9606 MONMOUTH AVENUE CONDOMINIUMS

CONDOMINIUM DETAILS AND DIMENSIONS
BLOCK 327 LOT 408
BLOCK 329 LOT 54
BLOCK 330 LOT 39
SEE PLATE 5

TAX MAP
CITY OF MARGATE

ATLANTIC COUNTY NEW JERSEY
SCALE: AS NOTED DATE: 3-10-2020

CRAIG F. REMINGTON LAND SURVEYOR LIC. NO. 23924



REMINGTON, VERNICK & WALBERG ENGINEERS
845 N. MAIN STREET, PLEASANTVILLE, N.J. 08232
(609) 645-7100, FAX (609) 645-7076
WEB SITE ADDRESS: WWW.RVW.COM

"THIS TAX MAP PLATE HAS BEEN DIGITALLY DRAWN USING COMPUTER-AIDED DRAFTING/DESIGN (CADD) & COORDINATE GEOMETRY (COGO). IT IS BASED ON THE ORIGINAL DIGITALLY DRAWN TAX MAP PLATE BEARING THE OFFICIAL NEW JERSEY DIVISION TAXATION APPROVAL STAMP WITH APPROVAL DATE 6-3-2005 SERIAL NUMBER 846 AND SIGNATURES OF SIGNERS THOMAS J. REILLY, CHIEF, LOCAL PROPERTY, FIELD ASSISTANCE. SANTO C. DIDONATO, SUPERVISING FIELD REPRESENTATIVE. THE ORIGINAL DIGITALLY DRAWN TAX MAP PLATE WITH THE OFFICIAL APPROVAL STAMP IS ON FILE WITH REMINGTON, VERNICK & WALBERG ENGINEERS."